

# Extra Equipment

Customize your Disc-Roller Contour to suit your needs

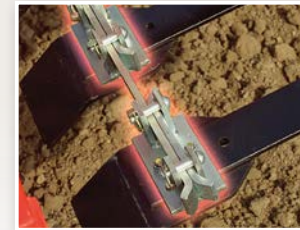
## Spring-Board

Disc-Roller Contour is an excellent primary cultivator for stubble work and incorporating crop residues. Add a Spring-Board and you'll have an unmatched machine for secondary cultivation as well – a true multi-purpose cultivator that can be used on both ploughed and non-ploughed land to ensure a level and firm seedbed.\*



\* Spring-Board available for trailed models only.

## Transv. Lock. System



The optional transverse locking system transforms the individual springs into one unified leveling “blade” for enhanced levelling performance.

## Edge Equipment



Optional side plates can be mounted to help prevent certain soil types from forming ridges along the edges of the worked area.

## Slicing Plates



In heavier soils, slicing plates can be mounted in place of standard flat plates to better break up clods.

## Longfinger Tines



For cultivation aimed at creating a stale seedbed, a pre-mounted tine harrow with 16 mm tines can be used to ensure surface soil movement.

## Top-Cutter

Mounting a Top-Cutter in front of the discs on your Disc-Roller Contour allows for effective shredding and incorporation of crop residues. The six double-sided Hardox steel knives provide maximum performance and ensure a consistent and stable soil flow.

The unique closed tube construction prevents soil and residue from collecting and sticking to the Top-Cutter, maintaining consistently high efficiency without unnecessary downtime in the field.



# Extra Equipment

## Rub.-Damp. Ball Bearings

Ensure the roller can move freely over the ground without damaging the bearings.



## In-line-system

When using a towing eye, the in-line system allows adjustment of the harrow's parallelism with the soil surface – directly from the tractor cab.



## Front Support Wheels

A set of pre-mounted, adjustable and swiveling support wheels (2 x 300/55x12 – 8 PLY) for trailed models from 2.50 to 6.50 m and 8.00 m.



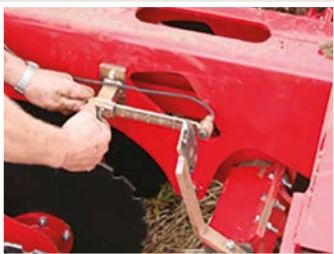
## Long-finger After-harrow

Adjustable longfinger afterharrow with 12 mm tines can be mounted behind the roller. Often useful for seeding applications.



## Electric Depth Stop

Allows selection of a pre-set working depth. Standard on larger machines and available on 2.5 to 6.5 m models.



## Material Damper Guard

Ensures that soil falls in front of the roller so that a level surface is consolidated. Recommended when seeders are mounted on the machine.



## HPV Controller

An HPV controller reduces the number of tractor spool valves needed by controlling up to four double-acting hydraulic functions.



## Multi-Seeder

All Disc-Rollers can be fitted with a mounting kit compatible with a Multi-Seeder, enabling the sowing of oilseed rape and cover crops.



Additional Optional Equipment: Hydraulic brakes, air brakes, LED light kits, drawbar extension, and much more.

# Technical Specifications



2,25 - 7,75 m



2,32 - 4,00 m



80 - 240 hp



18 - 64 pcs

Model	Working Width, m	Type	Number of Sections	Transport Width, m	Number of Discs	Power Req., hp
2.50	2.25	Mounted / Trailed - Rigid	1	2.50	18	80+
3.00	2.75	Mounted / Trailed - Rigid	1	3.00	22	90+
3.50	3.25	Mounted / Trailed - Rigid	1	3.50	26	100+
4.00	3.75	Mounted / Trailed - Rigid	1	4.00	30	110+
4.50	4.25	Mounted / Trailed - Foldable	2	2.32 / 2.42	34	130+
5.50	5.25	Mounted / Trailed - Foldable	2	2.32 / 2.42	42	160+
6.50	6.25	Mounted / Trailed - Foldable	2	2.32 / 2.62	50	190+
8.00	7.75	Trailed - Foldable	3	2.45	64	220+



Tel.: +45 97 72 42 88  
E-mail: [info@he-va.com](mailto:info@he-va.com)

Web: [www.he-va.com](http://www.he-va.com)

N.A. Christensensvej 34  
DK-7900 Nykøbing Mors

Your HE-VA dealer

HE-VA reserves the right to make design and construction changes without notice



# Disc-Roller Contour

## Precise Primary and Secondary Cultivation



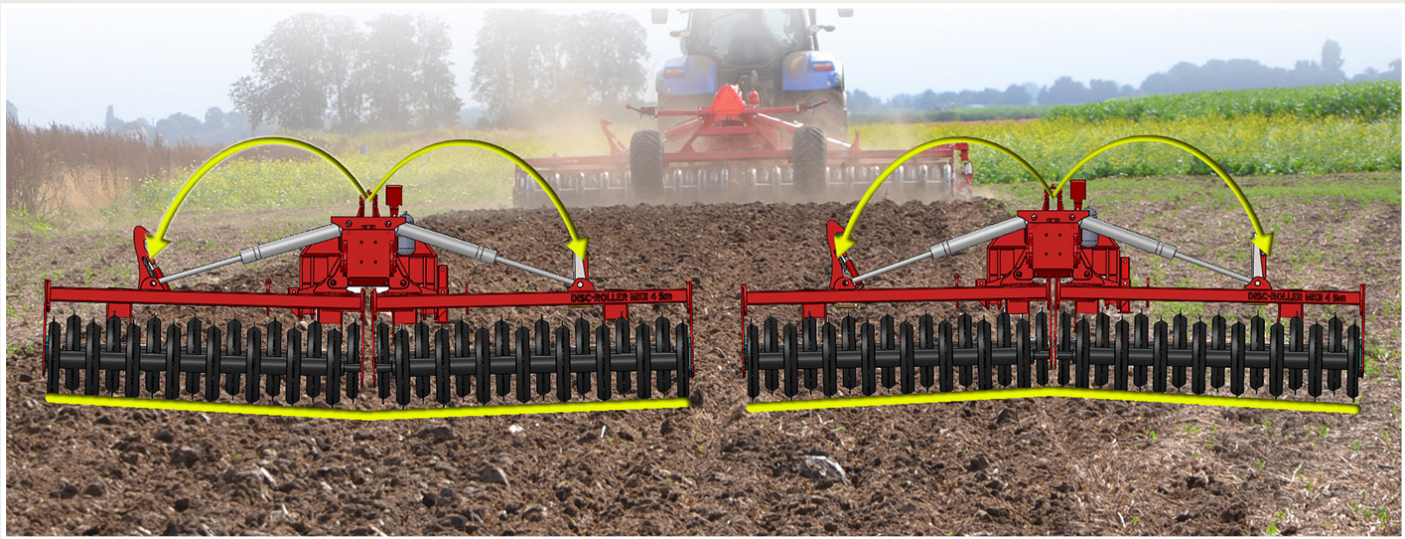


# Disc-Roller Contour – the Ideal Multi-Purpose Disc Cultivator

- Precise depth control for creating stale seedbeds
- Aggressive cultivation with minimal soil disturbance
- Levelling and consolidation for seedbed preparation

## Consistent Performance on Uneven Terrain

To create a stale seedbed or prepare a seedbed for seeding, the machine must follow the field’s contours. Otherwise, areas may be under-cultivated or over-cultivated, affecting crop growth and yield. The Disc-Roller Contour tackles this with its unique contour-following system.



Its hydraulic folding mechanism is linked to two accumulators and a hydraulic pressure gauge. The operator can distribute pressure evenly across the working width for consistent cultivation on uneven ground. The accumulators act as an oil buffer, while hydraulic cylinders extend or retract to allow the disc cultivator to follow surface contours.

## A Versatile Implement

Incorporate stubble and crop residues to depths up to 125 mm (5 in) with reduced tillage.



Or prepare ploughed soil before seeding. With approximately 1 ton of soil per meter, it achieves effective consolidation for secondary cultivation.



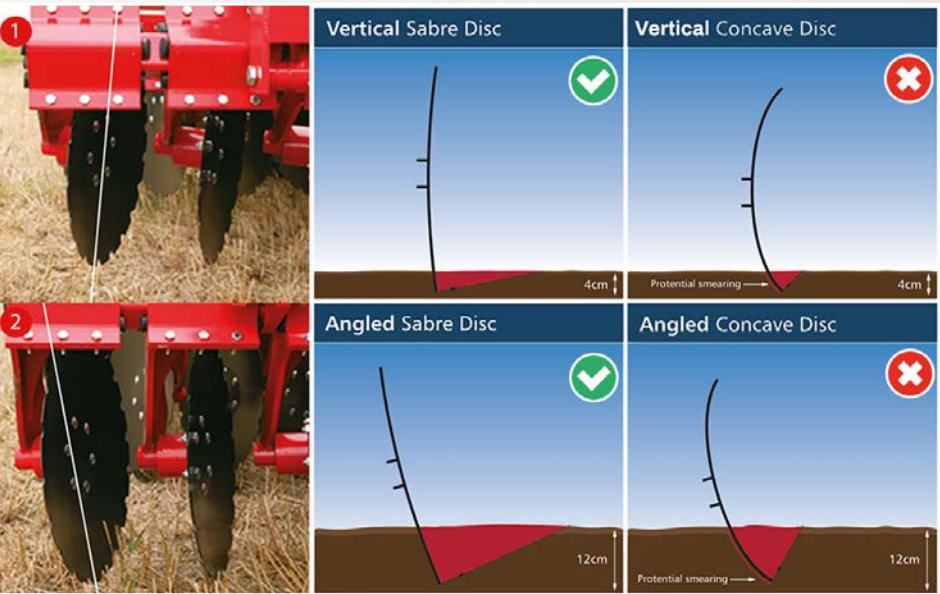
## Unique Disc Technology

DSD System - Depth Synchronized Disc  
This exclusive system allows a range of tasks—from forming 2–5 cm stale seedbeds to cutting and incorporating residues in heavy soils

The DSD system is designed for aggressive depth control, where the discs automatically adopt a more aggressive angle the deeper they penetrate the soil.



- 1 When working close to the surface, the DSD system ensures that the disc remains perpendicular (vertical) to the soil, which means the discs move the soil laterally rather than lifting it. This results in full-surface soil engagement. The vertical disc angle loosens the soil instead of scooping it, reducing the risk of smearing.
- 2 When used as a deep disc cultivator, or for mixing and incorporation of crop residues, a more aggressive disc angle is required. The DSD system automatically increases aggressiveness by adjusting the disc angle relative to the soil surface.



## HE-VA 510 mm Sabre Disc

Conventional concave discs typically operate at a steep angle and do not overlap sufficiently to cultivate the entire surface layer. The Sabre discs, with their shallow working angle and the staggered configuration of the two disc rows, deliver superior cutting performance and maximize soil movement and mixing—even when working only the top layer.

Another key advantage of the relatively shallow disc angle is that it prevents smearing in wet conditions and does not create a plough pan, unlike more traditional, deeply concave discs.



## Effective Levelling and Packing

### ROLLER TYPES

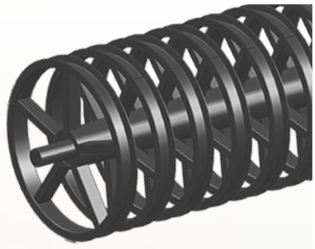
Available in six roller types, Disc-Roller Contour offers flexibility for various soils and tasks:

#### V-Profile Roller



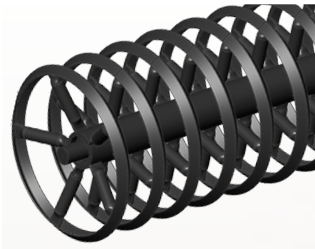
The V-profile roller effectively crushes clods and leaves a smooth soil surface. Plants, straw, and stubble are pressed into the topsoil, accelerating the decomposition process.

#### U-Profile Roller



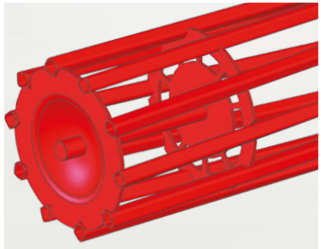
The U-profile roller is designed to fill with soil during operation, ensuring effective soil-to-soil recompaction and leaving the surface with a natural structure free from smearing.

#### Wave Roller



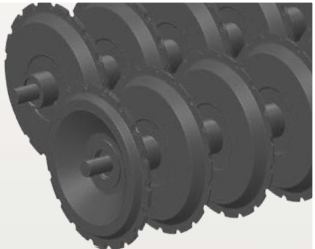
This roller provides optimal recompaction on light to medium soils. It leaves a fine soil surface with minimal risk of soil displacement.

#### Square Tube Roller



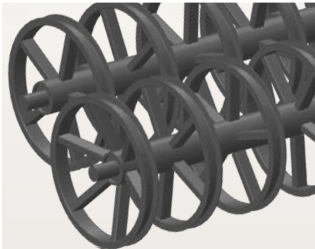
The square tube roller provides effective depth control and efficiently crushes clods, especially in light or loose soils.

#### Twin V-Profile Roller



The Twin roller is a reliable, maintenance-free solution, as the rollers clean each other while operating. The Twin roller with a V-profile leaves the soil slightly ridged, providing a drainage effect that promotes faster warming and drying.

#### Twin U-Profile Roller



The Twin roller is a reliable, maintenance-free solution, as the rollers clean each other during operation. The Twin roller with a U-profile ensures effective soil-to-soil consolidation without smearing.

## V-Profile Roller

Each ring section is equipped with notches to ensure the roller’s rotational ability in light soil types. The aggressive rib and shoulder profile, combined with a ring spacing of 150 mm, provides the soil with excellent compaction and weather-resistant finish.

Towed Disc-Roller Contours are available with a V-profile ring packer of 600 mm or the larger 700 mm model.

