

Extra Equipment

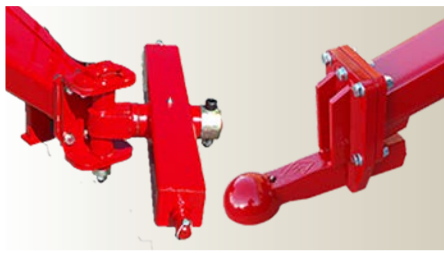
Multi-Seeder

A mounting set is available for HEVA Multi-Seeder, the pneumatic fine seeder for rape, grass and other fine seeds.



Drawbars

Triple-Tiller can be mounted with a two-point pivoting crossbar or Ø80 mm ball hitch.



LED Lights

All machines can be equipped with LED lights.



Quick-Change kit

With a Quick-Change kit, the wear parts can quickly and simply be exchanged with just a hammer. The kit also enables the mounting of 260 mm wing share for complete cutting. It also consist of 75 mm wide chisel point.



Support / depth wheel

For a more precise depth control, e.g. when cultivating in shallow depths, the trailed models can be equipped with 2 spindle adjustable support / depth wheels 10.0/80x12, mounted on the front of the harrow frame.




Edge equipment

For an even soil surface between each pass in the field, an edge equipment with infinitely variable adjustment is available for the Triple-Tiller.




Technical Specifications




3.00 - 6.00 m




2.48 - 4.00 m



100 - 280 HP



1,850 - 5,540 kg



12 - 24 pcs

Work Width, m	Type	Transport Width, m	No. of Tines	Power Req., HP	Lifting Req., kg	Weight, kg
3.00	Rigid - Three Point Mounted	3.00	12	100 - 200	4,070 - 5,430	1,850 - 2,470
3.50	Rigid - Three Point Mounted	3.50	14	120 - 240	4,690 - 6,290	2,135 - 2,860
4.00	Rigid - Three Point Mounted	4.00	16	180 - 300	5,290 - 7,185	2,420 - 3,300
4.00	Foldable - Three Point Mounted	2.48	16	180 - 300	6,470 - 8,290	2,570 - 3,400
5.00	Foldable - Three Point Mounted	2.48	20	200 - 300	6,470 - 8,290	3,880 - 4,870
3.00	Rigid - Trailed	3.00	12	100 - 200	-	2,430 - 3,050
3.50	Rigid - Trailed	3.50	14	120 - 240	-	2,715 - 3,440
4.00	Rigid - Trailed	4.00	16	180 - 300	-	3,090 - 3,900
4.00	Foldable- Trailed	2.48	16	180 - 300	-	3,240 - 4,070
5.00	Foldable- Trailed	2.48	20	200 - 300	-	4,550 - 5,540
6.00	Foldable - Trailed	2.48	24	250 - 400	-	-



Triple-Tiller

Effective stubble cultivation



Stubble cultivation with multiple options

Triple-Tiller is a comprehensive tool for both stubble cultivation as well as deeper cultivation (0-30 cm) e.g. in a non-ploughed system.



Tine types

Spring tine double twisted:
35 x 35 mm (3.00 - 3.50 m)
Working depth: 0 - 20 cm.
40 x 40 mm (4.00 - 5.00 m)
Working depth: 0 - 30 cm.



Shear bolt, preloaded for 2,550 kg.

Working depth: 0 - 30 cm



Automatic tine with single spring/auto reset, preloaded for 560 kg, ensures an effective 0 - 30 cm cultivation of even the heaviest soil types.



25 cm row spacing

All Triple-Tiller models have 3 rows of tines and a solid frame of 100x100x8mm sectional tubes with a frame height of 85 cm.

A unique quality of the Triple-Tiller is the 25 cm row spacing, ensuring perfect cultivation and soil loosening in all conditions.

Available as trailed and three-point mounted with working widths from 3.00 to 6.00 m, the Triple-Tiller is suitable for tractors from 100 HP.

Depth control



On all models the working depth is adjusted hydraulically from the cabin with the possibility of fixed stop via the distance clips.

Different sizes of clips are included, allowing the user to reach just the right depth.

Hydraulic folding

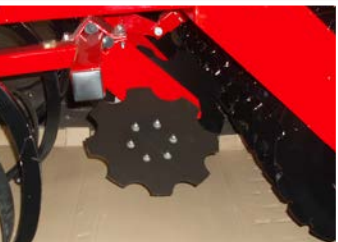
The 4.00, 5.00 and 6.00 m foldable models have a transport width of 2.48 m.

The automatic locking of the side sections ensures safety both when transporting and servicing the harrow.



Levelling equipment

The bracket for the levelling equipment is mounted on the roller, making the levelling tool independent of the harrow depth. As standard the Triple-Tiller is equipped with Ø410 mm serrated eradicator discs with automatic release system. These eradicator discs are easily adjusted by means of central spindles, ensuring their precision.

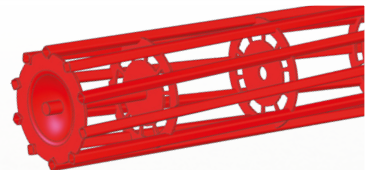


Wear points

Concave Point 75x12 mm	Concave Point 75x19 mm	Narrow Wear Point 50x25 mm	Tip with Tungsten 80 mm	Goose Foot Tip 305x8,3 mm	Goose Foot Tip Hardmetal 305x8,3 mm
STANDARD	EXTRA EQUIPMENT	EXTRA EQUIPMENT	EXTRA EQUIPMENT	EXTRA EQUIPMENT	EXTRA EQUIPMENT

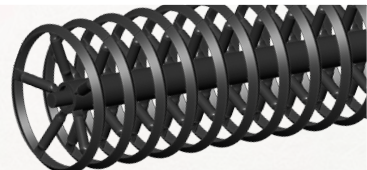
Valsetyper

Square Tube Roller



Ø550 mm square tube roller is made of strong sectional tubes, making the roller very resistant to stones and rocks. The square tube roller consolidates the soil well and leaves the soil surface loose.

Wave Roller



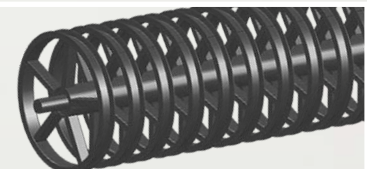
The wave roller ensures a good soil-to-soil consolidation, which contributes to the optimal work of the agricultural machine - even with very moist and loose soil types.

V-Profile Roller



Ø600 mm roller with an optimal cutting action that leaves an ideal consolidation and - more importantly - a weatherproof surface. The V-profile is a pressed steel, castellated ring with shoulder profile giving aggressive clod crushing in heavy soils and even consolidation in lighter soils. The adjustable scrapers between each ring ensure an effective consolidation of the soil in all conditions.

U-Profile Roller



U-Profile roller rings are filled with soil when working in the field and thereby provides an excellent soil-to-soil consolidation. The soil is left with a natural and level surface.