

Extra Equipment

Spring-Board

Spring-Board can be mounted on all trailed models. This way an effective levelling effect is achieved.



Hydraulic Brakes

Hydraulic braking systems are available for all trailed models.



Air Brakes

Air braking systems are available for all trailed models.



LED Lights

All models can be fitted with LED light sets - rear, stop and turn signals.



Electric Depth Stop

Available as extra equipment. This makes it possible to control the depth so that it is always the same. The function has a manual switch.



Material Damper Guard

A material damper guard can be mounted, ensuring that the soil falls in front of the packer. This results in a uniform surface to be consolidated. The damper guard can be adjusted in height for maximised effect.



Support / Depth Wheel

Height adjustable support/depth wheels are available, mounted in front, on trailed models, for more stability. Mainly for loose soil types and/or shallow soil.



Multi-Seeder

Mounting set allows HE-VA Multi-Seeder to be fitted for seeding oil seed rape, stubble turnips, grass seeds and other small seeds or slug pellets.



Technical Specifications



2.25 - 4.75 m



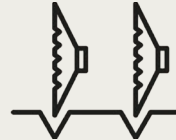
2.45 - 4.00 m



1,260 - 4,300 kg



90 - 150 hp



18 - 38 pcs

Model	Working Width, m	Type	Number of Sections	Transport Width, m	Number of discs	Power Req., hp	Weight, kg		
							Square Tube Roller	Wave Roller	V-Profile Roller
2.50	2.25	Three-Point Mounted, rigid	1	2.50	18	90+	1,260	1,560	1,780
3.00	2.75	Three-Point Mounted, rigid	1	3.00	22	100+	1,460	1,810	2,080
3.50	3.25	Three-Point Mounted, rigid	1	3.50	26	110+	1,670	2,125	2,395
4.00	3.75	Three-Point Mounted, rigid	1	4.00	30	120+	1,880	2,440	2,710
4.00	3.75	Three-Point Mounted, foldable	2	2.45	30	120+	-	2,760	3,120
5.00	4.75	Three-Point Mounted, foldable	2	2.45	38	150+	-	3,290	3,750
3.00	2.75	Trailed, rigid	1	3.00	22	100+	-	2,360	2,630
3.50	3.25	Trailed, rigid	1	3.50	26	110+	-	2,670	2,945
4.00	3.75	Trailed, rigid	1	4.00	30	120+	-	2,990	3,260
4,00	3,75	Trailed, foldable	2	2,45	30	120+	-	3.320	3.680
5,00	4,75	Trailed, foldable	2	2,45	38	150+	-	3.850	4.300

Disc-Roller Classic

Profitable soil treatment



Tel.: +45 97 72 42 88
E-mail: info@he-va.com

Web: www.he-va.com

N.A. Christensensvej 34
DK-7900 Nykøbing Mors

Your HE-VA dealer



HE-VA reserves the right to make design and construction changes without notice



The Disc-Roller Classic has what it takes - efficiency and simplicity!

The HE-VA Disc-Roller Classic has been developed and tested in close cooperation with end users. Thus, the ideal combination of disc angle and packer ring is a reality, whereby you achieve perfect incorporation, mixing and consolidation in the same workflow.



Efficient Soil Cultivation

The Disc-Roller Classic is compact and extremely easy to operate. It is a versatile machine that can be used to mix stubble and other crop residues with a working depth of up to 125 mm in soil without ploughing.

It is also a unique tool for working plowed soil before

sowing. With the high weight of approx. 1 ton per m., a very efficient cutting is achieved at the same time as a very effective packing of the cultivated soil.

HE-VA's Disc-Roller Classic is an efficient tool for large farms with many hectares, where the work must be carried out in a short time.

Unique DSD-Technology

The work is done by 2 rows of staggered serrated discs, which are mounted on a hub with double angular contact ball bearings. These discs are mounted in the position +180/-180 in relation to the direction of travel. This setup aggressively cuts the entire surface in one motion, shredding the crop residue and mixing it with the soil.

Depth Regulation

When the headland is turned, the discs are lifted up, after which they are lowered again using the hydraulics. The simple depth indicator on the 2.50-5.00 m machines (left) can be clearly seen from the driver's seat, allowing the tractor driver to set the machine's working depth hydraulically from the cab.



HE-VA Sabre Disc

A large part of the development work on the Disc-Roller Classic has been concentrated on optimizing the disc construction. This has resulted in the HE-VA Sabre Disc.

The new and not so arched disc provides a unique cut, which, together with the staggered mounting of the two disc rows, provides maximum movement and mixing of soil and straw material - even at shallower depths. The Sabre disc allows you to achieve very efficient tillage at speeds of up to 16 km/h.

Traditional, highly domed discs have a large angle and thus plow up the soil and leave large clods on the soil surface. This results in significantly less mixing of soil and a rough ride with the machine.



Traditional disc

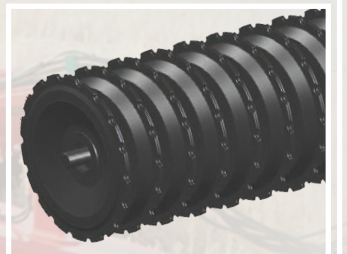


510 mm
HE-VA Sabre Disc

Roller Types

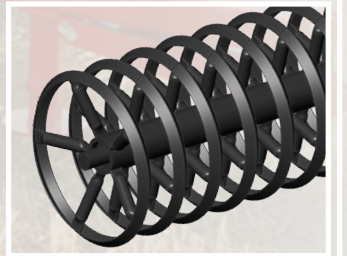
V-Profile

The V-profile roller is a serrated ring of pressed steel with a shoulder profile, which ensures aggressive crushing of soil clods on heavy soils and at the same time ideal packing on lighter soils.



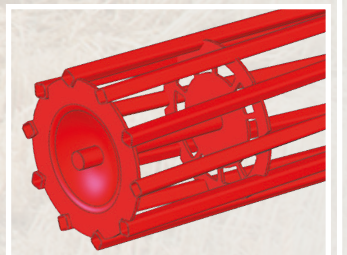
Wave Roller

This roller has an optimal packing effect on light and medium soil types. It leaves a finely divided soil surface with minimal risk of soil compaction.



Square Tube Roller

The 550 mm Square Tube Roller - made from strong profile pipes - is only recommended for loose soil types. This roller provides good depth control.



Simple and Quick Conversion



Top-Cutter



EXTRA EQUIPMENT

Mounting a Top-Cutter in front of the discs on your Disc-Roller Classic enables you to finely chop and incorporate crop residues.

The Top-Cutter's six double-sided knives, made from Hardox steel, deliver maximum efficiency and ensure an even and stable soil flow.

Its unique design, featuring a sealed tubular construction, prevents soil and residues from accumulating and sticking to the Top-Cutter, maintaining consistently high efficiency without unnecessary stoppages in the field.