

Extra Equipment

Spring-Board

Spring-Board can be mounted on all trailed models. This way an effective levelling effect is achieved.



In-line System

When a draw eye is used, the In-line system makes it possible to adjust the parallelism of the harrow in relation to the ground surface - directly from the cab.



Support Wheel

A set of pre-assembled, adjustable and swiveling support wheels 2 x 300/55x12 - 8 PLY for trailed models of 2.50-7.50 m.



Long-finger After-harrow

A long-finger after-harrow placed behind the roller leaves a nice and evenly leveled surface.



Electric Depth Stop

Available as extra equipment. This makes it possible to control the depth so that it is always the same. The function has a manual switch.



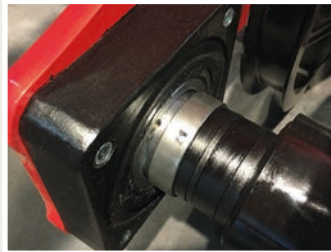
Material Damper Guard

A material damper guard can be mounted, ensuring that the soil falls in front of the packer. This results in a uniform surface to be consolidated. The damper guard can be adjusted in height for maximised effect.



Rub.-Damp. Ball Bearings

Ensures that the roller can move freely on the ground without damaging the ball bearings.

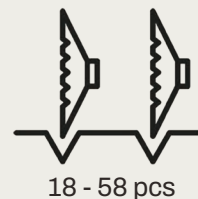
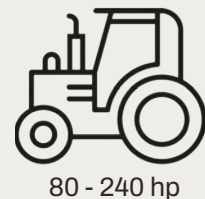


Multi-Seeder

Mounting set allows HE-VA Multi-Seeder to be fitted for seeding oil seed rape, stubble turnips, grass seeds and other small seeds or slug pellets.



Technical Specifications



Model	Working Width, m	Type	Number of Sections	Transport Width, m	Number of discs	Power Req., hp
2.50	2.25	Three-Point Mounted / Trailed - Rigid	1	2.50	18	80+
3.00	2.75	Three-Point Mounted / Trailed - Rigid	1	3.00	22	90+
3.50	3.25	Three-Point Mounted / Trailed - Rigid	1	3.50	26	100+
4.00	3.75	Three-Point Mounted / Trailed - Rigid	1	4.00	30	110+
4.50	4.25	Trailed - Foldable	2	2.52	34	130+
5.50	5.25	Trailed - Foldable	2	2.52	42	160+
6.50	6.25	Trailed - Foldable	2 / 3 *	2.84	50	190+
7.50	7.25	Trailed - Foldable	2 / 3 *	2.84	58	190+

* 2-section disc section + 3-section roller section

Disc-Roller XL Contour

For maximum processing of the soil



Tel.: +45 97 72 42 88
E-mail: info@he-va.com

Web: www.he-va.com

N.A. Christensensvej 34
DK-7900 Nykøbing Mors

Your HE-VA dealer



HE-VA reserves the right to make design and construction changes without notice



Effektiv bearbejdning af selv de vanskeligste jordtyper

Disc-Roller XL Contour is a versatile cultivator. It can be used to mix stubble and other crop residues with a working depth down to 175 mm in reduced soil working. It is also a great tool for working ploughed soil prior to sowing.

The high net weight and large discs give highly efficient cutting as well as good compacting of the processed soil. Despite the spacious design, it is compact and therefore easy to manoeuvre both in the field and on the road.



Disc-Roller XL Contour with 2-section disc section and 3-section roller section in transport position (6.50 + 7.50 m)

Models

Disc-Roller XL Contour is available in working widths from 2.50 to 7.50 m and as 1-section, 2-section and 3-section machines.



1-section



2-section



3-section

Large Discs for Optimal Mixing in Depth



610x6 mm fine profile



610x6 mm rough profile



570x6 mm

The Disc-Roller XL Contour can be equipped with either 610 mm or 570 mm discs and is designed with a greater depth in the frame structure than smaller disc harrows to provide room for the large discs and ensure good soil flow.

The larger discs are also available in two versions, one with a finer and one with a more rough profile.

What both have in common is that they penetrate deeper into the ground, where they effectively

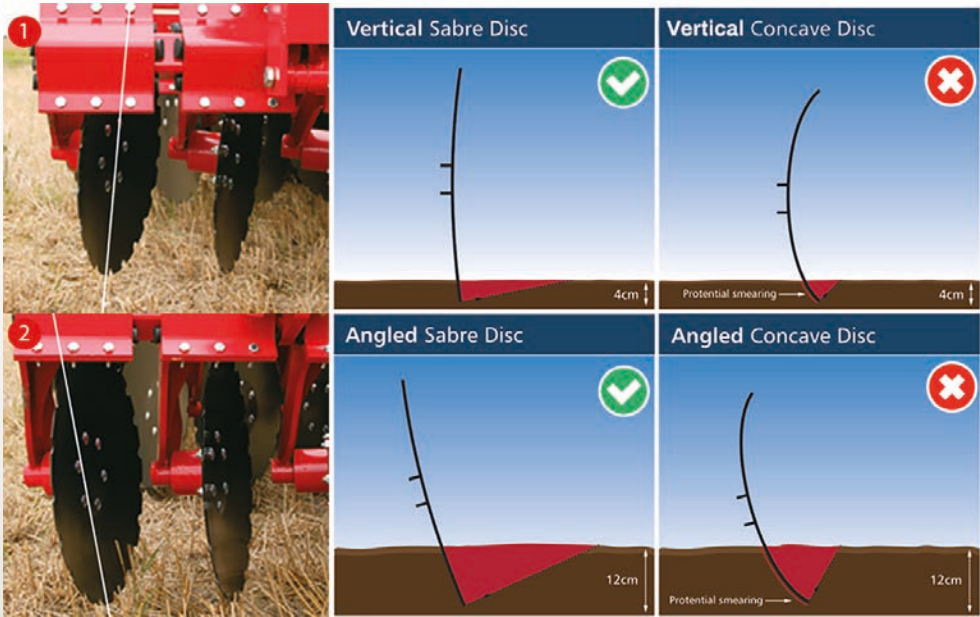
incorporate plant and stubble material - even larger amounts of crop residues such as maize stalks or cover crops are incorporated without problems.

The large discs are staggered, which allows maximum movement and mixing of soil and straw material also during surface cultivation, and since they are also stronger and designed with larger serrations, they get a good grip on the soil. The risk of the rotation being blocked during driving is minimized.

Unique Disc Technology

The HE-VA DSD system (Depth Synchronized Disc) is an aggressive depth control system, which is characterized by the fact that the discs automatically get a more aggressive angle the deeper they penetrate into the ground.

- 1 When working close to the surface, the DSD system ensures that the disc is perpendicular to the ground (vertical), which means the discs push the soil horizontally (laterally) and the entire surface of the soil is moved. The vertical angle ensures that the soil is loosened rather than being scooped out, minimising the risk of smearing and consequent jamming.
- 2 For usage as a deep disc cultivator or for mixing and incorporating crop residues, a more aggressive disc angle is required. The DSD system automatically increases the aggressiveness by changing the angle of the discs relative to the soil surface.



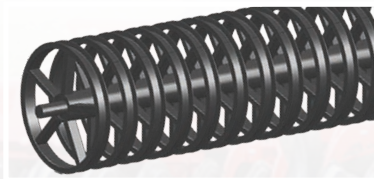
Roller Types

V-Profile



The V-profile roller crushes clods highly efficiently, leaving the soil surface even. Plant, straw and stubble material is pushed down into the surface, thereby promoting decomposition.

U-Profile



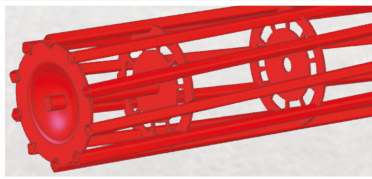
The U-profile roller is designed so that the roller fills with soil during operation, thus achieving good soil-to-soil compaction and giving the soil surface a natural structure without glazing.

Wave Roller



This roller has an optimum compacting effect on light and medium-hard soil types. It leaves a fine soil surface with minimal risk of soil drift.

Square Tube Roller



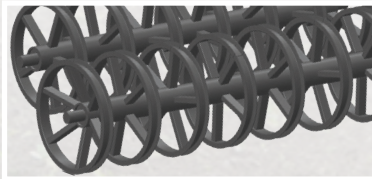
The 550 mm square tube roller provides good depth control and crushes clods in lighter/loose soils.

Twin V-Profile



A Twin roller is a good, maintenancefree solution as the rollers clean each other during operation. The V-profile Twin roller leaves the soil surface slightly corrugated, which has a draining effect and contributes to rapid heating and drying.

Twin U-Profile



A Twin roller is a good, maintenancefree solution as the rollers clean each other during operation. The Twin U-profile roller provides good soil-to-soil compaction without any glazing.

Top-Cutter



Mounting a Top-Cutter in front of the discs on your Disc-Roller XL Contour enables you to finely chop and incorporate crop residues.

The Top-Cutter's six double-sided knives, made from Hardox steel, deliver maximum efficiency and ensure an even and stable soil flow.

Its unique design, featuring a sealed tubular construction, prevents soil and residues from accumulating and sticking to the Top-Cutter, maintaining consistently high efficiency without unnecessary stoppages in the field.