

# FRONT-ROLLER



3.00 m Front-Roller Twin with Ø550/550 mm Star rings.

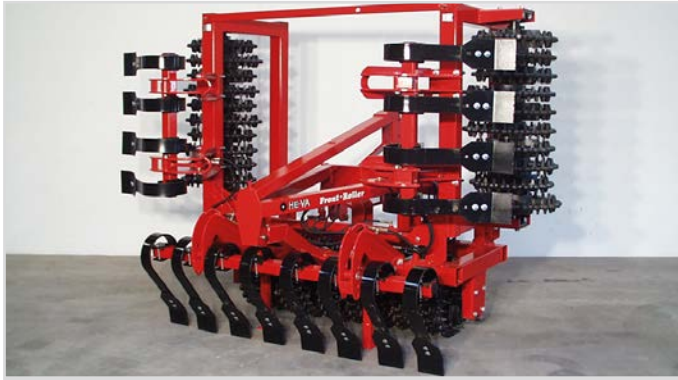
- Autonomous front mounted roller. The pull centre is in front of the rings to ensure free mobility of the machine.
- Automatic centre position when the implement is lifted on the headland.
- Three-point linkage with cat. 2 pins and cat. 2 distance.

## MACHINES

Work Width, m	Type	Ring Type	No. of Rings	Power Req., HP	Transport Width, m	Weight, kg	Item Number
<b>1-SECTION MODELS WITHOUT HYDRAULIC FOLDING</b>							
1.50	Rigid	510 mm/21" Cambridge	29	15	2.00	620	63040-51
1.50	Rigid	560 mm/22.5" Cambridge	29	15	2.00	750	63040-54
1.50	Rigid	620 mm/24" Cambridge	29	15	2.00	820	63040-62
1.50	Rigid	450/500 mm Star ring •	30	15	2.00	640	63040-56
1.50	Rigid	550/600 mm Star ring •	30	15	2.00	790	63040-57
1.50	Rigid	Twin 450/450 mm Star ring •	17	15	2.00	560	63040-09
1.50	Rigid	Twin 550/550 mm Star ring •	17	15	2.00	650	63040-10
1.50	Rigid	485-530 mm Crosskill	15	15	2.00	550	63040-53
1.50	Rigid	550-600 mm Crosskill	15	15	2.00	740	63040-63
1.50	Rigid	600 mm V-Profile ring	12	15	2.00	570	63040-60
1.50	Rigid	700 mm V-Profile ring	10	15	2.00	550	63040-70
2.60	Rigid	510 mm/21" Cambridge	45	20	2.60	930	63043-51
2.60	Rigid	560 mm/22.5" Cambridge	45	20	2.60	1,160	63043-54
2.60	Rigid	620 mm/24" Cambridge	45	20	2.60	1,260	63043-62
2.60	Rigid	450/500 mm Star ring •	42	20	2.60	980	63043-56
2.60	Rigid	550/600 mm Star ring •	42	20	2.60	1,240	63043-57
2.60	Rigid	Twin 450/450 mm Star ring •	31	20	2.60	830	63043-09
2.60	Rigid	Twin 550/550 mm Star ring •	31	20	2.60	980	63043-10
2.60	Rigid	485-530 mm Crosskill	25	20	2.60	730	63043-53
2.60	Rigid	550-600 mm Crosskill	25	20	2.60	1,050	63043-63
2.60	Rigid	600 mm V-Profile ring	19	20	2.60	850	63043-60
2.60	Rigid	700 mm V-Profile ring	17	20	2.60	850	63043-70
3.00	Rigid	510 mm/21" Cambridge	53	25	3.00	1,100	63044-51
3.00	Rigid	560 mm/22.5" Cambridge	53	25	3.00	1,330	63044-54
3.00	Rigid	620 mm/24" Cambridge	53	25	3.00	1,450	63044-62
3.00	Rigid	450/500 mm Star ring •	50	25	3.00	1,110	63044-56
3.00	Rigid	550/600 mm Star ring •	50	25	3.00	1,410	63044-57
3.00	Rigid	Twin 450/450 mm Star ring •	35	25	3.00	820	63044-09
3.00	Rigid	Twin 550/550 mm Star ring •	35	25	3.00	1,000	63044-10
3.00	Rigid	485-530 mm Crosskill	27	25	3.00	830	63044-53
3.00	Rigid	550-600 mm Crosskill	27	25	3.00	1,170	63044-63
3.00	Rigid	600 mm V-Profile ring	23	25	3.00	1,020	63044-60
3.00	Rigid	700 mm V-Profile ring	18	25	3.00	920	63044-70
3.50	Rigid	510 mm/21" Cambridge	61	30	3.50	1,190	63052-51
3.50	Rigid	560 mm/22.5" Cambridge	61	30	3.50	1,500	63052-54
3.50	Rigid	620 mm/24" Cambridge	61	30	3.50	1,640	63052-62
3.50	Rigid	450/500 mm Star ring •	60	30	3.50	1,240	63052-56
3.50	Rigid	550/600 mm Star ring •	60	30	3.50	1,590	63052-57
3.50	Rigid	Twin 450/450 mm Star ring •	41	30	3.50	940	63052-09
3.50	Rigid	Twin 550/550 mm Star ring •	41	30	3.50	1,290	63052-10
3.50	Rigid	485-530 mm Crosskill	31	30	3.50	950	63052-53
3.50	Rigid	550-600 mm Crosskill	31	30	3.50	1,340	63052-63
3.50	Rigid	600 mm V-Profile ring	27	30	3.50	1,150	63052-60
3.50	Rigid	700 mm V-Profile ring	22	30	3.50	1,050	63052-70

• Steel cast ring, 8 year breakage warranty

## MACHINES (CONTINUED)



4.00 m Front-Roller with Crosskill, hydraulic folding and Spring-Board.



2-section 3.00 m Front-Roller with V-Profile, hydraulic folding and Spring-Board.

Work Width, m	Type	Ring Type	No. of Rings	Power Req., HP	Transport Width, m	Weight, kg	Item Number
<b>1-SECTION MODELS WITHOUT HYDRAULIC FOLDING</b>							
4.00	Rigid	510 mm/21" Cambridge	69	35	4,00	1,510	63046-51
4.00	Rigid	560 mm/22.5" Cambridge	69	35	4,00	1,880	63046-54
4.00	Rigid	620 mm/24" Cambridge	69	35	4,00	2,040	63046-62
4.00	Rigid	450/500 mm Star ring	• 68	35	4,00	1,560	63046-56
4.00	Rigid	550/600 mm Star ring	• 68	35	4,00	1,970	63046-57
4.00	Rigid	Twin 450/450 mm Star ring	• 47	35	4,00	1,210	63046-09
4.00	Rigid	Twin 550/550 mm Star ring	• 47	35	4,00	1,450	63046-10
4.00	Rigid	485-530 mm Crosskill	37	35	4,00	1,210	63046-53
4.00	Rigid	550-600 mm Crosskill	37	35	4,00	1,680	63046-63
4.00	Rigid	600 mm V-Profile ring	30	35	4,00	1,390	63046-60
4.00	Rigid	700 mm V-Profile ring	24	35	4,00	1,320	63046-70
<b>2-SECTION MODELS WITH HYDRAULIC FOLDING</b>							
3.00	Foldable	510 mm/21" Cambridge	<sup>1*</sup> 50	25	2,13	1,240	63041-51
3.00	Foldable	560 mm/22.5" Cambridge	<sup>1*</sup> 50	25	2,13	1,410	63041-54
3.00	Foldable	620 mm/24" Cambridge	<sup>1*</sup> 50	25	2,13	1,630	63041-62
3.00	Foldable	450/500 mm Star ring	•/ <sup>1*</sup> 24	25	2,13	1,290	63041-56
3.00	Foldable	550/600 mm Star ring	•/ <sup>1*</sup> 24	25	2,13	1,590	63041-57
3.00	Foldable	Twin 450/450 mm Star ring	•/ <sup>1*</sup> 48	25	2,13	1,120	63041-09
3.00	Foldable	Twin 550/550 mm Star ring	•/ <sup>1*</sup> 48	25	2,13	1,300	63041-10
3.00	Foldable	485-530 mm Crosskill	<sup>1*</sup> 24	25	2,13	1,010	63041-53
3.00	Foldable	550-600 mm Crosskill	<sup>1*</sup> 24	25	2,13	1,350	63041-63
3.00	Foldable	600 mm V-Profile ring	<sup>1*</sup> 20	25	2,13	1,200	63041-60
3.00	Foldable	700 mm V-Profile ring	<sup>1*</sup> 18	25	2,13	1,150	63041-70
<b>3-SECTION MODELS WITH HYDRAULIC FOLDING</b>							
4.00	Foldable	510 mm/21" Cambridge	<sup>1*</sup> 67	35	2,60	1,660	63045-51
4.00	Foldable	560 mm/22.5" Cambridge	<sup>1*</sup> 67	35	2,65	2,020	63045-54
4.00	Foldable	620 mm/24" Cambridge	<sup>1*</sup> 67	35	2,70	2,180	63045-62
4.00	Foldable	450/500 mm Star ring	•/ <sup>1*</sup> 70	35	2,67	1,710	63045-56
4.00	Foldable	550/600 mm Star ring	•/ <sup>1*</sup> 70	35	2,75	2,120	63045-57
4.00	Foldable	Twin 450/450 mm Star ring	•/ <sup>1*</sup> 43	35	2,67	1,520	63045-09
4.00	Foldable	Twin 550/550 mm Star ring	•/ <sup>1*</sup> 43	35	2,75	1,760	63045-10
4.00	Foldable	485-530 mm Crosskill	<sup>1*</sup> 37	35	2,70	1,360	63045-53
4.00	Foldable	550-600 mm Crosskill	<sup>1*</sup> 37	35	2,75	1,830	63045-63
4.00	Foldable	600 mm V-Profile ring	<sup>1*</sup> 28	35	2,70	1,540	63045-60
4.00	Foldable	700 mm V-Profile ring	<sup>1*</sup> 24	35	2,60	1,470	63045-70
4.50	Foldable	510 mm/21" Cambridge	<sup>1*</sup> 75	35	2,60	1,886	63050-51
4.50	Foldable	560 mm/22.5" Cambridge	<sup>1*</sup> 75	35	2,65	2,131	63050-54
4.50	Foldable	620 mm/24" Cambridge	<sup>1*</sup> 75	35	2,70	2,281	63050-62
4.50	Foldable	450/500 mm Star ring	•/ <sup>1*</sup> 70	35	2,67	1,724	63050-56
4.50	Foldable	550/600 mm Star ring	•/ <sup>1*</sup> 70	35	2,75	2,098	63050-57
4.50	Foldable	Twin 450/450 mm Star ring	•/ <sup>1*</sup> 47	35	2,67	1,477	63050-09
4.50	Foldable	Twin 550/550 mm Star ring	•/ <sup>1*</sup> 47	35	2,75	1,726	63050-10
4.50	Foldable	485-530 mm Crosskill	<sup>1*</sup> 34	35	2,70	1,675	63050-53
4.50	Foldable	550-600 mm Crosskill	<sup>1*</sup> 34	35	2,75	1,717	63050-63
4.50	Foldable	600 mm V-Profile ring	<sup>1*</sup> 32	35	2,70	1,599	63050-60
4.50	Foldable	700 mm V-Profile ring	<sup>1*</sup> 26	35	2,75	1,690	63050-70

<sup>1\*</sup> Requires 1 double-acting oil outlet.

• Steel cast ring, 8 year breakage warranty

## MACHINES (CONTINUED)

Work Width, m	Type	Ring Type	No. of Rings	Power Req., HP	Transport Width, m	Weight, kg	Item Number
<b>3-SECTION MODELS WITH HYDRAULIC FOLDING</b>							
5.00	Foldable	510 mm/21" Cambridge <sup>1*</sup>	95	40	2.90	1,960	63048-51
5.00	Foldable	560 mm/22.5" Cambridge <sup>1*</sup>	95	40	2.95	2,440	63048-54
5.00	Foldable	450/500 mm Star ring •/1*	90	40	2.92	2,060	63048-56
5.00	Foldable	550/600 mm Star ring •/1*	90	40	3.00	2,570	63048-57
5.00	Foldable	Twin 450/450 mm Star ring •/1*	59	40	2.92	1,780	63048-09
5.00	Foldable	Twin 550/550 mm Star ring •/1*	59	40	3.00	1,780	63048-10
5.00	Foldable	485-530 mm Crosskill <sup>1*</sup>	47	40	2.95	1,590	63048-53
5.00	Foldable	550-600 mm Crosskill <sup>1*</sup>	47	40	3.00	2,180	63048-63
5.00	Foldable	600 mm V-Profile ring <sup>1*</sup>	38	40	2.95	1,810	63048-60
5.00	Foldable	700 mm V-Profile ring <sup>1*</sup>	30	40	2.85	1,820	63048-70
6.00	Foldable	510 mm/21" Cambridge <sup>1*</sup>	115	50	2.90	2,350	63047-51
6.00	Foldable	560 mm/22.5" Cambridge <sup>1*</sup>	115	50	2.95	2,940	63047-54
6.00	Foldable	450/500 mm Star ring •/1*	110	50	2.92	2,410	63047-56
6.00	Foldable	550/600 mm Star ring •/1*	110	50	3.00	3,030	63047-57
6.00	Foldable	Twin 450/450 mm Star ring •/1*	71	50	2.92	2,140	63047-09
6.00	Foldable	Twin 550/550 mm Star ring •/1*	71	50	3.00	2,500	63047-10
6.00	Foldable	485-530 mm Crosskill <sup>1*</sup>	57	50	2.95	1,910	63047-53
6.00	Foldable	550-600 mm Crosskill <sup>1*</sup>	57	50	3.00	2,630	63047-63
6.00	Foldable	600 mm V-Profile ring <sup>1*</sup>	46	50	2.95	2,170	63047-60
6.00	Foldable	700 mm V-Profile ring <sup>1*</sup>	36	50	2.85	2,180	63047-70

<sup>1\*</sup>Requires 1 double-acting oil outlet.

• Steel cast ring, 8 year breakage warranty

# FRONT-ROLLER COMPACT



Autonomous front mounted roller with free mobility



Autonomous front mounted roller with free mobility



Front-Roller with fixed three-point hitch  
- not self-steering

- Available as both an autonomous front mounted roller with free mobility and a non-autonomous front mounted roller with a rigid frame.
- Three-point linkage with cat. 2 pins and cat. 2 distance.

## MACHINES

Work Width, m	Type	Ring Type	No. of Rings	Power Req., HP	Transport Width, m	Front-Roller Compact Autonomous		Front-Roller Compact Non-Autonomous	
						Weight, kg	Item Number	Weight, kg	Item Number
1.50	Rigid	510 mm/21" Cambridge	29	15	2.00	-	64101-46	-	64105-46
1.50	Rigid	560 mm/22.5" Cambridge	29	15	2.00	-	64101-54	-	64105-54
1.50	Rigid	620 mm/24" Cambridge	29	15	2.00	-	64101-62	-	64105-62
1.50	Rigid	450/500 mm Star ring	• 28	15	2.00	-	64101-56	-	64105-56
1.50	Rigid	550/600 mm Star ring	• 28	15	2.00	-	64101-57	-	64105-57
1.50	Rigid	Twin 450/450 mm Star ring	• 17	15	2.00	-	64101-09	-	64105-09
1.50	Rigid	Twin 550/550 mm Star ring	• 17	15	2.00	-	64101-10	-	64105-10
1.50	Rigid	485-530 mm Crosskill	15	15	2.00	-	64101-53	-	64105-53
1.50	Rigid	550-600 mm Crosskill	15	15	2.00	-	64101-63	-	64105-63
1.50	Rigid	600 mm V-Profile ring	12	15	2.00	-	64101-60	-	64105-60
2.60	Rigid	510 mm/21" Cambridge	45	20	2.60	-	64102-46	-	64106-46
2.60	Rigid	560 mm/22.5" Cambridge	45	20	2.60	-	64102-54	-	64106-54
2.60	Rigid	620 mm/24" Cambridge	45	20	2.60	-	64102-62	-	64106-62
2.60	Rigid	450/500 mm Star ring	• 42	20	2.60	-	64102-56	-	64106-56
2.60	Rigid	550/600 mm Star ring	• 42	20	2.60	-	64102-57	-	64106-57
2.60	Rigid	Twin 450/450 mm Star ring	• 31	20	2.60	-	64102-09	-	64106-09
2.60	Rigid	Twin 550/550 mm Star ring	• 31	20	2.60	-	64102-10	-	64106-10
2.60	Rigid	485-530 mm Crosskill	23	20	2.60	-	64102-53	-	64106-53
2.60	Rigid	550-600 mm Crosskill	23	20	2.60	-	64102-63	-	64106-63
2.60	Rigid	600 mm V-Profile ring	19	20	2.60	-	64102-60	-	64106-60
3.00	Rigid	510 mm/21" Cambridge	53	25	3.00	1,105	64103-46	-	64107-46
3.00	Rigid	560 mm/22.5" Cambridge	53	25	3.00	-	64103-54	-	64107-54
3.00	Rigid	620 mm/24" Cambridge	53	25	3.00	-	64103-62	-	64107-62
3.00	Rigid	450/500 mm Star ring	• 50	25	3.00	-	64103-56	-	64107-56
3.00	Rigid	550/600 mm Star ring	• 50	25	3.00	-	64103-57	-	64107-57
3.00	Rigid	Twin 450/450 mm Star ring	• 35	25	3.00	-	64103-09	-	64107-09
3.00	Rigid	Twin 550/550 mm Star ring	• 35	25	3.00	-	64103-10	-	64107-10
3.00	Rigid	485-530 mm Crosskill	27	25	3.00	-	64103-53	-	64107-53
3.00	Rigid	550-600 mm Crosskill	27	25	3.00	1,300	64103-63	-	64107-63
3.00	Rigid	600 mm V-Profile ring	23	25	3.00	-	64103-60	-	64107-60
3.00	Rigid	595 mm Cutter-Roller	-	-	3.00	-	-	-	64107-64
3.50	Rigid	510 mm/21" Cambridge	61	30	3.50	1,275	64104-46	-	64108-46
3.50	Rigid	560 mm/22.5" Cambridge	61	30	3.50	-	64104-54	-	64108-54
3.50	Rigid	620 mm/24" Cambridge	61	30	3.50	-	64104-62	-	64108-62
3.50	Rigid	450/500 mm Star ring	• 60	30	3.50	-	64104-56	-	64108-56
3.50	Rigid	550/600 mm Star ring	• 60	30	3.50	-	64104-57	-	64108-57
3.50	Rigid	Twin 450/450 mm Star ring	• 41	30	3.50	-	64104-09	-	64108-09
3.50	Rigid	Twin 550/550 mm Star ring	• 41	30	3.50	-	64104-10	-	64108-10
3.50	Rigid	485-530 mm Crosskill	31	30	3.50	-	64104-53	-	64108-53
3.50	Rigid	550-600 mm Crosskill	31	30	3.50	1,500	64104-63	-	64108-63
3.50	Rigid	600 mm V-Profile ring	27	30	3.50	-	64104-60	-	64108-60
3.50	Rigid	595 mm Cutter-Roller	-	-	3.50	-	-	-	64108-64

• Steel cast ring, 8 year breakage warranty

## EXTRA EQUIPMENT

- Front-harrow is with spindle adjustment of working depth and with 12x45 mm tines.
- Spring-Board is with mechanical adjustment of the height of the tine row and hydraulic adjustment of the preparation degree/working depth.
- Spring-Board is a very strong construction with 10x80 mm tines.
- Transverse locking system with possible individual connection and disconnection, very easy w/o use of any tools.
- 2.60, 3.00 and 3.50 m front harrow and Spring-Board can also be mounted on 1.50 m Front-Roller.
- Stabilization device for hydr. foldable models: is recommended for models with Spring-Board in combination with big working widths and high speed.



*Edge equipment set for front harrow.*

Description	Weight, kg	Item Number
LED marking lights with clear and red glass, rigid models	4	63040-01
LED marking lights on mounting bar with clear and red glass, 4.00 m hydr. model	14	67033-02
LED marking lights on mounting bar with clear and red glass, 4.50 + 6.00 m hydr.	17	67033-03
LED marking lights on mounting bar with clear and red glass, 2-section 3.00 m hydr. model	8	63041-01
Set of reflective warning boards (2 pieces)	6	690160075
Double three-point linkage: hereby the Front-Roller can be mounted both front and rear on the tractor	-	63040-02
Weight console set, for bolting on of add. weight, 2 pcs.	32	67055-00
Stabilization device f/rigid models (except w/700 mm V-Profile ring)	16	67086-08
Stabilization device f/hydr.fold.models and rigid w/700 mm V-Profile ring	16	67086-10
Stabilization device f/hydr. foldable models – 2-sections models	15	67086-09
Mechanical double change over valve, change between Spring-Board and hydraulic folding.	5	67086-15
Stone box set (2 pieces)	32	630555005
Stone box set (2 pieces) for hydr. foldable models	32	630555009
Double frame, 1.50 m / 2.60 m / 3.00 m rigid, 3.50 m	<sup>1/2*</sup> 42	67056-00
Double frame, 4.00 m rigid, not possible on hydr. fold. models	<sup>1/2*</sup> 78	67057-00

Work Width, m	Type	Description	Weight, kg	Item Number
<b>2-ROW FRONT HARROW – 12 X 45 MM TINES</b>				
2.60	Rigid	Front harrow with 15 tines, 2-row, with spindle depth control	158	63130-50
3.00	Rigid	Front harrow with 17 tines, 2-row, with spindle depth control	177	63131-50
3.00	Foldable	Front harrow with 17 tines, 2-row, with spindle depth control (2-Section)	185	63141-00
3.50	Rigid	Front harrow with 20 tines, 2-row, with spindle depth control	215	63137-50
4.00	Rigid	Front harrow with 23 tines, 2-row, with spindle depth control	254	63132-50
4.00	Foldable	Front harrow with 23 tines, 2-row, with spindle depth control	275	63134-50
4.50	Foldable	Front harrow with 25 tines, 2-row, with spindle depth control	436	63139-50
5.00	Foldable	Front harrow with 29 tines, 2-row, with spindle depth control	330	63135-50
6.00	Foldable	Front harrow with 35 tines, 2-row, with spindle depth control	397	63133-50
-	-	Extension adapter f/front-harrow, mounting on Front-Roller Twin	4	63138-00
-	-	Edge equipment set for 2-row front-harrow	18	67058-00
<b>3-ROW FRONT HARROW – 12 X 65 MM TINES</b>				
2.60	Rigid	Front harrow with 15 tines, 3-row, with spindle depth control	183	63130-51
3.00	Rigid	Front harrow with 17 tines, 3-row, with spindle depth control	205	63131-51
3.00	Foldable	Front harrow with 17 tines, 3-row, with spindle depth control (2-Section)	213	63141-51
3.50	Rigid	Front harrow with 20 tines, 3-row, with spindle depth control	234	63137-51
4.00	Rigid	Front harrow with 23 tines, 3-row, with spindle depth control	292	63132-51
4.00	Foldable	Front harrow with 23 tines, 3-row, with spindle depth control	314	63134-51
4.50	Foldable	Front harrow with 25 tines, 3-row, with spindle depth control	617	63139-51
5.00	Foldable	Front harrow with 29 tines, 3-row, with spindle depth control	378	63135-51
6.00	Foldable	Front harrow with 35 tines, 3-row, with spindle depth control	455	63133-51
-	-	Goose foot point 180x6 mm, only for 12x65 mm tines (Additional price per m)	4	3401016
-	-	Extension adapter f/front-harrow, mounting on Front-Roller Twin	4	63138-00
-	-	Edge equipment set for 3-row front-harrow	32	67058-10

<sup>1</sup>If both a front harrow and Spring-Board are wanted, a double frame must be mounted.

<sup>2</sup>Cannot be mounted on Front-Roller Twin and hydraulically foldable models.

## EXTRA EQUIPMENT (CONTINUED)

Work Width, m	Type	Description	Weight, kg	Item Number
<b>SPRING-BOARD</b>				
-	-	Extension adapter f/Spring-Board, mounting on Front-Roller Twin	5	63138-10
2.60	Rigid	Spring-Board with hydraulic depth control, 10 tines	185	63323-00
3.00	-	Spring-Board with hydraulic depth control, for 1.50 m Front-Roller	220	63325-00
3.00	Rigid	Spring-Board with hydraulic depth control, 12 tines	205	63324-00
3.00	Foldable	Spring-Board with hydraulic depth control, 12 tines (2-Section)	245	63321-00
3.50	-	Spring-Board with hydraulic depth control, for 1.50 m Front-Roller	255	63322-50
3.50	Rigid	Spring-Board with hydraulic depth control, 14 tines	235	63322-00
4.00	-	Spring-Board with hydraulic depth control, for 1.50 m Front-Roller	260	63326-50
4.00	Rigid	Spring-Board with hydraulic depth control, 16 tines	260	63326-00
4.00	Foldable	Spring-Board with hydraulic depth control, 16 tines	460	63328-00
4.50	Foldable	Spring-Board with hydraulic depth control, 18 tines	402	63320-00
5.00	Foldable	Spring-Board with hydraulic depth control, 20 tines	515	63329-00
6.00	Foldable	Spring-Board with hydraulic depth control, 24 tines	570	63327-00
-	-	Edge equipment set for Spring-Board tines	11	63301-00
<b>SPRING-BOARD WITH SLICING PLATES</b>				
-	-	Extension adapter f/Spring-Board, mounting on Front-Roller Twin	5	63138-10
2.60	Rigid	Spring-Board with hydraulic depth control, 10 tines	185	63423-00
3.00	Rigid	Spring-Board with hydraulic depth control, 12 tines	205	63424-00
3.00	Foldable	Spring-Board with hydraulic depth control, 12 tines (2-Section)	245	63441-00
3.50	Rigid	Spring-Board with hydraulic depth control, 14 tines	255	63422-00
4.00	Rigid	Spring-Board with hydraulic depth control, 16 tines	260	63426-00
4.00	Foldable	Spring-Board with hydraulic depth control, 16 tines	460	63428-00
4.50	Foldable	Spring-Board with hydraulic depth control, 18 tines	405	63420-00
5.00	Foldable	Spring-Board with hydraulic depth control, 20 tines	515	63429-00
6.00	Foldable	Spring-Board with hydraulic depth control, 24 tines	570	63427-00
<b>TRANSVERSE LOCKING SYSTEM - CONNECTS THE SPRING-BOARD TINES</b>				
2.60	Rigid	Complete set for Spring-Board	30	63333-00
3.00	Rigid	Complete set for Spring-Board	35	63334-00
3.00	Foldable	Complete set for Spring-Board (2-Section)	39	63342-00
3.50	Rigid	Complete set for Spring-Board	41	63332-00
4.00	Foldable	Complete set for Spring-Board	47	63336-00
4.00	Foldable	Complete set for Spring-Board	51	63338-00
4.50	Foldable	Complete set for Spring-Board	-	63335-00
5.00	Foldable	Complete set for Spring-Board	55	63339-00
6.00	Foldable	Complete set for Spring-Board	71	63337-00



<sup>1</sup>Requires 1 additional double-acting oil outlet.

<sup>2</sup>Can manually be changed to transport width 1.85 m, 2.35 or 2.85 m.

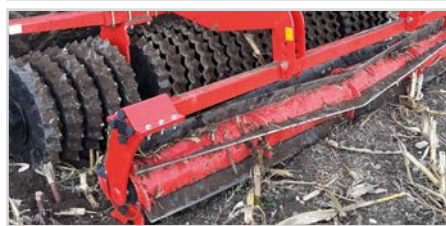


### "EASY-CHANGE" QUICK CHANGE SYSTEM OF WEAR POINTS INCL. ONE SET OF FLAT WEAR POINTS AND ONE SET OF SLICING PLATE POINTS WITH 3 TINES.

Description	Item Number
Additional price per tine in relation to standard Spring-Board	63302-00
Price per tine for retrofitting	63302-01



Top-Cutter



Top-Cutter on Front-Roller

TOP-CUTTER				
Work Width, m	Type	Description	Weight, kg	Item Number
2.60	Rigid	Top-Cutter	350	67410-03
3.00	Rigid	Top-Cutter	370	67410-05
3.00	Foldable	Top-Cutter (2-Section)	395	67410-11
3.50	Rigid	Top-Cutter	400	67410-07
4.00	Rigid	Top-Cutter	460	67410-09
4.00	Foldable	Top-Cutter	635	67410-13
4.50	Foldable	Top-Cutter	690	67410-01
5.00	Foldable	Top-Cutter	730	67410-15
6.00	Foldable	Top-Cutter	785	67410-17
2.60	Rigid	Spring-Board mounted on Top-Cutter bracket	160	67410-04
3.00	Rigid	Spring-Board mounted on Top-Cutter bracket	185	67410-06
3.00	Foldable	Spring-Board mount on Top-Cutter bracket (2-Section)	205	67410-12
3.50	Rigid	Spring-Board mounted on Top-Cutter bracket	215	67410-08
4.00	Rigid	Spring-Board mounted on Top-Cutter bracket	245	67410-10
4.00	Foldable	Spring-Board mounted on Top-Cutter bracket	420	67410-14
4.50	Foldable	Spring-Board mounted on Top-Cutter bracket	475	67410-02
5.00	Foldable	Spring-Board mounted on Top-Cutter bracket	525	67410-16
6.00	Foldable	Spring-Board mounted on Top-Cutter bracket	560	67410-18