

GRASS-TILLER



2.50 m with Quick-Push and Star Roller.



1.80 m with Quick-Push and Star Roller.



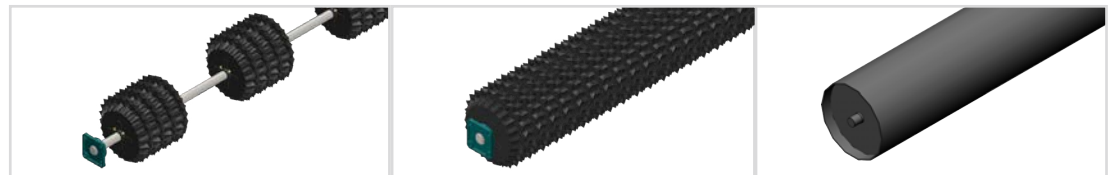
Ø400 mm disc in front of the tine.



2.50 m with hydr. release system and synchronic Star Roller.

- Optimal clearance with a frame height of 820 mm.
- Strong frame construction, 180x180x8 mm sectional tubes.
- Hydr. depth control from 0 – 500 mm. (Requires double-acting oil outlet).
- 2 stone protection types: Quick-Push or Hydraulic automatic.
- Infinitely variable tine spacing, depending on the models and number of tines.
- Ø400 mm scalloped disc-coulters, stone protected via rubber suspension, depth adjustable via 2 spindles.
- 1.50 - 1.80: Three-point linkage with cat. 1+2 pins and cat. 2 distance.
- 2.50 - 3.50: Three-point linkage with cat. 3 pins and cat. 2 distance.
- Tine height under the frame 820 mm.
- Max. working depth 500 mm.

MACHINES



Star Roller Ø450/Ø500 mm
(synchronic 400 mm width per tine)

Star Roller Ø450/500 mm
(full width)

Plain Roller Ø406 mm

Work Width, m	Stone Protection	No. of Tines	Star Roller Ø450/Ø500 mm (synchronic 400 mm width per tine)		Star Roller Ø450/500 mm (full width)		Plain Roller Ø406 mm	
			Weight, kg	Item Number	Weight, kg	Item Number	Weight, kg w/o / w water	Item Number
1.50	Quick-Push	2	-	64544-74	1,050	64544-78	-	64544-82
1.50	Quick-Push	3	-	64544-75	1,165	64544-79	-	64544-83
1.50	Hydr. auto.	2	-	64544-76	1,243	64544-80	-	64544-84
1.50	Hydr. auto.	3	-	64544-77	1,385	64544-81	-	64544-85
1.80	Quick-Push	2	1,060	64544-14	1,160	64544-34	-	64544-88
1.80	Quick-Push	3	-	64544-18	-	64544-38	-	64544-89
1.80	Hydr. auto.	2	1,110	64544-15	1,338	64544-35	-	64544-90
1.80	Hydr. auto.	3	-	64544-19	1,480	64544-39	-	64544-91
2.50	Quick-Push	3	1,435	64544-02	1,850	64544-22	-	64544-94
2.50	Hydr. auto.	3	1,485	64544-03	1,900	64544-23	-	64544-95
3.00	Quick-Push	3	1,475	64544-06	2,060	64544-26	-	64544-64
3.00	Quick-Push	4	1,680	64544-07	2,135	64544-27	-	64544-65
3.00	Hydr. auto.	3	1,565	64544-08	2,150	64544-28	-	64544-66
3.00	Hydr. auto.	4	1,820	64544-09	2,285	64544-29	-	64544-67
3.50	Quick-Push	5	1,960	64544-11	2,470	64544-31	-	64544-97
3.50	Hydr. auto.	5	2,080	64544-12	2,590	64544-32	-	64544-98

Work Width, m	Stone Protection	No. of Tines	Standard Row Spacing, cm	Total Tine Spacing between Outer Tines, cm	Transport Width, m	Power Req., HP
1.50	Quick-Push	2	100	100	1.50	60-100
1.50	Quick-Push	3	50	100	1.50	90-120
1.50	Hydraulic auto release	2	100	100	1.50	60-100
1.50	Hydraulic auto release	3	50	100	1.50	90-120
1.80	Quick-Push	2	120	130	1.80	60-100
1.80	Quick-Push	3	60	130	1.80	90-120
1.80	Hydraulic auto release	2	120	130	1.80	60-100
1.80	Hydraulic auto release	3	60	130	1.80	90-120
2.50	Quick-Push	3	90	200	2.50	90-120
2.50	Hydraulic auto release	3	90	200	2.50	90-120
3.00	Quick-Push	3	100	250	3.00	90-120
3.00	Quick-Push	4	75	250	3.00	110-160
3.00	Hydraulic auto release	3	100	250	3.00	90-120
3.00	Hydraulic auto release	4	75	250	3.00	110-160
3.50	Quick-Push	5	70	300	3.50	130-200
3.50	Hydraulic auto release	5	70		3.50	130-200

*All models: Max 250 HP and require 1 double-acting oil outlet

IMPORTANT: If a change of stated row spacing is wanted, please inform when placing an order.

STANDARD EQUIPMENT

- Hydr. depth control incl. depth scale.
- Standard with Ø400 mm scalloped discs in front of the tine, stone protected by rubber suspension and depth adjustable via 2 spindles.
- For Quick-push stone protection: 8 steps per bolt.
- Points with 200 mm wing share mounted on 25 mm wide tine.
- Tine staggering: 200 mm.

EXTRA EQUIPMENT

Description	Weight, kg	Item Number
LED lights complete w/wire and socket	8	64509-01
Set of reflective warning boards (2 pieces)	8	67055-74
Cat.II pins for three-point mounting (Additional price)	-	64509-08
Cat. 3 for three-point mounting (1010 mm middle - middle) (Additional price)	-	64545-30
Points with 120 mm wing shares (Price reduction per tine)	-	645000043A
Points 120 mm with hard metal plate (Additional price per tine)	-	645000043TA
Points with 350 mm wing shares (Additional price per tine)	-	645000063A
Points 200 mm with hard metal plate (Additional price per tine)	16	645000044TA
Points with 120 mm wing shares, Longlife, with hard metal (Additional price per tine)	-	645000043HDA
Points with 200 mm wing shares, Longlife, with hard metal (Additional price per tine)	19	645000044HDA
Points with 350 mm wing shares, Longlife, with hard metal (Additional price per tine)	-	645000063HDA
Easy-Draft kit. 15 mm tine w/120 mm wear point with hard metal plate. Max. working depth: 300 mm. Quick-Push stone protection (Additional price per tine)	-	64511-19
Easy-Draft kit. 15 mm tine w/120 mm wear point with hard metal plate. Max. working depth: 300 mm. Quick-Push stone protection (Retrofitting per tine)	90	64511-20
Easy-Draft kit. 15 mm tine w/120 mm wear point with hard metal plate. Max. working depth: 300 mm. Hydraulic auto release (Additional price per tine)	125	64509-09
Easy-Draft kit. 15 mm tine w/120 mm wear point with hard metal plate. Max. working depth: 300 mm. Hydraulic auto release (Retrofitting per tine)	125	64511-18
120 mm wear point for Easy-Draft, with hard metal plate in center + wings (Additional price per tine)	-	645000056TA
200 mm wear point for Easy-Draft, with hard metal plate in center (Additional price per tine)	-	645000054A
200 mm wear point for Easy-Draft, with hard metal plate in center + wings (Additional price per tine)	-	645000054TA
120 mm welded wear point for Easy-Draft (Additional price per tine)	-	645000056SA
Tine reinforcement, hard metal 60x25x15 mm incl. factory fitting on new tine. Recommended when tilling > 350 mm. Omittable for item numbers 645000044T / 645000043T. (Additional price per tine)	-	645000085
Tine reinforcement, hard metal 60x15x15 mm incl. factory-mounting on new tine. Only applied for Easy-Draft (Additional price per tine)	-	645000083
Ø470 mm indented disc and strong bearing (Additional price per tine)	-	1250061
Check valve (pilot-controlled) for hydr. depth control	-	64543-85
Tine for retrofitting complete, Quick-Push stone protection	85	64543-98
Tine for retrofitting complete, Hydr. stone protection	121	64543-99
Set of scalloped disc, Ø400 mm, (per tine) for retrofitting (left)	16	645000129
Set of scalloped disc, Ø400 mm, (per tine) for retrofitting (right)	16	645000130



Mounting set for Multi-Seeder, incl. mounting on a new Grass-Tiller.

One special dosing roll for rape/fertilizer is included in the price. One of the following seeding methods is to be chosen as well as one of the Multi-Seeder models.



Work Width, m	Type	Description	Wide sowing before packer roller	Item Number
1.50	Rigid	Multi-Seeder without Auto-Controller		64545-01
1.50	Rigid	Multi-Seeder with Auto-Controller		64545-02
1.80	Rigid	Multi-Seeder without Auto-Controller		64545-05
1.80	Rigid	Multi-Seeder with Auto-Controller		64545-06
2.50	Rigid	Multi-Seeder without Auto-Controller		64545-09
2.50	Rigid	Multi-Seeder with Auto-Controller		64545-10
3.00	Rigid	Multi-Seeder without Auto-Controller		64545-13
3.00	Rigid	Multi-Seeder with Auto-Controller		64545-14
3.50	Rigid	Multi-Seeder without Auto-Controller		64545-17
3.50	Rigid	Multi-Seeder with Auto-Controller		64545-18
-	Rigid	Platform with steps		64545-25