

# DISC-ROLLER CLASSIC (THREE-POINT MOUNTED)



- Sabre disc” 510 x 4 mm large scalloped disc with specially designed coulter profile - thus ensuring an improved cutting of surface stubble preparation.
- Maintenance-free disc-hubs.
- Working depth of up to 125 mm in minimal tillage cultivations.
- DSD – Technology: Depth Synchronised Disc-Aggressiveness.
- Available with 600 mm V-Profile rings. Makes the Disc-Roller Classic suitable for stubble cultivations, seed bed preparations or land packing after ploughing.
- Available with 600 mm Wave roller that is good for carrying up the machine’s weight on light and loose soil.
- Available with 550 mm Square Tube Roller made of strong sectional tubes. This roller is good on loose soil and it is reducing the lifting requirement.
- Three-point linkage with cat. 3 pins and cat. 2 distance.

## MACHINES

Model, m	Work Width, m	Roller Type	No. of Rings	No. of Discs	Power Req., HP	Weight, kg	Item Number
<b>1-SECTION, RIGID WITHOUT HYDRAULIC FOLDING</b>							
2.50	2.25	Square Tube Roller / 550 mm	-	18	90 +	1,260	63090-45
2.50	2.25	Wave roller / 600 mm	20	18	90 +	1,560	63090-73
2.50	2.25	V-Profile Roller / 600 mm	16	18	90 +	1,780	63090-60
3.00	2.75	Square Tube Roller / 550 mm	-	22	100 +	1,460	63091-45
3.00	2.75	Wave roller / 600 mm	24	22	100 +	1,810	63091-73
3.00	2.75	V-Profile Roller / 600 mm	20	22	100 +	2,080	63091-60
3.50	3.25	Square Tube Roller / 550 mm	-	26	110 +	1,670	63096-45
3.50	3.25	Wave roller / 600 mm	28	26	110 +	2,125	63096-73
3.50	3.25	V-Profile Roller / 600 mm	23	26	110 +	2,395	63096-60
4.00	3.75	Square Tube Roller / 550 mm	-	30	120 +	1,880	63092-45
4.00	3.75	Wave roller / 600 mm	32	30	120 +	2,440	63092-52
4.00	3.75	V-Profile Roller / 600 mm	26	30	120 +	2,710	63092-50
<b>2-SECTION, WITH HYDRAULIC FOLDING</b>							
4.00	3.75	Square Tube Roller / 550 mm	<sup>1*</sup>	30	120 +	-	63092-74
4.00	3.75	Wave roller / 600 mm	<sup>1*</sup>	32	120 +	2,760	63092-73
4.00	3.75	V-Profile Roller / 600 mm	<sup>1*</sup>	26	120 +	3,120	63092-60
5.00	4.75	Square Tube Roller / 550 mm	<sup>1*</sup>	38	150 +	-	63093-74
5.00	4.75	Wave roller / 600 mm	<sup>1*</sup>	40	150 +	3,290	63093-73
5.00	4.75	V-Profile Roller / 600 mm	<sup>1*</sup>	32	150 +	3,750	63093-60

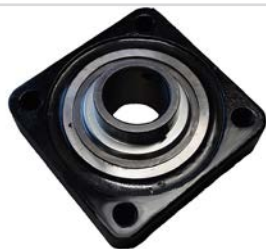
<sup>1\*</sup>Requires 2 double-acting oil outlets.

## STANDARD EQUIPMENT

- Hydraulic adjustment of working depth.
- Edge equipment with disc for retain soil on right side.
- Scraper between the rings (V-Profile Roller and Wave Roller).
- 60 mm axles fitted with 60 mm triple-sealed ball bearings.

## EXTRA EQUIPMENT

Work Width, m	Description	Weight, kg	Item Number
2.50 - 4.00	LED lights with wire and socket, rigid models	3	63091-01
4.00 - 5.00	LED lights with wire and socket, hydraulic models	3	63092-01
2.50 - 5.00	Set of reflective warning boards (2 pieces)	8	67055-74
2.50 - 4.00	Electrical depth stop for rigid models	4	63091-85
4.00 - 5.00	Electrical depth stop for hydraulic models	8	63092-85
2.50	Material damper guard	45	63090-98
3.00	Material damper guard	60	63091-98
3.50	Material damper guard	70	63096-98
4.00	Material damper guard	80	63092-98
5.00	Material damper guard	100	63093-98
2.50 - 4.00	Trail kit for 1-section models, 11.5/80x15.3	550	63091-55
4.00 - 5.00	Trail kit for 2-section models, 400/60x15.3	560	63092-55
2.50 - 4.00	Rubber sealed/non-lubricant ball bearings (Additional price per set)	16	63090-02
4.00 - 5.00	Rubber sealed/non-lubricant ball bearings (Additional price per set)	33	63090-04
-	Bearing protector for packing roller (Per unit)	1	7355054
-	Ø510 x 5 mm "Sabre discs" HD aggressive (Additional price per m)	8	63090-10



Rubber sealed ball bearings.



Bearing protector for packing roller.



Ø510 x 5 mm "Sabre discs" HD aggressive.

### MOUNTING SET FOR MULTI-SEEDER INCL. STEPS, INCL. MOUNTING ON NEW DISC-ROLLER MAX. 300 KG LOAD IN FINE SEED HOPPER.

Work Width, m	Type	Item Number - 8 Outlets	Item Number - 12 Outlets
2.50	Rigid	63090-12	-
3.00	Rigid	63091-12	-
3.50	Rigid	63096-12	-
4.00	Rigid	63092-12	63092-11
4.00	Foldable	63092-16	63092-13
5.00	Foldable	63093-16	63093-11

# DISC-ROLLER CLASSIC (TRAILED)



5.00 m with V-Profile ring and material damper guard.



- “Sabre disc” 510 x 4 mm large scalloped disc with specially designed coulter profile – thus ensuring an improved cutting of surface stubble preparation.
- Maintenance-free disc-hubs.
- Working depth of up to 125 mm in minimal tillage cultivations.
- DSD – Technology: Depth Synchronised Disc-Aggressiveness.
- Available with 600 mm V-Profile rings where you have the most versatility implement with a high own weight. Good for stubble cultivations, seed bed preparations or land packing after ploughing.
- Available with 600 mm Wave roller that is good for carrying up the machine’s weight on light and loose soil.

## MACHINES

Model, m	Work Width, m	Roller Type	No. of Rings	No. of Discs	Power Req., HP	Weight, kg	Item Number
<b>1-SECTION, RIGID WITHOUT HYDRAULIC FOLDING</b>							
3.00	2.75	Square Tube Roller / 550 mm	<sup>1*</sup> -	22	100 +	2,248	63091-74
3.00	2.75	Wave roller / 600 mm	<sup>1*</sup> 24	22	100 +	2,360	63091-72
3.00	2.75	V-Profile Roller / 600 mm	<sup>1*</sup> 20	22	100 +	2,630	63091-64
3.50	3.25	Square Tube Roller / 550 mm	<sup>1*</sup> -	26	110 +	-	63096-74
3.50	3.25	Wave roller / 600 mm	<sup>1*</sup> 28	26	110 +	2,670	63096-72
3.50	3.25	V-Profile Roller / 600 mm	<sup>1*</sup> 23	26	110 +	2,945	63096-64
4.00	3.75	Square Tube Roller / 550 mm	<sup>1*</sup> -	30	120 +	-	63092-46
4.00	3.75	Wave roller / 600 mm	<sup>1*</sup> 32	30	120 +	2,990	63092-47
4.00	3.75	V-Profile Roller / 600 mm	<sup>1*</sup> 26	30	120 +	3,260	63092-48
<b>2-SECTION, WITH HYDRAULIC FOLDING</b>							
4.00	3.75	Square Tube Roller / 550 mm	<sup>2*</sup> -	30	120 +	-	63092-75
4.00	3.75	Wave roller / 600 mm	<sup>2*</sup> 32	30	120 +	3,320	63092-72
4.00	3.75	V-Profile Roller / 600 mm	<sup>2*</sup> 26	30	120 +	3,680	63092-65
5.00	4.75	Square Tube Roller / 550 mm	<sup>2*</sup> -	38	150 +	-	63093-75
5.00	4.75	Wave roller / 600 mm	<sup>2*</sup> 40	38	150 +	3,850	63093-72
5.00	4.75	V-Profile Roller / 600 mm	<sup>2*</sup> 32	38	150 +	4,300	63093-65

<sup>1\*</sup>Requires 2 double-acting oil outlets.

<sup>2\*</sup>Requires 3 double-acting oil outlets.

## STANDARD EQUIPMENT

- Hydr. adjustment of working depth.
- Adjustable drawbar height with parking device for hydraulic hoses.
- Edge equipment with disc for retain soil on right side.
- Scraper between the rings (V-Profile Roller and Wave Roller).
- 60 mm axles, fitted with 60 mm triple-sealed ball bearings on all models.
- Wheels:
  - 3.00-4.00 m 1-section: 11.5/80x 15.3 – 14 PLY.
  - 4.00-5.00 m 2-section: 400/60 x 15.5 – 16 PLY.
- Pivotal towing eye, secured by bolts: 3.00 – 5.00 m, item no.. 630757028.

## EXTRA EQUIPMENT

Work Width, m	Description	Weight, kg	Item Number
2.50 - 4.00	LED lights w/wire and socket, rigid models	3	63091-01
4.00 - 5.00	LED lights w/wire and socket, foldable models	3	63092-01
3.00 - 4.00	Hydr. adjustment of working depth and disc angle for rigid models	15	63093-93
3.00 - 4.00	Electrical depth stop for rigid models	4	63091-85
4.00 - 5.00	Electrical depth stop for hydraulic models	8	63092-85
3.00 - 5.00	Drawbar extension, 300 mm for bolting on	25	63091-95
3.00 - 5.00	Air brakes	18	63093-96
3.00 - 5.00	Hydraulic brakes, 1-circuit	7	63093-94
3.00 - 5.00	Hydraulic brakes, 2-circuit, <b>factory-mounted</b>	-	63093-95
3.00	Material damper guard	60	63091-98
3.50	Material damper guard	70	63096-98
4.00	Material damper guard	80	63092-98
5.00	Material damper guard	100	63093-98
3.00 - 3.50	Rubber sealed/non-lubricant ball bearings (Additional price per set)	16	63090-02
4.00 - 5.00	Rubber sealed/non-lubricant ball bearings (Additional price per set)	33	63090-04
-	Bearing protector for packing roller (Per unit)	1	7355054
-	Ø510 x 5 mm "Sabre discs" HD aggressive (Additional price per m)	8	63090-10

Work Width, m	Type / Description	Weight, kg	Item Number
<b>SPRING-BOARD</b>			
3.00	Rigid, 1-section 1 <sup>1</sup> / <sub>2</sub> *	280	63391-00
3.50	Rigid, 1-section 1 <sup>1</sup> / <sub>2</sub> *	325	63396-00
4.00	Rigid, 1-section 1 <sup>1</sup> / <sub>2</sub> *	375	63592-00
4.00	Foldable, 2-section 1 <sup>1</sup> / <sub>2</sub> *	375	63592-00
5.00	Foldable, 2-section 1 <sup>1</sup> / <sub>2</sub> *	450	63593-00
-	Edge equipment set for Spring-Board tines	11	63301-00
<b>SPRING-BOARD WITH SLICING PLATES</b>			
3.00	Rigid, 1-section 1 <sup>1</sup> / <sub>2</sub> *	-	63791-00
3.50	Rigid, 1-section 1 <sup>1</sup> / <sub>2</sub> *	-	63796-00
4.00	Rigid, 1-section 1 <sup>1</sup> / <sub>2</sub> *	-	63892-00
4.00	Foldable, 2-section 1 <sup>1</sup> / <sub>2</sub> *	-	63892-00
5.00	Foldable, 2-section 1 <sup>1</sup> / <sub>2</sub> *	435	63893-00
<b>TRANSVERSE LOCKING SYSTEM - CONNECTS THE SPRING-BOARD TINES</b>			
3.00	Rigid, 1-section 1*	35	63491-00
3.50	Rigid, 1-section 1*	41	63496-00
4.00	Rigid, 1-section 1*	51	63692-00
4.00	Foldable, 2-section 1*	51	63692-00
5.00	Foldable, 2-section 1*	55	63693-00



<sup>1</sup>Requires 1 additional double-acting oil outlet.

<sup>2</sup>Drawbar extension is recommended, when the tractor is equipped with twin wheels.

### SET OF PIVOTING SUPPORT WHEELS, MOUNTED IN FRONT, HEIGHT ADJUSTABLE WHEELS: 2 X 300/55X12- 8 PLY

Work Width, m	Description	Weight, kg	Item Number
3.00 - 5.00	For trailed models	140	63091-07
3.00 - 5.00	For trailed models with Spring-Board	180	63091-08



Work Width, m	Type	TOP-CUTTER		SPRING-BOARD ON TOP-CUTTER BRACKETS	
		Item Number	Item Number	Item Number	Item Number
2,50	Rigid	67410-80		67410-81	
3,00	Rigid	67410-82		67410-83	
3,50	Rigid	67410-84		67410-85	
4,00	Rigid	67410-86		67410-87	
4,00	Foldable	67410-88		67410-89	
5,00	Foldable	67410-90		67410-91	

### MOUNTING SET FOR MULTI-SEEDER INCL. STEPS, INCL. HYDRAULIC LIFTING OF SEED WHEEL AND MOUNTING ON NEW DISC-ROLLER - MAX. 300 KG LOAD IN THE FINE SEED HOPPER.

Work Width, m	Type	Item Number 8 Outlets	Item Number 12 Outlets	Item Number 16 Outlets
3.00	Rigid	63091-14	-	-
3.50	Rigid	63096-14	-	-
4.00	Rigid	63092-14	63092-27	-
4.00 - 5.00	Foldable	63092-18	63092-26	63092-19

### DISTRIBUTOR SET FOR HE-VA FRONT-TANK

Work Width, m	Description	Item Number
3.00 - 5.00	Distributor set with 12 outlets for HE-VA Front-Tank for Disc-Roller Classic	0537700