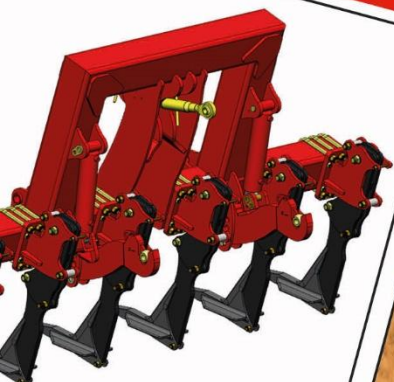


HE-VA

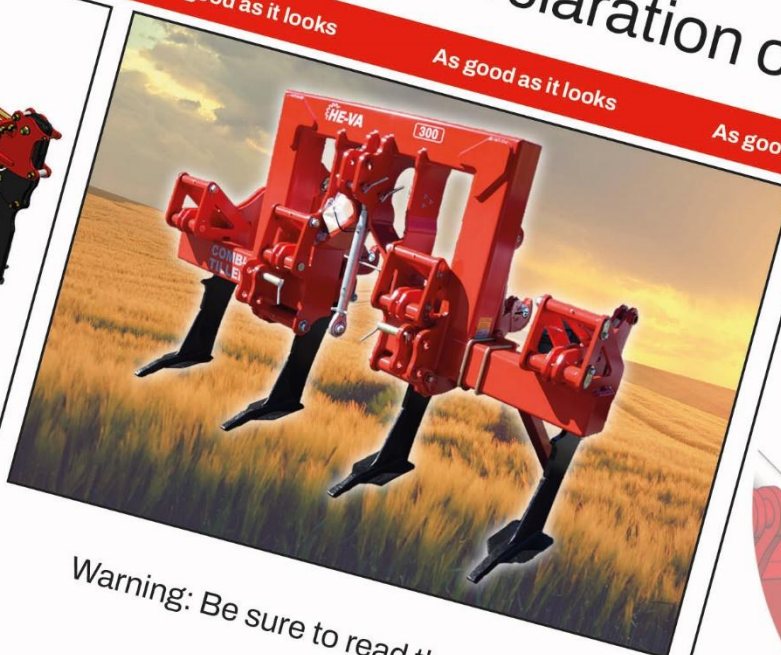
Operating Instructions
Spare Parts List
Declaration of Conformity

As good as it looks



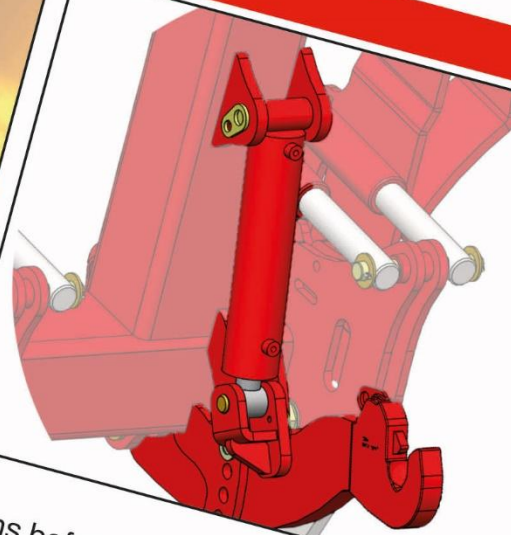
As good as it looks

As good as it looks



As good as it looks

As good as it looks



Warning: Be sure to read the operation instructions before using the machine.

Combi-Tiller PTO

Manual nr. 8000571 22-05-2026



N. A. Christensensvej 34
DK-7900 Nykøbing Mors
Tel: 97724288

www.he-va.com

Content

EC-DECLARATION OF CONFORMITY	3
Delivery check.....	4
Machine description	4
Technical specifications.....	4
Complaints	4
Safety instructions for Combi-Tiller	5
Safety and Instructions on Hydraulics	6
Instructions on transport on the public roads:	6
Front axle load:.....	6
Labels on the machine	7
Start-up of the machine	8
General information.....	8
Attachment und uncoupling :	8
Combi-Tiller PTO.....	8
Combi-Tiller PTO – combined with other machines	8
Setting and adjustment	9
Replacement of wearing point	9
Stone protection	9
Depth adjustment	10
Maintenance	10
Hydraulic automatic release system	11
Spare parts list.....	12
Frame with hydraulic lift arms	12
Tine setup (Shear bolt).....	14
Tine setup (Hydr. Auto.release).....	16
Hydraulics	18
Lift arms	18
Hydraulics for automatic release system	20
Ekstra equipment.....	22
LED Light kit.....	22
Notes.....	25
Notes.....	26
Notes.....	27



EC-DECLARATION OF CONFORMITY

in accordance with the EU Machinery Directive 2006/42/EC
applicable as from December 29th 2009:

HE-VA ApS
N. A. Christensensvej 34,
DK-7900 Nykøbing Mors

hereby confirms that the following machine has been manufactured in accordance with the Council
Directive 2006/42/EC.

The declaration comprises the following machine:

Combi-Tiller PTO 2,5 – 3,0 – 3,5 – 4,0 m. Shear bolt
Combi-Tiller PTO 2,5 – 3,0 – 3,5 – 4,0 m. Hydr. automatic release system

Nykøbing d. 26th January 2026

A handwritten signature in black ink, appearing to read 'Villy Christiansen', is written over a horizontal line.

Villy Christiansen

The undersigned is furthermore authorized to compile technical documentation for the above machi

Delivery check

Upon delivery to the dealer/supplier as well as to the customer, check the Combi-Tiller for possible damages

Machine description

Technical specifications

Model - Shear bolt	2,5 m	3,0 m	3,5 m	4,0 m
Working width	2,5 m	3,0 m	3,5 m	4,0 m
Power requirement, HP	100	100/150	150	150/200
No. of tines, Shear bolt	4	4/6	6	6/8
Weigh, kg, SHear bolt	560	620/690	760	820/890
Requirement for number of double acting oil outlets	1	1	1	1

Model – Hydr. Autom. Release system	2,5 m	3,0 m	3,5 m	4,0 m
Working width	2,5 m	3,0 m	3,5 m	4,0 m
Power requirement, HP	100	100/150	150	150/200
No. of tines, Hydr. Autom. Release system	4	4/6	6	6/8
Weigh, kg, Hydr. Autom. Realese system	690	750/820	930	990/1080
Requirement for number of double acting oil outlets	2	2	2	2

Combi-Tiller complies with DS/ISO 11001-1, three-point suspension.

Complaints

Complaints are performed in the dealer's workshop within the standard hours. If this is impossible you have to pay for the overtime. Machines for complaint work are to be delivered in cleaned condition.

Safety instructions for Combi-Tiller PTO

Do not start-up the machine if there are persons in exposed positions* within a hazardous area**.

When persons are in exposed positions (e.g. in connection with adjustment, maintenance, attachment and uncoupling), the following conditions must be observed:

The machine must be lowered to firm ground.

The hydraulics must be relieved.

The tractor must be stopped and the key removed from the ignition switch.

The driver must ensure that no persons are staying in exposed positions during the operation.

* Person in exposed position: Any person who is staying wholly or partly within a hazardous area.

** Hazardous area: On and under the machine within a distance of 4 m from the machine.

Most accidents that happen in connection with the operation, transport and maintenance of machines are caused by non-compliance with the most elementary safety conditions.

Therefore it is vital that anybody working at the machine carefully complies with the safety instructions as well as other instructions applying to the machine.

The machine may only be operated, maintained and repaired by persons, who are familiar with this work and who are further familiar with the possible elements of danger with this particular machine.

ATTENTION!!

Rotary parts and loose clothes are a dangerous combination.

IMPORTANT!!

In connection with the risk of parts falling down, it may endanger the lives of persons staying on the base frame of the machine, when it is operated attached to a tractor.

Safety and Instructions on Hydraulics

The maximum working pressure is 225 bar.

It is advisable to label the attachment parts at hydraulic connections between the tractor and the tool in order to eliminate incorrect operation!

When checking for hydraulic leaks, use suitable safety wear (eye protectors, gloves, etc.)
High-pressure hydraulic oil may penetrate the skin and cause dangerous injuries.
In case of injury, consult a doctor immediately. **RISK OF INFECTION!**

Before operating the hydraulics, lower the machine to firm ground.
Relieve the hydraulics, stop the motor and remove the ignition key.

Check the hydraulic hoses on a regular basis, however, every six months as a minimum due to any cracks, wear and tear, etc. Replace any defective hoses immediately.

The life of hydraulic hoses is maximum 5 years.

New hydraulic hoses must meet the manufacturer's requirements.

Instructions on transport on the public roads:

Check before transport on public roads that the attachment of the machine at the tractor is in accordance with the local rules and regulations in force (permitted total weight, permitted axle load, transport width, lights, warning signs, etc.).

Front axle load:

After the attachment of the machine and at maximum load, the driving properties of the tractor must be ensured. Check that the front axle is sufficiently loaded. As a minimum, the front axle load must be 20% of the tractor weight. Permitted axle load and permitted total weight for the tractor must always be observed.

NB! The driving, controlling and braking properties are affected by the attached machine combination.

Labels on the machine

You will find several labels on your machine containing **safety** and practical instructions as regards the correct application of the machine.

Please study the instructions and point out to the user the importance of the labels as well as the **safety instructions** in the Operating Instructions. Always keep the labels clean and readable – if not they must be replaced.

Explanation of the Machine Labels



Study the Operating Instructions thoroughly before any operation of the machine and observe all safety instructions.

Item number: 1305028



Plate with number and year of manufacture.



Tighten up the bolts regularly. If this is not performed, our warranty obligations will no longer apply.

Item number: 1305030

Maximum torque in Nm. w/lubricated thread			
Metric thread	Quality 8.8	Quality 10.9	Quality 12.9
M10x1,5	47	65	79
M12x1,75	81	114	136
M14x2,0	128	181	217
M16x2,0	197	277	333
M18x2,5	275	386	463
M20x2,5	385	541	649
M22x2,5	518	728	874
M24x3,0	665	935	1120
Wheel nut M18x1,5 fine thread		385 Nm	
Wheel nut M22x1,5 fine thread		550 Nm	

Start-up of the machine

General information

The machine requires 1 double acting outlet (Shear bolts).

The machine requires 2 double acting outlets (hydr. Autom. release system).

Attachment und uncoupling :

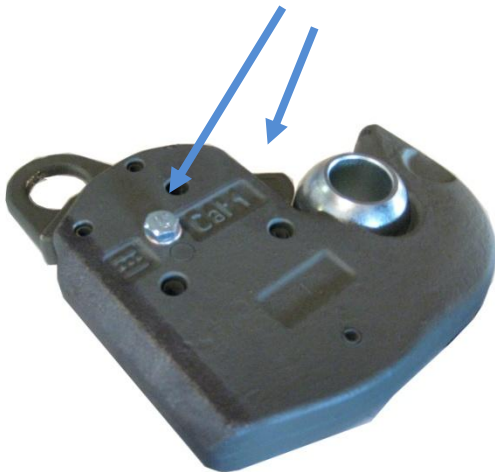
1. Under normal conditions, the tractor is connected to the machine's lower lift holes for both the lift arms and the top link.

Combi-Tiller PTO

1. Reverse the tractor to the implement and it is mounted in the three-point suspension of the tractor.
2. Adjust the working depth.

Combi-Tiller PTO – combined with other machines

1. Reverse the tractor to the implement.
2. Mount all the hydraulic hoses in the tractor outlet
3. Now pressurize the drawbar and wheel cylinder, so that the drawbar is adapted to the tractor draw height.
4. Now reverse the tractor to the implement and attach.
5. The machine is to be raised to max. height.
6. Now the foldable models can be unfolded.



Quick Coupling LOCKED

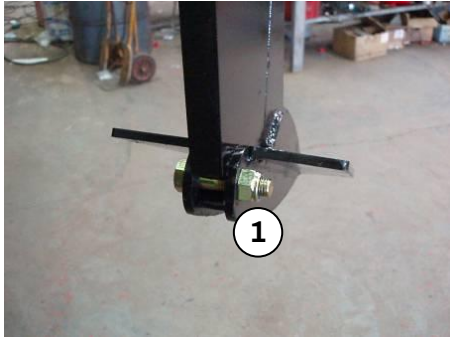


Quick Coupling UNLOCKED

When operating the quick coupling must be locked, using bolts, to prevent damage to the equipment

Setting and adjustment

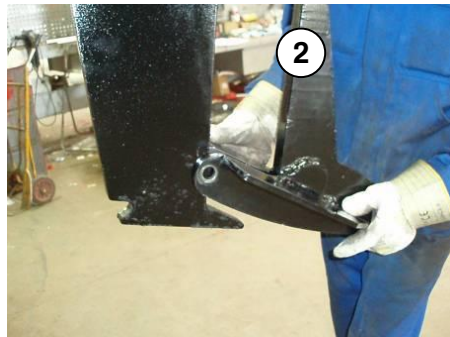
Replacement of wearing point



1. ⚠ Before working with the machine's wearing points, the machine is to be fastened. This can be performed by trestles under the main frame or by a support of the roller.

2. Dismount M16x65 mm bolt (Pos. 1) by means of 2 pcs. 24 mm spanners. ⚠ The wearing point might fall off, when the bolt is removed – take care of foot and leg injuries.

3. Dismount the wearing point by pushing it forward. This might be difficult due to entrance of soil, and it might be a good idea to use a hammer.



4. Mount the new wearing point, item no. 645000044 (Pos. 2), by pushing the wearing point to the rear and then in its place.

5. Check the M16 x 65 mm bolt for eventual damages and replace it as required, item no. 0235852+0272290+0264090

6. Mount the M16 x 65 mm bolt (Pos. 1), lubricate and tighten it with **approx.20 Nm**. **Be carefull not to overtighten – the wearing point can be damaged**

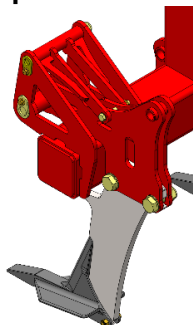
Stone protection

If a tine hits a big stone or similar in the soil, the shear bolt is to break in order to avoid damages on the machine's construction and the tractor.

When a shear bolt breaks, the tine will move backwards.

- Before the machine is operating hereafter, check that the tine has free mobility backwards without hitting an eventual connected machine. This is being performed by moving the shear bolt and then check the movement of the tine.

Replacement of the shear bolt

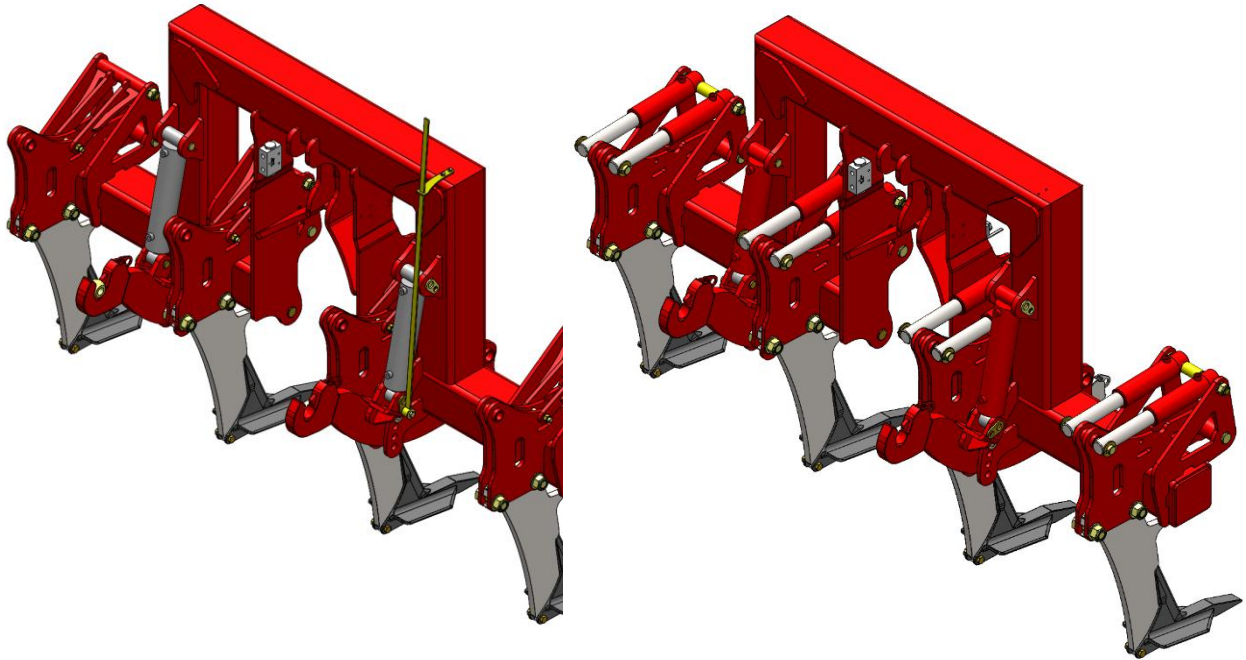


1. The machine is lifted so that the tine can move.
2. Remove the scraps from the old shear bolt.
3. Push the tine forwards and mount the new shear bolt behind the tine.
4. Tighten the bolt with 100 Nm, and the machine is ready for use.

It is important to use original **HE-VA** shear bolts
Item no. 1235095, otherwise the machine might be
Damaged and the guarantee/complaint will no longer
Be valid



Depth adjustment



Combi-Tiller can operate in max. 400 mm depth. The working depth is adjusted by means of the hydraulic lift arms. The working depth is controlled using the scale.

The Combi-Tiller PTO can be used solo or acts as a draw unit for a trailed machine. The working depth can be varied with the tractor's lift.

Maintenance

After 10 hours of operation, retighten the machine. Check hydraulic hoses, fittings and cylinders for leaks and retighten.

Further check on a regular basis that all bolts are tightened.

Before the winter storage, wash and lubricate the machine. If you use high-pressure cleaner, do not spray directly on the ball bearings. After the washing, you may spray the machine with oil.

Lubrication

For lubrication, maintenance and repair, lower the Sub-Tiller, put the brakes of the tractor on and stop the motor.

The Combi-Tiller PTO must be lubricated after 30 hours of operation and after cleaning in order to expel any water and dirt. The lubrication points on the rigid machines are located at the movable lift and also at the cylinders.

In addition, machines equipped with a hydraulic automatic release have 2 lubrication points per tine, which must be lubricated after 10 hours of operation.

Important!

Oil, type Hydro Texaco HD32 has been filled in the hydraulic system.
--

Hydraulic automatic release system



Before each season it has to be controlled, that the gas pressure in the accumulator (Pos.1) is 110 bars. ⚠ This requires special tools and can only be performed by an authorized dealer.

Before the start-up of the machine the hydraulic pressure in the closed hydraulic stone protection system has to be controlled on the machine's pressure gauge (Pos. 2). The pressure has to be **minimum 120 bar** and must be kept in a working range up to 160 bar. The hydraulic pressure must never exceed 180 bar.

IMPORTANT – the hydraulic pressure is to be controlled continuously and must never be under 120 bar.

If there is a need to adjust the working pressure, follow the below instructions:

Mount the quick coupling of the hydraulic hose (Pos. 3) in the tractor's oil outlet.

Turn on the ball valve (Pos. 4), and the working pressure can now be adjusted up or down with the tractor's oil outlet.

When the desired pressure is achieved, turn off the ball valve again (Pos. 4), and the tractor's hydraulic system is relieved before the quick coupling (Pos. 3) is dismantled and placed in the parking device of the machine.

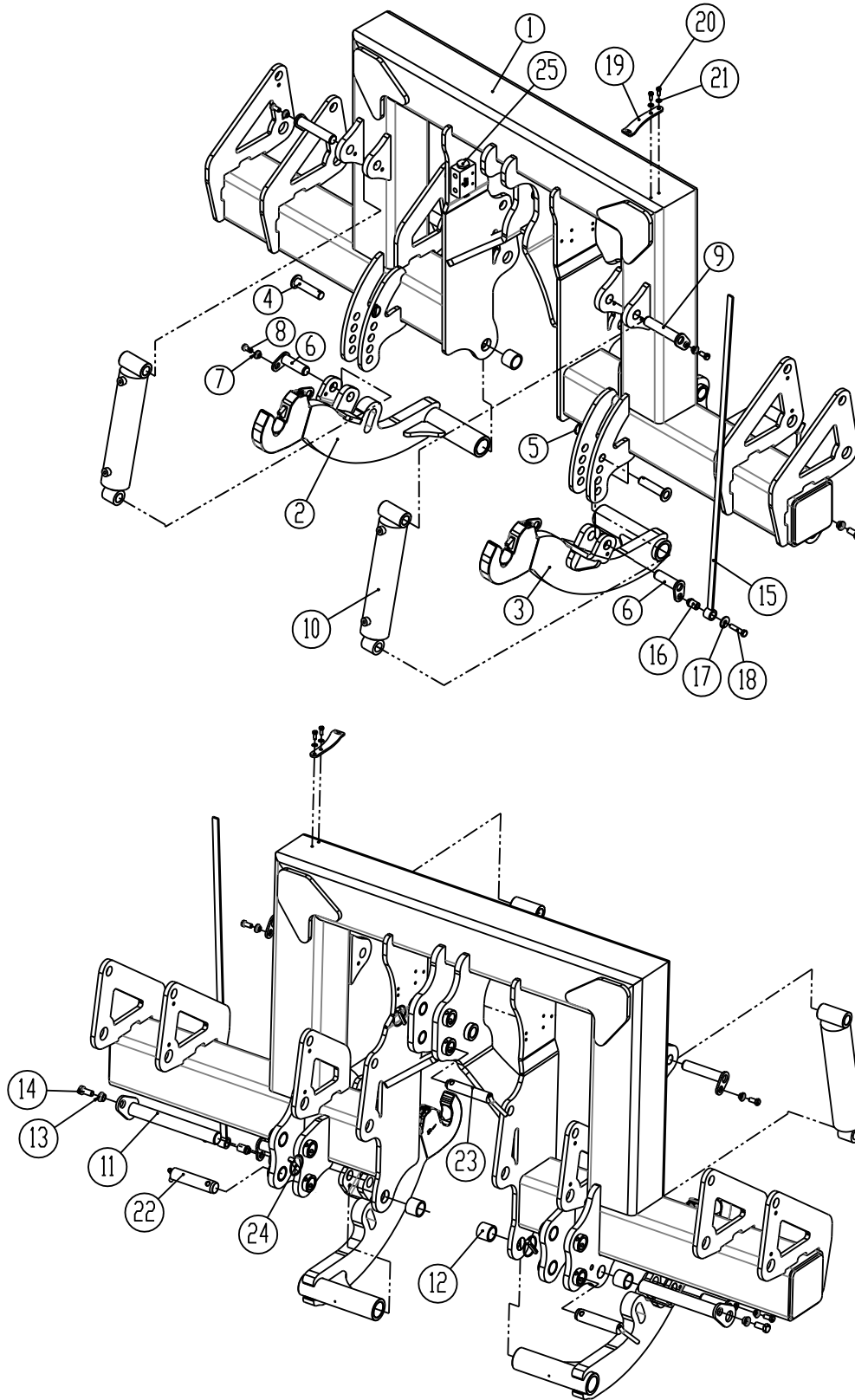
During the operation of the machine the tine is swinging automatically to the rear if it meets an obstacle. In normal circumstances the tine will automatically return to the working position again after having passed the obstacle. At extreme obstacles and/or soil conditions it might be necessary to stop and eventually lift the machine from the soil.

⚠ **It is important that no persons are near to the machine as the tine is returning to the working position with high speed and might throw with soil and stones.**

Spare parts list

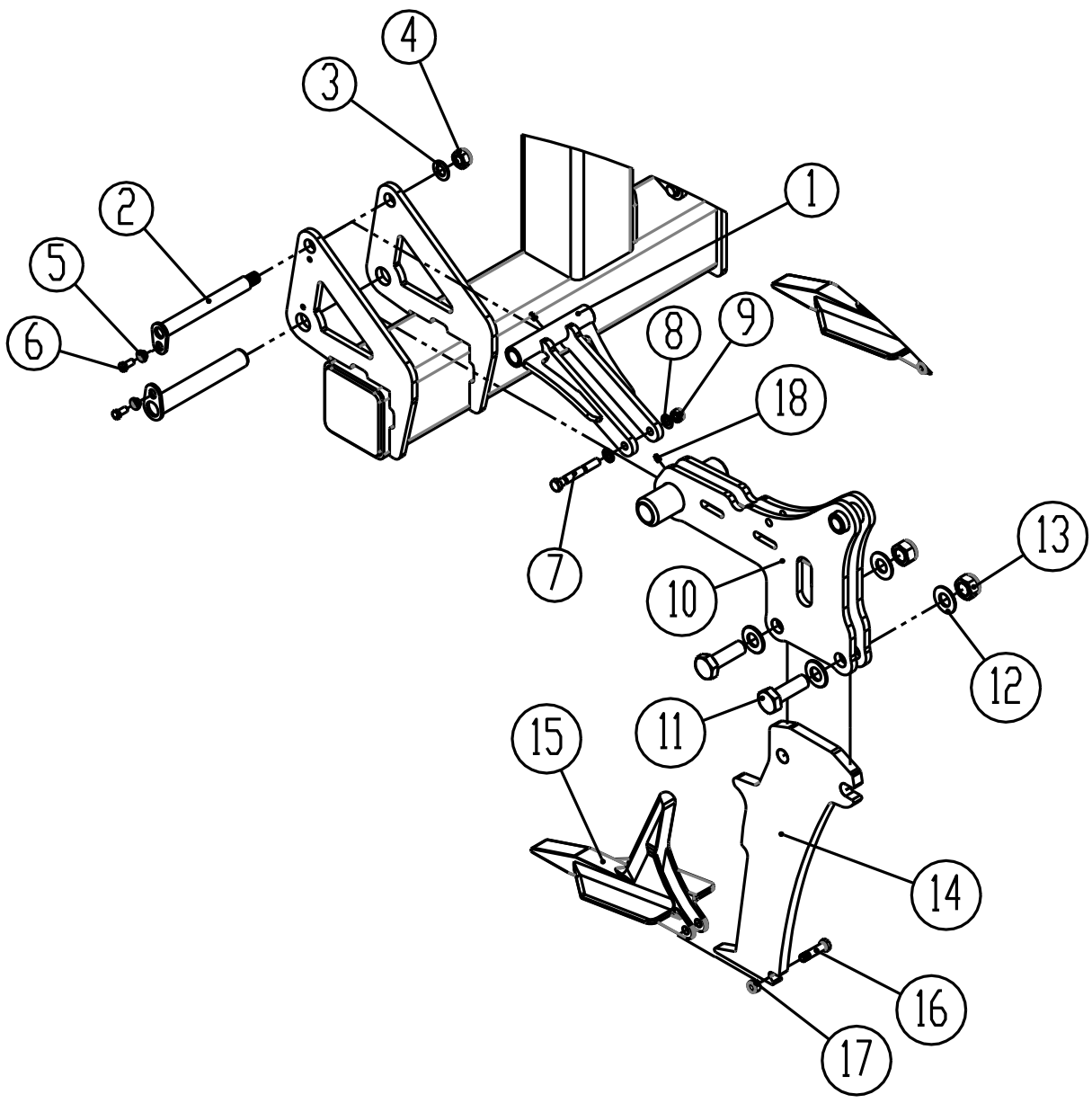
Frame with hydraulic lift arms

Shown frame with 4 tines.



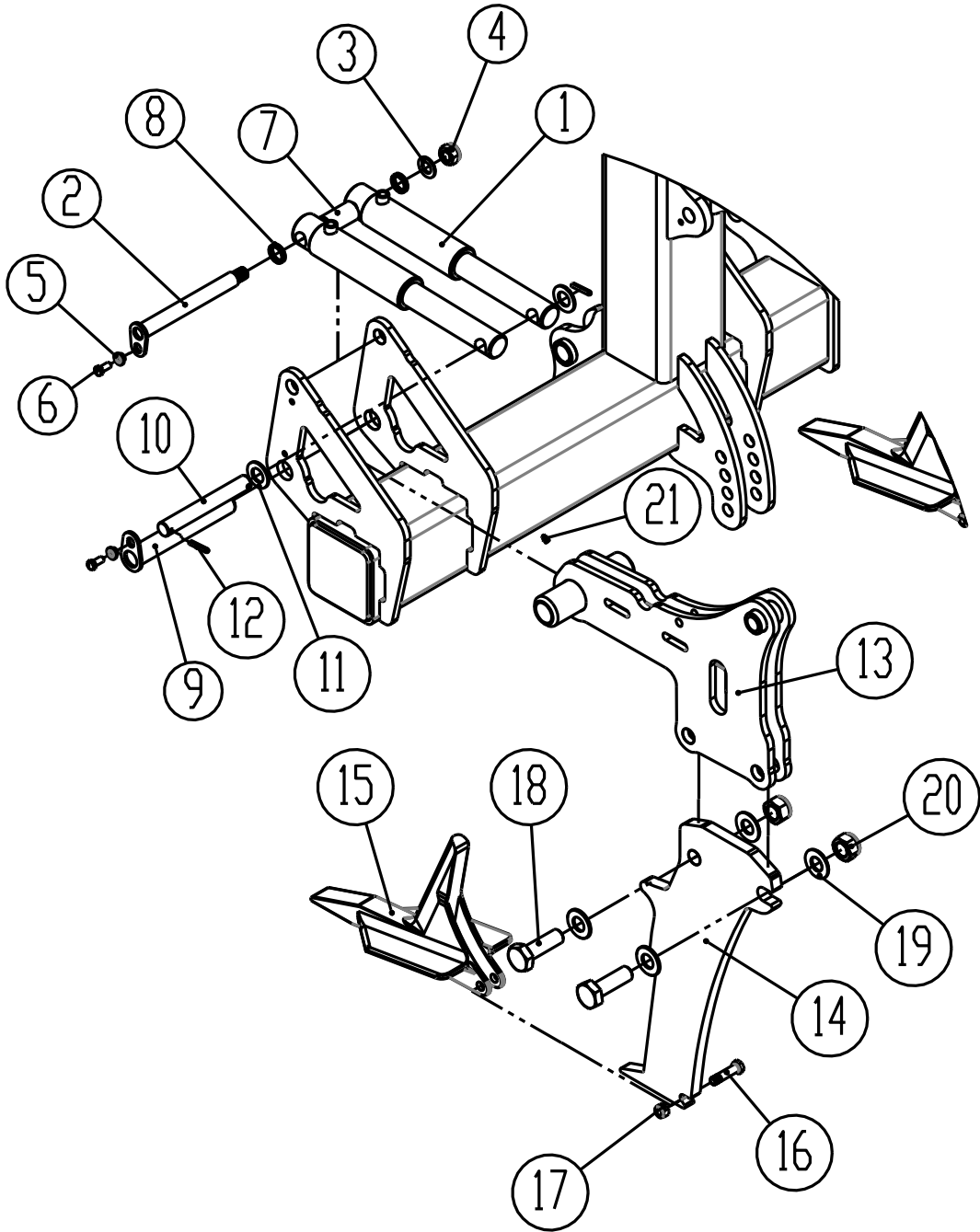
Pos.	Item no.	Designation	2,5m	3,0m	3,5m	4,0m
1	1235912	Frame with 4 tænder	1			
1	1235834	Frame with 4 tænder		1		
1	1235898	Frame with 6 tænder		1		
1	1235881	Frame with 6 tænder			1	
1	1235269	Frame with 6 tænder				1
1	1235878	Frame with 8 tænder				1
2	1235839	Lift arm (f/Shear bolts) (L)	1	1	1	1
3	1235826	Lift arm (f/Shear bolts) (R)	1	1	1	1
2	1235885	Lift arm (f/Hydr. Auto.release system) (L)	1	1	1	1
3	1235883	Lift arm (f/Hydr. Auto.release system) (R)	1	1	1	1
4	69525095F	Pin Ø25 L=95	2	2	2	2
5	0378200	Ring pin Ø4,5	2	2	2	2
6	69430095G	Pin Ø30 L=95	2	2	2	2
7	630532600	Lock bush for pin head	3	3	3	3
8	690101101	Bolt M12x25 8.8	3	3	3	3
9	69430145G	Pin Ø30 L=145	2	2	2	2
10	690200200	Cylinder 80x40x280	2	2	2	2
10a	690200143	Gasket set 80/40 mm. (Laizhou)	2	2	2	2
11	69440320N	Pin Ø40 L= 320	2	2	2	2
12	0475330	I-Press bushing EG ø50/40x40mm	4	4	4	4
13	630532700	Lock bush for pin head	2	2	2	2
14	690103124	Bolt M16x35 8.8	2	2	2	2
15	1235907	Indicator for scale to liftarms	1	1	1	1
16	1235908	Bushing for indicator	1	1	1	1
17	0272620	Disc ø 13,0x ø37x3,0 DIN9021	1	1	1	1
18	0235390	Bolt M12x55mm, 8.8 fzb	1	1	1	1
19	1235909	Bracket for indicator rod	1	1	1	1
20	0234750	Bolt M8x20 8.8	2	2	2	2
21	0272250	Facet plate Ø8mm, fzb	2	2	2	2
22	1140600	Pin Ø37 L=129 (Pin for lift arm CAT.III)	2	2	2	2
23	69532129B	Pin Ø32 L=129 (Pin for top link KATIII)	1	1	1	1
24	690134008	Ring pin, Ø11,5mm Ø60 ring	3	3	3	3
25	0442775	Flowdivider 3/8" 10-20 l/min	1	1	1	1
25a	0272240	Facet disc 6mm	4	4	4	4
25b	0234580	Bolt M6x70 8.8	2	2	2	2
25c	0264040	Self locking nut M6	2	2	2	2
26	690302005	Top link Cat.III - 36x3 (570-790 mm)	1	1	1	1

Tine setup (Shear bolt)



Pos.	Item no.	Designation	2,5m	3,0m	3,5m	4,0m
1	1235092	Adapter for shear bolt	4	4/6	6	6/8
2	645100288	Pin Ø30 L=262 w. M24 thread	4	4/6	6	6/8
3	0272330	Facet disc Ø24	4	4/6	6	6/8
4	0264130	Self locking nut M24	4	4/6	6	6/8
5	630532600	Lock bush for pin head	8	8/12	12	12/16
6	690101101	Bolt Ø12x25mm 8.8	8	8/12	12	12/16
7	1235095	Shear bolt M16x120mm	4	4/6	6	6/8
8	0272290	Facet disc Ø16	16	16/24	24	24/32
9	0264090	Self locking nut M16	4	4/6	6	6/8
10	645100330	Tine bracket (cpl)	4	4/6	6	6/8
11	690103868	Bolt M30x95mm 10,9	8	8/12	12	12/16
12	0272350	Facet disc Ø30	16	16/24	24	24/32
13	0264155	Self locking nut M30	8	8/12	12	12/16
14	645100196	Leg, Combi Disc	4	4/6	6	6/8
15	645000044	Wear point 200mm MOLDED w/wings	4	4/6	6	6/8
16	0235852	Bolt M16x65mm 8.8	4	4/6	6	6/8
17	0264090	Self locking nut M16	4	4/6	6	6/8
18	0432510	Lubricating nipple, M8	8	8/12	12	12/16

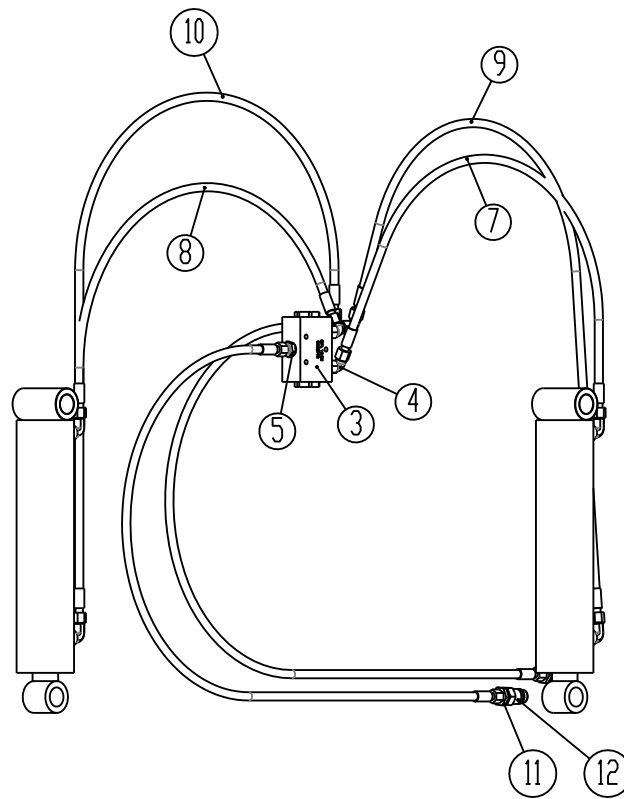
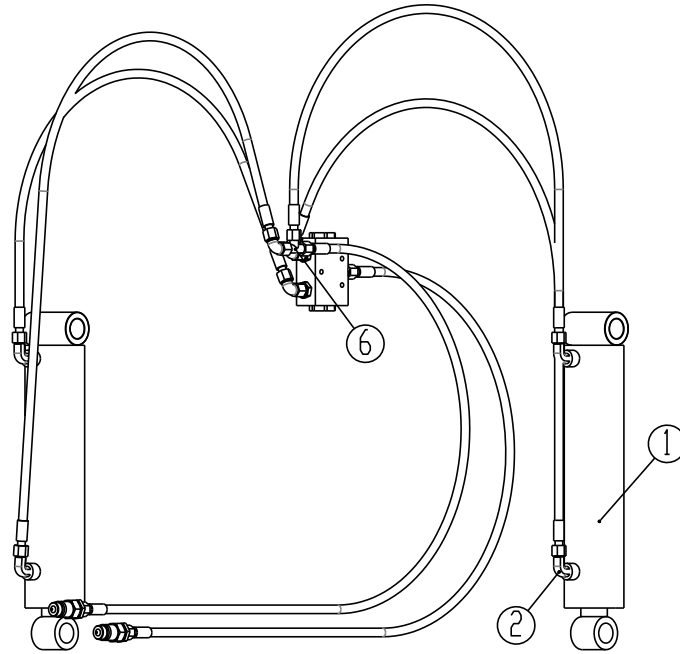
Tine setup (Hydr. Auto.release)



Pos.	Item no.	Designation	2,5m	3,0m	3,5m	4,0m
1	690200344	Cylinder Ø60/50-155mm	8	8/12	12	12/16
1a	690200352	Gasket set 60/50mm	8	8/12	12	12/16
2	645100288	Pin Ø30 L=262 w. M24 thread	4	4/6	6	6/8
3	0272330	Facet disc Ø24	4	4/6	6	6/8
4	0264130	Self locking nut M24	4	4/6	6	6/8
5	630532600	Lock bush for pin head	8	8/12	12	12/16
6	690101101	Bolt Ø12x25 mm 8.8	8	8/12	12	12/16
7	645100312	Distance bush, hydr.cyl f automatic release system	4	4/6	6	6/8
8	645100403	Distance bush Ø40x4 L=8mm	8	8/12	12	12/16
9	645100290	Pin Ø40 L= 265mm	8	8/12	12	12/16
10	645100339	Pin Ø30 L=230mm	4	4/6	6	6/8
11	690115014	Facet disc Ø30	8	8/12	12	12/16
12	0371700	Spring pin ø8x50mm, fzb DIN1481	8	8/12	12	12/16
13	645100330	Tine bracket (cpl)- for hydr.cylinder	4	4/6	6	6/8
14	645100196	Leg, Combi Disc	4	4/6	6	6/8
15	645000044	Wear point 200mm MOLDED w/wings	4	4/6	6	6/8
16	0235852	Bolt M16x65mm 8.8	4	4/6	6	6/8
17	0264090	Self locking nut M16	4	4/6	6	6/8
18	690103868	Bolt M30x95 10,9	8	8/12	12	12/16
19	0272350	Facet disc Ø30	16	16/24	24	24/32
20	0264155	Self locking nut M30	8	8/12	12	12/16
21	0432510	Lubricating nipple, M8	4	4/6	6	6/8

Hydraulics

Lift arms

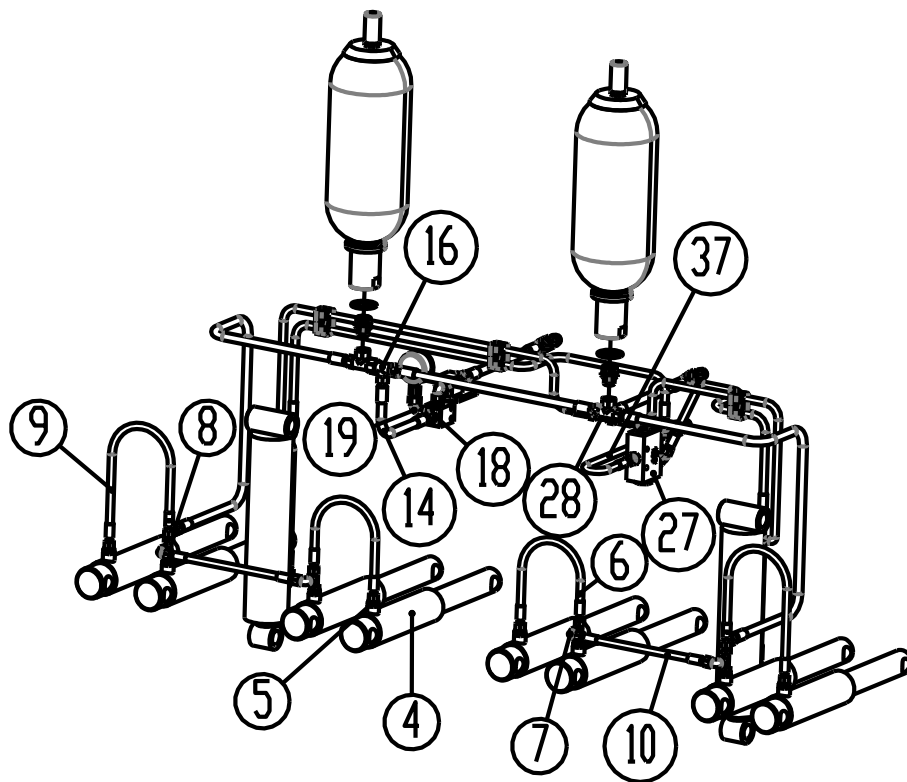
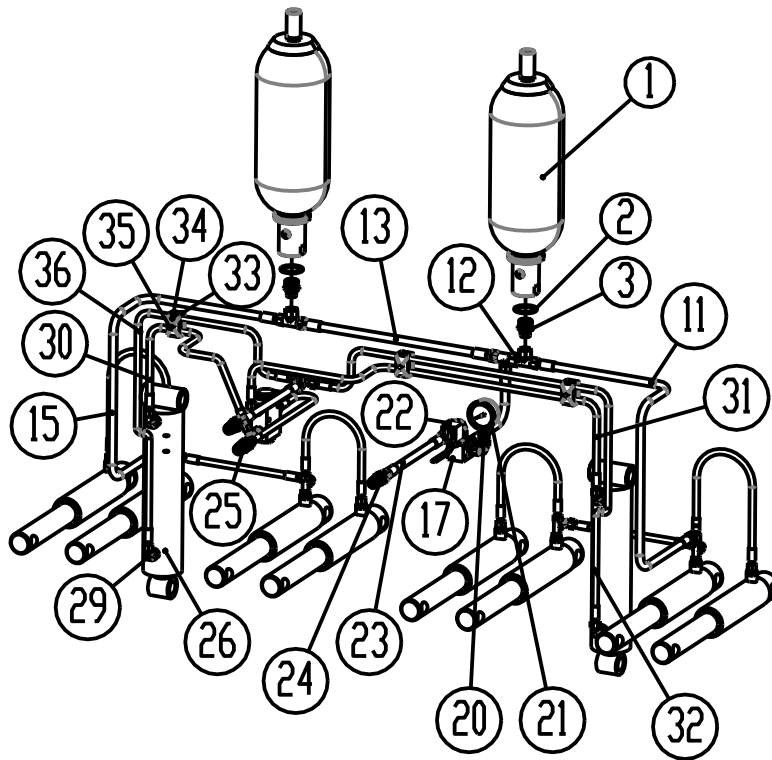


Pos.	Item no.	Designation	2,5m	3,0m	3,5m	4,0m
1	690200200	Cylinder 80x40x280	2	2	2	2
1a	690200143	Gasket set 80/40 mm	2	2	2	2
2	690203006	Fitting, angle 10-3/8" BSP	4	4	4	4
3	0442775	Flow divider 3/8" 50x50 10-20	1	1	1	1
4	0446678	Fitting angle 10 mm	3	3	3	3
5	690202931	Fitting, straight M16x1,5 Ø10/1/4" hose	3	3	3	3
6	0446510	T-nippel 1/4", galv.	1	1	1	1
7	0454244	Hydr.hose 3/8" x 935 mm st/st	1	1	1	1
8	0454360	Hydr.hose 3/8" x 1260mm st/st	1	1	1	1
9	690201018	Hydr.hose 1480mm 1/4" st/st	1	1	1	1
10	0454497	Hydr.hose 3/8" x 1580mm st/st	3	3	3	3
11	0446752	Fitting ø10 x1/2" BSP	2	2	2	2
12	0444020	Quick coupling Male 1/2"	2	2	2	2

Attention:

The number of hoses and hose lengths and size can vary – dependent on the machine type, therefore check measurements, sizes and number before ordering the spare parts.

Hydraulics for automatic release system



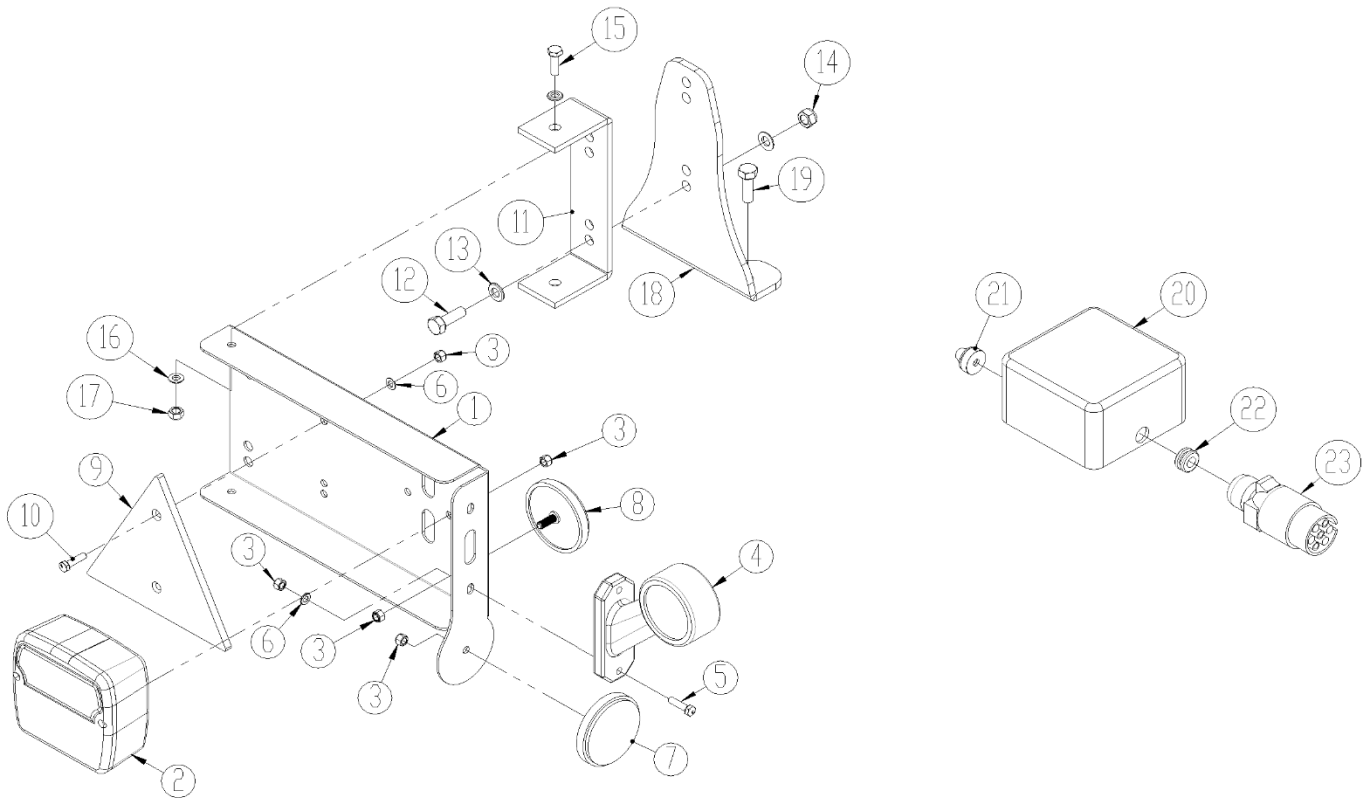
Pos.	Item no.	Designation	2,5m	3,0m	3,5m	4,0m
1	690206515	Accumulator 6,0L 110 bar,	2	2	2	2
2	0449110	Bounded seal 1 1/4"	2	2	2	2
3	0446720	Fitting M22x1,5 x 3/4"	2	2	2	2
4	690200344	Cylinder Ø60/50-155mm	8	8/12	12	12/16
5	690200931	Fitting, Straight M16x1,5	8	8/12	12	12/16
6	690201207	Hydr.hose 400mm 3/8" st/st	2	2/4	4	4/6
7	0446678	Fitting angle 10 mm	4	4/6	6	6/8
8	690203125	Fitting T12	6	6/8	8	8/10
9	690201207	Hydr.hose 400mm 3/8" st/st	2	2/4	4	4/6
10	690201449	Hydr.hose 850 mm ½" st/st	2	2/4	4	4/6
11	690201445	Hydr.hose 1150 mm ½" st/st	1	1	1	1
12	690204505	Fitting T15	2	2	2	2
13	690201445	Hydr.hose 1150 mm ½" st/st	1	1	1	1
14	690201220	Hydr.hose 600mm 3/8" st/st	1	1	1	1
15	690201445	Hydr.hose 1150 mm ½" st/st	1	1	1	1
16	0446500	Fitting T15	1	1	1	1
17	660501410	Aluminium block 40x40x54,2-2xØ8,5	1	1	1	1
18	690202932	Fitting, straight M16x1,5 Ø12 / 3/8" hose	4	4	4	4
19	690203016	Fitting angle 10mm	2	2	2	2
20	690206825	Pressure gauge fitting Ø12 / 1/4"	1	1	1	1
21	690206802	Pressure gauge G63 - D250B	1	1	1	1
22	690202990	Ball valve 3/8"	1	1	1	1
23	0454360	Hydr.hose 3/8" x 1260mm st/st	1	1	1	1
24	0444490	Fitting 3/8"-1/2"	1	1	1	1
25	0444020	Quick coupling ½" Male	1	1	1	1
26	690200200	Cylinder 80x40x280	2	2	2	2
26a	690200143	Gasket set 80/40 mm.	2	2	2	2
27	0442775	Flow divider 3/8" 10-20 l/min	1	1	1	1
28	0446510	Fitting ¼"	1	1	1	1
29	690203006	Fitting, angel, 10-3/8" BSP	4	4	4	4
30	690201220	Hydr.hose 600mm 3/8" st/st	1	1	1	1
31	690201445	Hydr.hose 1150 mm ½" st/st	1	1	1	1
32	690201445	Hydr.hose 1150 mm ½" st/st	1	1	1	1
33	690210210	Double tube-support Ø14-14mm, green	6	6	6	6
34	690210211	Top plate f/double tube-support	3	3	3	3
35	690210213	Steel bolt M8x40	3	3	3	3
36	690201445	Hydr.hose 1150 mm ½" st/st	1	1	1	1
37	0454360	Hydr.hose 3/8" x 1260mm st/st	1	1	1	1

Attention:

The number of hoses and hose lengths can vary – dependent on the machine type, therefore check measurements and number before ordering the spare parts.

Ekstra equipment

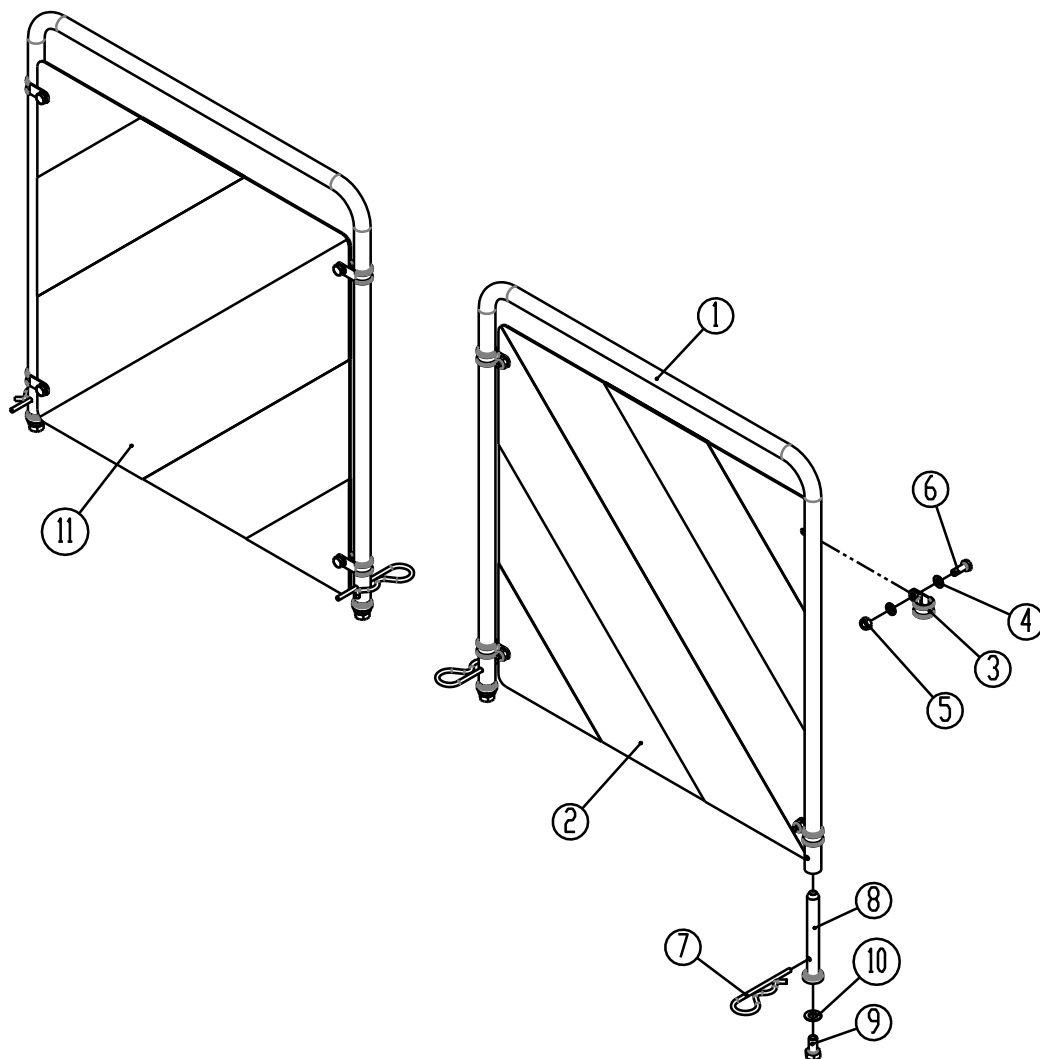
LED Light kit



Pos.	Item no.	Designation	Qty.
1	7357505	Lightbox (L)	1
	7357508	Lightbox (R)	1
2	7357504	Rear light	2
3	0264030	Locking nut M5	16
4	7357507	Marking lights (L)	1
	7357509	Marking lights (R)	1
5	0233860	Bolt M5x20	4
6	0272230	Facet disc Ø5	16
7	0656240	Reflex, yellow	2
8	0656250	Reflex, white	2
9	0521030	Reflex, red	2
10	0233860	Bolt M5x20	16
11	7357516	Bracket	2
12	0234760	Bolt M8x25	2
13	0272250	Facet disc Ø8	4
14	0264050	Locking nut M8 M8	2
15	0234330	Bolt M6x20	2
16	0272240	Facet disc Ø6	4
17	0264040	Locking nut M8 M6	4
18	30910110	Console f. light box	2
19	0230825	Screw Tapetite M8x25 DIN 7500	2
20	0520492	Junction box 105x105x60	1
21	7357545	Rutaseal nippel M20 8-12mm	2
22	7357546	Rubberbushing Nr. 38A Ø10/3 black	1
23	0527140	Plug 7 poles DIN 72 577 – ISO 1724	1
	690160080	Cable 5x1mm ²	

Attention:

Check number and measurements of all cables before ordering the spare parts.

Reflective warning signs

Pos.	Item no.	Designation	Qty.
1	690160073	Tube for warning sign Ø16	2
2	690160071	Warning sign 423x423 double	2
3	690160072	ABA Rubber clamps 15,9	8
4	0272240	Facet disc Ø6	16
5	0264040	Self-locking nut M6	8
6	690103029	Bolt M6x25	8
7	0377400	Hairpin Ø4	4
8	7357599	Flanged pin	4
9	0234740	Bolt M8x16	4
10	0272250	Facet disc Ø8	4
11	7357642	Warning sign cpl.	2

Notes

Notes

Notes

GOOD AS IT LOOKS!

AS GOOD AS IT LOOKS!

AS GOOD AS IT LOOKS!

AS GOOD AS IT LOOKS!

AS GOOD AS



The design is subject to modification without notice.