

UK



# HE-VA

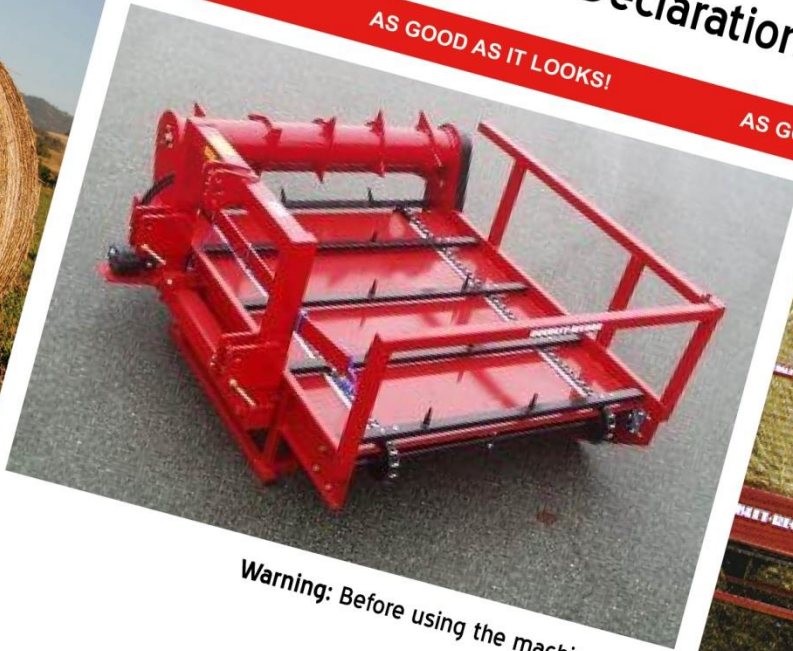
AS GOOD AS IT LOOKS!

AS GOOD AS IT LOOKS!

AS GOOD AS IT LOOKS!

AS GOOD AS IT LOOKS!

AS GOOD AS IT LOOKS!



Warning: Before using the machine it is important to read the operating instructions.



N. A. Christensensvej 34  
DK-7900 Nykøbing Mors  
Tel: 97724288  
Fax: 97722112  
[www.he-va.com](http://www.he-va.com)

Rondo-Dan



## Contents

<b>Declaration of Conformity .....</b>	<b>4</b>
<b>Delivery check .....</b>	<b>5</b>
<b>Machine Description.....</b>	<b>5</b>
Range of Application.....	5
Technical specifications.....	5
<b>Responsibility of the user .....</b>	<b>6</b>
<b>Safety instructions for Rondo-Dan.....</b>	<b>6</b>
<b>Starting up .....</b>	<b>7</b>
<b>Spare Parts List.....</b>	<b>8</b>
Frame .....	8
Carrying-out.....	10
Carrying-out motor .....	12
<b>Hydraulic.....</b>	<b>14</b>
Oil motor.....	14

DS/EN 45 014

## **Declaration of Conformity**

HE-VA ApS  
N. A. Christensensvej 34,  
DK-7900 Nykøbing Mors

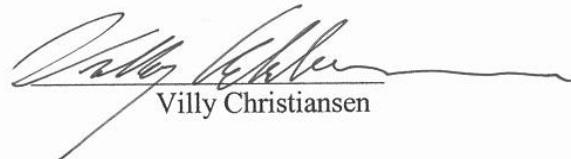
declares under sole responsibility that the product:

**Rondo-Dan**

No : \_\_\_\_\_

to which this declaration relates,  
is in conformity with the provisions of

98/37/EF (Machinery) Directive with later amendments.

A handwritten signature in black ink, appearing to read "Villy Christiansen", written over a horizontal line. The signature is fluid and cursive.

Villy Christiansen

Nykøbing Mors, July 2 2010

## **Delivery check**

Upon delivery to the dealer/supplier as well as to the customer, check the Rondo-Dan for possible damages.

## **Machine Description**

### **Range of Application.**

This Rondo-Dan unwinder can be used for unwinding and feeding out round bales of hay and straw.

This book must be read before the machine is used, and the book must follow your Rondo-Dan through its life.

The factory reserves the right to changes.

### **Technical specifications.**

	<b>Left</b>	<b>Right</b>
Working width	2.15 m.	2.15 m.
Length	2.0m.	2.0m.
Weight	577 kg.	577 kg.
Lifting required	1100 kg.	1100 kg.
Max. weight of bale	650 kg.	650 kg.
Max. bale diameter	1.80 m.	1.80 m.
Max. bale width	1.50 m.	1.50 m.

## **Responsibility of the user**

The user is responsible that the operator has the needed competence. Since HE-VA cannot control the use of the unwinder, we can only guarantee the quality of the machine, and cannot accept any kind of claims for compensation in connection with the work of the machine.

Any kind of injury caused by staying in dangerous areas will always be the responsibility of the user.

The user is responsible that the machine is legal during transport on public roads. Please pay attention to: lights, weight, transport width, disposition of weight on the tractor (extra front weight might be necessary).

The user is responsible for frequent control and tightening of all bolts and nut.

## **Safety instructions for Rondo-Dan**

The machine must not be started if exposed persons\*\* are inside a dangerous area\*.

When persons are in dangerous areas (by e.g. adjustment, maintenance, connecting and disconnecting) following points must be fulfilled:

1. The machine must be lowered to solid foundation.
2. The hydraulic must be relieved.
3. The tractor must be stopped and the key must be removed from the ignition.

The operator must ensure, that during work no exposed persons are inside a dangerous area.

\* Dangerous area: Every area on the machine and within a distance of 3m. from the machine.

\*\* Exposed person: All persons who are in a dangerous area.

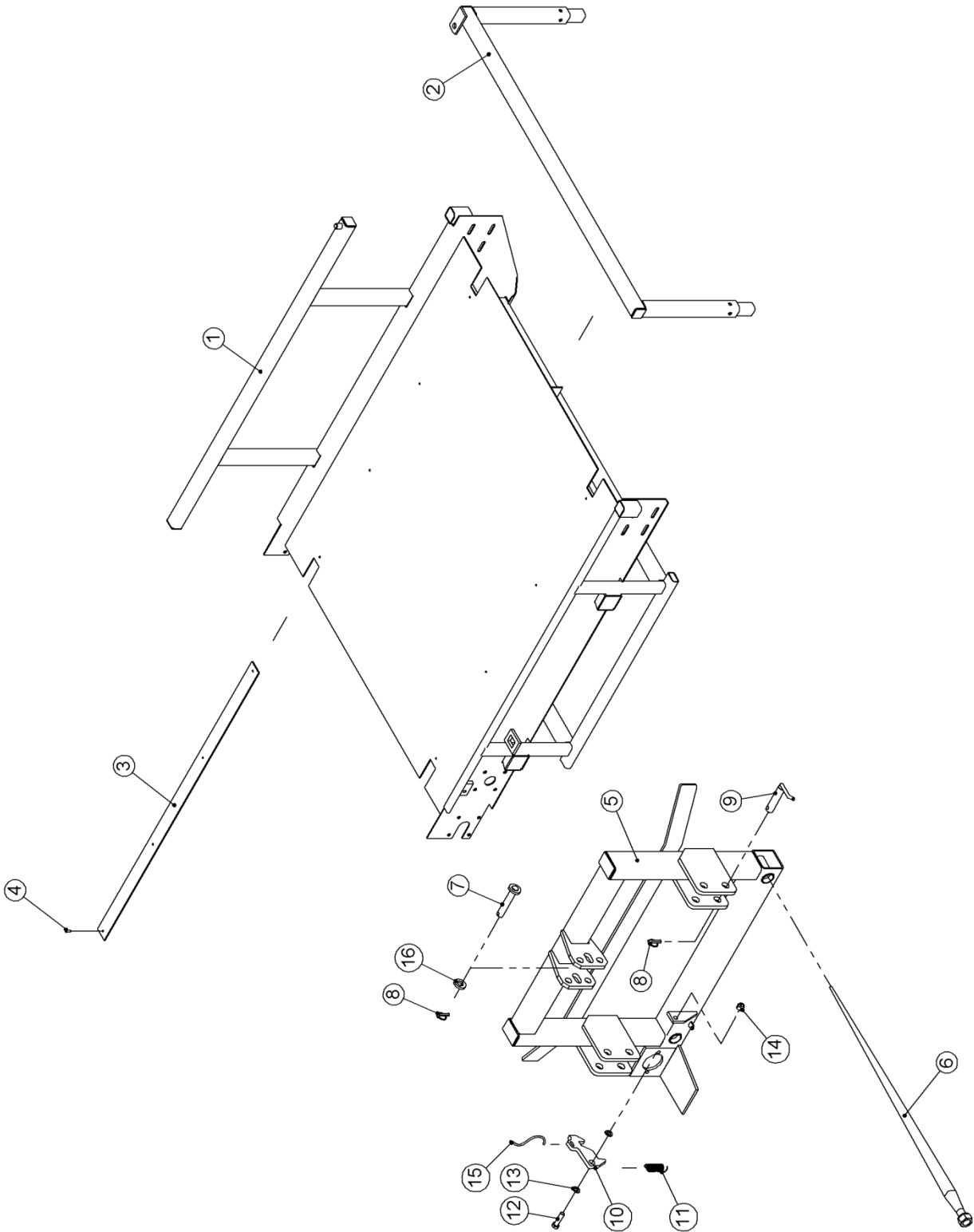
## Starting up

1. Install Rondo-Dan in the tractor's three-point coupling, and connect the two hydraulic hoses to the oil motor to a double-action remote socket outlet. Note max. working pressure: 210 bar.
2. Check that nobody is within the danger area.
3. Activate the double-action remote socket outlet on the tractor and check from the driver's seat that bottom chain and unroller drum rotate freely.
4. Stop oil motor and set machine on a level floor with good access. The latch locking the three-point frame with spike to the unrolling table is released from the driver's seat.
5. Drive tractor forward and check that spike slide easily out of their tubular guides. Adjust as necessary with top link.
6. Fetch round bale from storage by lowering the spikes all the way to the ground. Back the spikes in under the round bale until it pushes against the three-point frame, and lift it.
7. Unload round bale on to unrolling table by lowering three-point frame and drive forward until spikes are free.
8. Then lower spikes, and reverse so that they slide into their respective tubular guides. Check that lock interlocks automatically and couples with three-point frame and unrolling table. Lift machine.
9. Drive round bale to unloading place.
10. Before unrolling commences, use remote control handle to ensure that nobody is within danger area. Depending on tractor's r.p.m. and forward speed, dose out the quantity desired.
11. If oil motor stops in the middle of unloading, reverse oil flow for a moment with remote control handle, after which machine is again ready to continue unrolling. For round bales with hard cores it can be necessary for reasons of time to reverse the oil motor and transport the core out under the guard against the unroller drum

**NB** With large round bales of about 1,80m. in diameter, be careful of open rear window in driver's cabin. With raised machines it can be necessary to close window to avoid damage.

## Spare Parts List

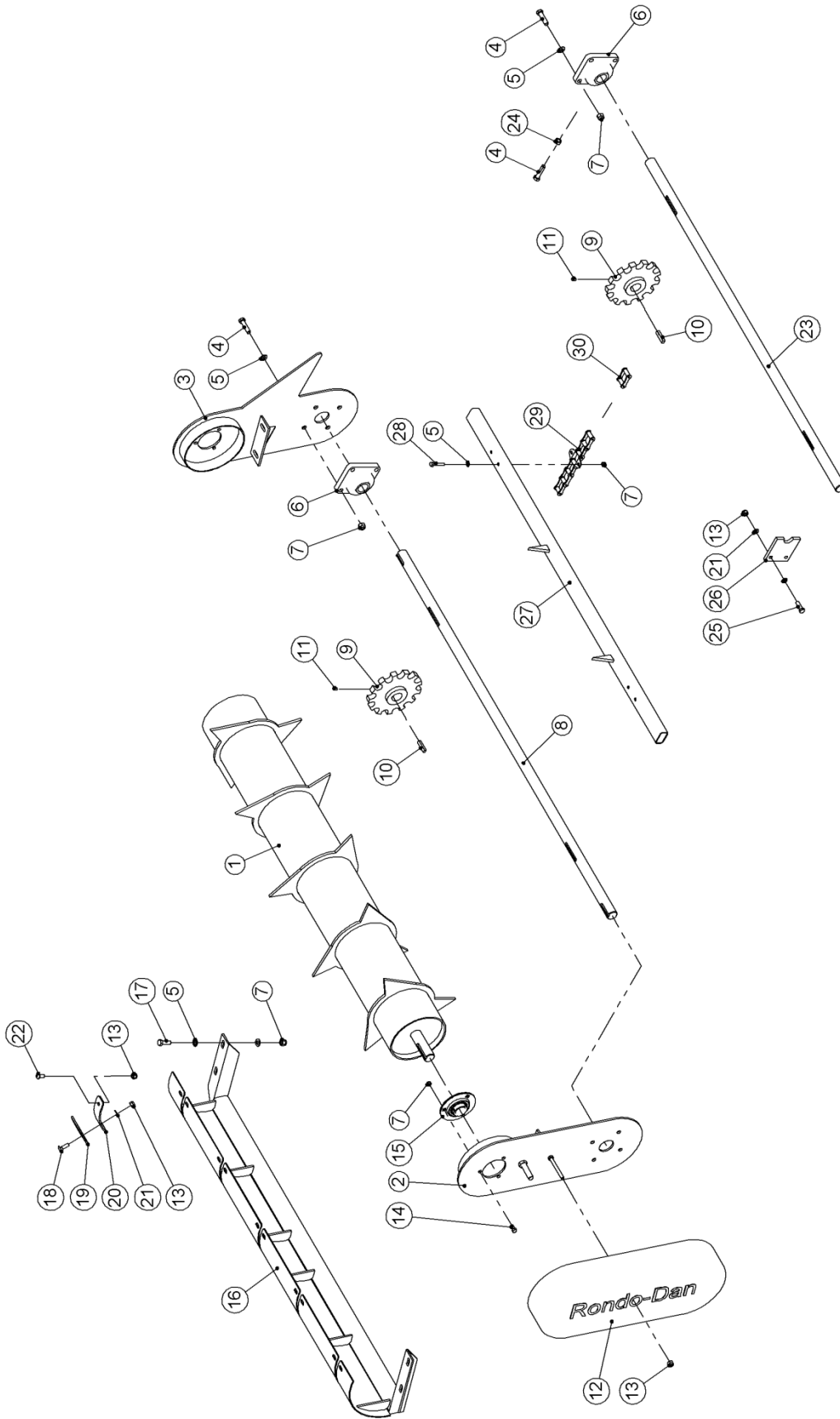
### Frame





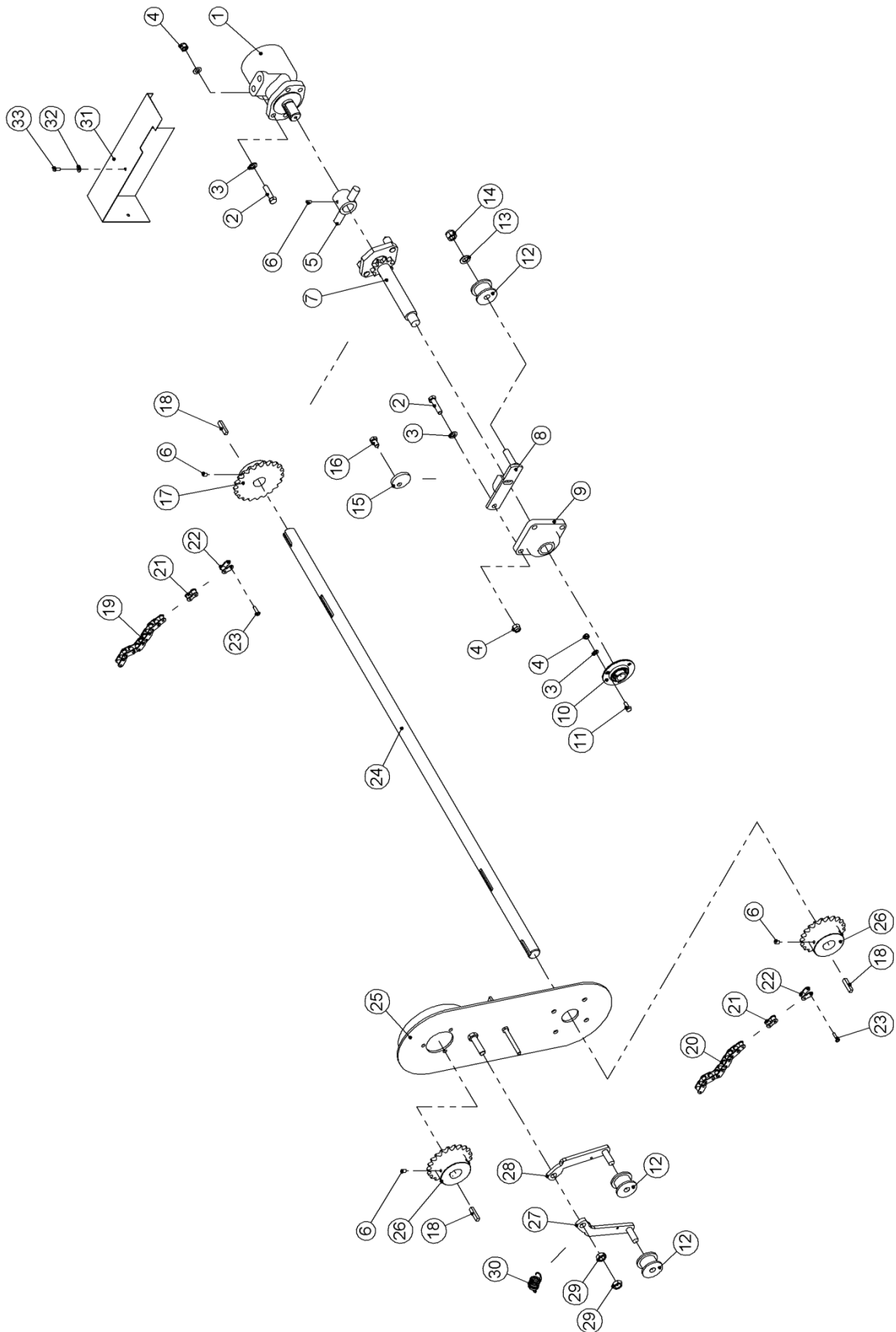
Pos.	Part No.	Description	Number
1	1070290	Carrying frame, right carrying-out	1
	1070295	Carrying frame , left carrying-out	1
2	1070260	Hand rail, right carrying-out	1
	1070261	Hand rail, left carrying-out	1
3	1070330	Wearing bar	2
4	0243200	Machine screw M6x20	8
5	1070051	Three-point suspension	1
6	0410500	Spike 1250mm. with nut	2
7	1068890	Spike Ø25x145mm.	1
8	0378600	Split pin Ø11x40mm.	3
9	1055460	Spike Ø28x120mm.	2
10	1070971	Locking device	1
11	0431630	Spring Ø2,5x18x80mm.	1
12	0235840	Hexagon bolt M16x60mm. 8.8	1
13	0272290	Disc Ø16	2
14	0264090	Lock nut M16	1
15	0486250	Rope Ø6	2
16	1044600	Disc Ø26x8mm.	1

**Carrying-out**



Pos.	Part No.	Description	Number
1	1070242	Roller with 5 teeth	1
2	1070171	Wear plate	1
3	1070182	Wear plate	1
4	0235380	Hexagon bolt M12x50mm. 8.8	18
5	0272270	Disc Ø12	60
6	0478700	Flanged bearing Ø35 UCF207	4
7	0264070	Lock nut M12	62
8	1070020	Shaft Ø35x1650mm.	1
9	1070040	Sprocket wheel with 13 teeth	4
10	1070100	Key 10x8mm.	4
11	0227520	Socket set screws M8x12mm.	4
12	0485650	Plastics screen	1
13	0264060	Lock nut M10	25
14	0234750	Hexagon bolt M8x20mm.	6
15	0471880	Bearing Ø35	2
16	1070251	Screen	1
17	0235350	Hexagon bolt M12x35mm.	4
18	0248421	Carriage bolt M10x30mm.	10
19	1070720	Plate	5
20	1070690	Scraper plate	10
21	0272260	Disc Ø10	18
22	0227830	Screw M10x20 10.9	10
23	1070010	Shaft Ø35x1490mm.	1
24	0261370	Nut M12	4
25	0235060	Hexagon bolt M10x35mm. 8.8	4
26	1070450	Bearing Ø35	2
27	1070000	Dog	9
28	0234800	Hexagon bolt M8x45mm. 8.8	18
29	0409460	Chain S55-89 link	2
30	0409470	Joint link	2

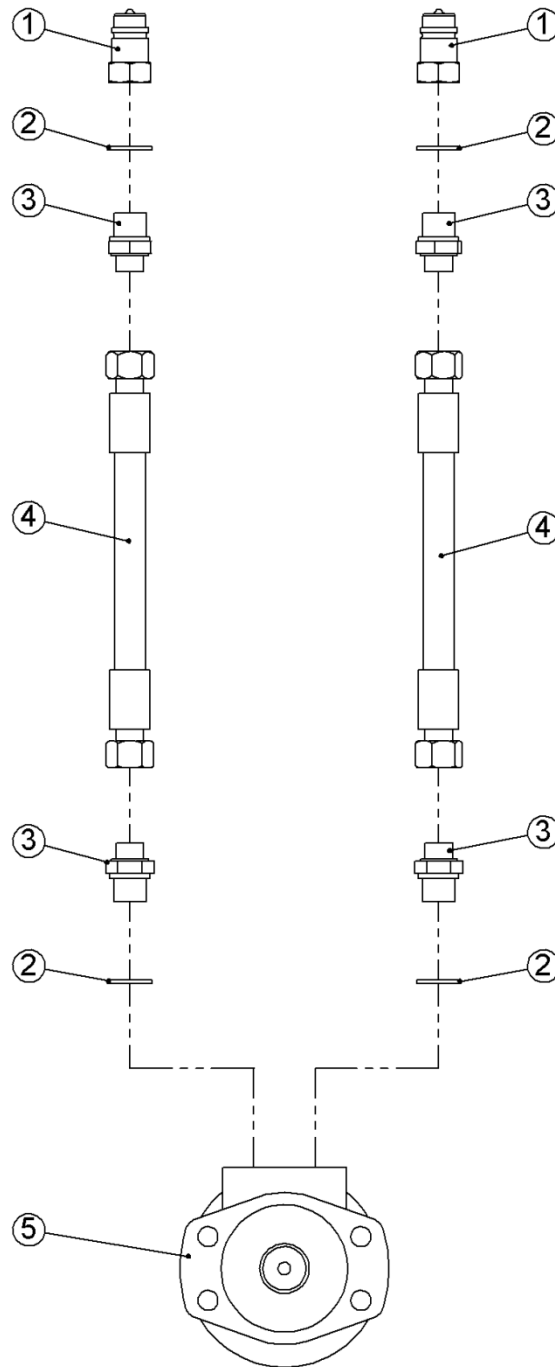
**Carrying-out motor**



Pos.	Part No.	Description	Number
1	0442070	Oil motor 204 CC with Ø32 shaft	1
2	0235380	Hexagon bolt M12x50mm. 8.8	6
3	0272270	Disc Ø12	13
4	0264070	Lock nut M12	9
5	1071190	Bush	1
6	0227520	Socket set screws M8x12mm.	3
7	1071200	Shaft with 10 teeth sprocket wheel	1
8	1070220	Turnbuckle	1
9	0478700	Flanged bearing UCF207 Ø35	1
10	0471850	Bearing Ø25	1
11	0234750	Hexagon bolt M8x20mm. 8.8	3
12	1070160	Tension roller	3
13	0272290	Disc Ø16	1
14	0264090	Lock nut M16	1
15	1071080	Disc	1
16	0235320	Hexagon bolt M12x20mm. 8.8	1
17	1070190	Sprocket wheel with 23 teeth	1
18	1070100	Key 10x8mm.	3
19	1071240	Chain – length 795mm. ¾”	1
20	1071250	Chain – length 1210mm. ¾”	1
21	0409630	Joint link	2
22	0409631	Joggled joint link	1
23	0409632	Rivet	1
24	1070020	Shaft Ø35x1650mm.	1
25	1070171	Side plate	1
26	1070191	Sprocket wheel with 21 teeth	2
27	1070130	Turnbuckle, right	1
28	1070140	Turnbuckle, left	1
29	0261392	Counter nut M16x2,0	2
30	0431600	Spring Ø2,0x16x30mm.	1
31	1070230	Screen, right carrying-out	1
	1070231	Screen, left carrying-out	1
32	0271530	Face plate Ø6	2
33	0234280	Hexagon bolt M6x16mm. 8.8	2

# Hydraulic

## Oil motor

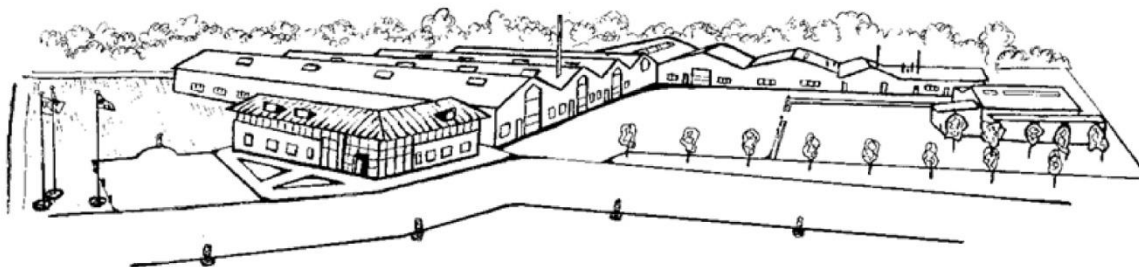


<b>Pos.</b>	<b>Part No.</b>	<b>Description</b>	<b>Number</b>
1	0444020	Quick-coupling 1/2"	2
2	0449070	Bounded seal 1/2"	4
3	0444550	Hexagon nipple 1/2" - 3/8"	4
4	0454520	Hose 1600mm. 3/8"	2
5	0442070	Oil motor with Ø32 shaft	1

GOOD AS IT LOOKS!  
AS GOOD AS IT LOOKS!  
AS GOOD AS IT LOOKS!  
AS GOOD AS IT LOOKS!  
AS GOOD AS IT LOOKS!  
AS GOOD AS IT LOOKS!



2010  
Denmark



The design is subject to modification without notice.