

HE-VA Combi-Tiller

MKI & MKII



Force and flexibility



Combi-Tiller MKI

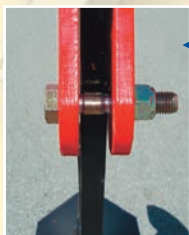
Flexible soil loosening

The HE-VA Combi-Tiller MKI is a sub-soiler developed for working solo or combined with a trailed implement. With a total length of merely 750 & 160 mm tine staggering, the HE-VA Combi-Tiller MKI is ideal for combination. The HE-VA Combi-Tiller MKI is available w/various number of tines for row spacing from 500-833mm. The row spacing can be adjusted individually via the bolted tine brackets.

Combi-Tiller MKI mounted in the linkage arms of the tractor for working solo, or combined with a trailed implement.



The quick couplings allow the HE-VA Combi-Tiller MKI to be built together with another three-point mounted implement, for example the HE-VA Disc-Roller.



The HE-VA Combi-Tiller MKI construction is protected from overloading via shear bolts fitted on each tine.

The working depth is adjusted manually in increments of 50 mm by the height position of the tines. This includes a parking position as well where the tines are lifted completely from the ground.



Comb

The exten

The HE-VA Combi-T...
plough pan togeth...
large unwanted clo...
hydr. automatic rel...
even the heavy soil

Combi-Tiller MKII b...
wheel stabilizes the...
rigid models).



The 4.00, 5.00 & 6.00 m C...
are available with hydr. fo

COMBINATIONS FOR HE-VA COMBI-TIL

1. Soil loosening

- a) Combi-Tiller solo - the soil is loosened but not consolidated.
- b) Combi-Tiller / Disc-Roller (raised discs) - the soil is loosened - the surface is divided into fine particles, leveled and consolidated.

2. Stale seedbed / seedbed in ploughed soil

- a) Disc-Roller solo - at high speed, the straw and plant residue is incorporated into a stale seedbed, and the roller consolidates the seed into the soil for rapid germination.
- b) Combi-Tiller / Disc-Roller - with the tines fully raised, this combination creates a stale seedbed as described above. The machine will be heavier, which is a great advantage when cultivating/consolidating newly ploughed or very stony soils.

3.

- a) C...
- tr
- st

4.

- a) A
- b
- g
- b) V
- C
- t

Combi-Tiller MKII

Expanded version

Combi-Tiller MKII lifts the soil to break hard stratum of earth/ subsoil with an oxidation of the soil - without bringing stones to the surface. The 420mm tine staggering and the release system prepare the HE-VA Combi-Tiller MKII for different types, to the advantage of the professional farmer.

Combined together with the HE-VA Disc-Roller. The depth adjustment is located at the front corner of the machine (extra equipment on



Hydraulic adjustable linkage with drawing clevis

- this allows the HE-VA Combi-Tiller MKII to work solo, mounted directly in the three-point linkage of the tractor, or to be combined with a trailed implement.

Combi-Tiller MKII can be mounted in two sections.

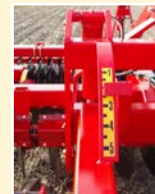


HYDR. THREE-POINT LINKAGE



Hydr. three-point linkage - is standard equipment on the Combi-Tiller MKII. This linkage allows the Combi-Tiller MKII to be mounted with a trailed implement directly in the three-point linkage Cat. 2/3. The linkage will then act as a hydr. depth adjustment of the Combi-Tiller MKII tines.

A scale on the hydraulic linkage allows the driver to see the exact position of the hydr. linkage.



When combined with a HE-VA Disc-Roller, the tine working depth can be adjusted from 50 mm above the soil surface to a max. depth of 400 mm.



STONE PROTECTION

The Combi-Tiller MKII is available with two different stone protections:



Quick-Push stone protection

- when the shear bolt is cut over if a tine has hit a stone or the like, the R-clip is removed and the shear bolt is easily pushed forward into new position.



Hydraulic automatic release system

- the machine is protected against overloading by a hydraulic cylinder connected to two large gas accumulating tanks. When the tine is released by a stone, it will reposition itself automatically.



COMBI-TILLER MKI & COMBI-TILLER MKII

Seedbed preparation

Combi-Tiller / Disc-Roller - the tines loosen and oxidize the soil, the discs cultivate the soil at sowing depth, and the roller consolidates the soil again to a well drained and structural seedbed.

4. Sowing with the Multi-Seeder

A mounting of the Multi-Seeder allows you to choose between broadcast sowing and row sowing of cover crops/ green manure or rape.

When row sowing rape, a soil loosening by means of the Combi-Tiller tine is the obvious solution. Disc Cultivation of the soil is optional.



COMBI-TILLER
MKI & MKII

COMBI-TILLER TINE & WEARING POINTS

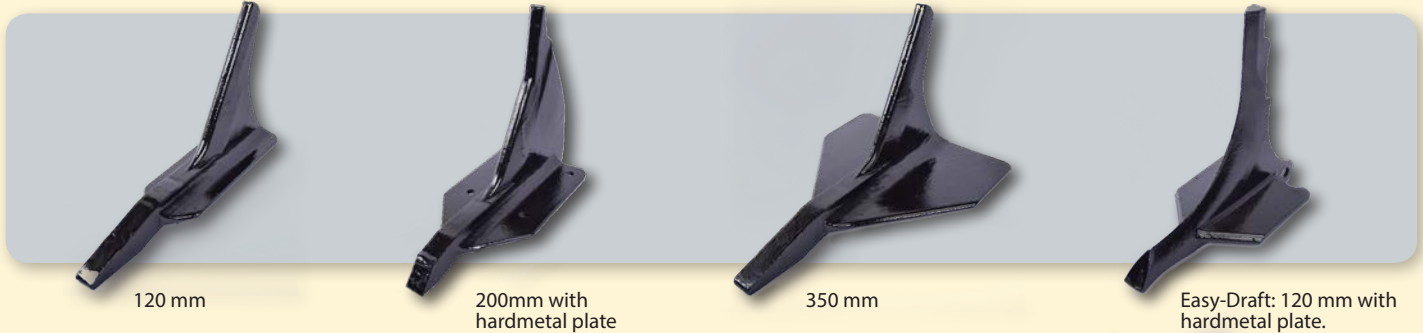
Soil loosening from -50 to 400 mm

The HE-VA Combi-Tiller models have a working depth down to 400 mm. The tine points have as standard 200 mm wing shares, lifting and loosening the soil in the chosen working depth. The design of the tine avoids bringing stones and unwanted clods to the surface.



Points ensure minimum power requirement

The hardened steel cast wearing point is designed for minimum power requirement. It is wide at the bottom with an extra protection around the side of the tine, whereas it is narrow at the top in order to break/cultivate the surface at the minimum. The durable point is mounted with one bolt resulting in an easy and quick replacement. Tine points are available with 120, 200 or 350 mm wing shares.



120 mm

200mm with
hardmetal plate

350 mm

Easy-Draft: 120 mm with
hardmetal plate.

TECHNICAL SPECIFICATIONS

Combi-Tiller MKI

Working width	Model	Number of tines	Distance between tines	Weight, kg	Power requirement, HP
2,50 m	Fast	4	57,5 cm	505	30 - 100
3,00 m	Fast	5-6	46,7 - 56,0 cm	560 - 595	50 - 150
3,50 m	Fast	6-7	47,1 - 55,0 cm	615 - 650	50 - 175
4,00 m	Fast	7-8	47,7 - 54,3 cm	670 - 705	70 - 200

Combi-Tiller MKII

Working width	Model	Number of tines	Distance between tines	Weight, kg	Power requirement, HP
3,00 m	Fast	5	60	890 - 1.035	50 - 125
3,50 m	Fast	6	58	985 - 1.130	60 - 150
4,00 m	Fast & Hydr.	7 - 8	50 - 57	1.085 - 1.570	70 - 200
4,00 m HD	Hydr.	7 - 8	50 - 57	1.310 - 1.570	70 - 200
5,00 m HD	Hydr.	9	55,5	1.570 - 1.715	90 - 225
6,00 m HD	Hydr.	11 - 12	50 - 54,5	2.130 - 2.385	200 - 300



N. A. Christensensvej 34
DK-7900 Nykøbing Mors
Tel: +45 9772 4288
Fax: +45 9772 2112

Email: info@he-va.com
Web: www.he-va.com



YOUR LOCAL HE-VA DEALER

Due to our policy of continual improvement we reserve the right to change specifications without notice E & O.E.