

# **HE-VA**

## **Disc-Roller XL Contour**



***For maximum processing  
of the soil***

# HE-VA Disc-Roller Technology

Efficient processing of even the most difficult soils



The Disc-Roller XL Contour is a versatile cultivator. It can be used to mix stubble and other crop residues with a working depth down to 175 mm in reduced soil working. It is also an outstanding tool for working ploughed soil prior to sowing.

The high net weight and large discs give highly efficient cutting as well as good compacting of the processed soil. Despite the spacious design, it is compact and therefore easy to manoeuvre both in the field and on the road.

## LARGE DISCS FOR OPTIMAL MIXING IN DEPTH



610 mm disc

Traditional 510 mm disc

The Disc-Roller XL Contour can be fitted with both 610 mm and 570 mm discs. The new, larger discs penetrate deeper into the soil, where they effectively incorporate plant and stubble material – even large amounts of crop residues, such as maize stems or cover crops, are incorporated without problems.

The large discs are staggered, which allows maximum movement and mixing of soil and straw material, when working the surface, and because the discs are more powerful and designed with larger teeth that efficiently grip the soil, the risk of them jamming during operation is minimised.

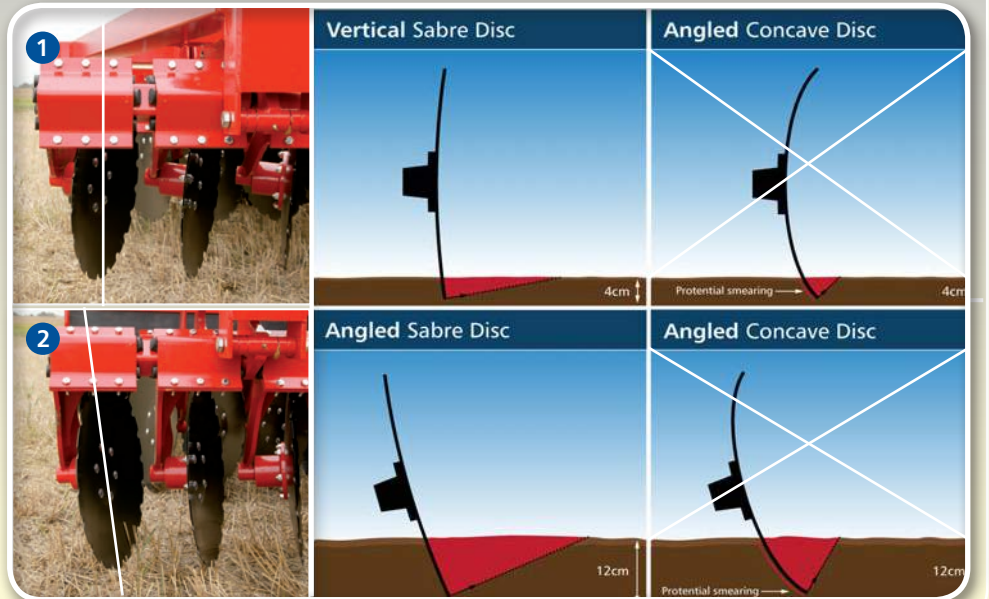
# UNIQUE DISC TECHNOLOGY (DSD)

## DSD - Depth Synchronized Disc

The DSD system is an aggressive depth control system in which the discs are automatically given a more aggressive angle the deeper they penetrate into the soil.

**1** When working close to the surface, the DSD system ensures that the disc is perpendicular to the ground (vertical), which means the discs push the soil horizontally (laterally) and the entire surface of the soil is moved. The vertical angle ensures that the soil is loosened rather than being scooped out, minimising the risk of smearing and consequent jamming.

**2** For usage as a deep disc cultivator or for mixing and incorporating crop residues, a more aggressive disc angle is required. The DSD system automatically increases the aggressiveness by changing the angle of the discs relative to the soil surface.



## OPTIMAL CONDITIONS FOR GERMINATION

The Disc-Roller XL Contour is designed with a greater depth in the frame structure than smaller disc harrows to provide room for the large discs and ensure good soil flow.

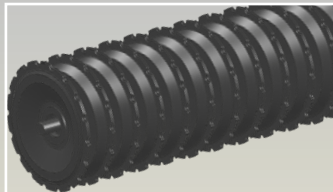
With good soil flow, the plant material is more easily incorporated, creating optimum conditions for germination.



## ROLLER TYPES

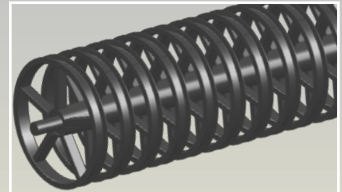
### V-profile

The V-profile roller crushes clods highly efficiently, leaving the soil surface even. Plant, straw and stubble material is pushed down into the surface, thereby promoting decomposition.



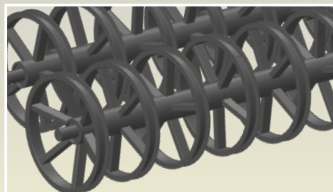
### U-profile

The U-profile roller is designed so that the roller fills with soil during operation, thus achieving good soil-to-soil compaction and giving the soil surface a natural structure without glazing.



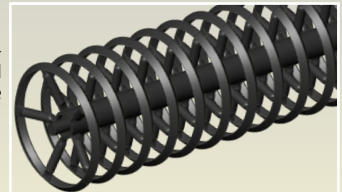
### Twin rollers

A Twin roller is a good, maintenance-free solution as the rollers clean each other during operation. The Twin U-profile roller provides good soil-to-soil compaction without any glazing.

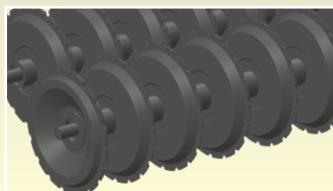


### Corrugated roller

This roller has an optimum compacting effect on light and medium-hard soil types. It leaves a fine soil surface with minimal risk of soil drift.

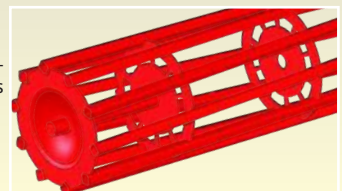


The V-profile Twin roller leaves the soil surface slightly corrugated, which has a draining effect and contributes to rapid heating and drying.



### Square Tube roller

The 550 mm square tube roller provides good depth control and crushes clods in lighter/loose soils.

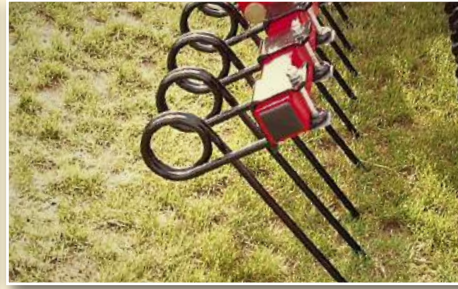


## OPTIONAL EXTRA



### SPRING-BOARD

The Spring-Board levelling board can be mounted on all trailed Disc-Roller XL Contour models. This provides good levelling.



### SPRING-BOARD WITH STRAW TINES

The Spring-Board with straw tines effectively loosens the surface and levels out straw residues before working the soil with the discs.



### LONG-FINGER AFTER-HARROW

A long-finger after-harrow located behind the roller leaves a nice, evenly levelled surface following processing of the soil.



### SOIL SCREEN

A rubber curtain can be installed to ensure that the soil falls in front of the packer rings, presenting a more uniform surface for compacting. This can be adjusted in height to maximise the effect.



### ELECTRIC DEPTH STOP

Can be installed as an optional extra. This makes it possible to control the depth so that it is always the same. The function has a manual switch.



### MULTI-SEEDER

A mounting bracket is available for a HE-VA Multi-Seeder for rape, grass seed and other small seeds, fertiliser or slug pellets.

## DISC-ROLLER XL CONTOUR SPECIFICATIONS



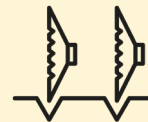
2.25 - 7.25 m



80 - 240 hp



2.45 - 2.62 m



18 - 58 pcs

Model	Working width	Transport width	Type	Number of sections	Fold	Number of discs	Power requirement, HP
2.50 m	2.25 m	2.45 m	Mounted & trailed	1	Fixed	18	80
3.00 m	2.75 m	2.45 m	Mounted & trailed	1	Fixed	22	100
3.50 m	3.25 m	2.45 m	Mounted & trailed	1	Fixed	26	110
4.00 m	3.75 m	2.45 m	Mounted & trailed	1	Fixed	30	120
4.50 m	4.25 m	2.52 m	Trailed	2	Foldable	34	130 - 140
5.50 m	5.25 m	2.52 m	Trailed	2	Foldable	42	160 - 170
6.50 m	6.25 m	2.62 m	Trailed	3	Foldable	50	190 - 200
7.50 m	7.25 m	2.62 m	Trailed	3	Foldable	58	190 - 240

Dealer:



N. A. Christensensvej 34  
DK-7900 Nykøbing Mors  
Tel: +45 9772 4288  
Fax: +45 9772 2112

Email: [info@he-va.com](mailto:info@he-va.com)  
Web: [www.he-va.com](http://www.he-va.com)

