

UK

HE-VA

Operating instructions
Spare Parts List
Declaration of Conformity

good as it looks

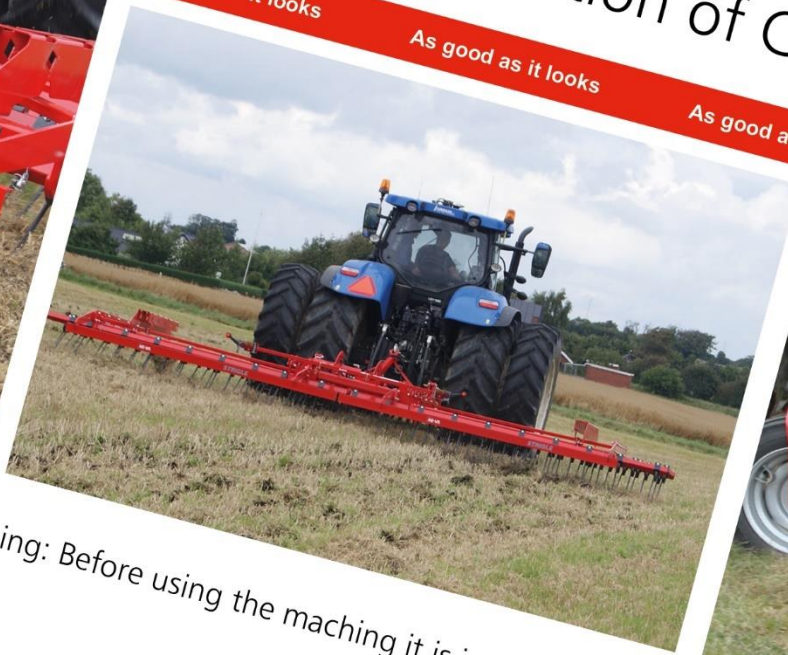
As good as it looks

As good as it looks

As good as it looks

As good as it looks

As good as it looks



Warning: Before using the machine it is important to read the operation instructions.

Top-Strigle

Working width: 3,0 - 4,0 - 5,0 - 6,0 - 7,0 - 8,0 - 9,0 - 10,0m 4-bars
Manual no. 8000111-03 220121



N. A. Christensensvej 34
DK-7900 Nykøbing Mors
Tel: +45 97724288
Fax: +45 97722112
www.he-va.com

Contents

Delivery Check	4
Machine description.....	4
Technical specifications	5
Working with the Top-Strigle.....	5
Safety around the Top-Strigle.....	6
Safety Instructions, regarding Hydraulic System	7
Markings on the machine.....	8
Maintenance.....	9
Disposal.....	10
Noter	10
Spare parts list.....	11
For models before chassis number: 538020.....	11
Right wing w/Ø12 mm tines	11
Noter	14
For models after chassis number: 538020	15
Right wing with Ø12 mm tine	15
Main frame and frame for rearmounting	17
8m extension kit 70/70 bars w/Ø16 tine	18
Left wing w/Ø16 mm tine 5,0 – 6,0 – 7,0 – 8,0 m.....	19
Middle frame 9,0-10,0m 3-section model.....	22
Side section, links 9,0-10,0m.....	23
Bars overview	25
Support wheel	26
LED - Lighting set	26
Hydraulic.....	28
Hydraulic 4,0 - 5,0 - 6,0 - 7,0 - 8,0m	28
Hydraulic 9,0 - 10,0m	0



EC DECLARATION OF CONFORMITY

in accordance with the EU Machinery Directive 2006/42/EC
applicable as from December 29th 2009:

HE-VA ApS
N. A. Christensensvej 34,
DK-7900 Nykøbing Mors

hereby confirms that the following machine has been manufactured in accordance with the Council
Directive 2006/42/EC.

The declaration comprises the following machines:

Top-Strigle w/2 bars
3,0m – 4,0m rigid
4,0m – 8,0m hydraulic

Nykøbing d. 28. februar 2011


Villy Christiansen

The undersigned is furthermore authorised to compile technical documentation for the above machine.

Delivery Check

Check the Top-Strigle for any damage when it is received at either the dealer and the final customer. Check that the frame construction has not been exposed to impacts. Check the air-pressure in the tires before operating. Check the hydraulic hoses for cuts and squeezing damages. Check also the other hydraulic components, are not damaged during transport.

Machine description

The Top-Strigle is a 4 bar strigle which is suitable for aeration of pasture or spreading out heaps of straw as well as making seeds from weeds and wasted grain germinate. The machine can be delivered as either a front- or a tail mounted Strigle, and also with both options.

The machine can be delivered with two different types of tines:

- 12 mm x 440 mm tines for aeration of pasture
- 16 mm x 660 mm tines for spreading straw and make undesirable seeds germinate

Standard equipment:

- Wheels – 2 stk. 200/60x14,5”
- 4 hydraulic adjustable bars
- The individual angle between the bars are mechanically adjusted

Row spacing:

- With 12 mm tines: 6,0 cm
- With 16 mm tines: 8,3 cm

Distance between bars:

- 300 mm



Technical specifications

Working width	Tine size	Transport width	Transport-height	No. of tines	HP requirement	Weight in kg
3,00m rigid	12mm	3050	1500	50	85-110	790
	16mm	3050	1500	36	95-115	850
4,00m rigid	12mm	4050	1500	66	100-125	950
	16mm	4050	1500	48	110-135	1050
4,00m hydr.	12mm	1500	2100	66	100-125	1370
	16mm	1500	2100	48	110-135	1480
5,00m hydr.	12mm	1500	2600	82	120-145	1570
	16mm	1500	2600	60	130-155	1660
6,00m hydr.	12mm	1500	3100	100	140-170	1750
	16mm	1500	3100	72	155-180	1850
7,00m hydr.	12mm	1500	3600	116	160-195	1950
	16mm	1500	3600	84	190-230	2050
8,00m hydr.	12mm	1500	3600	132	175-225	2180
	16mm	1500	3600	96	225-275	2280
Tyre pressure			3,8 bar / 55 psi			
Oil pressure			min. 150 bar			
Hydraulic outlets			2 double acting			
Quick couplings, standard			Sterling type E 402			
Hydraulic oil: The machine is filled with			Hydro Texaco HD32			

Working with the Top-Strigle

There is no standard tine angle recommended. The operator may adjust to achieve the desired results. The following issues listed must be taken in consideration:

- Actual settings will vary with tine wear
- Ensure frame is leveled horizontal
- Operate with the lift hydraulic in float position
- For best results in stubble operate at 14 - 18 km/h, in pasture 8 - 12 km/h
- A more aggressive tine angle will hold up straw for a longer period, allowing for a more even distribution of residue
- Breaking down straw is much more effective in dry conditions
- A second pass may be required in extremely heavy straw conditions. Then work the second pass at a 30° - 45° angle to how it was worked the first time
- To prevent tine damage, avoid tight turning



Safety around the Top-Strigle

Do not operate the machine, if any **people**¹ are at risk in **the dangerous area**.²

When persons are at risk in the dangerous area (e.g. when doing adjustments, maintenance or connect or disconnecting), the following points must be met:

- Lower the machine on solid ground.
- Hydraulics must be relieved.
- Tractor must be turned off, and the key removed.
- Driver must be aware of, when operating that there is no persons at risk in the dangerous area.

Most accidents when operating the machine, transporting and doing maintenance occurs, when avoiding the most simple safety regulations.

For this reason, it is of highest importance, that any person who is operating the machine, strictly follows the safety regulations and other instructions, which belongs the machine.

The machine must only be operated, maintained and fixed by persons, who is confidential with and skilled for this work and is aware of moments of danger, which can occur.

ATTENTION!! Rotating parts and clothes in a loose condition, is a dangerous combination.

IMPORTANT!! It is strictly prohibited for any person to take place on the frame or chassis of the machine, when it is either operating or the tractor is idling.

Instructions for transport at public roads:

Before transport at public roads, make sure that the attachment of the implement to the tractor, is in accordance with the local rules and regulations in force (permitted total weight, permitted axel load, transport width, lights and warning signs).

When driving at public roads, the tines must be folded towards the frame. This will reduce the width of the machine substantially.

Front axel load:

When the implement is attached and at maximum load, the tractors driving properties must be ensured. Check that the front axel is sufficiently loaded. The front axel load must be at least 20% of the tractors weight. Permitted axel load and total weight for the tractor must be respected.

NB! The driving, controlling and braking properties are affected by the attached implement.

¹ People at risk: Any person, who is completely or partially in the dangerous area.

² Dangerous area: At the machine and underneath it, and in a distance of 4 m from it.



Safety Instructions, regarding Hydraulic System

- The highest allowable pressure, is 225 bar.
- It is recommended to mark the hydraulic connections between the implement and tractor, to avoid incorrect operation!
- When checking for hydraulic leaks, suitable safety gear must be used due to danger. (Safety, goggles, gloves, etc.)
At high pressure, hydraulic oil can penetrate the skin and cause serious injuries.
- Before any work at the hydraulic system, the implement must be lowered to solid ground. Pressure must be relieved, engine stopped, and ignition key removed.
- Check the hydraulic hoses on a regular basis, however, every six months as a minimum due to any cracks, wear and tear, etc. Replace any defective hoses immediately.
- Hydraulic hoses last for no more than 5 years.
New hydraulic hoses must be identical to the manufacturer's specifications.

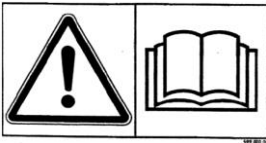


Markings on the machine

Several markings are located at your machine, which contains **safety regulations** and other instructions to inform about correct operating.

Please read these instructions carefully, and make the driver aware about the markings and **safety regulations** in this Operating Instructions. Keep the markings clean and readable. If they are not, they must be replaced.

Safety and other markings on the machine



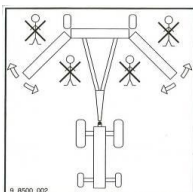
Study the Operating Instructions thoroughly before any operation of the machine and observe all safety instructions.



Plate with number and year of manufacture.



Plate with number and year of manufacture.



Take care that no persons are within the machine's hazardous area during the unfolding and folding procedure.



Maintenance

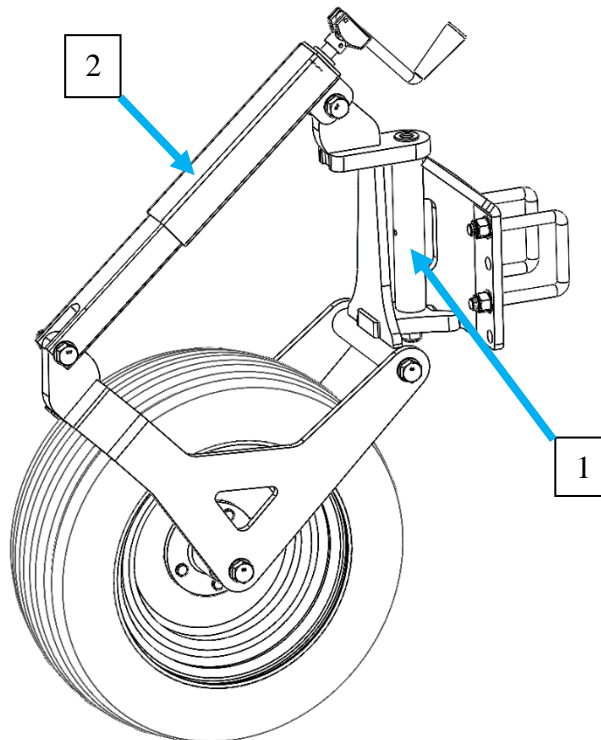
After 10 hours of operation, tightening of wheels, bearings and stop rings must be done. If this is not respected our warranty will lapse.

Maximum torque in Nm. w/lubricated thread			
Metric thread	Quality 8.8	Quality 10.9	Quality 12.9
M10x1,5	47	65	79
M12x1,75	81	114	136
M14x2,0	128	181	217
M16x2,0	197	277	333
M18x2,5	275	386	463
M20x2,5	385	541	649
M22x2,5	518	728	874
M24x3,0	665	935	1120
Hub bolts M18x1,5 fine thread		433 Nm	
Hub bolts M22x1,5 fine thread		803 Nm	

Eventually damages at the paint must be repaired at least once in the season. This will preserve and make the machine stay in a good condition for many years.

At every 25 hours of operation: The turnable bushings at the wheels must be greased (1).

Once in the season the horizontal pins/hinges for the wheel console (2) and the adjustment threads for depth must be cleaned and greased. Air pressure in the wheels must be checked.



Disposal

When, after many years of use, the machine is to be regarded as end-of-life, it must be disposed of to a registered and approved product dealer. This will carry out the statutory discharge and disposal of hydraulic oil, as well as sorting materials for further processing for recycling.

Noter

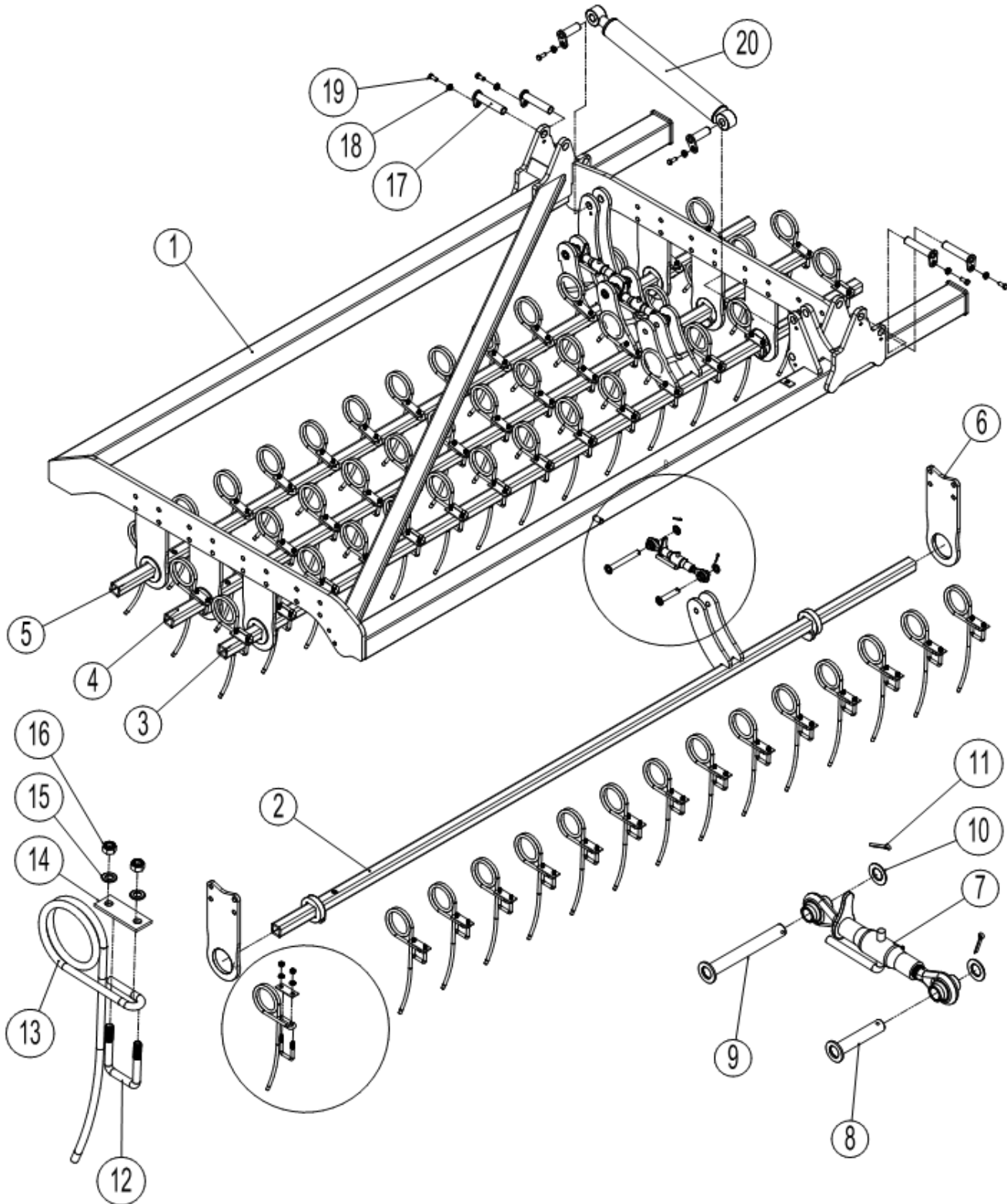
--	--

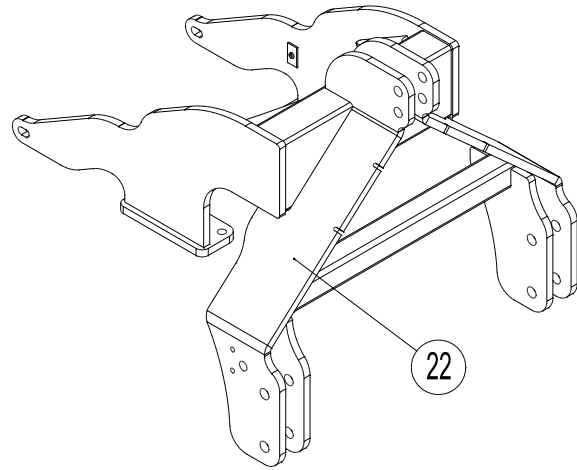
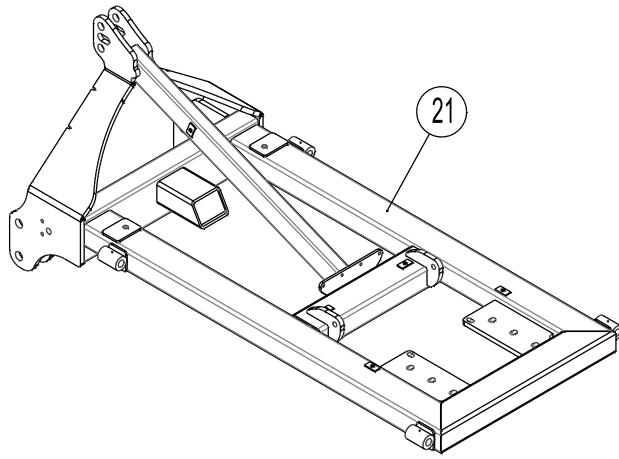


Spare parts list

For models before chassis number: 538020

Right wing w/Ø12 mm tines





Pos.	Part no.	Description	5m	6m	7m	8m
1	675172005	Left section, welded	1			
1	675172010	Right section, welded	1			
1	675172505	Left section, welded		1		
1	675172510	Right section, welded		1		
1	675172705	Left section, welded			1	1
1	675172710	Right section, welded			1	1
1	675172705	Left section, welded			1	1
1	675172710	Right section, welded			1	1
2	675172021	Bar 1 right, 70x70x2550	1			
3	675172022	Bar 2 right, 70x70x2550	1			
4	675172023	Bar 3 right, 70x70x2550	1			
5	675172024	Bar 4 right, 70x70x2550	1			
2	675172025	Bar 1 left, 70x70x2550	1			
3	675172026	Bar 2 left, 70x70x2550	1			
4	675172027	Bar 3 left, 70x70x2550	1			
5	675172028	Bar 4 left, 70x70x2550	1			
2	675172521	Bar 1 right, 70x70x3050		1		
3	675172522	Bar 2 right, 70x70x3050		1		
4	675172523	Bar 3 right, 70x70x3050		1		
5	675172524	Bar 4 right, 70x70x3050		1		
2	675172525	Bar 1 left, 70x70x3050		1		
3	675172526	Bar 2 left, 70x70x3050		1		
4	675172527	Bar 3 left, 70x70x3050		1		
5	675172528	Bar 4 left, 70x70x3050		1		
2	675174525	Bar 1 right, 50x50x3050		1		
3	675174526	Bar 2 right, 50x50x3050		1		
4	675174527	Bar 3 right, 50x50x3050		1		
5	675174528	Bar 4 right, 50x50x3050		1		



2	675174525	Bar 1 left, 50x50x3050		1		
3	675174526	Bar 2 left, 50x50x3050		1		
4	675174527	Bar 3 left, 50x50x3050		1		
5	675174528	Bar 4 left, 50x50x3050		1		
2	675174721	Bar 1 right, 50x50x3550			1	1
3	675174722	Bar 2 right, 50x50x3550			1	1
4	675174723	Bar 3 right, 50x50x3550			1	1
5	675174724	Bar 4 right ,50x50x3550			1	1
2	675174725	Bar 1 left, 50x50x3550			1	1
3	675174726	Bar 2 left, 50x50x3550			1	1
4	675174727	Bar 3 left, 50x50x3550			1	1
5	675174728	Bar 4 left, 50x50x3550			1	1
6	675010305	Holder for bar	16	16	16	16
7	690302008	Top-link	6	6	6	6
8	69520087F	Pin Ø20 x 87 mm	4	4	4	4
9	69520155F	Pin Ø20 x 155 mm	4	4	4	4
10	0272310	Facet washer Ø20 mm DIN 125B	8	8	8	8
11	0373180	Split pin Ø4x40 mm	8	8	8	8
12	0382125	U-bolt M12x50x50	82	100	116	132
13	0426125	Tine, bended Ø12x560 mm total length	82	100	116	132
14	1140792	Clamp for mounting	82	100	116	132
15	0272270	Facet washer Ø12 mm DIN 125B fzb	164	200	232	264
16	0264070	Safety nut M12 DIN 985 fzb	164	200	232	264
17	69430145G	Pin Ø30 x 145 mm	8	8	8	8
18	630532600	Lock bushing for pin head	12	12	12	12
19	0235340	Bolt M12x30	12	12	12	12
20	690200060	Cylinder for angel of tines	2	2	2	2
21	675170100	Main frame	1	1	1	1
22	675170150	3 point linkage for rear mounting (Optional)	1	1	1	1



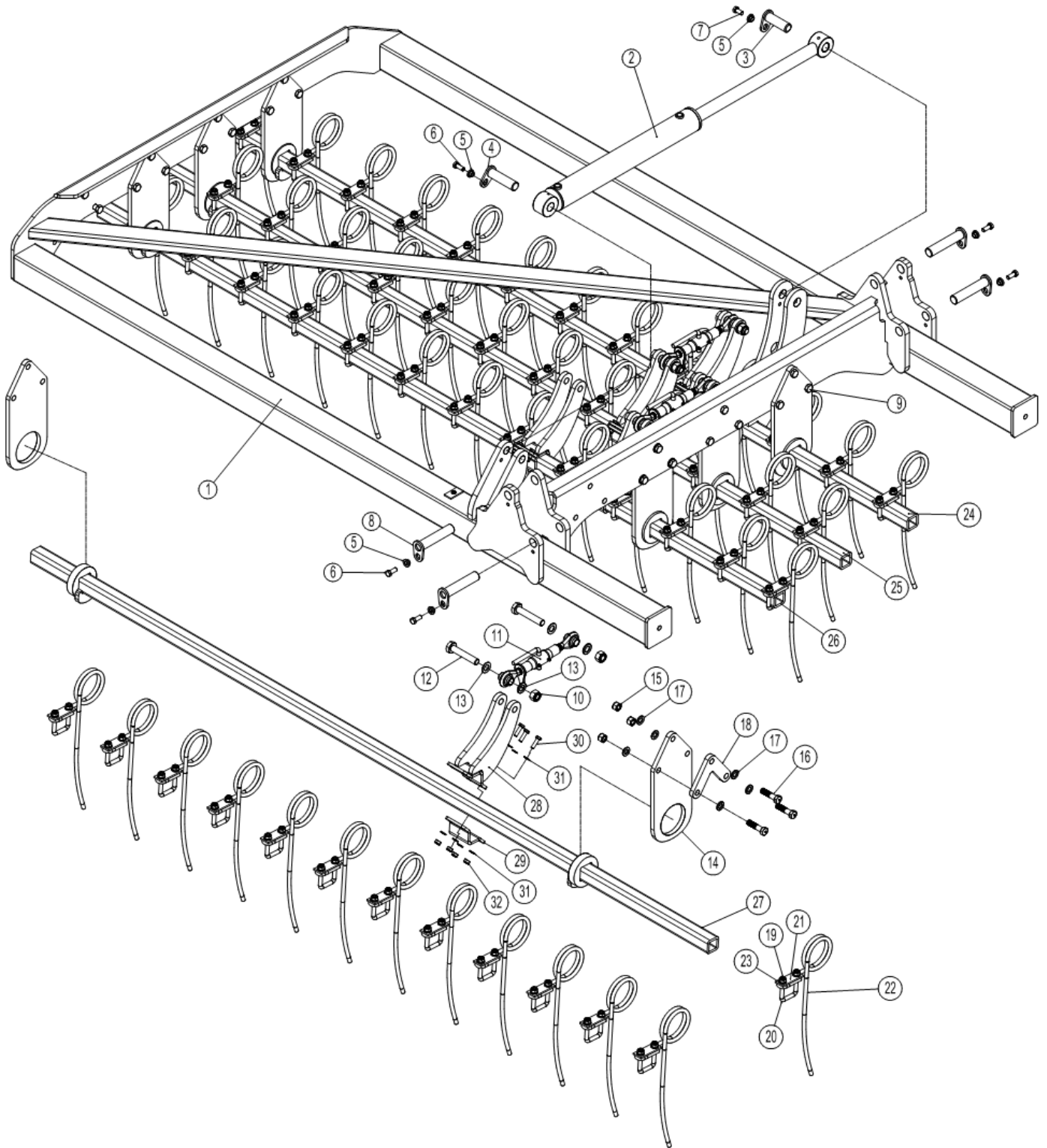
Noter

--	--



For models after chassis number: 538020

Right wing with Ø12 mm tine

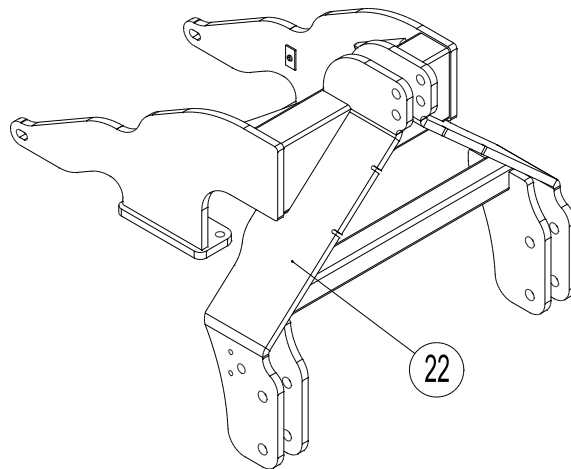
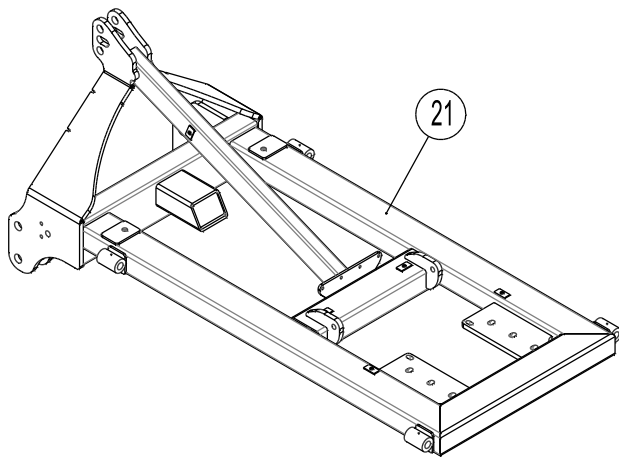


Pos.	Part no.	Description	5m	6m	7m	8m
1	1275939	Left wing, welded	1			
1	1275940	Right wing, welded	1			
1	1275409	Left wing, welded		1		
1	1275410	Right wing, welded		1		
1	1275199	Left wing, welded			1	1
1	1275201	Right wing, welded			1	1
2	690200060	Cylinder 70/40-500	1	1	1	1
3	69430090G	Pin Ø30 L=90	1	1	1	1
4	1140683	Pin Ø30 L=110	1	1	1	1
5	630532600	Lock bushing for pin head	6	6	6	6
6	0235340	Bolt M12x30 mm 8.8 fzb	5	5	5	5
7	0235330	Bolt M12x25 mm 8.8 fzb	1	1	1	1
8	69430145G	Pin Ø30 L=145 mm	4	4	4	4
9	0235830	Bolt M16x55 mm 8.8 fzb	24	21	21	21
10	0264110	Safety nut M20	6	6	6	6
11	690302008	Top-link	3	3	3	3
12	690103153	Bolt M20x110 mm 8.8 fzb	6	6	6	6
13	0272310	Facet washer Ø20 mm DIN 125B	12	12	12	12
14	1275365	Holder for bar	8	8	8	8
15	0264090	Safety nut M16	24	24	24	24
16	0235850	Bolt M16x65 mm 8.8		3	3	3
17	0272290	Facet washer Ø16 mm DIN 125B	48	48	48	48
18	1275365	Spacing plate 15 mm		1	6	6
19	0264070	Safety nut M12	82	102	116	132
20	0382125	U-bolt M12x50x50x50	41	51	58	66
21	1140792	Mounting plate 35x93	41	51	58	66
22	0426110	Tine bended Ø12x510	41	51	58	66
23	0272270	Facet washer Ø12 mm	82	102	116	132
24		Bar 50x50x2550, left 1		1		
25		Bar 50x50x2550, left 2		1		
26		Bar 50x50x2550, left 3		1		
27		Bar 50x50x2550, left 4		1		
24		Bar 50x50x2550, right 1		1		
25		Bar 50x50x2550, right 2		1		
26		Bar 50x50x2550, right 3		1		
27		Bar 50x50x2550, right 4		1		
24	1275401	Bar 50x50x3050, left 1		1		
25	1275402	Bar 50x50x3050, left 2		1		
26	1275403	Bar 50x50x3050, left 3		1		
27	1275404	Bar 50x50x3050, left 4		1		



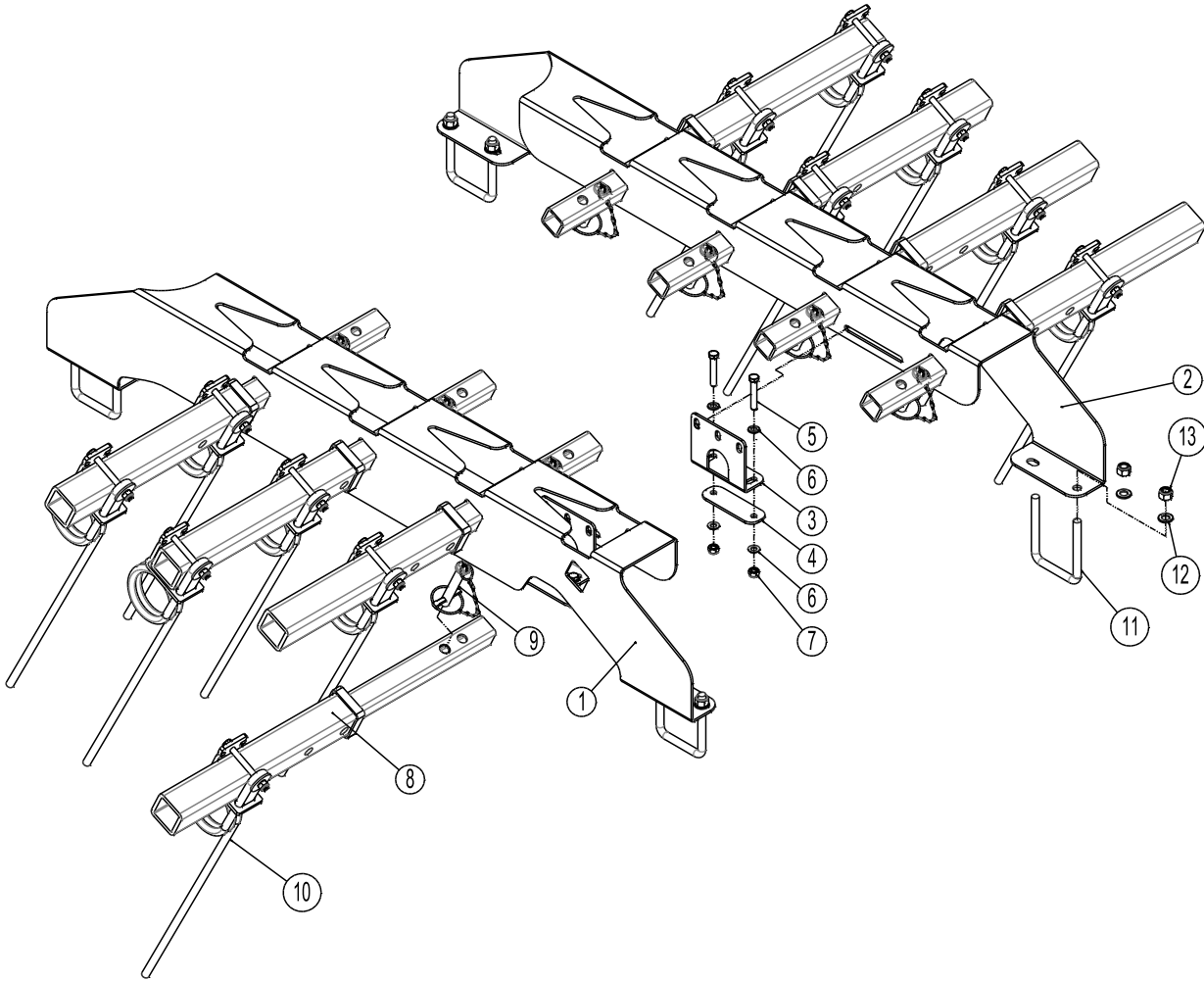
24	1275405	Bar 50x50x3050, right 1		1		
25	1275406	Bar 50x50x3050, right 2		1		
26	1275407	Bar 50x50x3050, right 3		1		
27	1275408	Bar 50x50x3050, right 4		1		
24	1275387	Bar 50x50x3550, left 1			1	1
25	1275388	Bar 50x50x3550, left 2			1	1
26	1275389	Bar 50x50x3550, left 3			1	1
27	1275390	Bar 50x50x3550, left 4			1	1
24	1275391	Bar 50x50x3550, right 1			1	1
25	1275392	Bar 50x50x3550, right 2			1	1
26	1275393	Bar 50x50x3550, right 3			1	1
27	1275394	Bar 50x50x3550, right 4			1	1
28	1275412	Horn for top-link between bars	6	6	6	6
29	1275398	Mounting clamp for horn	6	6	6	6
30	0235060	Bolt M10x35 mm 8.8 fzb	24	24	24	24
31	0272260	Facet washer Ø10 mm DIN 125B	48	48	48	48
32	0264060	Safety nut M10 DIN 985	24	24	24	24

Main frame and frame for rear mounting



Pos.	Part no.	Description	5m	6m	7m	8m
21	675170100	Main frame	1	1	1	1
22	675170150	3 point linkage for rear mounting (Optional)	1	1	1	1



8m extension kit 70/70 bars w/Ø16 tine


Pos.	Part no.	Description	8m
1	675170167	Parking holder f/extension kit, left	1
2	675170173	Parking holder f/extension kit, right	1
3	1275300	Bracket for mounting	2
4	675170169	Mounting plate f/1275300	2
5	690103093	Bolt M12x70 8.8	4
6	0272270	Facet washer Ø12	8
7	0264070	Muttern Selbstsichernde M12	4
8	675163500	Erweiterungrohr	8
9	630980400	Bolzen Ø19 L100 m/Kette und Klappsplitt	8
10	633055608	633055609 tine Ø16 mm complete w/mounting plate and bolts. (See next page)	12
11	690110101	U-Bolt M16 100x100x100	4
12	0272290	Facet washer Ø16 mm	8
13	0261390	Safety nut M16	8

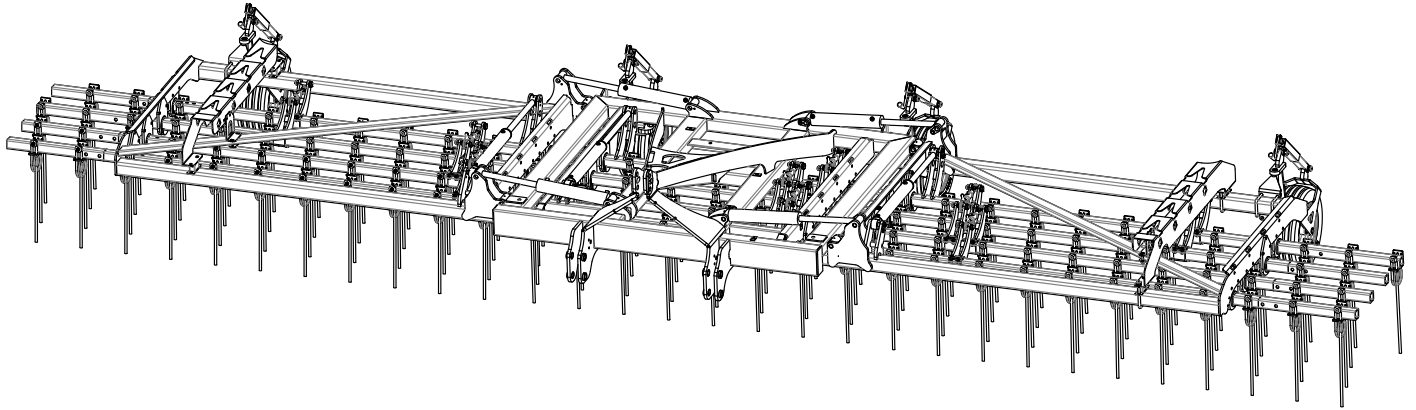


Pos.	Part no.	Description	5m	6m	7m	8m
1	1275939	Left wing, welded	1			
1	1275940	Right wing, welded	1			
1	1275409	Left wing, welded		1		
1	1275410	Right wing, welded		1		
1	1275199	Left wing, welded			1	1
1	1275201	Right wing, welded			1	1
2	0272310	Facet washer Ø20 DIN125B	12	12	12	12
3	0264110	Safety nut M20	6	6	6	6
4	0236200	Bolt M20x110, 8.8 fzb	6	6	6	6
5	690302008	Top-link	3	3	3	3
6	690200060	Cylinder 70/40-500	1	1	1	1
7	1275364	Bushing Ø31,8x6,3 L=18 mm	1	1	1	1
8	69430090G	Pin Ø30 L=90 mm	1	1	1	1
9	630532600	Lock bushing for pin head	6	6	6	6
10	0235330	Bolt M12x25 mm 8.8 fzb	1	1	1	1
11	0236360	Bolt M24x65 mm 8.8 fzb	2	2	2	2
12	0261425	Nut M24, Galvanized	2	2	2	2
13	69430145G	Pin Ø30 L=145 mm	4	4	4	4
14	0235340	Bolt M12x30 mm 8.8 fzb	5	5	5	5
15	1140683	Pin Ø30 L=110 mm	1	1	1	1
16	0235870	Bolt M16x75 8.8 fzb			3	3
17	0235830	Bolt M16x55 8.8 fzb	48	48	18	18
18	1275365	Spacing plate 15mm	3	3	3	3
19	0272290	Facet washer Ø16 DIN 125B	48	48	48	48
20	0264090	Safety nut M16	48	48	48	48
21	690103117	Bolt M16x90 8.8 fzb			3	3
22	1275369	Horn for top-link between bars	6	6	6	6
23	1275367	Mounting plate for horn	6	6	6	6
24	0272260	Facet washer 10mm DIN 125B	48	48	48	48
25	633055609	Tine Ø16 H=655	30	36	42	48
26	633055612	Mounting bracket Ø16	30	36	42	48
27	0235485	Bolt M12x120 mm 10.9	30	36	42	48
28	0264070	Safety nut M12 DIN985 fzb	30	36	42	48
29	0272270	Facetskive 12mm DIN 125B fzb	30	36	42	48
30	7355063	Conical disc	30	36	42	48
	633055619	Long finger tine Ø16 x H 655mm. Complete. Pos. 25,26,27,28,29,30.	30	36	42	48
31	0235080	Bolt M10x45 8.8 fzb	24	24	24	24
32	0264060	Safety nut M10 DIN 985	24	24	24	24

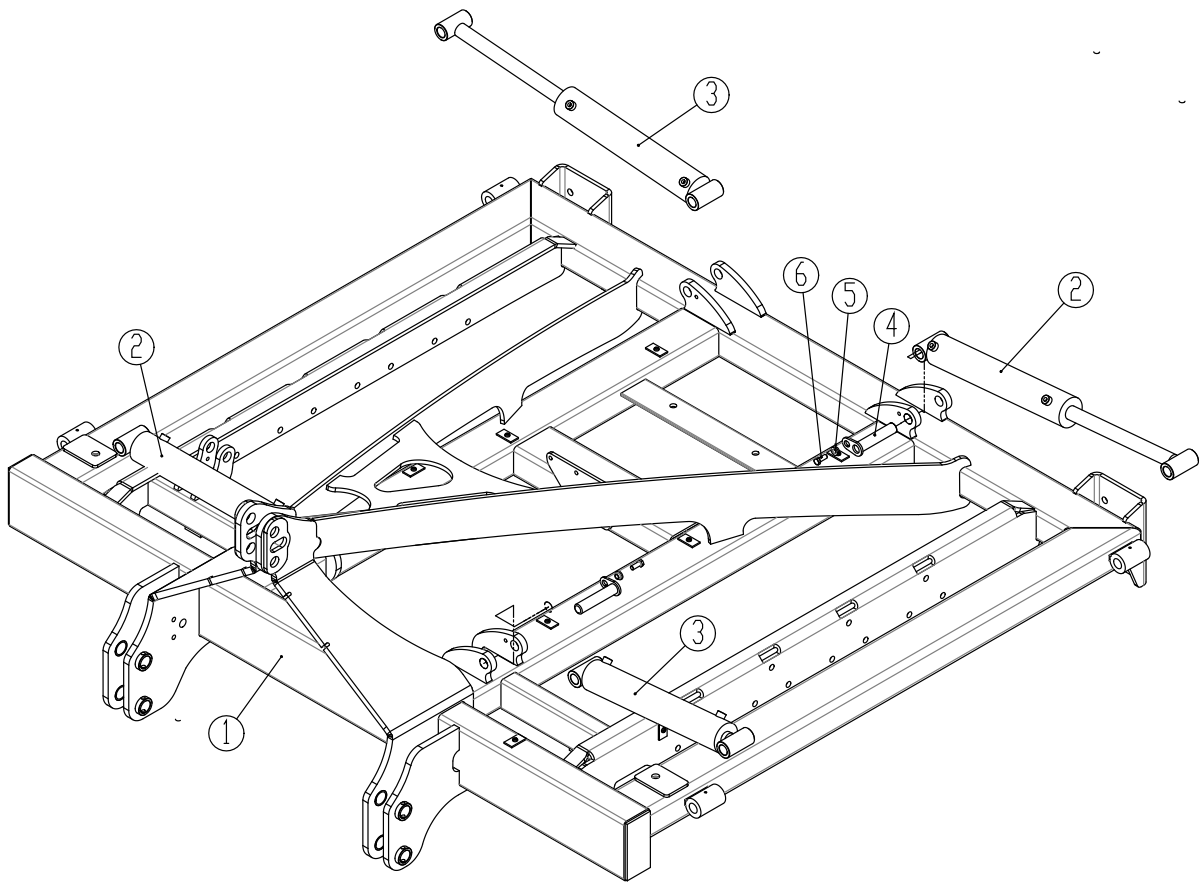


33	1275366	Holder for bar	8	8	8	8
34	1275931	Bar 70x70x2550, left 1	1			
34	1275935	Bar 70x70x2550, right 1	1			
35	1275932	Bar 2 - 3 - 4, L+R 70x70x2550	6			
34	1275452	Bar 70x70x3050, left 1		1		
35	1275453	Bar 70x70x3050, left 2		1		
36	1275454	Bar 70x70x3050, left 3		1		
37	1275455	Bar 70x70x3050, left 4		1		
34	1275456	Bar 70x70x3050, right 1		1		
35	1275457	Bar 70x70x3050, right 2		1		
36	1275458	Bar 70x70x3050, right 3		1		
37	1275459	Bar 70x70x3050, right 4		1		
34	1275371	Bar 70x70x3550, left 1			1	1
35	1275372	Bar 70x70x3550, left 2			1	1
36	1275373	Bar 70x70x3550, left 3			1	1
37	1275374	Bar 70x70x3550, left 4			1	1
34	1275375	Bar 70x70x3550, right 1			1	1
35	1275376	Bar 70x70x3550, right 2			1	1
36	1275377	Bar 70x70x3550, right 3			1	1
37	1275378	Bar 70x70x3550, right 4			1	1





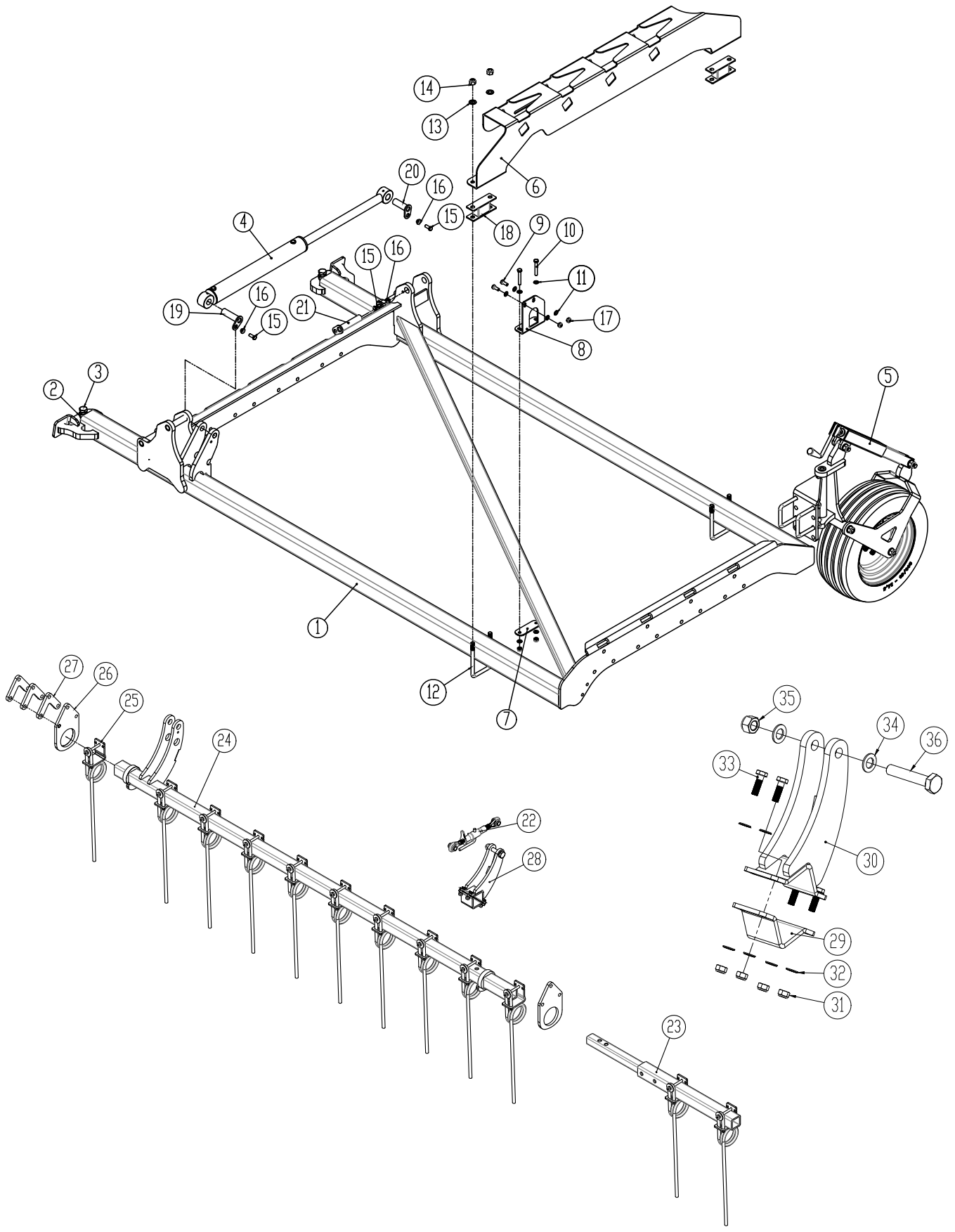
Middle frame 9,0-10,0m 3-section model



Pos.	Part no.	Description	9m	10m
1	1275610	Main frame	1	1
2	690200300	Cylinder 80/40x400 $\phi 30/\phi 30$ - 45° Right	2	2
3	690200301	Cylinder 80/40x400 $\phi 30/\phi 30$ - 45° Left	2	2
4	69430140G	Pin $\phi 30$ L=140	4	4
5	630532600	Lock bushing for pin head	4	4
6	0235340	Bolt M12x30 8.8 fzb	4	4



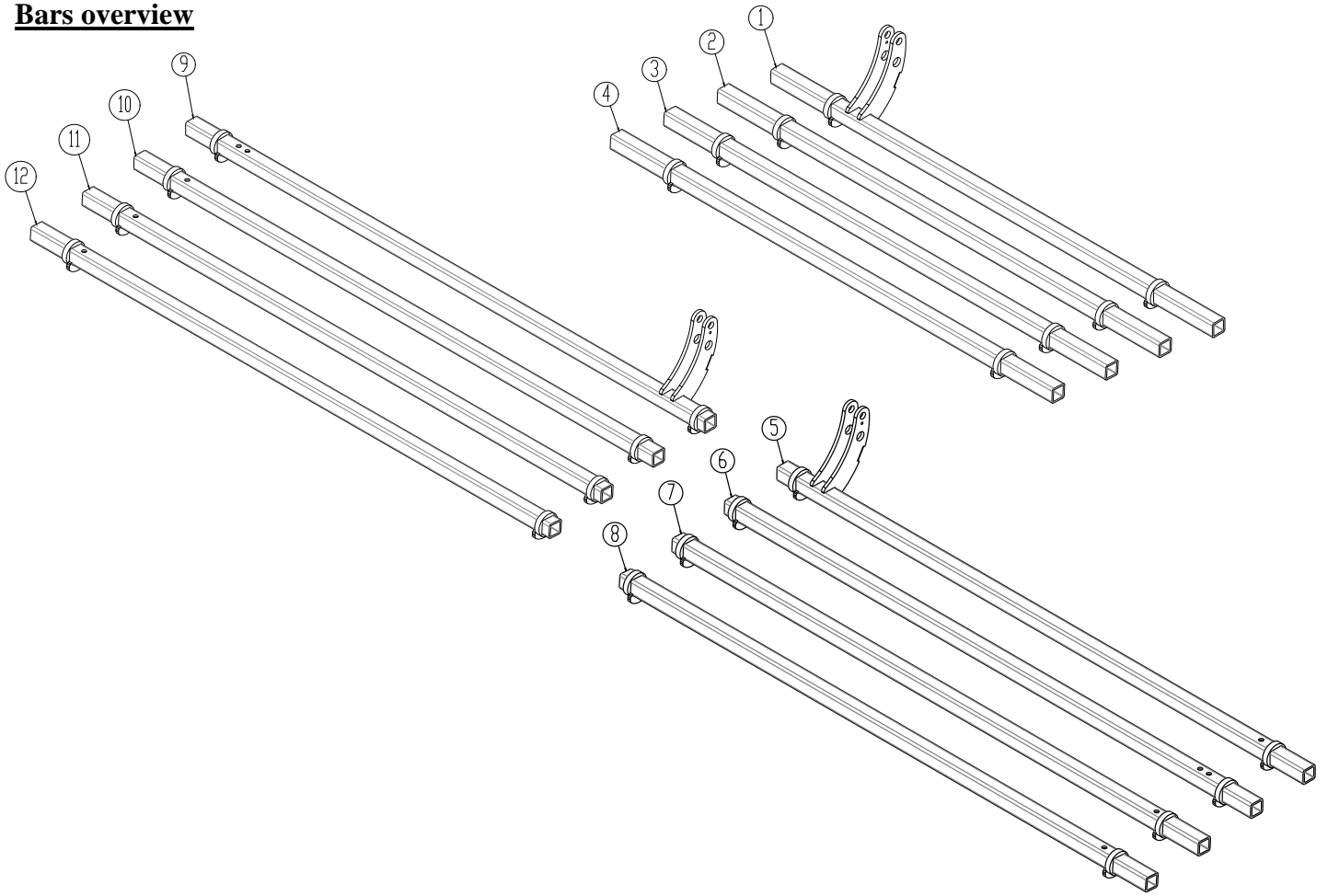
Side section, links 9,0-10,0m



Pos.	Part no.	Description	9m	10m
1	1275640	Side section left	1	1
1	1275641	Side section right (not shown)	1	1
2	690113020	Nut M24 fzv	4	4
3	0236360	Bolt M24x65 8.8 fzb	4	4
4	690200060	Cylinder 70/40-500 ϕ 30/ ϕ 30	3	3
5	675170000	Support wheel (for spare parts look at next chapter)	4	4
6	675170173	Holder for extension bars left	1	1
6	675170167	Holder for extension bars right	1	1
7	675170169	Mounting plate for holder	2	2
8	1275773	Bracket for holders, right	1	1
8	1275851	Bracket for holders, left	1	1
9	0235340	Bolt M12x30 8.8 fzb	4	4
10	0235440	Bolt M12x80 8.8 fzb	4	4
11	0272270	Facet washer 12 mm	16	16
12	690110406	U-bolt M18x150x100x150	4	4
13	0272300	Facet washer 18 mm	8	8
14	0264100	Lock-nut M18	8	8
15	0235340	Bolt M12x30 8.8 fzb	6	6
16	630532600	Lock bushing for pin head	6	6
17	0264070	Lock-nut M12	8	8
18	1275779	Spacer console	4	4
19	69430107G	Pin ϕ 30 L=107	3	3
20	69430090G	Pin ϕ 30 L=90	3	3
21	69430145G	Pin ϕ 30 L=145	8	8
22	690302008	Top-Link M22 L=270-360	9	9
23	1275670	Extension bar 50 cm		8
24	1275651	Bar left no. 1	1	1
25	633055609	Tine ϕ 16 complete (for spare parts look at page 19)	104	120
26	1275143	Bar holder	24	24
27	1275365	Sihm plates 15 mm	10	10
28	1275370	Link connector omplete	18	18
29	1275367	Mounting plate for link connector	18	18
30	1275369	Horn for link connector	18	18
31	0264070	Lock nut M12 fzb DIN985	72	72
32	0272270	Facet washer 12mm fzb DIN125B	144	144
33	690101105	Bolt M12x40 8.8	72	72
34	690117005	Facet washer 20 mm	36	36
35	0264110	Lock nut M20	18	18
36	690103153	Bolt M20x110 8.8 fzb	18	18

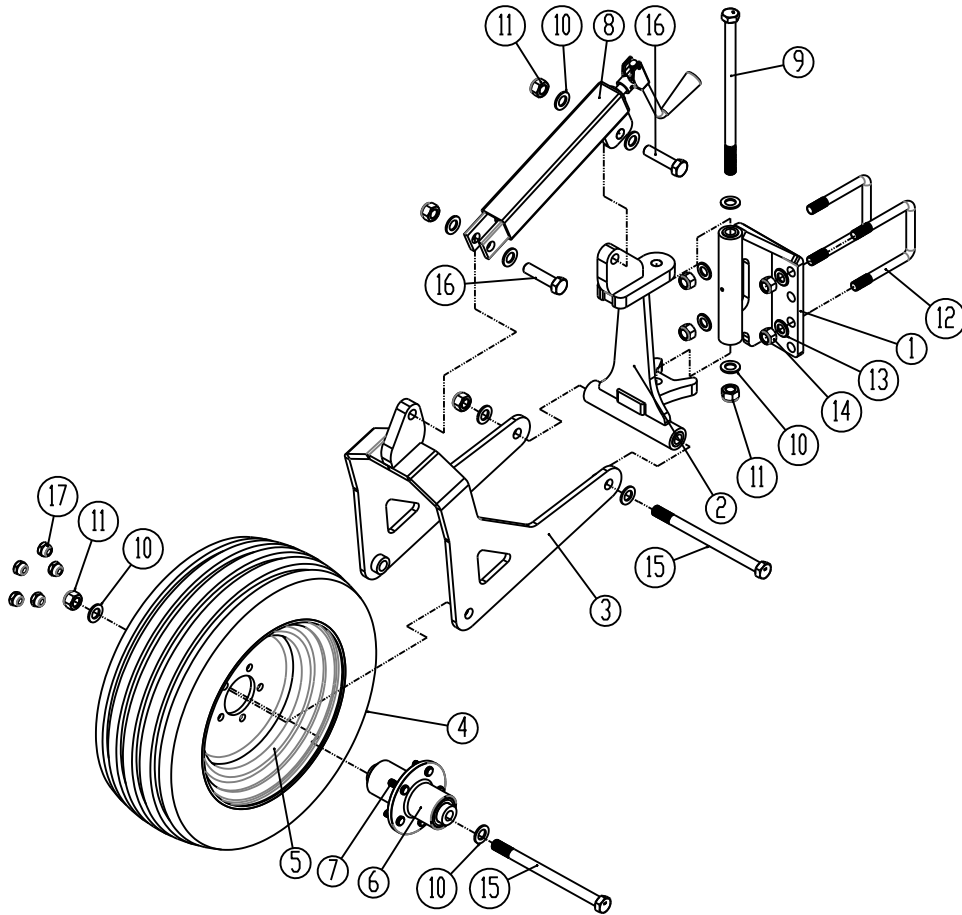


Bars overview



Pos.	Part no.	Description	9m	10m
1	1275621	Bar 1 middle	1	1
2	1275622	Bar 2 middle	1	1
3	1275623	Bar 3 middle	1	1
4	1275624	Bar 4 middle	1	1
5	1275651	Bar 1 left	1	1
6	1275652	Bar 2 left	1	1
7	1275653	Bar 3 left	1	1
8	1275654	Bar 4 left	1	1
9	1275655	Bar 1 right	1	1
10	1275656	Bar 2 right	1	1
11	1275657	Bar 3 right	1	1
12	1275658	Bar 4 right	1	1

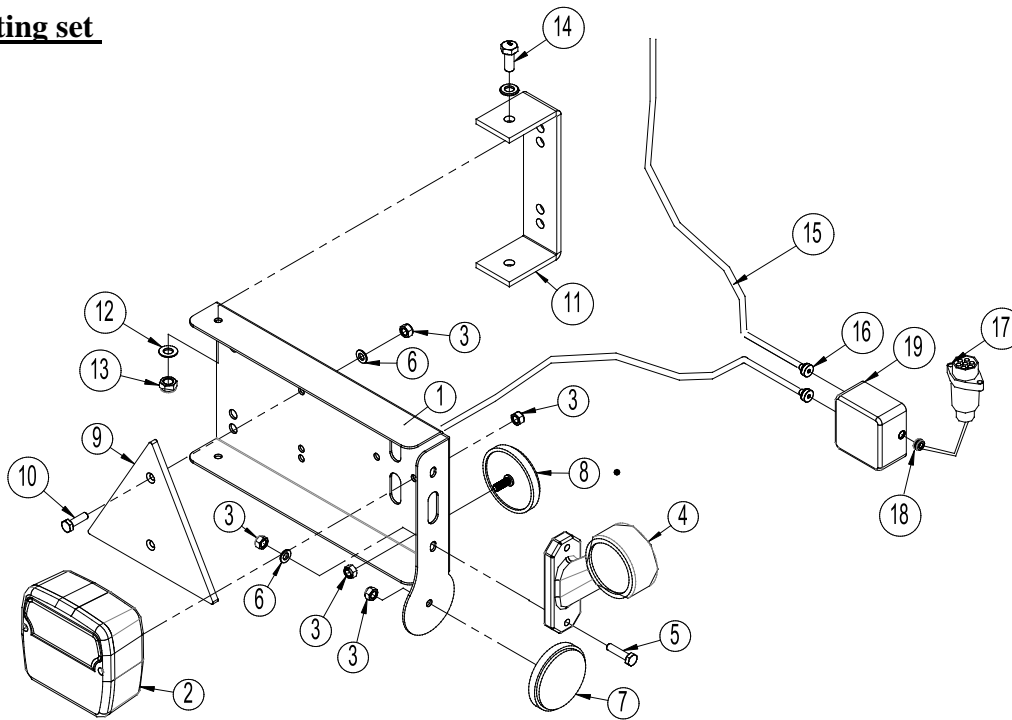
Support wheel



Pos.	Part no.	Description	3m – 4m - 5m – 6m
1	675170015	Mounting bracket	1
2	675170014	Turnable console	1
3	675170013	Wheel suspension	1
4	0395630	Tyre 200/60 – 14,5” 10 ply	1
5	0395610	Rim 200/60 – 14,5” 5/80/115 w/valve protection	1
6	690141020	Hub for wheel 5-M12/80-115	1
		Bearing 6203 RS	2
	690141320	Wheel w/hub complete	1
7	0396460	Bolt for hub M18x1,5 L=49	5
8	690304105	Spindle for adjustment	1
9	0236320	Bolt M20x360 8.8	1
10	0272310	Facet washer Ø20	10
11	0264110	Safety nut M20	5
12	690110404	U-bolt M18x100x100x100	2
13	0272300	Facet washer Ø18	4
14	0264100	Safety nut M18	4
15	0236315	Bolt M20x280 8.8	2
16	0236180	Bolt M20x90 mm, 8.8 DIN931 fzb	2
17	690141116	Hub nut M18x1,5	5



LED - Lighting set



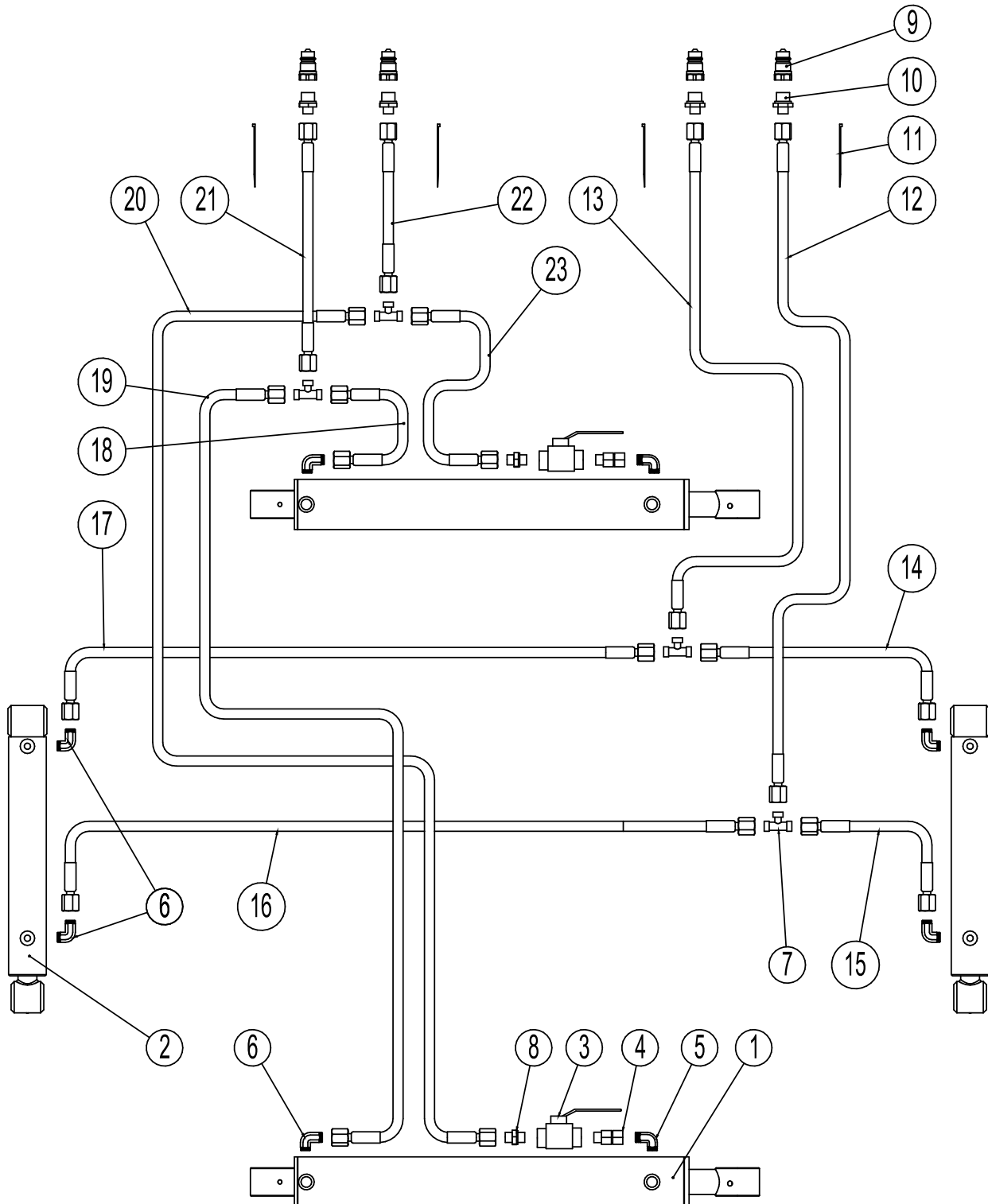
Pos.	Part no.	Description	Quantity
1	7357505	Lightbox (L)	1
	7357508	Lightbox (R)	1
2	7357504	Rear light	2
3	0264030	Locking nut M5	16
4	7357507	Marking lights (L)	1
	7357509	Marking lights (R)	1
5	0234340	Bolt M5x25	4
6	0272240	Facet plate Ø5	8
7	0656240	Reflex, yellow	2
8	0656250	Reflex, white	2
9	0521030	Reflex, red	2
10	0234330	Bolt M6x20	4
11	7357516	Bracket	2
12	0272250	Facetplate Ø8	16
13	0264050	Locking nut M8	8
14	0234750	Bolt M8x20	4
15	690160080	Cable 5 x 1mm ² (Inform length when ordering spare part)	
16	7357545	Rutaseal nipple M20 8-12mm Grey RAL7001	2
17	690160070	Plug 7 poles DIN 72 577 – ISO 1724	1
18	7357546	Rubberbushing Nr. 38A Ø10/3 black	1
19	0520492	Junction box 105x105x60	1

Note: Check number and measurements of all cables before ordering the spare parts.



Hydraulic

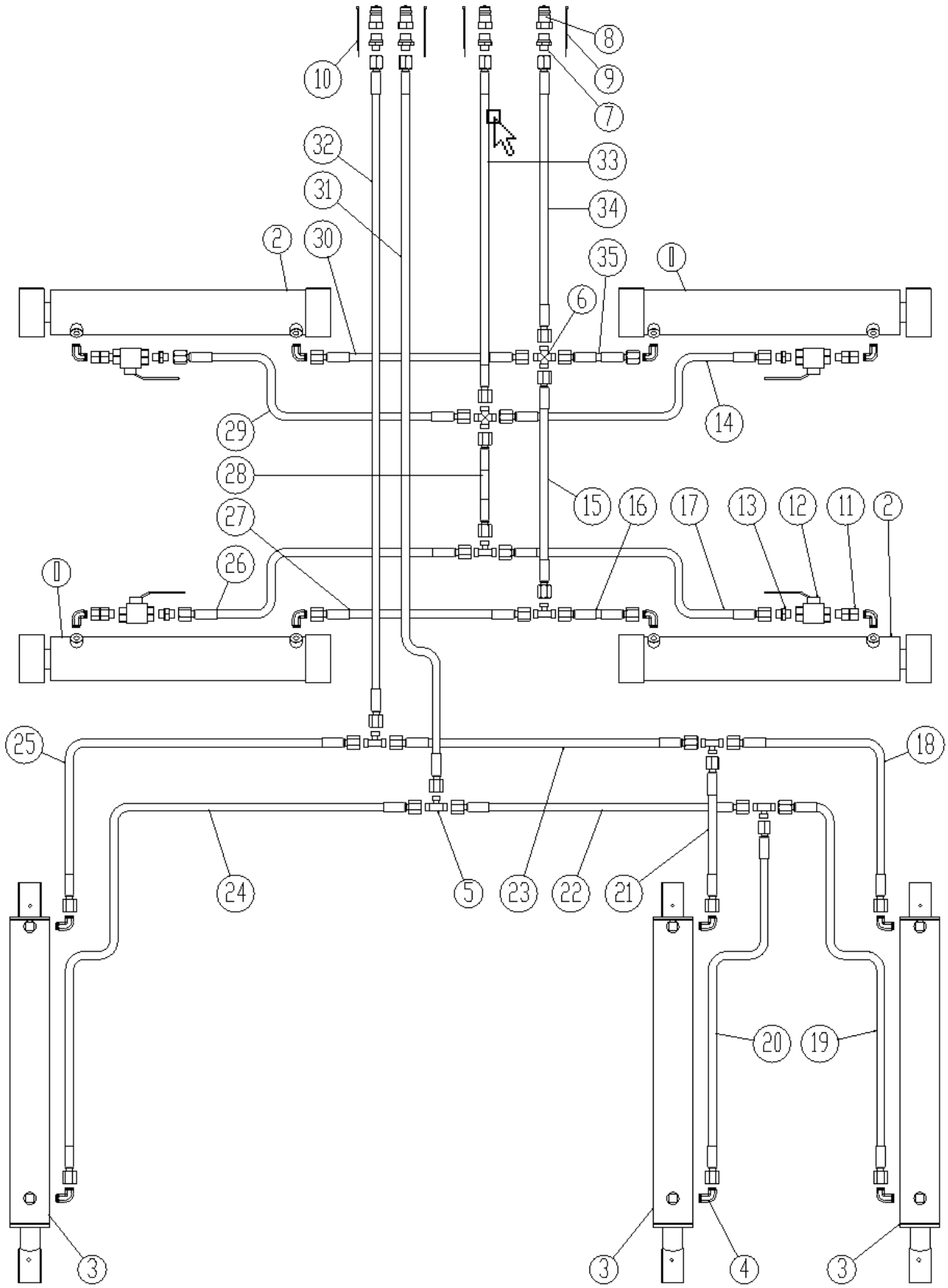
Hydraulic 4,0 - 5,0 - 6,0 - 7,0 - 8,0m



Pos.	Part no.	Description	7,0 + 8,0m
1	690200060	Cylinder 70/40 x 500	2
2	1275023	Cylinder 50/30 x 250	2
3	0442350	Ballvalve 3/8"	2
4	690203130	Fitting adjustable 12 mounted w/ O-ring	2
5	690203106	Fitting 90° 12-3/8" BSP	2
6	690203006	Fitting 90° 10-3/8" BSP	6
7	690203015	Connector T10	4
8	0446751	Fitting straight Ø10 x 3/8"	2
9	0444020	Quick coupling 1/2", male	4
10	0446752	Fitting straight Ø10 x 1/2"	4
11	-	Straps, 2 pc. green, 2 pc. blue	4
12	690201033	Hydraulic hose 1/4" L = 2500 mm	1
13	690201033	Hydraulic hose 1/4" L = 2500 mm	1
14	0454250	Hydraulic hose 1/4" L = 1010 mm	1
15	0454250	Hydraulic hose 1/4" L = 1010 mm	1
16	0454250	Hydraulic hose 1/4" L = 1010 mm	1
17	0454250	Hydraulic hose 1/4" L = 1010 mm	1
18	0454211	Hydraulic hose 1/4" L = 710 mm	1
19	690201033	Hydraulic hose 1/4" L = 2500 mm	1
20	0454645	Hydraulic hose 1/4" L = 2300 mm	1
21	0454591	Hydraulic hose 1/4" L = 2000 mm	1
22	0454591	Hydraulic hose 1/4" L = 2000 mm	1
23	0454211	Hydraulic hose 1/4" L = 710 mm	1



Hydraulic 9,0 - 10,0m



Pos.	Part no.	Description	7,0 + 8,0m
1	690200300	Cylinder 80/40x400 ϕ 30/ ϕ 30 45° L	2
2	690200301	Cylinder 80/40x400 ϕ 30/ ϕ 30 45° R	2
3	690200060	Cylinder 70/40 x 500	3
4	690203006	Fitting, straight 10-3/8" BSP	14
5	690203015	Connector T10	6
6	6902030189	4-way connector ϕ 10	2
7	0446752	Fitting, straight ϕ 10 x 1/2"	4
8	0444020	Quick coupling 1/2", male	4
9	-	Straps, blå (folding)	2
10	-	Straps, grønne (tine angel)	2
11	690203130	Fitting adjustable 12 mounted w/ O-ring	4
12	0442350	Ballvalve 3/8"	4
13	0446751	Fitting, straight ϕ 10x3/8"	4
14		Hydraulic hose 1/4" L = x mm	1
15		Hydraulic hose 1/4" L = x mm	1
16		Hydraulic hose 1/4" L = x mm	1
17		Hydraulic hose 1/4" L = x mm	1
18		Hydraulic hose 1/4" L = x mm	1
19		Hydraulic hose 1/4" L = x mm	1
20		Hydraulic hose 1/4" L = x mm	1
21		Hydraulic hose 1/4" L = x mm	1
22		Hydraulic hose 1/4" L = x mm	1
23		Hydraulic hose 1/4" L = x mm	1
24		Hydraulic hose 1/4" L = x mm	1
25		Hydraulic hose 1/4" L = x mm	1
26		Hydraulic hose 1/4" L = x mm	1
27		Hydraulic hose 1/4" L = x mm	1
28		Hydraulic hose 1/4" L = x mm	1
29		Hydraulic hose 1/4" L = x mm	1
30		Hydraulic hose 1/4" L = x mm	1
31		Hydraulic hose 1/4" L = x mm	1
32		Hydraulic hose 1/4" L = x mm	1
33		Hydraulic hose 1/4" L = x mm	1
34		Hydraulic hose 1/4" L = x mm	1
35		Hydraulic hose 1/4" L = x mm	1

Notice: Check length of hoses before ordering new ones



as it looks
As good as it looks
As good as it looks
As good as it looks
As good as it looks



The design is subject to modification without notice.