

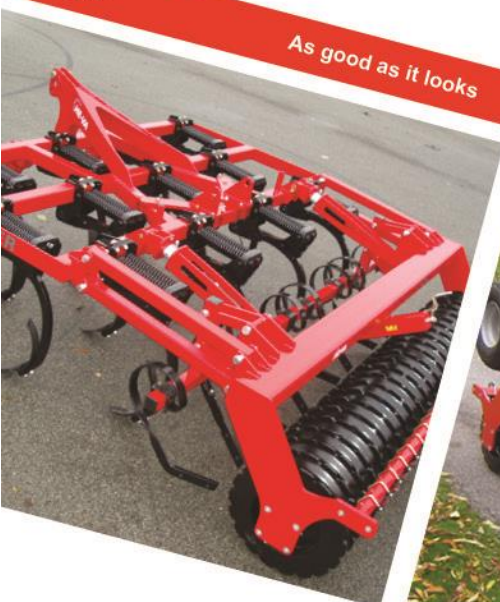
UK



Operating Instructions  
Spare Parts List  
Declaration of Conformity

as it looks

As good as it looks



As good as it looks



As good as it looks



As good as it looks

Warning: Before using the machine it is important to read the operation instructions.

## Triple-Tiller

Rigid: 3.0 - 3.5 (from machine no. 27710)



N. A. Christensensvej 34  
DK-7900 Nykøbing Mors  
Tel: 97724288  
Fax: 97722112  
[www.he-va.com](http://www.he-va.com)

## **Table of contents**

<b>EC- Declaration of Conformity .....</b>	<b>4</b>
<b>Machine description .....</b>	<b>5</b>
Range of application .....	5
Technical specifications.....	5
<b>Delivery check .....</b>	<b>6</b>
Preparation of the machine .....	6
<b>Safety instructions .....</b>	<b>7</b>
<b>Safety and instructions for hydraulics.....</b>	<b>8</b>
<b>Labels on the machine .....</b>	<b>9</b>
<b>Start-up.....</b>	<b>10</b>
General information.....	10
Attachment (rigid lift-mounted machines) .....	10
Uncoupling (rigid lift-mounted machines) .....	10
Attachment (rigid trailed machines) .....	10
Uncoupling (rigid trailed machines).....	10
<b>Settings and adjustment .....</b>	<b>11</b>
Roller depth adjustment.....	11
Scraper .....	11
<b>Maintenance .....</b>	<b>12</b>
Lubrication .....	12
<b>Spare parts .....</b>	<b>13</b>
Frame 3.0 and 3.5 m (rigid) .....	13
Harrow tine .....	14
Roller bar 3.0 and 3.5.m (rigid) .....	16
Roller 3.0 and 3.5 m (rigid) .....	18
Scraper .....	20
Tine track eradicator .....	22
<b>Extra equipment .....</b>	<b>24</b>
Eradicator disc .....	24
Wearing point (Quick change adapter).....	26
Lights .....	27
Trailed kit 3 – 3.5 m (rigid) .....	28
Edge equipment w/tine eradicator .....	30
Edge equipment w/disc eradicator.....	31
Support wheels.....	32
<b>Hydraulics .....</b>	<b>34</b>

Trailed kit 3 – 3.5 m (rigid) .....	34
<b>Notes.....</b>	<b>36</b>



## EC- Declaration of Conformity

in accordance with the EU Machinery Directive 2006/42/EC  
applicable as from December 29<sup>th</sup> 2009:

HE-VA ApS  
N. A. Christensensvej 34,  
DK-7900 Nykøbing Mors

hereby confirms that the following machine has been manufactured in accordance with the Council  
Directive 2006/42/EC.

The declaration comprises the following machine:

**Triple-Tiller**  
3,0 / 3,5 m (rigid)

No. \_\_\_\_\_

Nykøbing October 1st 2011

A handwritten signature in black ink, appearing to read "Villy Christiansen".

Villy Christiansen

The undersigned is furthermore authorized to compile technical documentation for the above machine.

## **Machine description**

### **Range of application**

HE-VA Triple-Tiller stubble harrow is available in 3,00 m and 3,50 m working width as rigid models and 4 m and 5 m working width with hydraulic folding (transport width 3,00 m). All models are available as lift-mounted or trailed with a row spacing of only 25 cm. The 3 rows of tines are mounted on a solid frame at a height of 85 cm and with 70 cm interval. The tine spacing is 75 cm.

Triple-Tiller is supplied standard with 75x12 mm reversible and adjustable wearing points, and the unique double-spring tine, preloaded for 455 kg. The "Quick change system" is available as extra equipment, and with the choice of chisel points or 260 mm wide wing shares. Behind the harrow section, the Triple-Tiller has disc eradicators – or the optional tine eradicator - both with centre spindle adjustment. There are 3 choices for rear-mounting: ø550 mm square tube roller, ø600 mm T-profile roller or ø600 mm V-profile roller.

### **Technical specifications**

<b>Model:</b>	<b>Lift-mounted</b>		<b>Trailed</b>	
Working width	3,0 m.	3,5 m.	3,0 m.	3,5 m.
Transport width	3,0 m.	3,5 m.	3,0 m.	3,5 m.
Machine length	3,6 m	3,6 m	6,7 m	6,7 m
Power requirement	100-200HP	120-240HP	100-200HP	120-240HP
No. of double-acting outlets	0	0	1	1
No. of tines	12 pcs.	14 pcs.	12 pcs.	14 pcs.

### **Weight:**

Square tube roller Ø550 mm	1850 kg.	2135 kg.	2430 kg.	2715 kg.
T-profile roller Ø600 mm	2200 kg.	2545 kg.	2780 kg.	3125 kg.
V-profile roller Ø600 mm	2470 kg.	2860 kg.	3050 kg.	3440 kg.

Wheels	11,5/80 x 15,3 – 10PLY
Tyre pressure	4 bar / 60 p.s.i.
Hydraulic pressure (minimum)	190 bar
Oil type	Hydro Texaco HD32
Voltage	12 volt
Working speed	6-12 km/h

Triple-Tiller is in conformance with DS/ISO 11001-1, three-point mounted.

## **Delivery check**

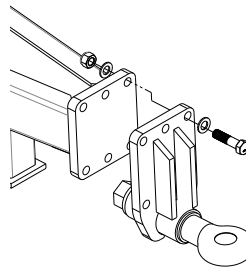
### **Preparation of the machine**

Check :

- the machine for any damages.
- for transport damage to the paint.
- hydraulic hoses for cuts and other damage. Check that none of the other hydraulics components were damages during transport.
- that the frame has not been damaged.
- that the transport wheels are secure and in good condition.
- air pressure level according to technical specifications.
- that all wearing points are intact.
- that all distance clips for depth adjustment are included.
- that all light systems are in working order (if any such system is mounted).
- 

Check the torque:

- wheel bolts 386 NM
- mounting plate for towing eye
- 6 pcs bolts 541 NM



Check machine functioning (tractor needed):

- raising – lowering – hydraulic unfolding
- spindle adjustable levelling discs / levelling tines
- spindle adjustable support wheels
- rollers / scrapers

## **Safety instructions**

Do not start-up the machine if there are persons in exposed positions\*\* within a hazardous area\*.

When persons are in exposed positions (e.g. in connection with adjustment, maintenance, attachment and uncoupling), the following conditions must be observed:

1. The machine must be lowered to firm ground.
2. The hydraulics must be relieved.
3. The tractor must be stopped and the key removed from the ignition switch.
4. The driver must ensure that no persons are staying in exposed positions during the operation.

\* Hazardous area: On and under the machine within a distance of 10 m from the machine.

\*\* Person in exposed position: Any person who is staying wholly or partly within a hazardous area.

Most accidents that happen in connection with the operation, transport and maintenance of machines are caused by non-compliance with the most elementary safety conditions.

Therefore it is vital that anybody working at the machine carefully complies with the safety instructions as well as other instructions applying to the machine.

The machine may only be operated, maintained and repaired by persons, who are familiar with this work and who are further familiar with the possible elements of danger with this particular machine.

**ATTENTION !! Rotary parts and loose clothes are a dangerous combination.**

**IMPORTANT !! In connection with the risk of parts falling down, it may endanger the lives of persons staying on the base frame of the machine, when it is operated attached to a tractor.**

## **Safety and instructions for hydraulics**

1. The maximum working pressure is 225 bar.
2. It is advisable to label the attachment parts at hydraulic connections between the tractor and the tool in order to eliminate incorrect operation!
3. When checking for hydraulic leaks, use suitable safety wear (eye protectors, gloves, etc.)  
High-pressure hydraulic oil may penetrate the skin and cause dangerous injuries.  
In case of injury, consult a doctor immediately. **RISK OF INFECTION!**
4. Before operating the hydraulics, lower the machine to firm ground. Relieve the hydraulics, stop the motor and remove the ignition key.
5. Check the hydraulic hoses on a regular basis, however, every six months as a minimum due to any cracks, wear and tear, etc. Replace any defective hoses immediately.

The life of hydraulic hoses is maximum 5 years.

New hydraulic hoses must meet the manufacturer's requirements.

### **TRANSPORT ON PUBLIC ROADS:**

Check before transport on public roads that the attachment of the machine at the tractor is in accordance with the local rules and regulations in force (permitted total weight, permitted axle load, transport width, lights, warning signs, brakes etc.).

### **FRONT AXLE LOAD:**

After the attachment of the machine and at maximum load, the driving properties of the tractor must be ensured. Check that the front axle is sufficiently loaded. As a minimum, the front axle load must be 20% of the tractor weight. Permitted axle load and permitted total weight for the tractor must always be observed.

**NB! The driving, controlling and braking properties are affected by the attached machine combination.**



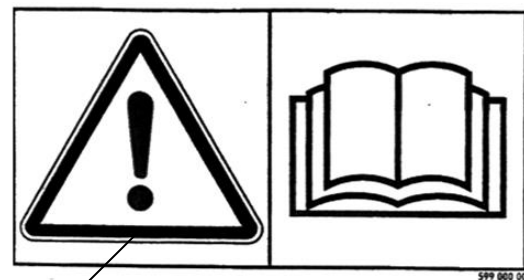
## Labels on the machine

There are several labels on the machine advising on **safety precautions** and practical use.

Please study these instructions carefully, and make sure the operator are familiar with all labels and safety instructions. Keep the labels clean and legible – if not, they should be replaced.



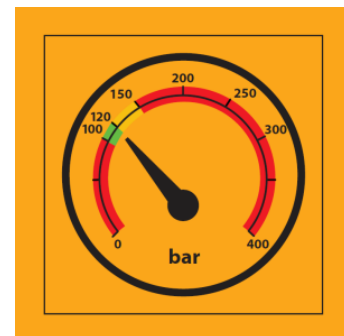
A



B



C



D

### Explanation:

- A** Plate with number and year of manufacture.
- B** Study the safety instructions carefully before operating the machine, and observe all safety precautions.
- C** Tighten up all bolts regularly.  
If this is not done, our warranty obligations will no longer apply.
- D** Ensure correct hydraulic pressure for release system.

## **Start-up**

### **General information**

Rigid models require 0 – 1 double-acting oil outlets (see technical specifications p. 5)

### **Attachment (rigid lift-mounted machines)**

1. Reverse the tractor to the machine and attach it.
2. Lift the machine to maximum transport height.

### **Uncoupling (rigid lift-mounted machines)**

1. Lower the machine onto level, firm ground, and release all hydraulic hoses.
2. Lower the support leg.
3. The machine may now be uncoupled.

### **Attachment (rigid trailed machines)**

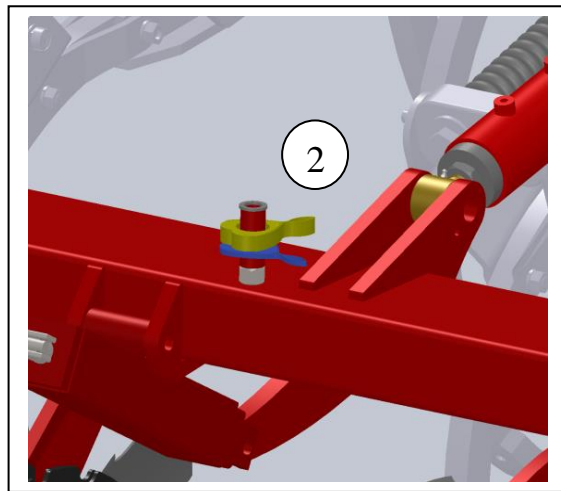
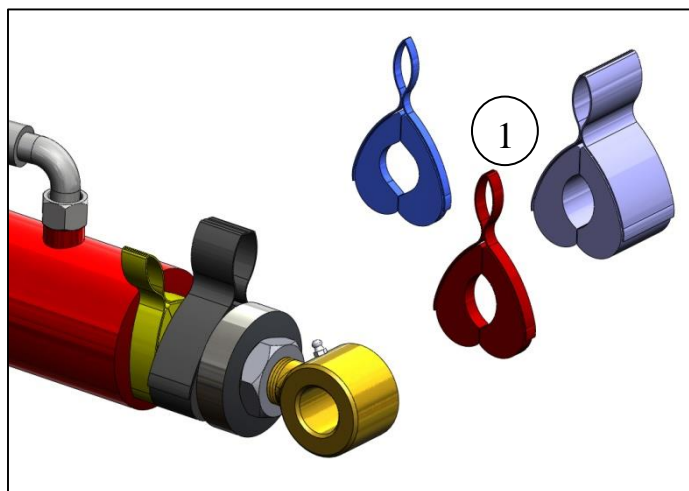
1. Reverse the tractor to the machine.
2. Fasten all hydraulic hoses on the tractor outlets.
3. Apply pressure to the drawbar-wheel cylinder until the drawbar reaches the right height.
4. Reverse the tractor and attach the machine.
5. Lift the machine to maximum height and lift the support leg.

### **Uncoupling (rigid trailed machines)**

1. Lower the machine onto level, firm ground.
2. Lower the support leg.
3. Adjust the drawbar-wheel cylinder (red), so that the drawbar pin is loosened
4. The machine may now be uncoupled.
5. Move the tractor slightly forward to release all hydraulic hoses.

## Settings and adjustment

### Roller depth adjustment



The machine is delivered including coloured distance clips (pos. 1)

These clips are easily removed by hand to adjust the working depth of the roller.

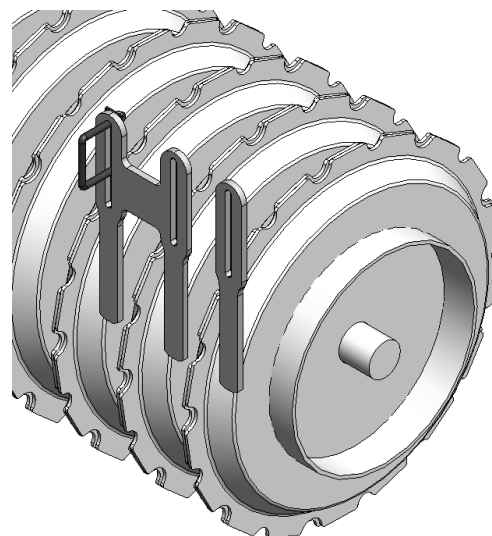
When not in use, excess clips may be put on the tube (pos. 2).

### Scraper

Triple-Tiller is fitted with scrapers of special steel in between the rings of the V-profile roller.

Check their centering daily, so they do not wear unnecessarily, and to ensure optimal effect.

The correct height adjustment is 1-2 mm from the bottom of the roller.



## Maintenance

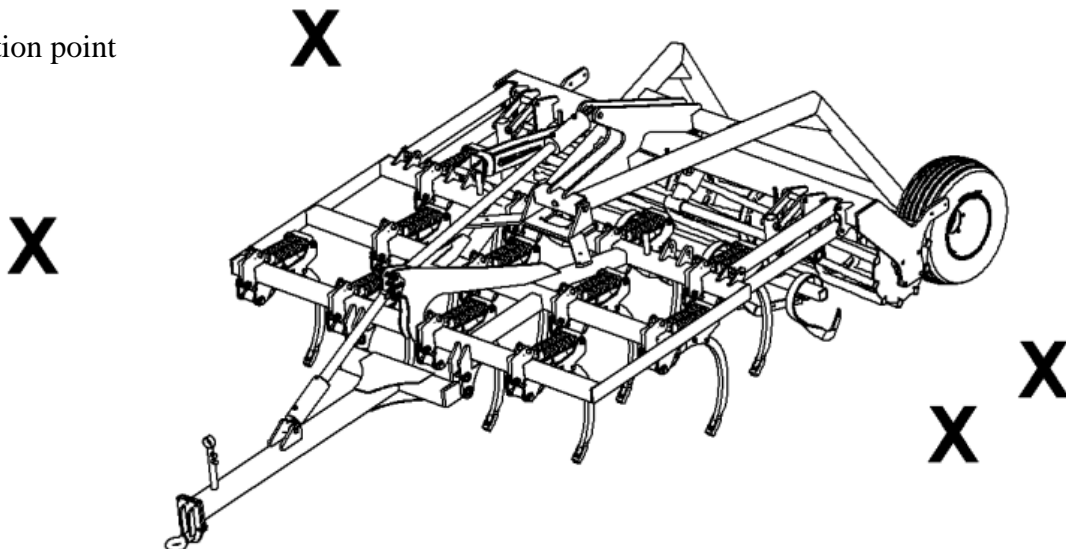
- After the first 10 hours of operation, all bolts must be tightened, (see torque diagram, page 9). Hoses, fittings and cylinders must be checked for possible leaks and further tightened.
- Check regularly that all bolts are tightened.
- After the season all lubricating points must be lubricated, then wash and lubricate the machine. Do not use high-pressure water directly on ball bearings. After washing it, you may spray the machine with a rust preventive oil.

### Lubrication

When lubricating, maintaining and repairing the Triple-Tiller, always lower the machine, brake the tractor and stop the engine.

The typical lubricating points are: by the roller, spindle, side section and the arms of the roller bar. The lubricating points must be lubricated after 10 hours of operation, and before/after cleaning in order to drive out any water or dirt. The lubricating points are placed by movable parts, as well as by the ball bearings and cylinders.

**X** = Lubrication point

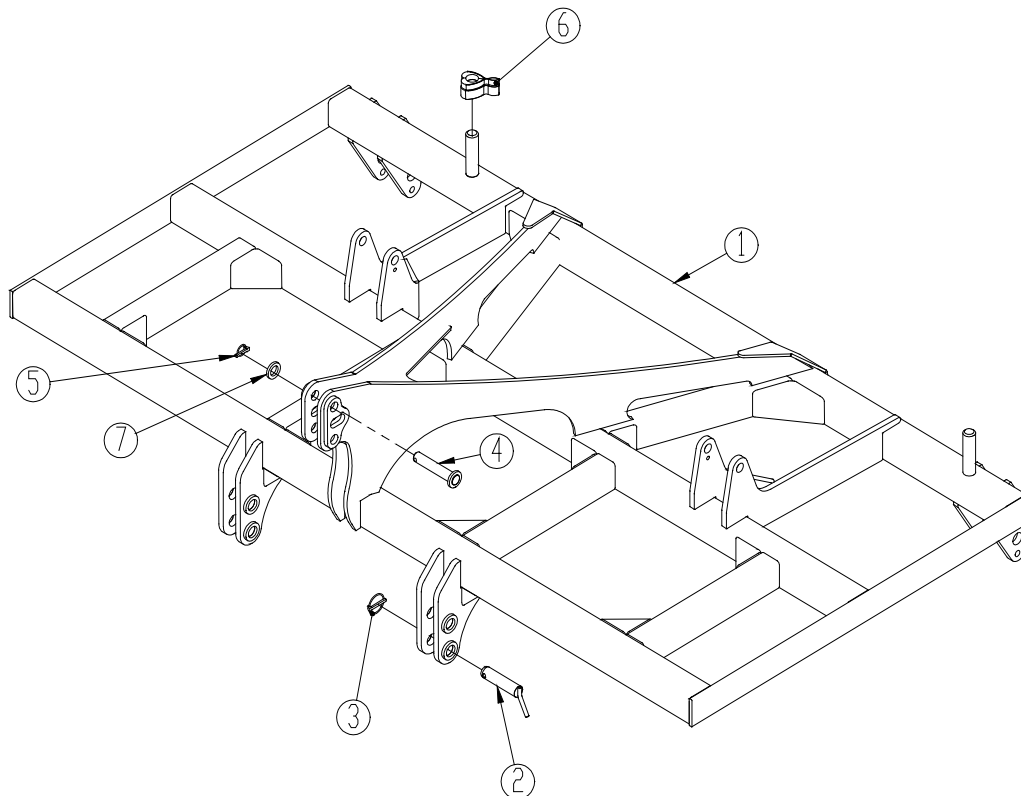


**Note!** The double density ball bearings in the roller should only be lubricated every 20 hours, and with 1-2 strokes so as not to press out the sealing rings.

**IMPORTANT!** The hydraulic system is filled with oil type Hydro Texaco HD32

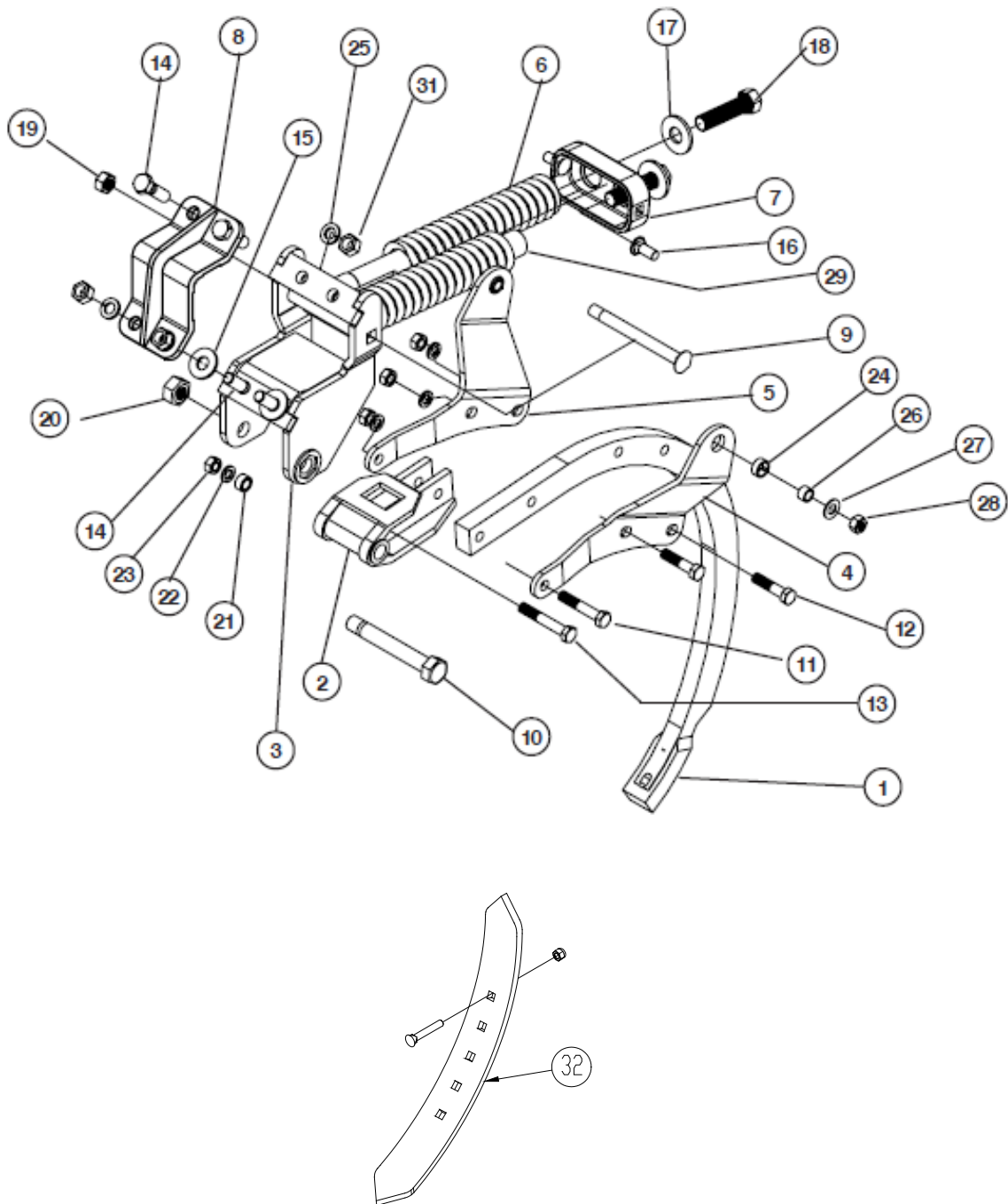
## Spare parts

### Frame 3.0 and 3.5 m (rigid)



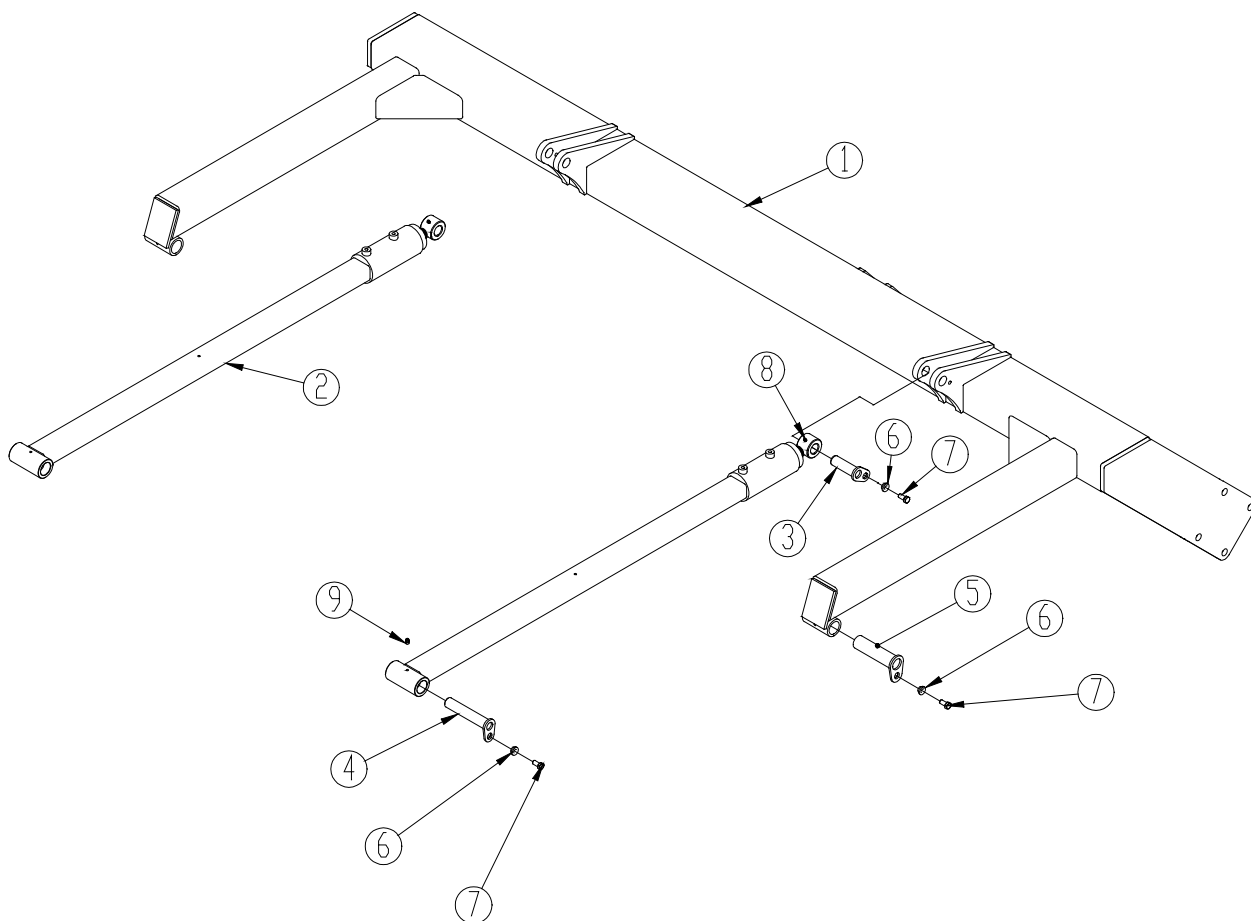
Pos.	Item no.	Designation	3 m	3.5 m
1	1160097	Frame	1	
1	1160149	Frame		1
2	1140600	Pin Ø37x150	2	2
3	0378650	Ring split Ø10x42	2	2
4	1140361	Pin Ø32x175	1	1
5	0378600	Ring split Ø11x40	1	1
6	690200664	Distance clip 6.2 mm, blue		
	690200665	Distance clip 9.4 mm, red		
	690200666	Distance clip 18.8 mm, yellow		
	690200667	Distance clip 31.6 mm, black		
	690200668	Distance clip 50.8 mm, silver		
7	1069950	Disc Ø33	1	1

## Harrow tine



Pos.	Item no.	Designation	No. per tine
1	0424601	Shank	1
2	0424602	Holder for shank	1
3	0424603	Tine attachment	1
4	0424604	Side plate for shank, Left	1
5	0424605	Side plate for shank, Right	1
6	0424606	Spring	2
7	0424607	Spring retainer	1
8	0424608	Clamping bracket	1
9	0424609	Carrier bolt 3/4NC-2A	1
10	0424610	Pivot bolt	1
11	0424611	Steel set screw 5/8NCx4	1
12	0424612	Steel set screw 5/8NCx2-3/4	2
13	0424613	Steel set screw 5/8NCx3-1/2	1
14	0424614	Steel set screw 3/4NCx2-1/4	4
15	0424615	Facet plate 3/4	2
16	0424616	Carrier bolt 5/8NCx1-1/2	2
17	0424617	Facet plate 1/1	2
18	0424618	Steel bolt 1NCx4	2
19	0424619	Steel nut 3/4	1
20	0424620	Steel nut 1/1	1
21	0424621	Distance bush 9/16x1	2
22	0424622	Facet plate 5/8	4
23	0424623	Steel nut 5/8	4
24	0424624	Bush	2
25	0424625	Facet plate 3/4	4
26	0424626	Bush	2
27	0424627	Facet plate 3/8	2
28	0424628	Steel nut 5/8	1
29	0424629	Spring bracket	2
31	0424619	Steel nut 3/4	2
32	0424330	Standard point incl. bolt and nut (left) <b>(8 pcs per machine 3,0m)</b>	1
32	0424340	Standard point incl. bolt and nut (right) <b>(4 pcs per machine 3,0m)</b>	1
32	0424330	Standard point incl. bolt and nut (left) <b>(9 pcs per machine 3,5m)</b>	1
32	0424340	Standard point incl. bolt and nut (right) <b>(5 pcs per machine 3,5m)</b>	1
	0424300	Complete tine without/point (pos. 1-31)	

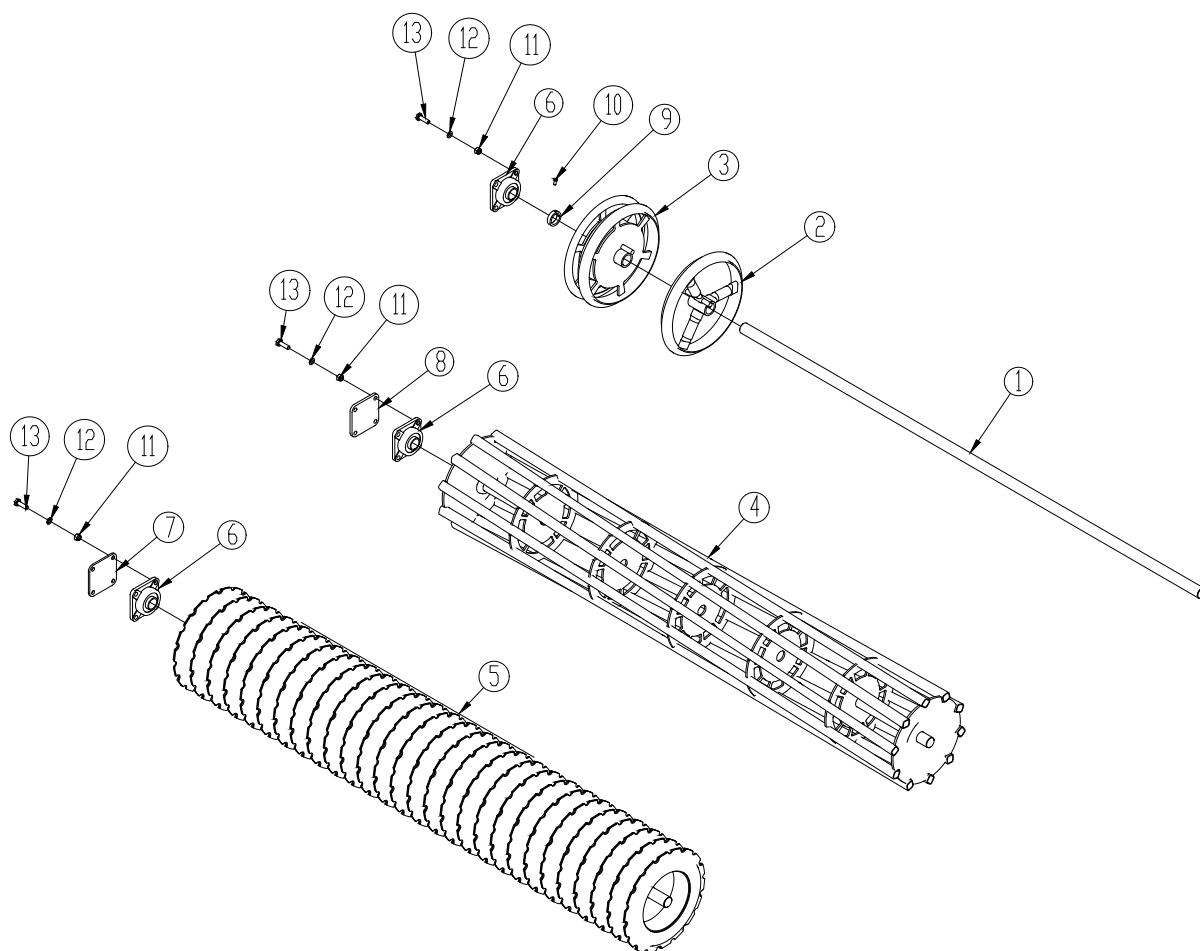
### Roller bar 3.0 and 3.5.m (rigid)





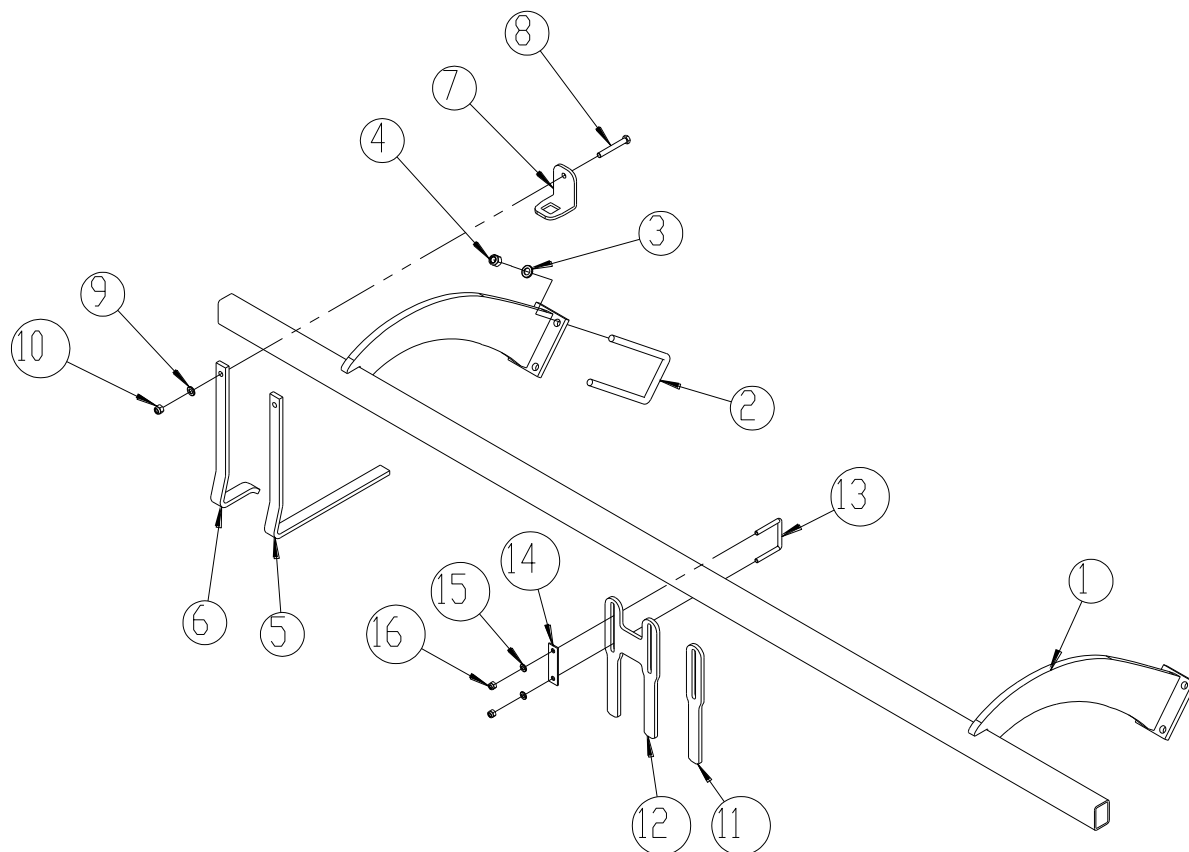
Pos.	Item no.	Designation	3 m	3.5 m
1	1160103	Levelling bar	1	
1	1160403	Levelling bar		1
2	1160486	Cylinder	2	2
3	69430095G	Pin Ø30 L=95	2	2
4	1160155	Pin Ø30 L=165	2	2
5	69440165G	Pin Ø40 L=165	2	2
6	630532600	Lock bush for pin head	6	6
7	0235330	Bolt M12x25mm 8.8	6	6
8	690136001	Lubricating nipple M6	2	2
9	0432510	Lubricating nipple M8	2	2

### Roller 3.0 and 3.5 m (rigid)



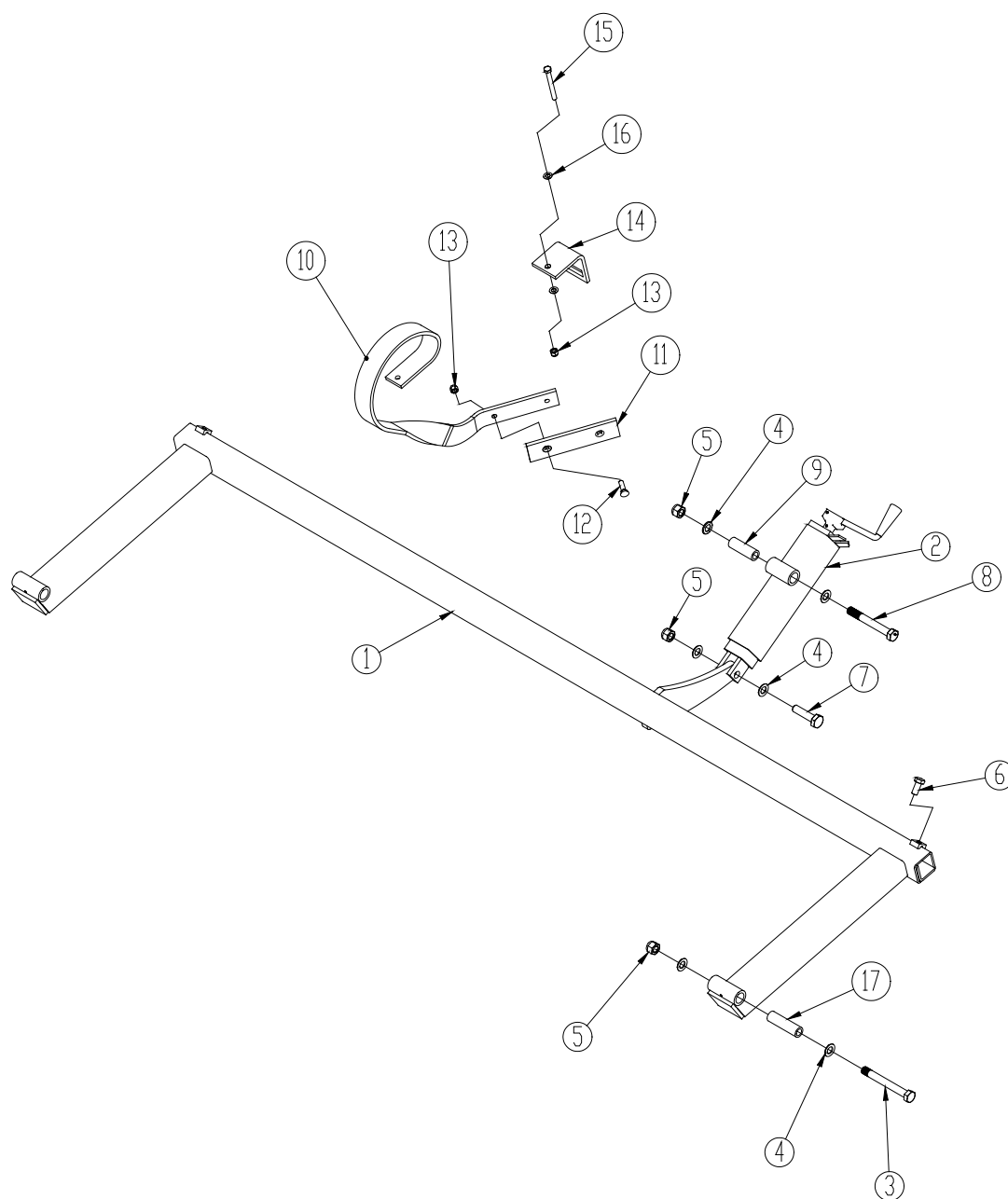
Pos.	Item no.	Designation	3 m	3.5 m
1	678612935	Axle Ø60x2935	1	
1	678613435	Axle Ø60x3435		1
2	1069111	T-profile ring	20	24
3	1048100	T-profile ring – wide+narrow ring	2	2
4	1048240	Square tube roller Ø550	1	
4	1048280	Square tube roller Ø550		1
5	630916300	V-profile roller (to machine no. 29175)	1	
	1160470	V-profile roller (from machine no. 29176)	1	
	630916350	V-profile roller (to machine no. 29175)		1
	1160480	V-profile roller (from machine no. 29176)		1
6	690140808	Flange bearing Ø60 – UCF 312	2	2
7	1160201	Bearing support Ø60 ( V-profile roller)	2	2
8	1160202	Bearing support Ø60 (square tube roller)	2	2
9	645000411	Shim	2	2
10	0235040	Steel set screw M10x25	2	2
11	0264110	Self-locking nut M20	8	8
12	0272310	Facet plate M20	8	8
13	0236140	Bolt M20x65 8.8	8	8

# Scraper



Pos.	Item no.	Designation	3 m	3.5 m
1	1160433	Scraper bar (V-profile roller) (to machine no. 29175)	1	
	1160431	Scraper bar (V-profile roller) (to machine no. 29175)		1
	1160566	Scraper bar (V-profile roller) (from machine no. 29176)	1	
	1160567	Scraper bar (V-profile roller) (from machine no. 29176)		1
	1160536	Scraper bar (T-profile roller)	1	
	1160537	Scraper bar (T-profile roller)		1
2	690110106	U-bolt M16x200x100x200	4	4
3	0272290	Facet plate Ø16	8	8
4	0264090	Self-locking nut M16	8	8
5	0422450	Scraper long (T-profile roller)	22	23
	0422450	Scraper long (V-profile roller)(from machine no. 29176)	19	22
6	0422452	Scraper short (T-profile roller)	2	2
	0422452	Scraper short (V-profile roller)(from machine no.29176)	2	2
7	630938522	Clamp 50x70 f/scraper 32/21	24	25
8	0235450	Bolt M12x90mm	24	25
9	0272270	Facet plate Ø12	24	25
10	0264070	Self-locking nut M12	24	25
11	630938505	Scraper single (v-profile roller) (to machine no. 29175)	1	1
12	630938506	Scraper double (v-profile roller) (to machine no. 29175)	11	13
13	690110025	U-bolt M10x50x70x50mm	23	27
14	630937517	Clamping plate	23	27
15	0272260	Facet plate Ø10	46	54
16	0264060	Self-locking nut M10	46	54

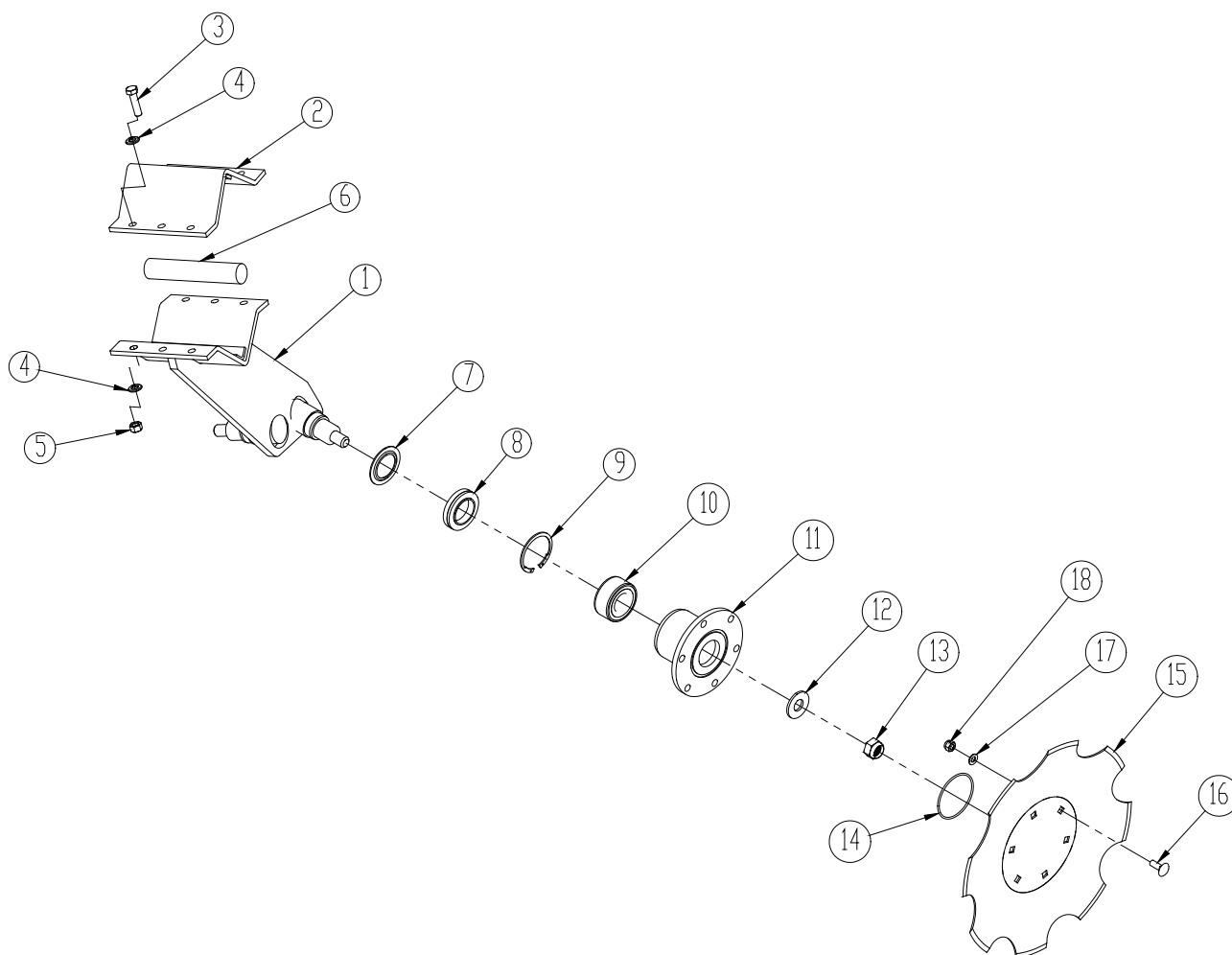
## Tine track eradicator



Pos.	Item no.	Designation	3 m	3.5 m
1	1160387	Levelling bar	1	
1	1160400	Levelling bar		1
2	1160325	Spindle	1	1
3	0236260	Bolt M20x170 8.8	2	2
4	0272310	Facet plate Ø20	8	8
5	0264110	Self-locking nut M20	4	4
6	690103124	Bolt M16x35MM 8.8	2	2
7	0236170	Bolt M20x80MM 8.8	1	1
8	690103188	Bolt M20x160mm 8.8	1	1
9	675101006	Bush BK 30x5 L=89	1	1
10	0422420	Levelling tine at wearing part, left (shown)	4	4
10	0422421	Levelling tine at wearing part, right	4	4
11	0422424	Wearing part 70x10	8	8
12	0381260	PB-bolt M12x35 10.9	16	16
13	0264070	Self-locking nut 12	26	26
14	0422375	Tine holder, tine 60x10, bar 70x70	8	8
15	0235470	Steel bolt M12x110Mmm 8.8	8	8
16	0272270	Facet plate M12	16	16
17	1160560	Bush Ø30x5mm	2	2

## Extra equipment

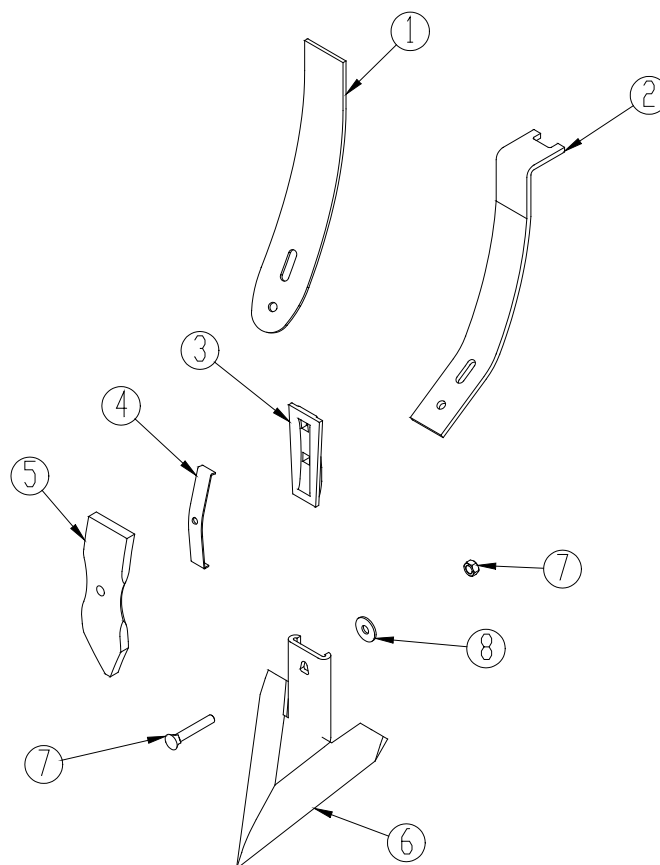
### Eradicator disc





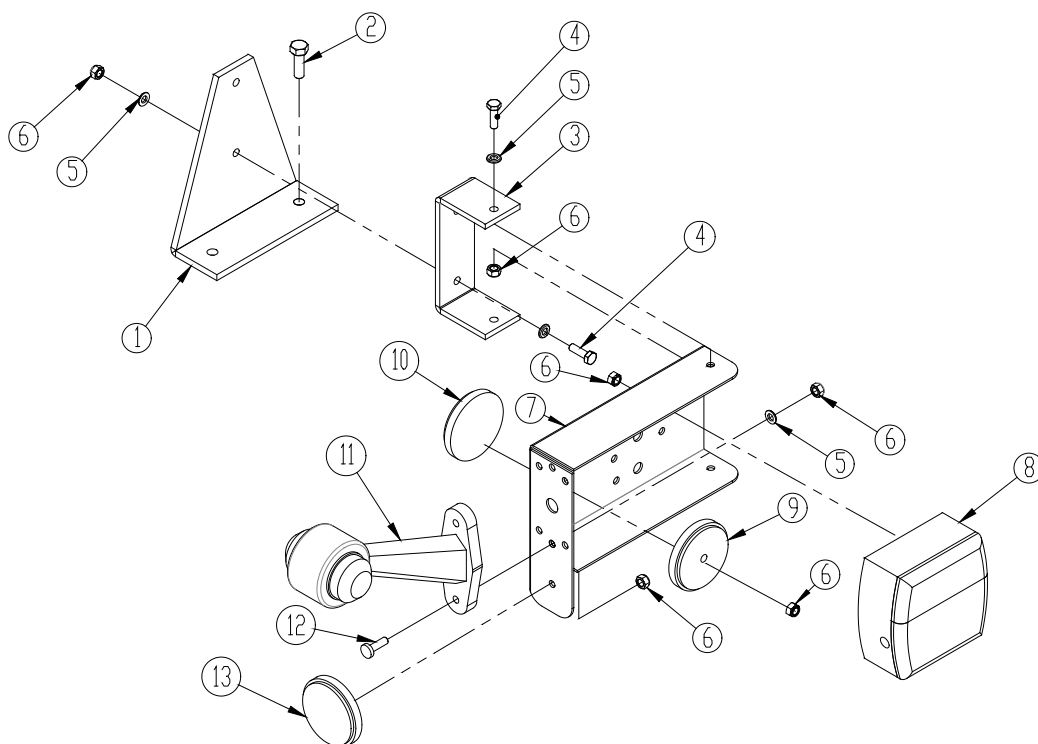
Pos.	Varenr.	Betegnelse	3m.	3,5m.
Pos.	Item no.	Designation	3m.	3,5m.
1	1139870	Carrier arm (R + L)	3	3
	1139871	Carrier arm (R)	1	1
	1139872	Carrier arm (L)	1	1
2	30949046	Clamping plate	5	5
3	690103091	Steel bolt M12x45 10.9	30	30
4	0272270	Facet plate M12	60	60
5	0264070	Self-locking nut M12	30	30
6	690210710	Rubber cord	20	20
7	630949019	Disc Ø45/71,7	8	8
8	690140651	Seal Ø72	8	8
9	0379250	Seeger circlip ring I Ø72	8	8
10	690140201	Bearing Ø35	8	8
11	30949030	Hub	8	8
12	690117062	Disc Ø20	8	8
13	0263000	Lock nut M20	8	8
14	0483730	O-ring Ø80/3	8	8
15	0427791	Serrated disc Ø400 with 6 holes	8	8
16	0248421	Carrier bolt M10x30	48	48
17	0272260	Facet plate Ø10	48	48
18	0264060	Self-locking nut M10	48	48
	1139860	Complete carrier arm (R +L)	-	-
	1139861	Complete carrier arm (R)	-	-
	1139862	Complete carrier arm (L)	-	-
	630949035	Repair outfit/conversion set incl. hub (no: 7 – 14)		

### Wearing point (Quick change adapter)



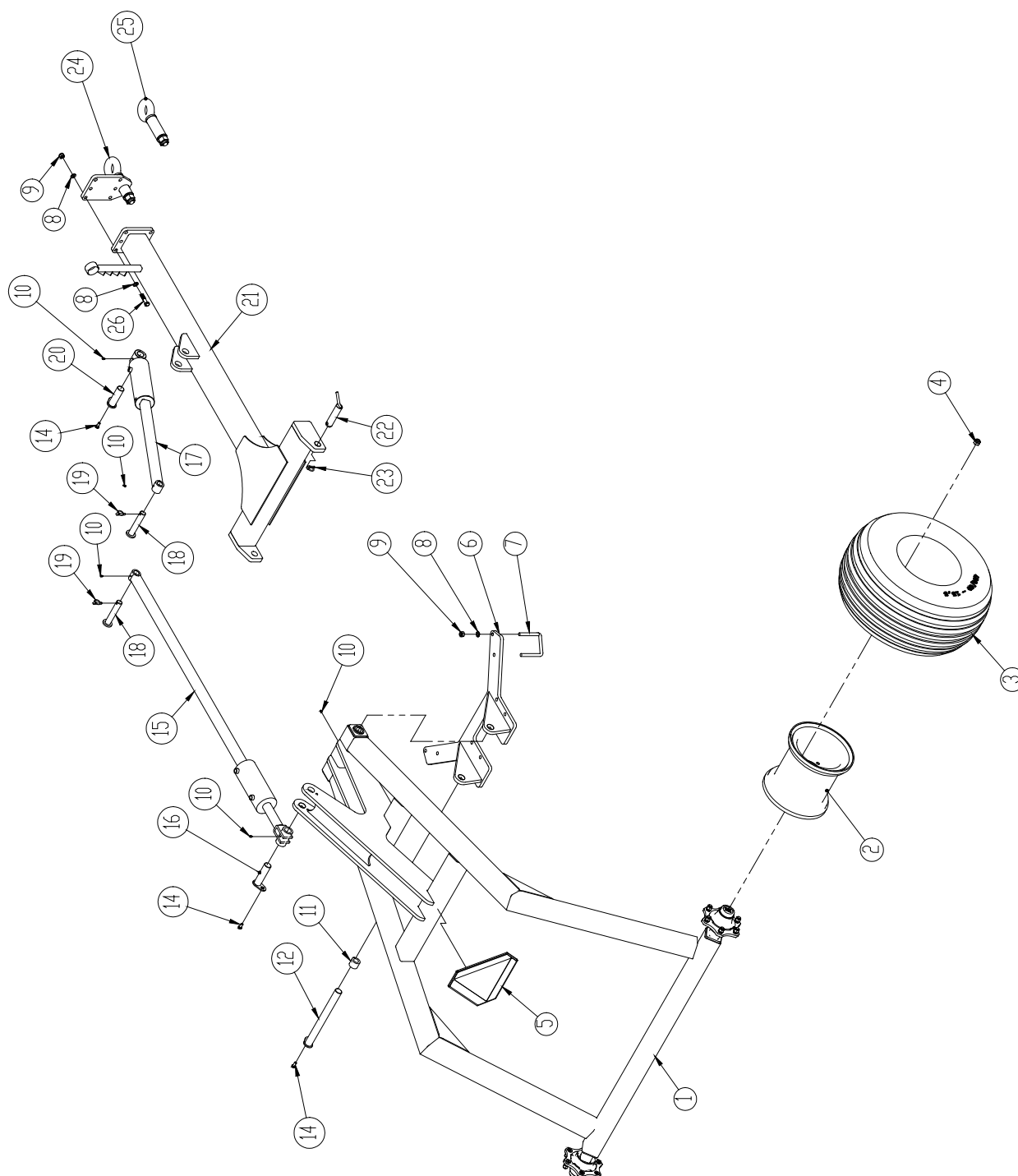
Pos.	Item no.	Designation	No. per tine
1	0424480	Twisted mould board (L) <b>(8 pcs per machine 3,0m)</b>	1
	0424490	Twisted mould board (R) <b>(4 pcs per machine 3,0m)</b>	1
	0424480	Twisted mould board (L) <b>(9 pcs per machine 3,5m)</b>	1
	0424490	Twisted mould board (R) <b>(5 pcs per machine 3,5m)</b>	1
2	1139890	Straight mould board	1
3	0424350	Adapter	1
4	0424360	Retaining spring	1
5	0424450	Chisel point 75 mm	1
6	0424402	Wing share 260 mm	1
7	0381300	PB-bolt M12x70 w/nut	1
8	0272620	Disc Ø13/37x3 mm	1

## Lights



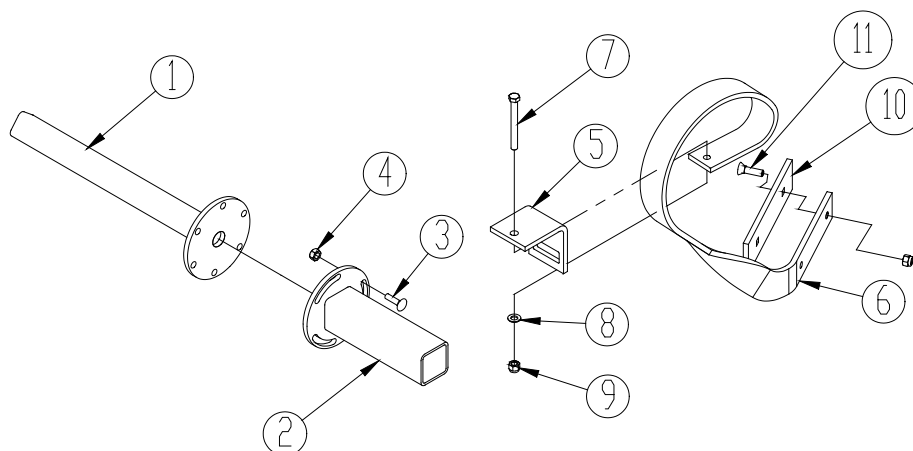
Pos.	Item no.	Designation	No.
1	30910110	Bracket	2
2	0230825	Screw Tapetite M8x25mm	4
3	30930110	Bracket	2
4	0234330	Set screw M6x20 mm	8
5	0272240	Facet plate Ø6	20
6	0264040	Self-locking nut M6	10
7	1043480	Light bracket (L)	1
	1043510	Light bracket (R)	1
8	0527000	Rear light (L)	1
	0527010	Rear light (R)	1
9	0656260	Reflector, red	2
10	0656250	Reflector, white	2
11	0527040	Marking lights	2
12	0243000	Machine screw M6x20 mm	4
13	0656240	Reflector, yellow	2

### Trailed kit 3 – 3.5 m (rigid)



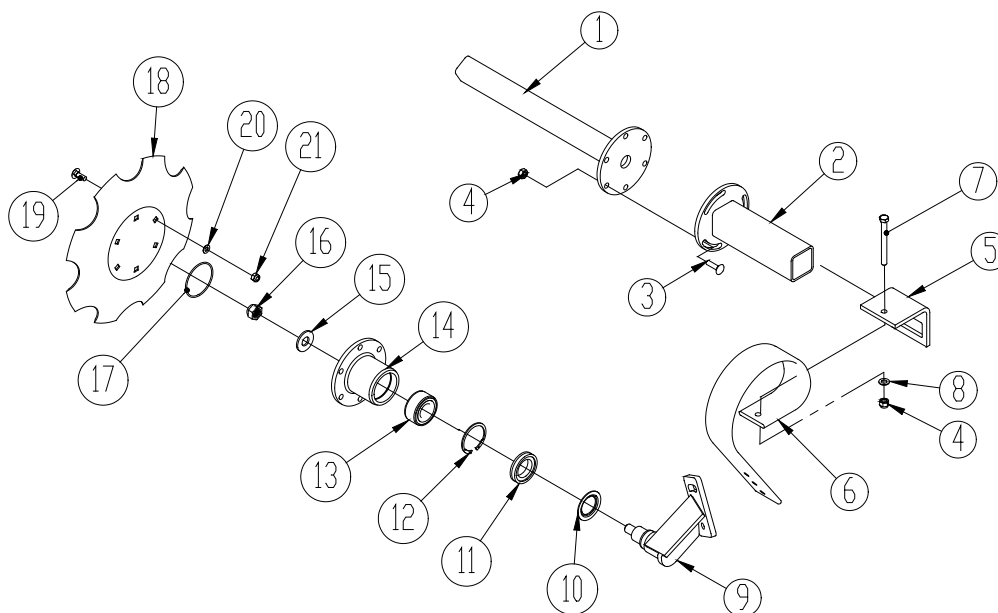
Pos.	Item no.	Designation	No.
1	1160182	Wheel frame	1
2	0396110	Wheel rim	2
3	0396130	Tyre 11,5/80 x 15,3	2
	0396100	Complete wheel	2
4	690141055	Hub nut M18x1,5	12
5	0521010	Warning triangle with bracket	1
6	1160119	Bracket	1
7	0382160	U-bolt M16 100x100	6
8	0272290	Facet plate M16	16
9	0264090	Self-locking nut M16	8
10	0432100	Lubricating nipple M6	2
11	0475330	Bush EG Ø50/40x40mm.	2
12	1160174	Pin Ø40x420	1
13	630532600	Bush Ø13	3
14	0235330	Steel set screw M12x25	3
15	1160178	Hydr. cylinder	1
16	1160172	Pin Ø40x145	1
17	1160414	Hydr. cylinder	1
18	1140361	Pin Ø30x175	2
19	0378600	Ring split Ø11x40	2
20	1145309	Pin Ø40x125	1
21	1160124	Towing bar	1
22	1140600	Pin Ø37x150	2
23	0378650	Ring split Ø10x42	2
24	630757028	Draw unit w/pivotal towing eye Ø50	1
25	690141211	Towing eye Ø50, pivotal – for welding	-
26	690103130	Bolt M16x70 10.9	1

### Edge equipment w/tine eradicator



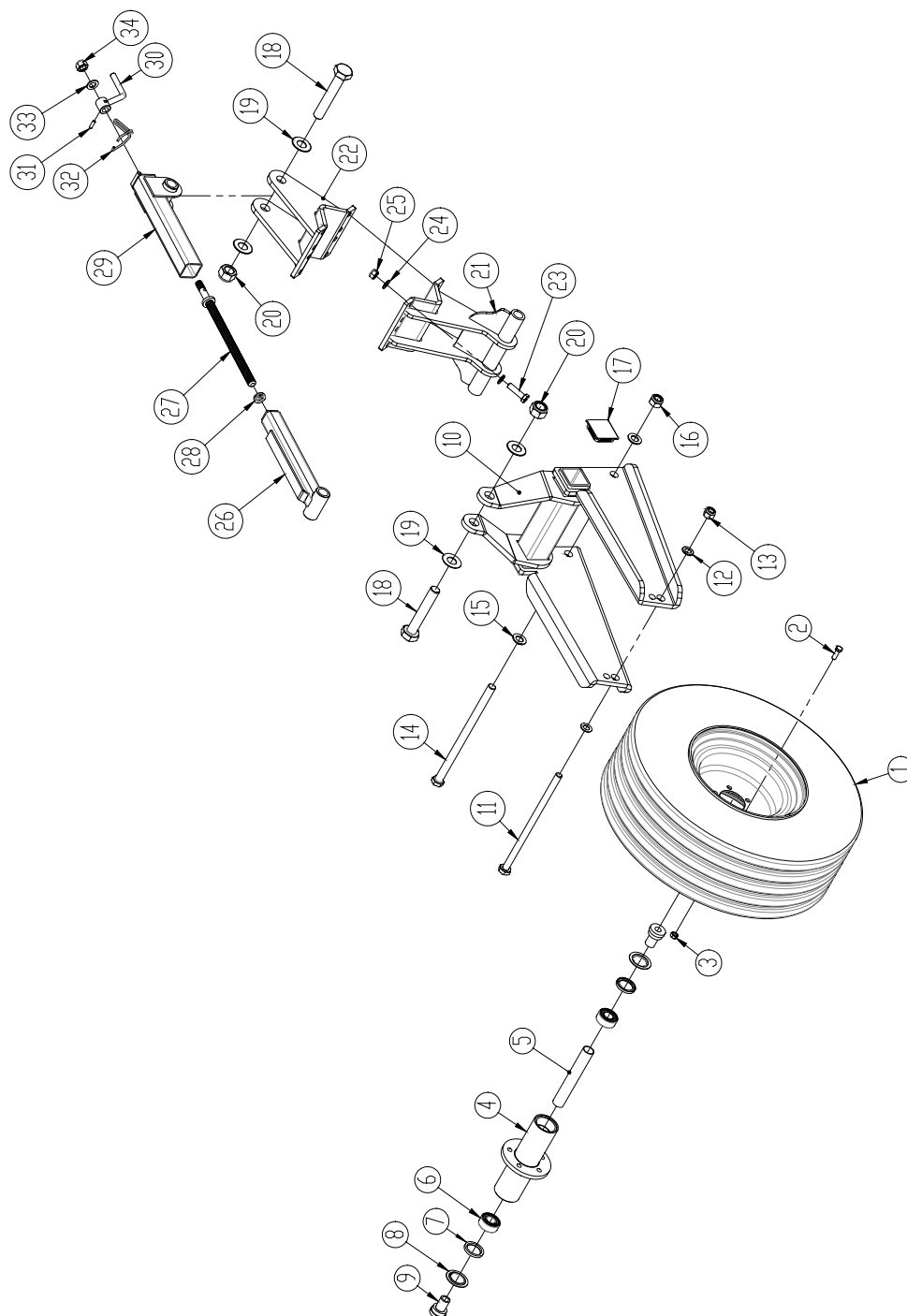
Pos.	Item no.	Designation	No.
1	1139830	Inner tube f/edge equipment	2
2	1139800	Outer tube f/edge equipment	2
3	0248660	Carrier bolt M12x40mm	6
4	0261370	Nut M12	6
5	0422375	Tine holder f/ 60x10mm tine	2
6	0422421	Levelling tine w/wearing point 60x10mm (R) (shown)	1
	0422420	Levelling tine w/wearing point 60x10mm (L)	1
7	0235470	Bolt M12x110	2
8	0272270	Facet plate M12	2
9	0264070	Self-locking nut M12	2
10	0422424	Wearing part	2
11	0381260	PB-bolt M12x35 incl. nut	4

### Edge equipment w/disc eradicator



Pos.	Item no.	Designation	No.
1	1139830	Inner tube f/edge equipment	2
2	1139800	Outer tube f/edge equipment	2
3	0248660	Carrier bolt M12x40mm	6
4	0261370	Nut M12	8
5	0422390	Tine holder f/ 80x10mm tine	2
6	0422144	Tine 80x10mm	2
7	0235480	Bolt M12x120mm	2
8	0272270	Facet plate Ø12	2
9	1139850	Bracket w/axle (R)	1
	1139840	Bracket w/axle (L)	1
10	630949019	Disc Ø45/71,7	2
11	690140651	Seal Ø72	2
12	0379250	Seeger circlip ring I Ø72	2
13	690140201	Bearing Ø35	2
14	30949030	Hub	2
15	690117062	Disc Ø20	2
16	0263000	Lock nut	2
17	0483730	O-ring Ø80/3	2
18	0427791	Serrated disc Ø400x5,0 mm	2
19	0248421	Carrier bolt M10x30mm	12
20	0272260	Facet plate Ø10	12
21	0264060	Self-locking nut M10	12

## Support wheels

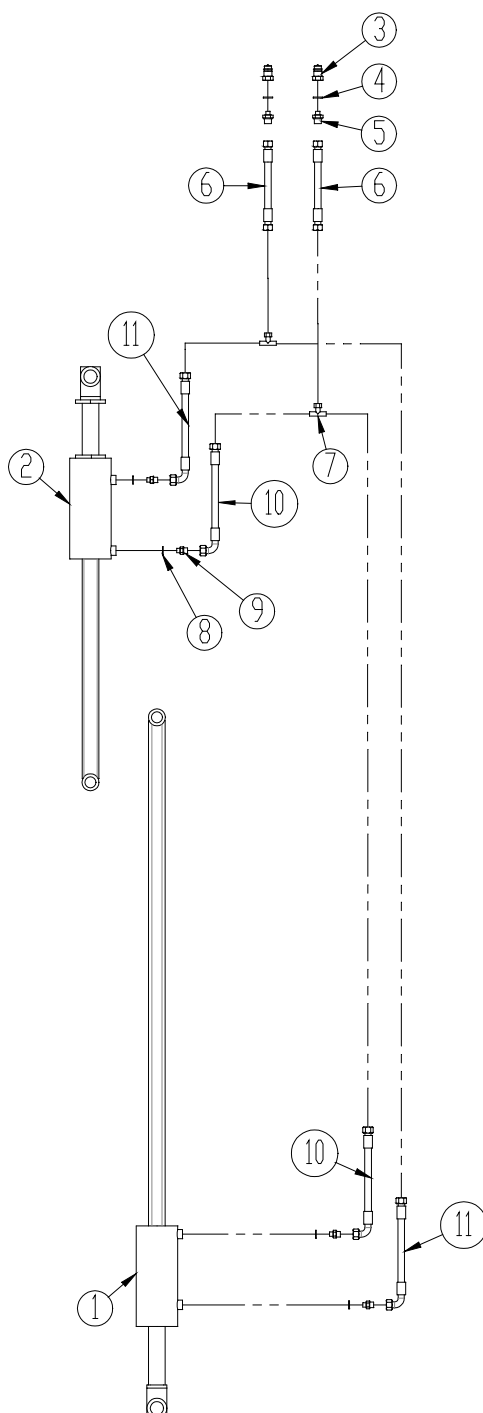




Pos	Item no.	Designation	3,0m	3,5m
1	0394700	Wheel (complete) 10.0/80x12 – 10 PLY	2	2
2	0394860	Hub bolt M12x1,5x36 mm	10	10
3	0394861	Nub nut M12x1,5 NV22mm	10	10
4	0394850	Hub (complete) pos. 4-9	2	2
4	1145390	Hub	2	2
5	1145393	Distance sleeve	2	2
6	0474100	Ball bearing 5206-2RS YC	4	4
7	0483585	Oil sealing ring Ø45/62x7	4	4
8	630949019	Disc Ø45/71,7	4	4
9	1145391	Axle for hub	4	4
10	1160255	Yoke for support wheel	2	2
11	0236332	Bolt M20x400mm 8.8	2	2
12	0272310	Facet plate Ø20 mm	4	4
13	0234110	Self-locking nut M20	2	2
14	0236570	Bolt M24x400mm 8.8	2	2
15	0272330	Facet plate Ø24 mm	4	4
16	0264130	Self-locking nut M24	2	2
17	0489620	Plastic plug	4	4
18	0237070	Bolt M30x180mm 8.8	4	4
19	0272350	Facet plate Ø30 mm	8	8
20	0264155	Self-locking nut M30	4	4
21	1160425	Guide for support wheel	2	2
22	1160462	Spindle holder for support wheel	2	2
23	0235840	Bolt M16x60mm 8.8	16	16
24	0272290	Facet plate Ø16	32	32
25	0264090	Self-locking nut M16	16	16
26	1145342	Inner tube	2	2
27	1145346	Spindle	2	2
28	0470500	Shaft bearing Ø20mm	2	2
29	1145341	Outer tube	2	2
	0652550	Transfer, scale 1-11	2	2
30	1036260	Crank	2	2
31	0371660	Roll pin Ø8x32mm	2	2
32	0431980	Spindle keeper	2	2
33	0272310	Facet plate Ø20mm	2	2
34	0264110	Self-locking nut M20	2	2
	1145502	Spindle complete (pos 26-34)		

## Hydraulics

### Trailed kit 3 – 3.5 m (rigid)



Pos.	Item no.	Designation	No.
1	1160178	Hydraulic cylinder	1
2	1160414	Hydraulic cylinder	1
3	0444020	Quick coupling 1/2"	2
4	0449070	Bounded seal 1/2"	2
5	0444490	Hexagon nipple 1/2" - 1/4"	2
6	0454550	Hose 1700mm. 1/4"	2
7	0446610	T-nipple 1/4"	2
8	0449050	Bounded seal 1/4"	4
9	0444510	Hexagon nipple 1/4" - 3/8"	4
10	0454560	Hose 1850mm. 1/4"	2
11	0454590	Hose 2000mm. 1/4"	2

## Notes







Maskiner til vækst  
Maskiner til vækst  
Maskiner til vækst  
Maskiner til vækst  
Maskiner til vækst  
Maskiner til vækst  
Maskiner til vækst



2010  
Danmark