

UK

HE-VA

Operating Instructions
Spare Parts List
Declaration of Conformity



Warning: Be sure to read the operation instructions before using the machine.

Weeder / Weeder HD

Work Width: 3.00 - 4.50 - 6.00 - 7.50 - 9.00 - 12.00 - 15.00 m



N. A. Christensensvej 34
DK-7900 Nykøbing Mors
Tel: 97724288
Fax: 97722112
www.he-va.com

Contents

EC DECLARATION OF CONFORMITY.....	3
Delivery check	4
Machine Description	4
Preface.....	4
Technical specifications	4
Responsibility of the user.....	5
Safety instructions for Weeder/Weeder HD	6
Safety and Instructions on Hydraulics	6
Transport on public roads	7
Front axle load	7
Labels on the machine.....	8
Starting up.....	9
Introduction.....	9
Assembling / attaching the HE-VA Weeder/Weeder HD.....	9
Starting	9
Maintenance	12
Lubrication	12
Spare Part List.....	14
Frame 3m og 6m	14
Frame 4,5m og 7,5 m	16
Frame 9 m	20
Frame 9 m LOW,	22
Side frame 9m LOW	24
Frame 12 m	26
Side frame 12 m	28
Frame 15 m	30
Side frame 15 m	32
Harrow link	34
Tilt link survey	35
Levelling bar 3m, 6m, 7,5m og 9m.....	38
Levelling plate.....	40
Hydraulic tine adjustment	41
Wheel set mounted behind.....	42
Multi-Seeder equipment.....	44
Universal-spreader bracket	46
LED- Lighting.....	48
Hydraulic.....	50
Tine adjustment 3m, 6m, 9m, 12m, 15m	50
Tine adjustment 4,5m, 7,5m	52
Note.....	53



EC DECLARATION OF CONFORMITY

in accordance with the EU Machinery Directive 2006/42/EC
applicable as from December 29th 2009:

HE-VA ApS
N. A. Christensensvej 34,
DK-7900 Nykøbing Mors

hereby confirms that the following machine has been manufactured in accordance with the Council
Directive 2006/42/EC.

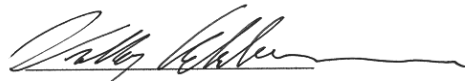
In addition, the following harmonized EU standard has been used:
ISO 12100 Machine safety, general design principles, risk assessment and risk reduction.

The declaration comprises the following machines:

Weeder

3,0m – 4,5m – 6,0m – 7,5m – 9,0m – 12,0m – 15,0m

Nykøbing the 15th of September 2010


Villy Christiansen

The undersigned is furthermore authorised to compile technical documentation for the above
machine. The design is subject to modification without notice.

Delivery check

Upon delivery to the dealer/supplier as well as to the customer, check the Weeder/Weeder HD for possible damages.

Machine Description

Preface

Weeder/Weeder HD is available in 8 different models with working widths of 3.0 m, 4.5 m, 6.0 m, 7.5 m, 9.0 m, 12.0m or 15,0m. Weeder/Weeder HD is designed for weeding in grain, rape, beets, and potatoes and for grassland aeration. Constructed with 1.5 m wide free-floating harrow sections, all Weeder adapts perfectly to all landscapes. Each section has 5 rows of double tines and with a tine spacing of 2.5 cm. The working angle of the tines is adjusted easily in 5 positions – with one handle for each section. As extra equipment, hydraulically adjustable tine aggressiveness can be supplied, making it possible to adjust the aggressiveness of the tine angle during work. As standard Weeder is mounted with Ø7 mm x 600 mm double tines suitable for row sowing. However, for hard and clayish soil a Ø7 mm x 450 mm double tine is available. Weeder HD is as standard mounted with Ø7 x 600 mm double tines or Ø9 x 600 mm double tines. You can also have Ø9 x 600 mm double tines on the 2 front rows and Ø7 x 600 mm double tines on the 3 back rows. The tine replacement is quick and easy without tools. Weeder/Weeder HD is standard-mounted with spindle infinitely adjustable wheels.

Leveling plate for effective leveling of molehills or cow pats can be mounted as extra equipment as well as factory- mounting of Multi-Seeder.

HE-VA reserves the right to make any alterations.

Technical specifications

Working width	Transport width	Number of tines	Number of sections	Number of wheels	Horsepower required	Lifting requirement	Weight	Height folded
3,0 m	3,0 m	60/120 pcs	2 pcs	2 pcs	30 hk	750 kg.	500 kg.	1,10 m.
4,5 m	3,0 m	90/180 pcs	3 pcs	2 pcs	40 hk	825 kg.	650 kg.	2,00 m.
6,0 m	3,0 m	120/240 pcs	4 pcs	2 pcs	50 hk	975 kg.	800 kg.	2,95 m.
7,5 m	3,0 m	150/300 pcs	5 pcs	4 pcs	60 hk	1200 kg.	890 kg.	3,40 m.
9,0 m	3,0 m	180/360 pcs	6 pcs	4 pcs	70 hk	1650 kg.	1100 kg.	3,70 m.
9,0 m LOW	3,0 m	180/360 pcs	6 pcs	4 pcs	70 hk	1650 kg	1180 kg	3,35 m
12,0m	3,0 m	240/480 pcs	8 pcs	4 pcs	90 hk	2250 kg.	1500 kg.	3,35 m.
15,0m	3,0 m	300/600 pcs	10 pcs	6 pcs	110 hk	2850 kg	1900 kg	4,25 m

Working width	Transport width	Number of tines	Number of sections	Number of wheels	Horsepower required	Lifting requirement	Weight	Height folded
3,0 m HD	3,0 m	60/120 pcs	2 pcs	2 pcs	40 hk	750 kg.	530 kg.	1,10 m.
4,5 m HD	3,0 m	90/180 pcs	3 pcs	2 pcs	50 hk	825 kg.	620 kg.	2,00 m.
6,0 m HD	3,0 m	120/240 pcs	4 pcs	2 pcs	60 hk	975 kg.	720 kg.	2,95 m.
7,5 m HD	3,0 m	150/300 pcs	5 pcs	4 pcs	70 hk	1200 kg.	890 kg.	3,40 m.
9,0 m HD	3,0 m	180/360 pcs	6 pcs	4 pcs	80 hk	1650 kg.	1210 kg.	3,70 m.
9,0 m LOW HD	3,0 m	180/360 pcs	6 pcs	4 pcs	80 hk	1650 kg	1290 kg	3,35 m
12,0m HD	3,0 m	240/480 pcs	8 pcs	4 pcs	110 hk	2250 kg.	1630 kg.	3,35 m.
15,0m HD	3,0 m	300/600 pcs	10 pcs	6 pcs	130 hk	2850 kg	2030 kg	4,25 m

Responsibility of the user

The user is responsible that the operator has the needed competence. Since HE-VA cannot control the use of the harrow, we can only guarantee the quality of the machine, and cannot accept any kind of claims for compensation in connection with the work of the machine.

Any kind of injury caused by staying in dangerous areas will always be the responsibility of the user.

The user is responsible that the machine is legal during transport on public roads. Please pay attention to: lights, weight, transport width, disposition of weight on the tractor (extra front weight might be necessary).

Safety instructions for Weeder/Weeder HD

Do not start-up the machine if there are persons in exposed positions* within a hazardous area**.

When persons are in exposed positions (e.g. in connection with adjustment, maintenance, attachment, and uncoupling), the following conditions must be observed:

1. The machine must be lowered to firm ground.
2. The hydraulics must be relieved.
3. The tractor must be stopped, and the key removed from the ignition switch.
4. The driver must ensure that no persons are staying in exposed positions during the operation.

* Person in exposed position: Any person who is staying wholly or partly within a hazardous area.

** Hazardous area: On and under the machine within a distance of 4 m from the machine.

Most accidents that happen in connection with the operation, transport and maintenance of machines are caused by non-compliance with the most elementary safety conditions. Therefore, it is vital that anybody working at the machine carefully complies with the safety instructions as well as other instructions applying to the machine.

The machine should only be operated, maintained, and repaired by persons, who are familiar with this work and who are further familiar with the possible elements of danger with this particular machine.

ATTENTION !! Rotary parts and loose clothes are a dangerous combination.

IMPORTANT !! In connection with the risk of parts falling down, it may endanger the lives of persons staying on the base frame of the machine, when it is operated attached to a tractor.

IMPORTANT !! In connection with transport and machine storage, the safety lock must be activated

Safety and Instructions on Hydraulics

1. The maximum working pressure is 225 bar.
2. It is advisable to label the attachment parts at hydraulic connections between the tractor and the tool in order to eliminate incorrect operation!
3. When checking for hydraulic leaks, use suitable safety wear (eye protectors, gloves, etc.) High-pressure hydraulic oil may penetrate the skin and cause dangerous injuries. In case of injury, consult a doctor immediately. **RISK OF INFECTION!**
4. Before operating the hydraulics, lower the machine to firm ground. Relieve the hydraulics, stop the motor, and remove the ignition key.

5. Check the hydraulic hoses on a regular basis, however, every six months as a minimum due to any cracks, wear, and tear, etc. Replace any defective hoses immediately.

The life of hydraulic hoses is maximum 5 years.

New hydraulic hoses must meet the manufacturer's requirements.

Transport on public roads

Check before transport on public roads that the attachment of the machine at the tractor is in accordance with the local rules and regulations in force (permitted total weight, permitted axle load, transport width, lights, warning signs, etc.).

Front axle load

After the attachment of the machine and at maximum load, the driving properties of the tractor must be ensured. Check that the front axle is sufficiently loaded. As a minimum, the front axle load must be 20% of the tractor weight. Permitted axle load and permitted total weight for the tractor must always be observed.

NB! The driving, controlling and braking properties are affected by the attached machine combination

Labels on the machine



Study the Operating Instructions thoroughly before any operation of the machine and observe all safety instructions.



Plate with number and year of manufacture.

IMPORTANT!
All bolts must be tightened after the first few hours of operation, otherwise our guarantee will not apply.

IMPORTANT!
Resserrer tous les boulons et écrous après la première mise en marche. Le cas échéant nos obligations de garantie seront à considérer comme nulles.

WICHTIG!
Alle Muttern nach kurzem Gebrauch nachziehen. Bei Nichtbeachtung entfallen Gewährleistungsansprüche.

VIGTIG!
Efterspænd alle møtrikker efter kort tids brug. Hvis dette ikke overholdes, bortfalder vore garantiforpligtelser.

Tighten up all bolts regularly. If this is not performed, our guarantee obligations will no longer apply.



Take care that no persons are within the machine's hazardous area during the unfolding and folding procedure.

Starting up

Introduction

The following is a brief guide to the assembly and use of your Weeder/Weeder HD. The Weeder/Weeder HD is specially constructed for weeding in cereals, beans, corn, potatoes etc. And also for easy tillage work on ploughed land and for treatment of grassfields.

Assembling / attaching the HE-VA Weeder/Weeder HD

See page 11

Starting

- **Folding down side frames.**

When the hydraulic hoses are mounted in the double-acting hydraulic oil outlet on the tractor, the hydraulic cylinder has to be filled with oil, to relieve the pressure on the security chains, then you can dismount the chains and lower the side frames. Remember to lift the harrow before the side frames are folded down. Be sure that there aren't any persons inside the dangerous area.

- **Folding up side frames.**

Lift the harrow from the ground.

The weeder tines has to be located in position 1 or 2 (see fig. 7) before folding up side frames, when side frames has been folded up security chains are mounted.

- **The correct adjustment**

The correct adjustment of the Weeder will be decisive for the result of the work done. This is best achieved by means of a trial run.

Fig. 1



Quick-coupling on the 6,0 and 7,5 m

Fig. 2



Attachment plates on 9,0 and 12,0 m.

- **Angle.**
The angle of the weeder tines is adjusted by means of the handle on the harrow frame. Heavy soil requires aggressive adjustment of the tines.
- **The harrow frames has to be horizontal.**
During work this is being adjusted by means of the spindles for the bearing wheels. (See fig. 6).
- **Adjusting side frames.**
When the harrow is lifted, the side frames should hang a little otherwise you have to adjust the stop screws. (See fig. 4).

- **Info:**

Speed: The best speed is 3-10 mph

Maintenance: Important! Tighten all bolts and after a few hours use. Further tightening should be carried out at regular intervals

Lubrication: Spindle regulators bearings for harrow sections and bearings for side sections

Storage: Clean the harrow. Raise the harrow section free of the ground so that the weight of the harrow is taken by the wheels and the supporting jack.

Fig. 3



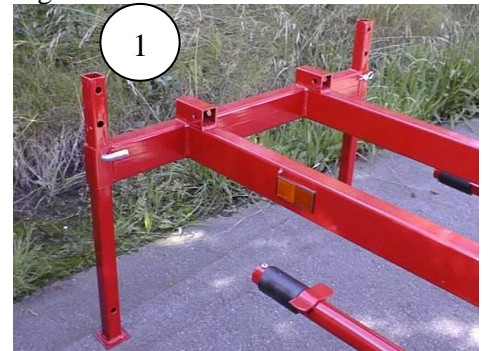
Security chain for side frames.

Fig. 4



Adjustable stop for side frames.

Fig. 5



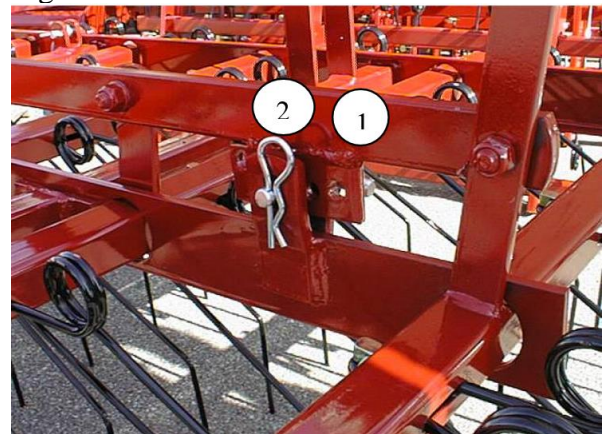
The support jacks are placed in the tubes (1), before the side frames are folded down..

Fig. 6



The support wheels have to be adjusted, so that the harrow frames are horizontal during work. Remember to lock the spindle.

Fig. 7



Adjustment of the tines (angle).

Fig. 8



The tines are easily dismantled/mounted by means of a ring split.

Maintenance

- After 10 hours of operation, retighten the machine.
Check hydraulic hoses, fittings and cylinders for leaks and retighten. See table below.
- Furthermore, check on a regular basis that all bolts are tightened.
- Before the winter storage, wash and lubricate the machine. If you use high-pressure cleaner, do not spray directly on the ball bearings. After the washing, you may spray the machine with oil.

Maximum torque in Nm. w/lubricated thread			
Metric thread	Quality 8.8	Quality 10.9	Quality 12.9
M10x1,5	47	65	79
M12x1,75	81	114	136
M14x2,0	128	181	217
M16x2,0	197	277	333
M18x2,5	275	386	463
M20x2,5	385	541	649
M22x2,5	518	728	874
M24x3,0	665	935	1120
Wheel bolt M18x1,5 fine thread		385	
Wheel bolt M22x1,5 fine thread		550	

Lubrication

For lubrication, maintenance, and repair, lower the Weeder, put the brakes of the tractor on and stop the motor.

Typically, the lubrication points are located by the spring release, by the roller bearings, by the cylinders and the wing sections hinges.

The machine must be lubricated after 10 working hours as well as after cleaning in order to press out any water and dirt.

Note!

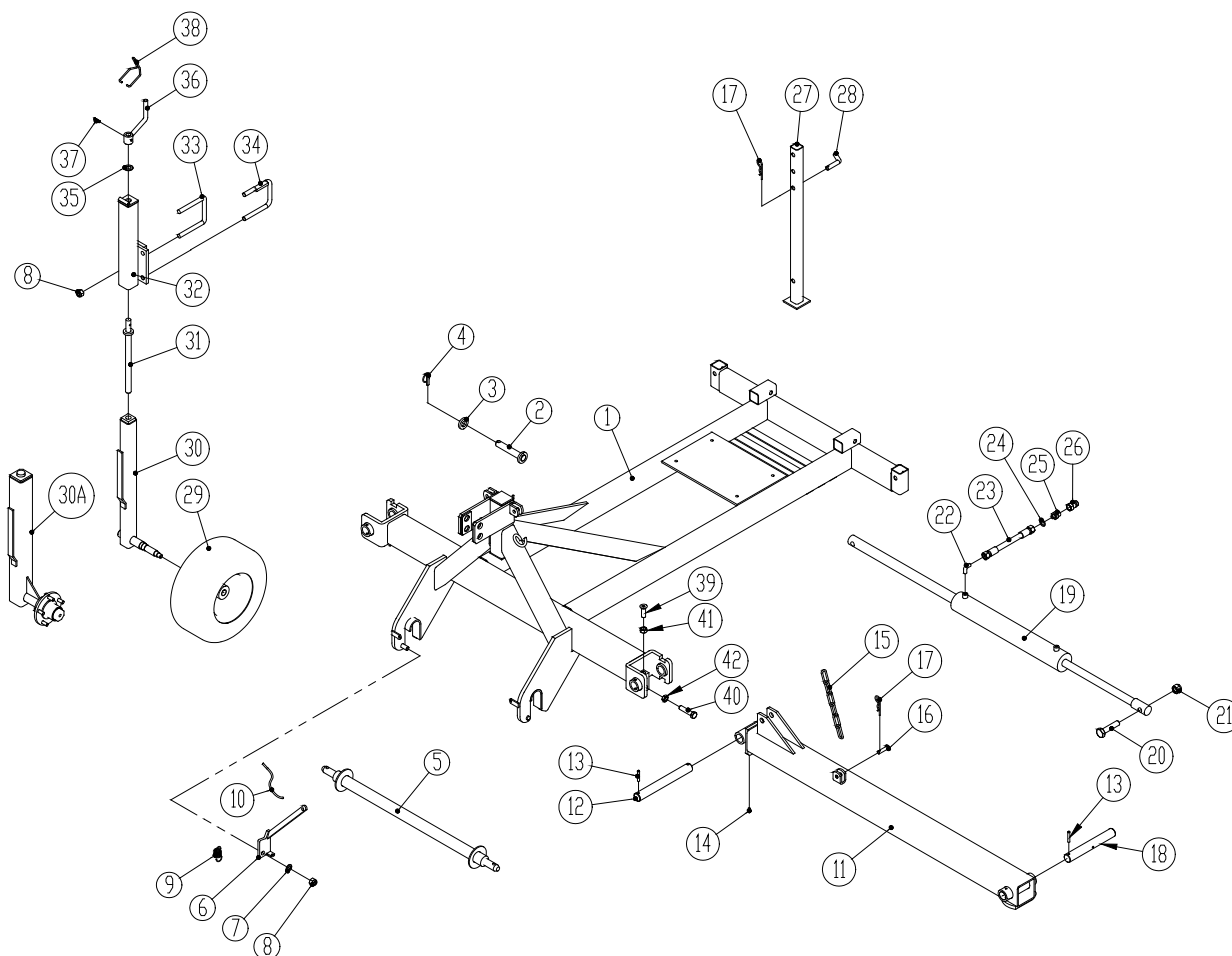
However, the double-sealed ball bearings in the roller should only be lubricated every 20 working hours and by 1-2 strokes so that the sealing rings

Important!

Oil, type Hydro Texaco HD32 has been filled in the hydraulic system.

Spare Part List

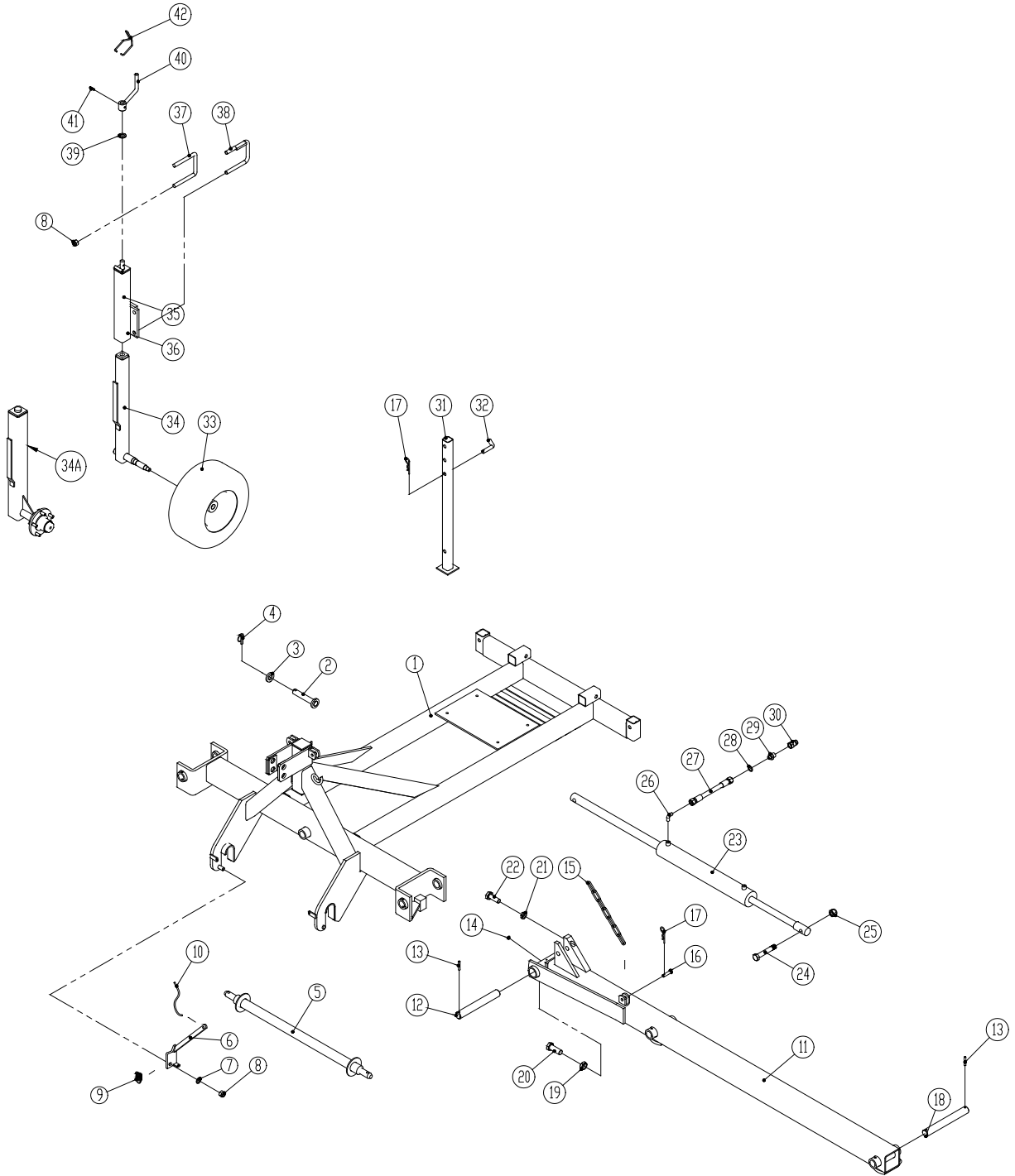
Frame 3m og 6m



Pos	Part No.	Description	3m	3m HD	6m	6m HD
1	1100001	Frame (to machine no 30859)	1	1	1	1
	1103522	Frame (from machine no 30860 to Jan. 2024)	1	1	1	1
	1103797	Frame (from Jan. 2024)	1	1	1	1
2	1068890	Pin Ø25x135mm.	1	1	1	1
3	1044600	Disc Ø26x8mm.	1	1	1	1
4	0378600	Ring split Ø11x40mm.	1	1	1	1
5	1011860	Drawbar	1	1	1	1
6	1012180	Locking pawl, left	1	1	1	1
	1012190	Locking pawl, right	1	1	1	1
7	0272290	Disc Ø16	2	2	2	2
8	0264090	Lock nut M16	10	10	10	10
9	0431600	Spring Ø2x16x30	2	2	2	2
10	0486250	Rope Ø6x4m.	1	1	1	1
11	1100180	Sideframe 6,0m, left (to machine no 30859)			1	1
	1100190	Sideframe 6,0m, right (to machine no 30859)			1	1
	1103516	Sideframe 6,0m, left (from machine no 30860 to Jan. 2024)			1	1
	1103517	Sideframe 6,0m, right (from machine no 30860 to Jan. 2024)			1	1
	1103791	Sideframe 6,0m, left (from Jan. 2024)			1	1
	1103793	Sideframe 6,0m, right (from Jan. 2024)			1	1
12	1101800	Axle Ø35x295mm.	2	2	2	2
13	0371701	Retaining pin Ø8x50mm.	4	4	4	4
14	0432100	Lubricator nipple M6	2	2	2	2
15	1101750	Chain (to 1/11 2014)			2	2
	1103699	Chain (from 1/11 2014 to Jan. 2024)			2	2

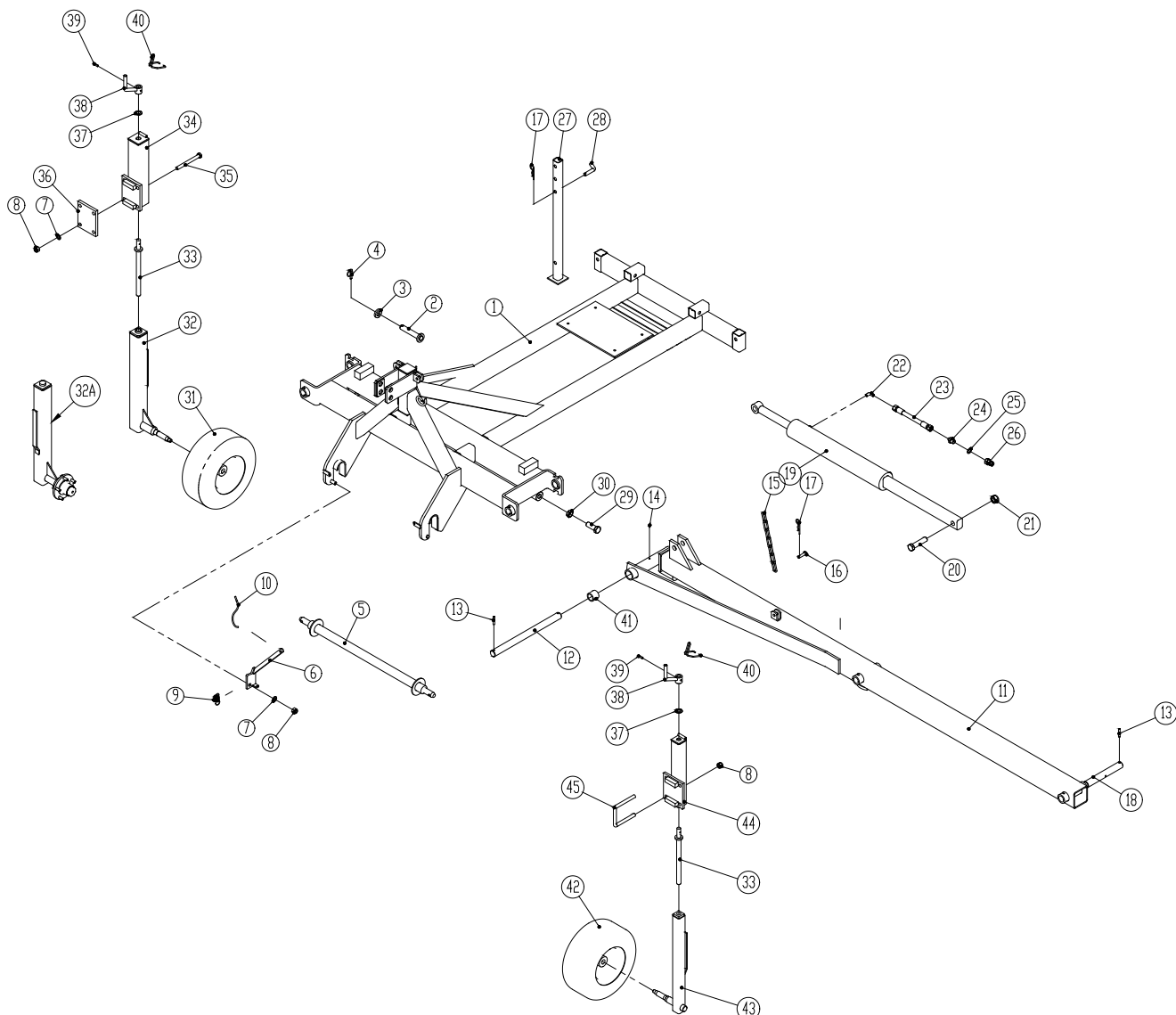
Pos	Part No.	Description	3m	3m HD	6m	6m HD
	0442340	Valve block with tap ¼" (from Jan. 2024)			1	1
15a	0408670	D-Shackle 8m (from 1/11 2014 to Jan. 2024)			2	2
	0446110	Angle nipple ¼" (from Jan. 2024)			1	1
15b	0433480	Bardun tightener (from 1/11 2014 to Jan. 2024)			2	2
	0444500	Hexagon nipple ¼" (from Jan. 2024)			1	1
16	1011520	Pin Ø12x50mm.	4	4	4	4
17	0377400	Retaining pin Ø4	6	6	6	6
18	1100220	Pin Ø35x255mm. (to machine no 29513)			2	2
	1103474	Pin Ø35x279mm (from machine no 29514)			2	2
19	0462201	Hydraulic cylinder Ø80/70x30 – length of stroke: 460mm. (to Jan. 2024)	1	1	1	1
	0462203	Hydraulisk cylinder Ø80/70x30 – length of stroke 552mm N/N (fra jan. 2024)	1	1	1	1
20	0236180	Hexagon bolt M20x90mm. 8.8	2	2	2	2
21	0264110	Lock nut M20	2	2	2	2
22	0446130	Fitting, 90angle ¼" conic x 1	2	2	2	2
23	0454500	Hose 1600mm. ¼"	2	2	2	2
24	0449070	Bounded seal ½"	2	2	2	2
25	0444490	Hexagon nipple ½" – ¼"	2	2	2	2
26	0444020	Quick-coupling ½" – male	2	2	2	2
27	1100170	Stay rod	2	2	2	2
28	1027060	Pin Ø16x56mm.	2	2	2	2
29	0394100	Complete wheel 16,5x6,5x8 6 PLY	2	2	2	
	0394200	Complete wheel 18,5x8,5x8 6 PLY (to machine no 31341)				2
	0394230	Complete wheel 18,5x8,5x8 6 PLY (from machine no 31342)				2
30	1100360	Spindle tube 50x50, left (to machine no 30612)	1	1	1	30
	1100540	Spindle tube 50x50, right (to machine no 30612)	1	1	1	
	1103497	Spindle tube 70x70, left (16" wheel) (from machine no 30613)	1	1	1	
	1103498	Spindle tube 70x70, right (16" wheel) (from machine no 30613)	1	1	1	
	1102290	Spindle tube 70x70, left (18" wheel) (to machine no 31341)				1
	1102300	Spindle tube 70x70, right (18" wheel) (to machine no 31341)				1
30a	1103506	Spindle tube w/hub 70x70, left (18" wheel) (from machine no 31342)				1
	1103505	Spindle tube w/hub 70x70, right (18" wheel) (from machine no 31342)				1
	0393827	Hub caps				
	0478988	Bearing 30205				
	0394861	Hubnut				
	0394860	Hubbolt				
	0393630	Seal				
	0478990	Bearing 30207				
31	1080520	Spindle M22x350mm.	2	2	2	2
32	1100331	Spindle tube 60x60 (to machine no 30612)	2	2	2	
	1102315	Spindle tube 80x80 (from machine no 30613 to 30859)	2	2	2	
	1102315	Spindle tube 80x80 (to machine no 30859)				2
	1103520	Spindle tube 80x80 (from machine no 30860)	2	2	2	2
33	0382160	U-bolt M16 100x100	3	3	3	3
34	1103220	U-bolt M16 100x100 with flat piece	1	1	1	1
35	0272310	Disc Ø20	2	2	2	2
36	1036260	Handle	2	2	2	2
37	0371660	Retaining pin Ø8x32mm.	2	2	2	2
38	0431980	Locking bracket Ø5	2	2	2	2
39	0227600	Hex/ allen bolt M16x40mm	2	2	2	2
40	0235860	Bolt M16x70mm	2	2	2	2
41	0261390	Nut M16	2	2	2	2
42	0261392	Counter nut M16	2	2	2	2

Frame 4,5m og 7,5 m



Pos	Part No.	Description	4,5m	4,5m HD	7,5m	7,5m HD
1	1100841	Frame (to machine no 30859)	1	1	1	1
	1103521	Frame (from machine no 30860 to Jan. 2024)	1	1	1	1
	1103980	Frame (from Jan. 2024)	1	1	1	1
2	1068890	Pin Ø25x135mm.	1	1	1	1
3	1044600	Disc Ø26x8mm.	1	1	1	1
4	0378600	Ring split Ø11x40mm.	1	1	1	1
5	1011860	Drawbar	1	1	1	1
6	1012180	Locking pawl, left	1	1	1	1
	1012190	Locking pawl, right	1	1	1	1
7	0272290	Disc Ø16	2	2	2	2
8	0264090	Lock nut M16	10	10	18	18
9	0431600	Spring Ø2x16x30	2	2	2	2
10	0486250	Rope Ø6x4m.	1	1	1	1
11	1102211	Side frame, left – 4,5m. (to machine no 30859)	1	1		
	1102221	Side frame, right – 4,5m. (to machine no 30859)	1	1		
	1100861	Side frame, left – 7,5m. (to machine no 30859)			1	1
	1100871	Side frame, right – 7,5m. (to machine no 30859)			1	1
	1103514	Side frame, left – 4, (from machine no 30860 to Jan. 2024)	1	1		
	1103513	Side frame, right – 4,5m. (from machine no 30860 to Jan. 2024)	1	1		
	1103509	Side frame, left – 7,5m. (from machine no 30860 to Jan. 2024)			1	1
	1103512	Side frame, right – 7,5m. (from machine no 30860 to Jan. 2024)			1	1
	1103986	Side frame, left – 4,5m (from Jan. 2024)	1	1		
	1103985	Side frame, right – 4,5m. (from Jan. 2024)	1	1		
	1103982	Side frame, left – 7,5m. (from Jan. 2024)			1	1
	1103984	Side frame, right – 7,5m. (from Jan. 2024)			1	1
12	1102420	Axle Ø35x270mm.	2	2	2	2
13	0371701	Retaining pin Ø8x50mm.	4	4	4	4
14	0432100	Lubricator nipple M6	2	2	2	2
15	1101750	Chain (to 1/11 2014)	2	2	2	2
	1103699	Chain (from 1/11 2014 to Jan. 2024)	2	2	2	2
	0442340	Valve block with tap ¼” (from Jan. 2024)	1	1	1	1
15a	0408670	D-Shackle 8m (from 1/11 2014 to Jan. 2024)	2	2	2	2
	0446110	Angle nipple ¼” (from Jan. 2024)	2	2	2	2
15b	0433480	Bardun tightener (from 1/11 2014 to Jan. 2024)	1	1	1	1
	0444500	Hexagon nipple ¼” (from Jan. 2024)	1	1	1	1
16	1011520	Pin Ø12x50mm.	4	4	4	4
17	0377400	Retaining pin Ø4	6	6	6	6
18	1100220	Pin Ø35x255mm (to machine no 29513)	2	2	4	4
	1103474	Pin Ø35x279mm.. (from machine no 29514)	2	2	4	4
19	0261430	Counter nut M24x3,0mm.			2	2
20	0236360	Hexagon bolt M24x65mm. 8.8			2	2
21	0261411	Counter nut M20x3,0mm.			2	2
22	0236130	Hexagon bolt M20x60mm. 8.8			2	2
23	0462201	Hydraulic cylinder Ø80/70x30 – length of stroke: 460mm. (to Jan. 2024)	1	1	1	1
	0462203	Hydraulisk cylinder Ø80/70x30 – length of stroke 552mm N/N (fra jan. 2024)	1	1	1	1
24	0236210	Hexagon bolt M20x120mm. 8.8	2	2	2	2
25	0264110	Lock nut M20	2	2	2	2
26	0446130	Fitting, 90angle ¼” conic x 1	2	2	2	2
27	0454500	Hose 1600mm. ¼”	2	2	2	2
28	0449070	Bounded seal ½”	2	2	2	2
29	0444490	Hexagon nipple ½” – ¼”	2	2	2	2
30	0444020	Quick-coupling ½” – male	2	2	2	2
31	1100170	Stay rod	2	2	2	2
32	1027060	Pin Ø16x56mm.	2	2	2	2
33	0394100	Complete wheel 16,5x6,5x8 6 PLY	2		4	2

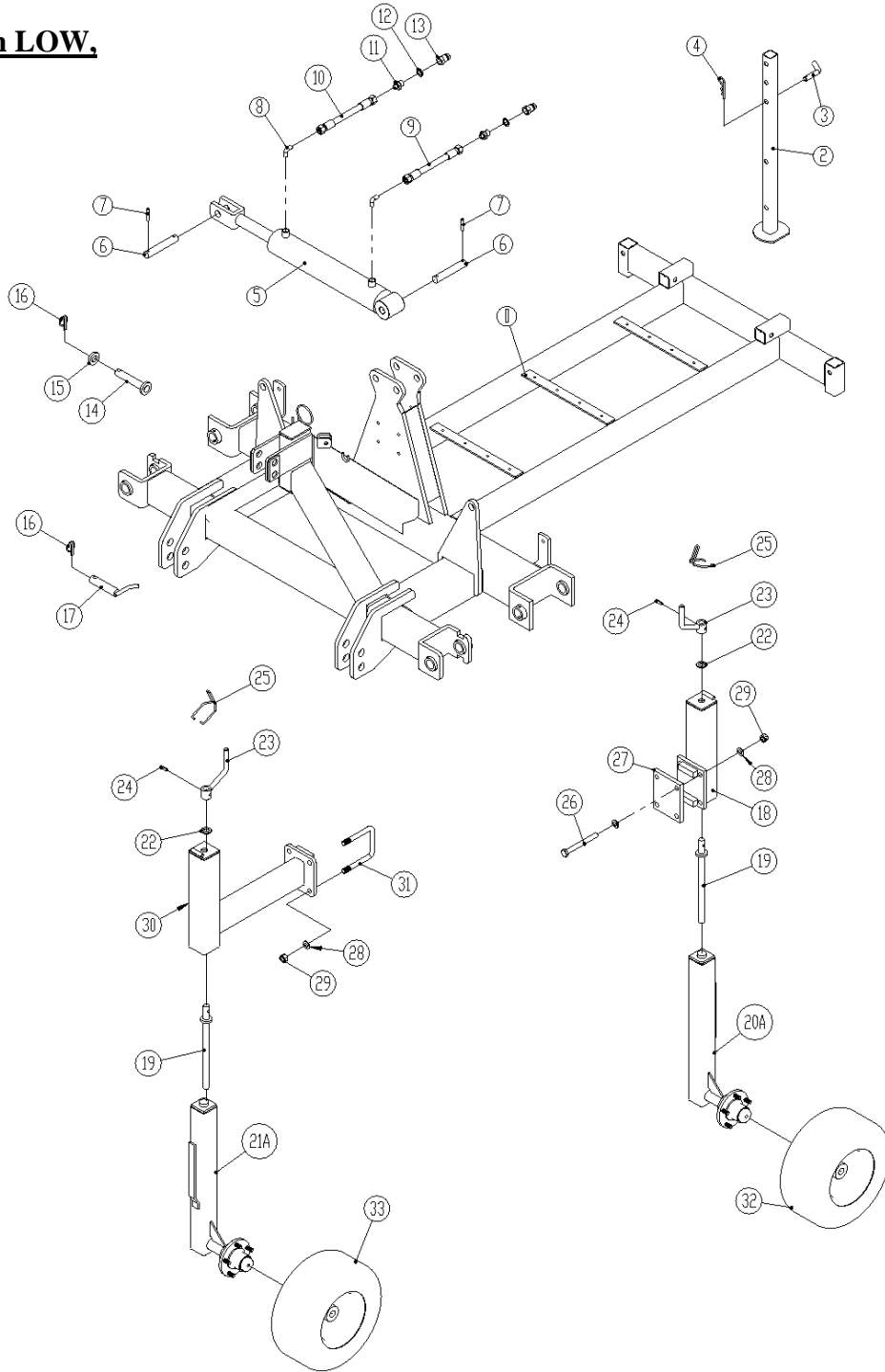
Pos	Part No.	Description	4,5m	4,5m HD	7,5m	7,5m HD
	0394200	Complete wheel 18,5x8,5x8 6 PLY (to machine no 31341)		2		2
	0394230	Complete wheel 18,5x8,5x8 6 PLY (from machine no 31342)		2		2
34	1100360	Spindle tube 50x50, left (16" wheel) (to machine no 30612)	1		2	1
	1100540	Spindle tube 50x50, right (16" wheel) (to machine no 30612)	1		2	1
	1103497	Spindle tube 70x70, left (16" wheel) (from machine no 30613)	1		2	1
	1103498	Spindle tube 70x70, right (16" wheel) (from machine no 30613)	1		2	1
	1102290	Spindle tube 70x70, left (18" wheel) (to machine no 31341)		1		1
	1102300	Spindle tube 70x70, right (18" wheel) (to machine no 31341)		1		1
34A	1103506	Spindle tube w/hub 70x70, left (18" wheel) (from machine no 31342)		1		1
	1103505	Spindle tube w/hub 70x70, right (18" wheel) (from machine no 31342)		1		1
	0393827	Hub caps				
	0478988	Bearing 30205				
	0394861	Hubnut				
	0394860	Hubbolt				
	0393630	Seal				
	0478990	Bearing 30207				
35	1080520	Spindle M22x350mm.	2	2	2	2
36	1100331	Spindle tube 60x60 (to machine no 30612)	2		4	2
	1102315	Spindle tube 80x80 (to machine no 30612)		2		2
	1102315	Spindle tube 80x80 (from machine no 30613 to 30859)	2	2	4	4
	1103520	Spindle tube 80x80 (from machine no 30860)	2	2	4	4
37	0382160	U-bolt M16 100x100	3	3	7	7
38	1103220	U-bolt M16 100x100 with flat piece	1	1	1	1
39	0272310	Disc Ø20	2	2	4	4
40	1036260	Handle	2	2	4	4
41	0371660	Retaining pin Ø8x32mm.	2	2	4	4
42	0431980	Locking bracket Ø5	2	2	4	4

Frame 9 m


Pos	Part No.	Description	9m	9m HD
1	1100911	Frame (to Jan. 2024)	1	1
	1103990	Frame (from Jan. 2024)	1	1
2	1068890	Pin Ø25x135mm.	1	1
3	1044600	Disc Ø26x8mm.	1	1
4	0378600	Ring split Ø11x40mm.	1	1
5	1011860	Drawbar	1	1
6	1012180	Locking pawl, left	1	1
	1012190	Locking pawl, right	1	1
7	0272290	Disc Ø16	18	18
8	0264090	Lock nut M16	18	18
9	0431600	Spring Ø2x16x30	2	2
10	0486250	Rope Ø6x4m.	1	1
11	1100921	Side frame, left (to Jan. 2024)	1	1
	1100931	Side frame, right (to Jan. 2024)	1	1
	1103987	Side frame, left (from Jan. 2024)	1	1
	1103989	Side frame, right (from Jan. 2024)	1	1
12	1102080	Axle Ø35x488mm.	2	2
13	0371701	Retaining pin Ø8x50mm.	6	6
14	0432100	Lubricator nipple M6	2	2
15	1101750	Chain (to 1/11 2014)	2	2

Pos	Part No.	Description	9m	9m HD
	1103699	Chain (from 1/11 2014 to Jan. 2024)	2	2
	0442340	Valve block with tap ¼" (from Jan. 2024)	1	1
15a	0408670	D-Shackle 8m (from 1/11 2014 to Jan. 2024)	2	2
	0446110	Angle nippel ¼" (from Jan. 2024)	1	1
15b	0433480	Bardun tightener (from 1/11 2014 to Jan. 2024)	2	2
	0444500	Hexagon nipple ¼" (from Jan. 2024)	1	1
16	1011520	Pin Ø12x50mm.	4	4
17	0377400	Retaining pin Ø4	6	6
18	1100220	Pin Ø35x255mm (to machine nr 29513)	4	4
	1103474	Pin Ø35x279mm. (from machine nr 29514)	4	4
19	1102230	Hydraulic cylinder 100x40 – length of stroke : 520mm.	1	1
20	0236410	Hexagon bolt M24x100mm. 8.8	2	2
21	0264130	Lock nut M24	2	2
22	0446130	Fitting, 90angle ¼" conic x 1	2	2
23	0454500	Hose 1600mm. ¼"	2	2
24	0449070	Bounded seal ½"	2	2
25	0444490	Hexagon nipple ½" – ¼"	2	2
26	0444020	Quick-coupling ½" – male	2	2
27	1100170	Stay rod	2	2
28	1027060	Pin Ø16x56mm.	2	2
29	0236360	Hexagon bolt M24x65mm. 8.8	2	2
30	0261430	Counter nut M24x3,0mm .	2	2
31	0394200	Complete wheel 18,5x8,5x8 6 PLY (to machine nr 31341)	2	2
	0394230	Complete wheel 18,5x8,5x8 6 PLY (from machine nr 31342)	2	2
32	1102290	Spindle tube 70x70, left (18" wheel) (to machine nr 31341)		1
	1102300	Spindle tube 70x70, right (18" wheel) (to machine nr 31341)		1
32A	1103506	Spindle tube w/hub 70x70, left (18" wheel) (from machine nr 31342)		1
	1103505	Spindle tube w/hub 70x70, right (18" wheel) (from machine nr 31342)		1
	0393827	Hub caps		
	0478988	Bearing 30205		
	0394861	Hubnut		
	0394860	Hubbolt		
	0393630	Seal		
	0478990	Bearing 30207		
33	1080520	Spindle M22x350mm.	4	4
34	1102315	Spindle tube 80x80 (from machine nr 30613 to 30859)	2	2
	1103520	Spindle tube 80x80 (from machine nr 30860)	2	2
35	0235950	Hexagon bolt M16x150mm. 8.8	8	8
36	1100390	Clamp	2	2
37	0272310	Disc Ø20	4	4
38	1036260	Handle	4	4
39	0371660	Retaining pin Ø8x32mm.	4	4
40	0431980	Locking bracket Ø5	4	4
41	0475310	Sliding shell EG Ø45/Ø35x40mm.	4	4
42	0394100	Complete wheel 16,5x6,5x8 6 PLY	2	2
43	1100360	Spindle tube 50x50, left (to machine nr 30612)	1	1
	1100540	Spindle tube 50x50, right (to machine nr 30612)	1	1
	1103497	Spindle tube 70x70, left (from machine nr 30613)	1	1
	1103498	Spindle tube 70x70, right (from machine nr 30613)	1	1
44	1100331	Spindle tube 60x60 (to machine nr 30612)	2	2
	1102315	Spindle tube 80x80 (from machine nr 30613 to 30859)	2	2
	1103520	Spindle tube 80x80 (from machine nr 30860)	2	2
45	0382160	U-bolt M16 100x100	4	

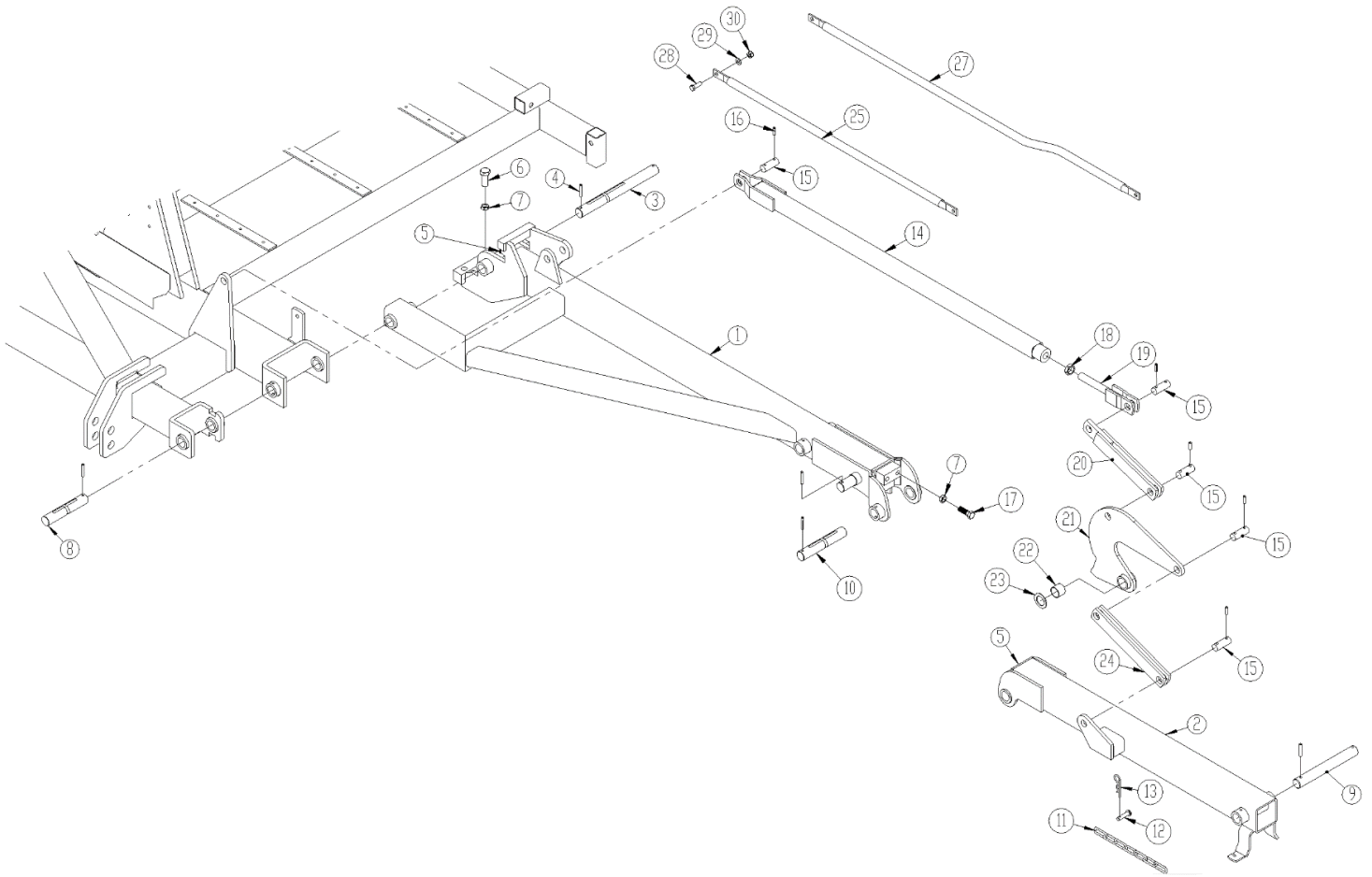
Frame 9 m LOW.



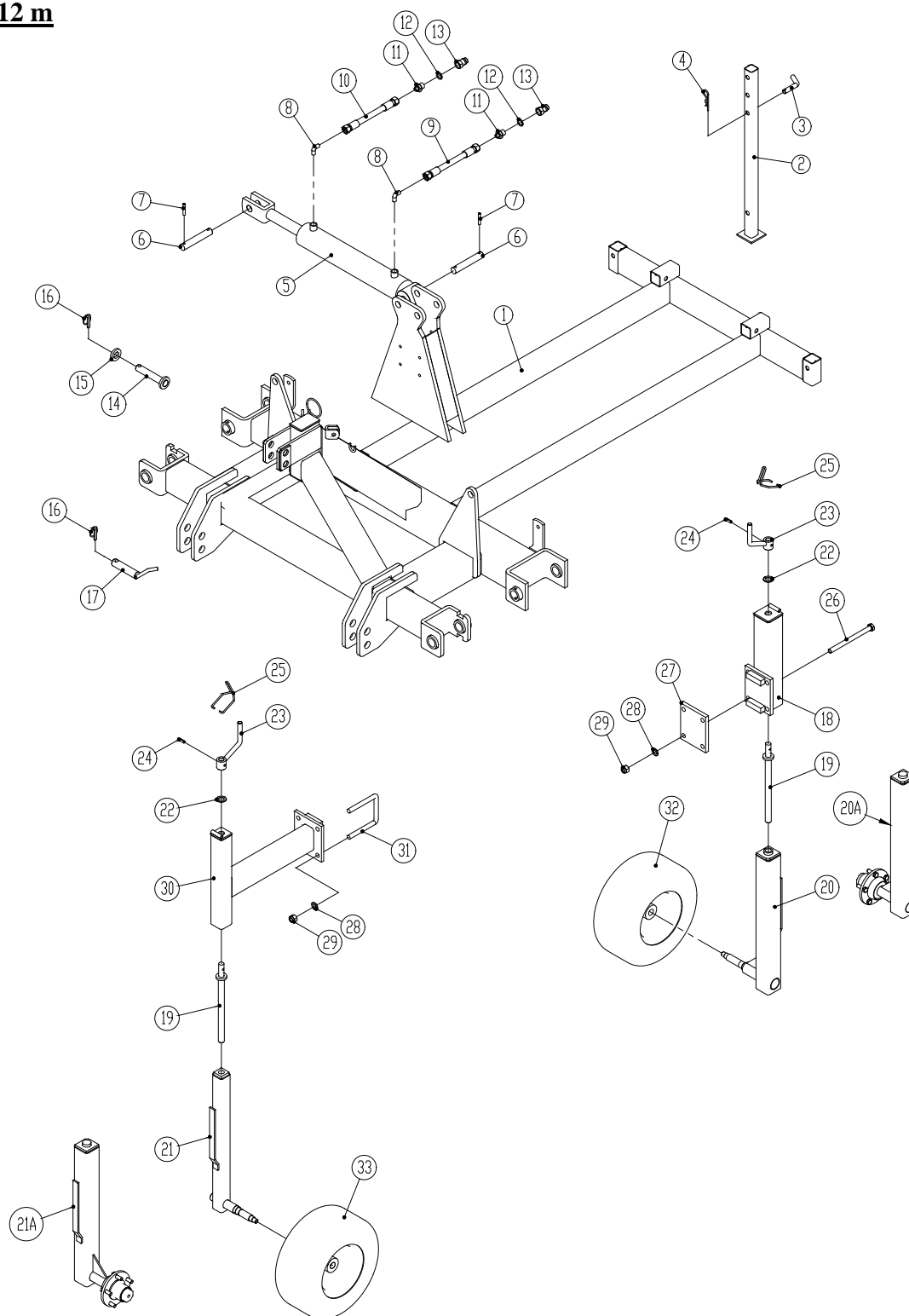
Pos	Part No.	Description	9m	9m HD
1	1100950	Frame	1	1
2	1100170	Stay rod	2	2
3	1027060	Pin Ø16x56mm.	2	2
4	0377400	Retaining pin Ø4	2	2
5	0462900	Hydraulic cylinder Ø80/40 – length of stroke: 380mm.	2	2
6	1051110	Pin Ø25x125mm.	2	2
	1051120	Pin Ø25x145mm.	2	2
7	0371701	Retaining pin Ø8x50mm.	4	4
8	0446120	Fitting, 90angle 3/8" conic x 1	2	2
9	0454520	Hose 1600mm. 3/8"	2	2
10	0454580	Hose 2000mm. 3/8"	2	2
11	0444490	Hexagon nipple 1/2" – 1/4"	2	2
12	0449070	Bounded seal 1/2"	2	2
13	0444020	Quick-coupling 1/2" – male	2	2

Pos	Part No.	Description	9m	9m HD
14	1068890	Pin Ø25x135mm.	1	1
15	1044600	Disc Ø26x8mm.	1	1
16	0378600	Ring split Ø11x40	3	3
17	1055460	Pin Ø28x120mm.	2	2
18	1102310	Spindle tube 80x80	2	2
19	1080520	Spindle M22x350mm.	4	4
20A	1103506	Spindle tube with hub 70x70, left (18" wheel)	1	1
	1103505	Spindle tube with hub 70x70, right (18" wheel)	1	1
	0393827	Hub caps		
	0478988	Bearing 30205		
	0394861	Hubnut		
	0394860	Hubbolt		
	0393630	Seal		
	0478990	Bearing 30207		
21A	1103497	Spindle tube 70x70, left (16" wheel)	1	
	1103498	Spindle tube 70x70, right (16" wheel)	1	
	1103506	Spindle tube with hub 70x70, left (18" wheel)		1
	1103505	Spindle tube with hub 70x70, right (18" wheel)		1
	0393827	Hub caps		
	0478988	Bearing 30205		
	0394861	Hubnut		
	0394860	Hubbolt		
	0393630	Seal		
	0478990	Bearing 30207		
22	0272310	Disc Ø20	4	4
23	1036260	Handle	4	4
24	0371660	Retaining pin Ø8x32mm.	4	4
25	0431980	Locking bracket Ø5	4	4
26	0235950	Hexagon bolt M16x150mm. 8.8	8	8
27	1102360	Clamp	2	2
28	0272290	Disc Ø16	16	16
29	0264090	Lock nut M16	16	16
30	1101682	Spindle tube 80x80 (18" wheel)	2	
31	0382160	U-bolt M16 100x100	4	4
32	0394230	Complete wheel 18,5x8,5x8 6 PLY	2	2
33	0394100	Complete wheel 16,5x6,5x8 6 PLY	2	
	0394230	Complete wheel 18,5x8,5x8 6 PLY		2

Side frame 9m LOW



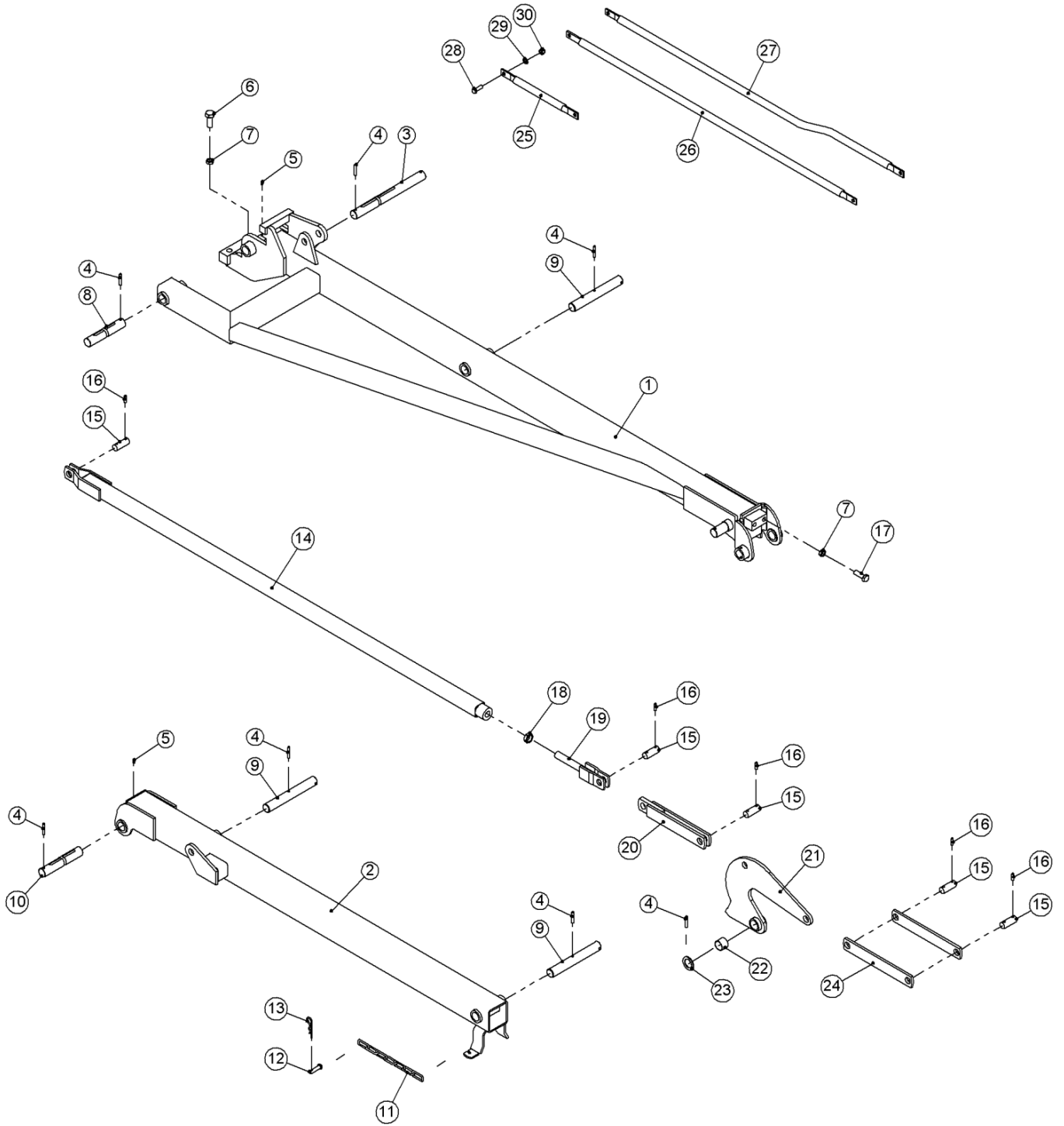
Pos	Part No.	Description	Number
1	1103805	Inner side frame, left	1
	1103814	Inner side frame, right	1
2	1103803	Outer side frame, left	1
	1103815	Outer side frame, right	1
3	1101700	Pin Ø35x365mm.	2
4	0371701	Retaining pin Ø8x50mm	14
5	0432100	Lubricator nipple M6	4
6	0236110	Hexagon bolt M20x50mm. 8.8	4
7	0261392	Counter nut M16x2,0mm.	8
8	1101730	Pin Ø35x185mm.	2
9	1103474	Pin Ø35x279mm	6
10	1101640	Pin Ø35x205mm.	2
11	1103700	Chain	2
11a	0408670	D-Shackle 8m	2
11b	0433480	Bardun tightener	2
12	1011520	Pin Ø12x50mm.	4
13	0377400	Retaining pin Ø4Ø4	4
14	1103809	Stay	2
15	1101620	Pin Ø25x65mm.	10
16	0371701	Retaining pin Ø8x50mm.	20
17	0235810	Hexagon bolt M16x50mm. 8.8	4
18	0261430	Counter nut M24x3,0mm.	2
19	1101550	Stay bracket	2
20	1101580	Stay link	2
21	1101480	Locking claw	2
22	0475090	Sliding shell Ø35/39/30	2
23	0272500	Disc Ø55/36,5x3mm.	2
24	1101610	Stay bracket	4
25	1103710	Stay	2
27	1101720	Offset stay	2
28	0235350	Hexagon bolt M12x35mm. 8.8	6
29	0272270	Disc Ø12	18
30	0264070	Lock nut M12	6

Frame 12 m


Pos.	Part No.	Description	12m	12m HD
1	1100950	Frame	1	1
2	1100170	Stay rod	2	2
3	1027060	Pin Ø16x56mm.	2	2
4	0377400	Retaining pin Ø4	2	2
5	0462900	Hydraulic cylinder Ø80/40 – length of stroke: 380mm.	2	2
6	1051110	Pin Ø25x125mm.	2	2
	1051120	Pin Ø25x145mm.	2	2
7	0371701	Retaining pin Ø8x50mm.	4	4
8	0446120	Fitting, 90angle 3/8" conic x 1	2	2
9	0454520	Hose 1600mm. 3/8"	2	2

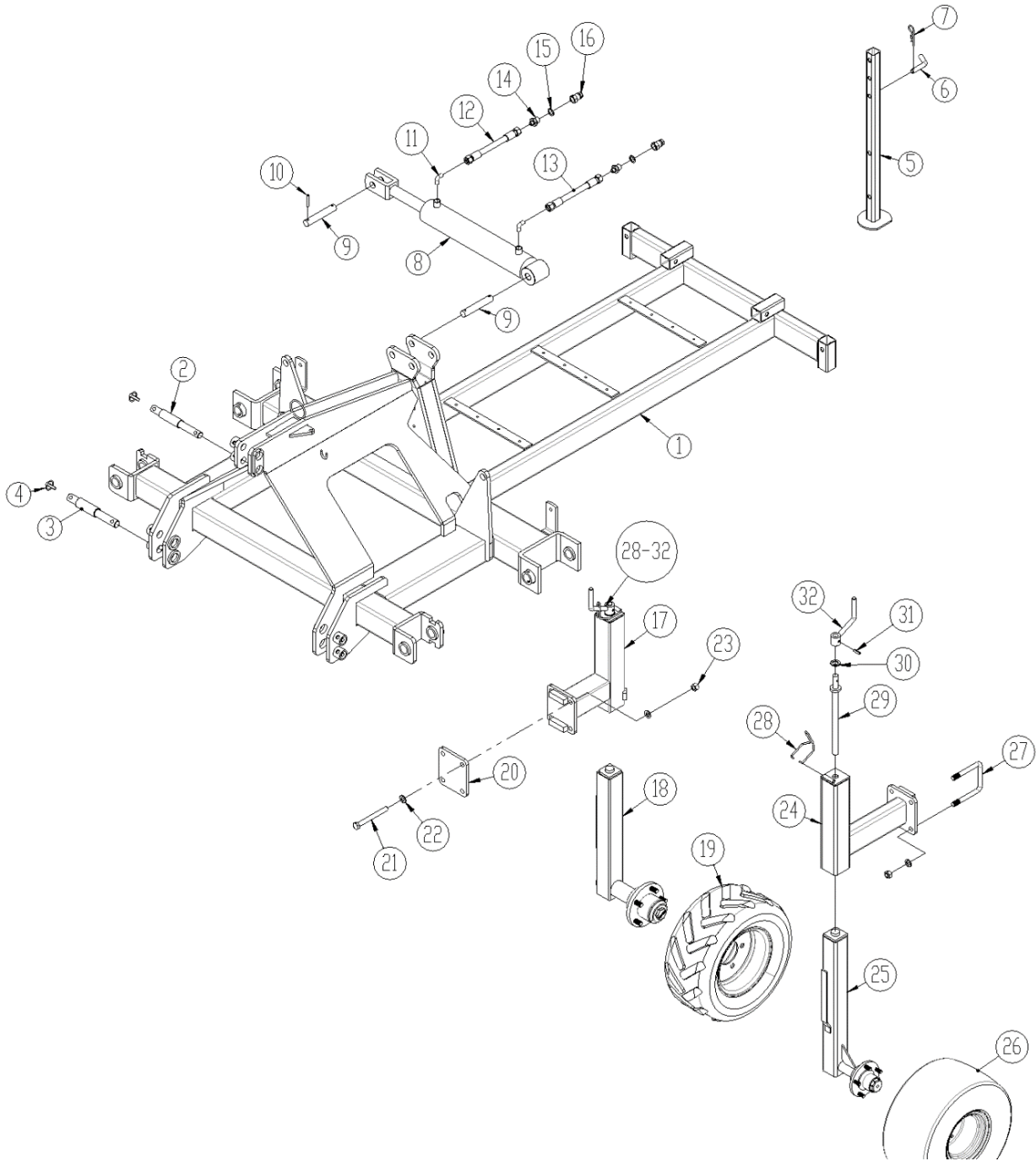
Pos.	Part No.	Description	12m	12m HD
10	0454580	Hose 2000mm. 3/8"	2	2
11	0444490	Hexagon nipple 1/2" – 1/4"	2	2
12	0449070	Bounded seal 1/2"	2	2
13	0444020	Quick-coupling 1/2" – male	2	2
14	1068890	Pin Ø25x135mm.	1	1
15	1044600	Disc Ø26x8mm.	1	1
16	0378600	Ring split Ø11x40	3	3
17	1055460	Pin Ø28x120mm.	2	2
18	1102310	Spindle tube 80x80	2	2
19	1080520	Spindle M22x350mm.	4	4
20	1102290	Spindle tube 70x70, left (18" wheel)	1	1
		(to machine nr 30811)		
	1102300	Spindle tube 70x70, right (18" wheel)	1	1
		(to machine nr 30811)		
20A	1103506	Spindle tube with hub 70x70, left (18" wheel)	1	1
		(from machine nr 30812)		
	1103505	Spindle tube with hub 70x70, right (18" wheel)	1	1
		(from machine nr 30812)		
	0393827	Hub caps		
	0478988	Bearing 30205		
	0394861	Hubnut		
	0394860	Hubbolt		
	0393630	Seal		
	0478990	Bearing 30207		
21	1100360	Spindle tube 50x50, left (16" wheel)	1	
		(to machine nr 30612)		
	1100540	Spindle tube 50x50, right (16" wheel)	1	
		(to machine nr 30612)		
	1103497	Spindle tube 70x70, left (16" wheel)	1	
		(from machine nr 30613)		
	1103498	Spindle tube 70x70, right (16" wheel)	1	
		(fra maskinnr 30613)		
	1102290	Spindle tube 70x70, left (18" wheel)		2
		(to machine nr 30811)		
	1102300	Spindle tube 70x70, right (18" wheel)		2
		(to machine nr 30811)		
21A	1103506	Spindle tube with hub 70x70, left (18" wheel)		1
		(from machine nr 30812)		
	1103505	Spindle tube with hub 70x70, right (18" wheel)		1
		(from machine nr 30812)		
	0393827	Hub caps		
	0478988	Bearing 30205		
	0394861	Hubnut		
	0394860	Hubbolt		
	0393630	Seal		
	0478990	Bearing 30207		
22	0272310	Disc Ø20	4	4
23	1036260	Handle	4	4
24	0371660	Retaining pin Ø8x32mm.	4	4
25	0431980	Locking bracket Ø5	4	4
26	0235950	Hexagon bolt M16x150mm. 8.8	8	8
27	1102360	Clamp	2	2
28	0272290	Disc Ø16	16	16
29	0264090	Lock nut M16	16	16
30	1101681	Spindle tube 60x60 (16" wheel)	2	
		(to machine nr 30612)		
	1101682	Spindle tube 80x80 (18" wheel)	2	
		(from machine nr 30613)		
	1101682	Spindle tube 80x80 (18" wheel)		2
31	0382160	U-bolt M16 100x100	4	4
32	0394200	Complete wheel 18,5x8,5x8 6 PLY	2	2
		(to machine nr 30811)		
	0394230	Complete wheel 18,5x8,5x8 6 PLY	2	2
		(from machine nr 30812)		
33	0394100	Complete wheel 16,5x6,5x8 6 PLY	2	
	0394200	Complete wheel 18,5x8,5x8 6 PLY		2
		(to machine nr 30811)		
	0394230	Complete wheel 18,5x8,5x8 6 PLY		2
		(from machine nr 30812)		

Side frame 12 m



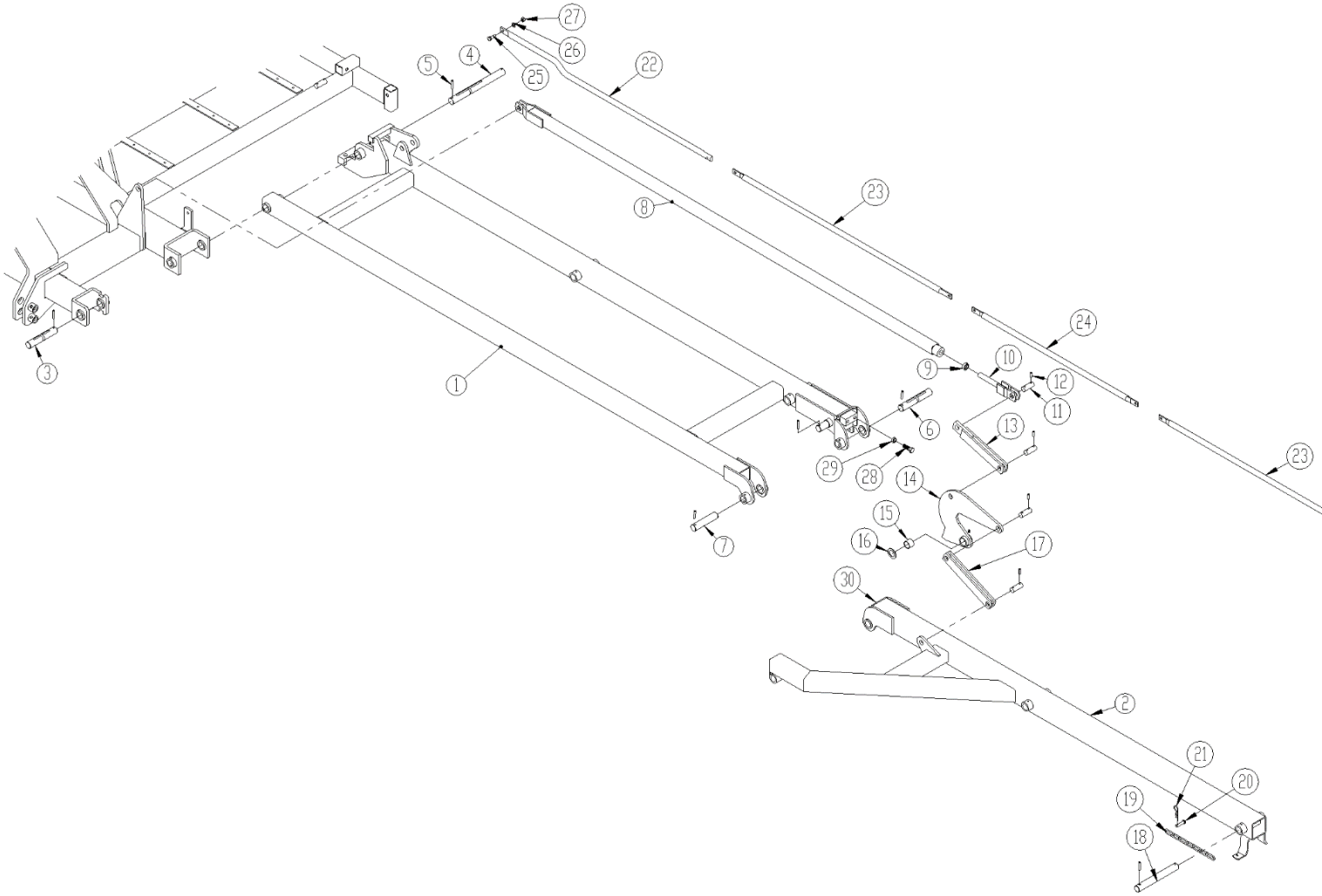
Pos	Part No.	Description	Number
1	1101170	Inner side frame, left	1
	1101180	Inner side frame, right	1
2	1101360	Outer side frame, left	1
	1101370	Outer side frame, right	1
3	1101700	Pin Ø35x365mm.	2
4	0371701	Retaining pin Ø8x50mm.	14
5	0432100	Lubricator nipple M6	4
6	0236110	Hexagon bolt M20x50mm. 8.8	4
7	0261392	Counter nut M16x2,0mm.	8
8	1101730	Pin Ø35x185mm.	2
9	1100220	Pin Ø35x255mm. (to machine no 29513)	6
	1103474	Pin Ø35x279mm. (from machine no 29514)	6
10	1101640	Pin Ø35x205mm.	2
11	1101660	Chain (to 1/11 2014)	2
	1103700	Chain (from 1/11 2014)	2
11a	0408670	D-Shackle 8m (from 1/11 2014)	2
11b	0433480	Bardun tightener (from 1/11 2014)	2
12	1011520	Pin Ø12x50mm.	4
13	0377400	Retaining pin Ø4	4
14	1101510	Stay	2
15	1101620	Pin Ø25x65mm.	10
16	0371701	Retaining pin Ø8x50mm.	20
17	0235810	Hexagon bolt M16x50mm. 8.8	4
18	0261430	Counter nut M24x3,0mm.	2
19	1101550	Stay bracket	2
20	1101580	Stay link	2
21	1101480	Locking claw	2
22	0475090	Sliding shell Ø35/39/30	2
23	0272500	Disc Ø55/36,5x3mm.	2
24	1101610	Stay bracket	4
25	1101650	Stay, short	2
26	1101710	Stay	2
27	1101720	Offset stay	2
28	0235350	Hexagon bolt M12x35mm. 8.8	6
29	0272270	Disc Ø12	18
30	0264070	Lock nut M12	6

Frame 15 m



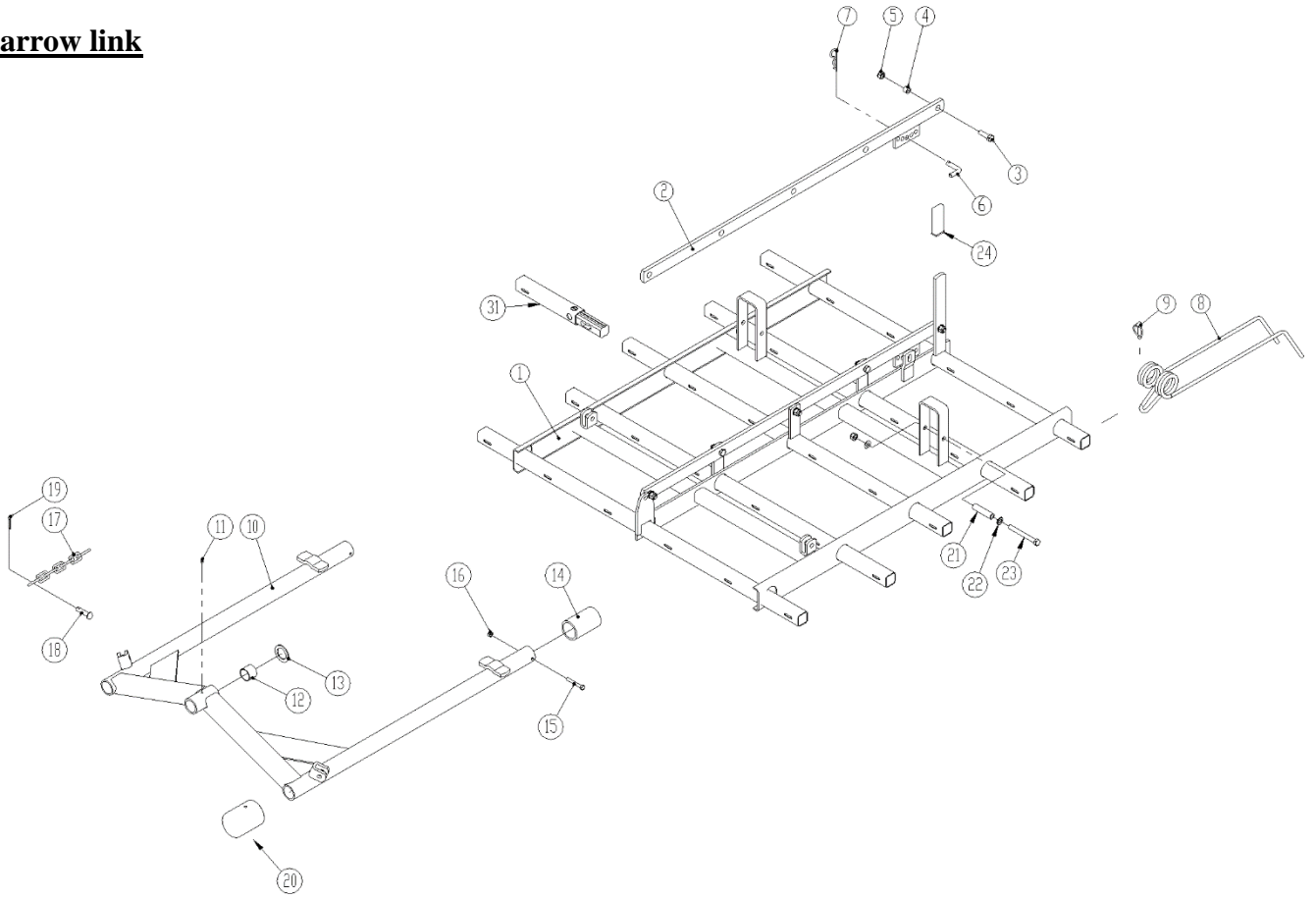
Pos	Part No.	Description	15m	15m HD
1	1103590	Frame	1	1
2	69525105C	Pin Ø25/Ø32 L=105 mm	1	1
3	69528105C	Pin Ø28/Ø36 L=105 mm	2	2
4	0378600	Ring split Ø11x40	3	3
5	1100170	Stay rod	2	2
6	1027060	Pin Ø16x56mm.	2	2
7	0377400	Retaining pin Ø4	2	2
8	0462920	Hydraulic cylinder Ø90/40 – length of stroke 380mm.	2	2
9	1051110	Pin Ø25x125mm.	2	2
	1051120	Pin Ø25x145mm.	2	2
10	0371701	Retaining pin Ø8x50mm	4	4
11	0446120	Fitting, 90angle 3/8" conic x 1	4	4
12	0454657	Hose 2400mm. 3/8"	2	2
13	0454580	Hose 2000mm. 3/8"	2	2
14	0444490	Hexagon nipple 1/2" – 1/4"	4	4
15	0449070	Bounded seal 1/2"	4	4
16	0444020	Quick-coupling 1/2" – male	4	4
17	1160762	Spindle tube 80x80 mm	2	2
18	1160759	Spindle tube with hub 70x70 mm (20" wheel)	2	2
18a	0395436	Hub caps		
18b	0479010	Bearing 30210		
18c	0395291	Hubnut		
18d	0395271	Hubbolt		
18e	0395433	Seal		
18f	0478990	Bearing 30207		
18g	0395438	Dust cap		
18h	0395242	Castellated nut M27x1,5mm DIN 935 TVZ		
19	0394300	Complete wheel 20x8.00-10 A8 -185	2	2
20	1100390	Bracket	2	2
21	0235950	Bolt M16x150mm	8	8
22	0272290	Disc Ø16	32	32
23	0264090	Lock nut M16	24	24
24	1103594	Spindle tube 80x80 mm	4	4
25	1103506	Spindle tube with hub 70x70, left (18" wheel)	2	2
	1103505	Spindle tube with hub 70x70, right (18" wheel)	2	2
25a	0393827	Hub caps		
25b	0478988	Bearing 30205		
25c	0394861	Hubnut		
25d	0394860	Hubbolt		
25e	0393630	Seal		
25e	0478990	Bearing 30207		
26	0394230	Complete wheel 18,5x8,5x8 6 PLY	4	4
27	0382160	U-bolt M16x100x100x100mm	8	8
28	0431980	Locking bracket Ø5	6	6
29	1080520	Spindle	6	6
30	0272310	Disc Ø20	6	6
31	1036260	Handle	6	6
32	0371660	Retaining pin Ø8x32mm.	6	6

Side frame 15 m

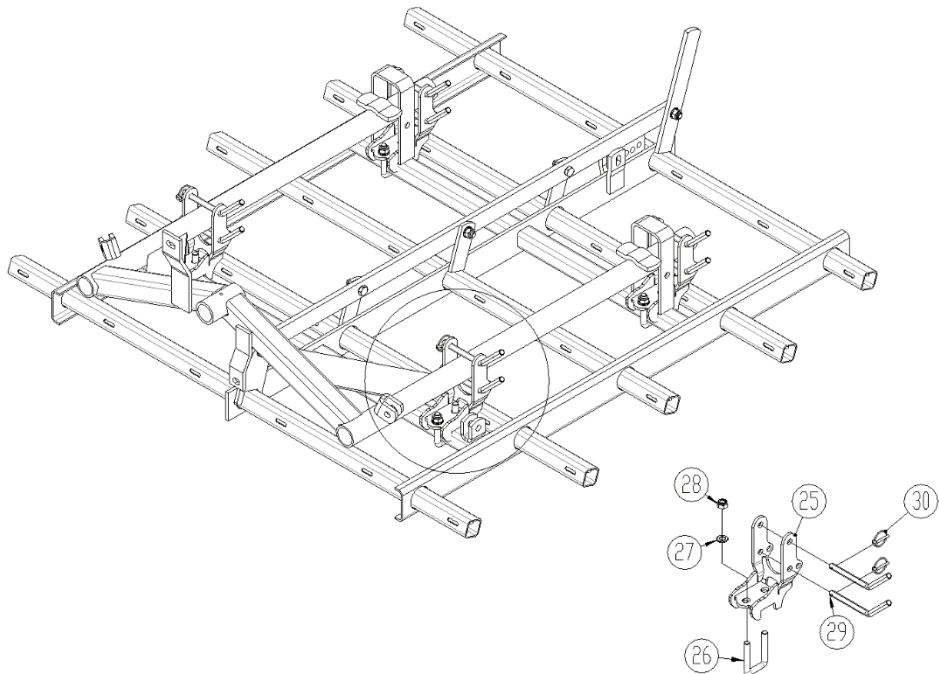


Pos	Part No.	Description	Number
1	1103570	Inner side frame, left	1
	1103571	Inner side frame, right	1
2	1103572	Outer side frame, left	1
	1103573	Outer side frame, right	1
3	1101730	Pin Ø35x185mm.	2
4	1101700	Pin Ø35x365mm.	2
5	0371701	Retaining pin Ø8x50mm	
6	1101640	Pin Ø35x205mm.	2
7	1103796	Pin Ø35x158 mm	3
8	1103588	Stay	2
9	0261430	Counter nut M24x3,0mm.	2
10	1101550	Stay bracket	2
11	1101620	Pin Ø25x65mm.	8
12	0371701	Retaining pin Ø8x50mm.	8
13	1101580	Stay link	2
14	1101480	Locking claw	2
15	0475090	Sliding shell Ø35/39/30	2
16	0272500	Disc Ø55/36,5x3mm.	2
17	1101610	Stay bracket	4
18	1103474	Pin Ø35x279mm	8
19	1103700	Chain	2
19a	0408670	D-Shackle 8m	2
19b	0433480	Bardun tightener	2
20	1011520	Pin Ø12x50mm.	4
21	0377400	Retaining pin Ø4	4
22	1103818	Stay, offset	2
23	1101710	Stay	4
24	1103602	Stay	2
25	0235350	Hexagon bolt M12x35mm. 8.8	8
26	0272270	Disc Ø12	16
27	0264070	Lock nut M12	8
28	0235810	Hexagon bolt M16x50mm. 8.8	2
29	0261392	Counter nut M16x2,0mm.	2
30	0432100	Lubricator nipple M6	2

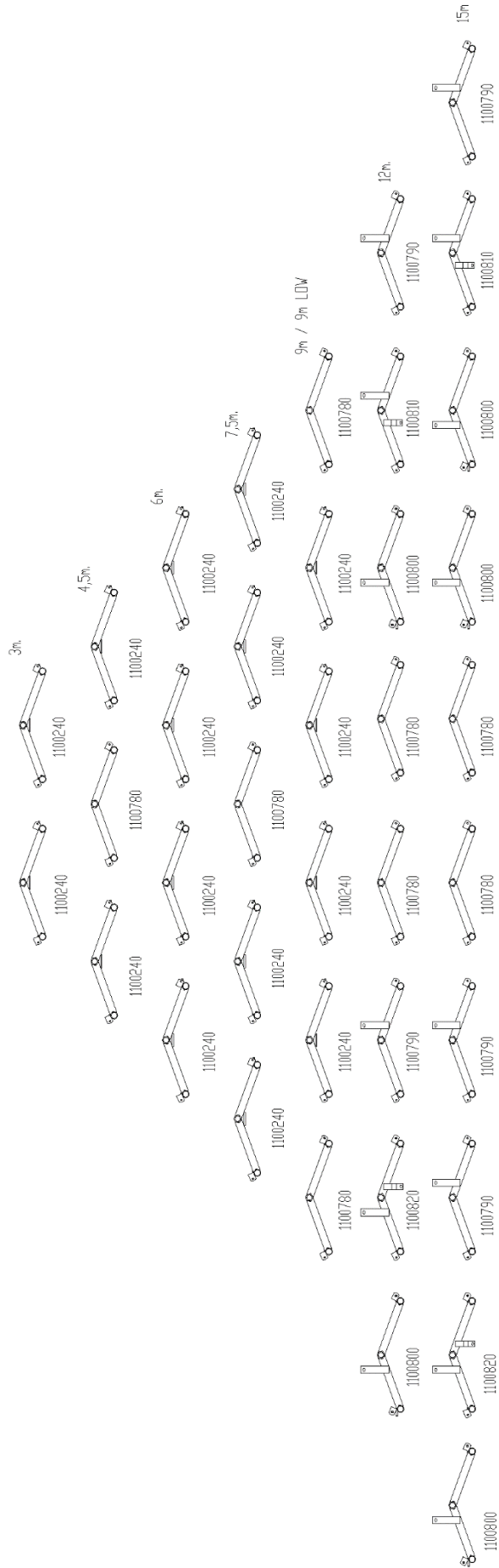
Harrow link



Fixation brackets



Tilt link survey



Harrow link (Weeder)

Pos.	Part No.	Description	3,0	4,5	6,0	7,5	9,0	12,0	15,0
1	1101880	Harrow link	2	3	4	5	6	8	10
2	1100670	Adjusting rod	2	3	4	5	6	8	10
3	0235360	Hexagon bolt M12x40mm. 8.8	10	15	20	25	30	40	50
4	1012000	Distance bush Ø18xØ13x13mm.	10	15	20	25	30	40	50
5	0264070	Lock nut M12	14	21	28	35	42	56	70
6	1100490	Pin Ø12x95mm.	2	3	4	5	6	8	10
7	0377400	Retaining pin Ø4	2	3	4	5	6	8	10
8	0426690	Tine, Ø7x450mm.	60	90	120	150	180	240	300
	0426700	Tine, Ø7x600mm.	60	90	120	150	180	240	300
9	0378600	Ring split Ø11x40mm.	60	90	120	150	180	240	300
10		See page 35/37	-	-	-	-	-	-	-
11	0432100	Lubricator nipple M6	2	3	4	5	6	8	10
12	0475090	Sliding shell Ø35xØ39x30mm.	4	6	8	10	12	16	20
13	0272500	Disc Ø55xØ36,5x3mm.	2	3	4	5	6	8	10
14	1101740	Plastic pipe Ø63x5,8x100mm.	4	6	8	10	12	16	20
15	0234830	Hexagon bolt M8x60mm. 8.8	4	6	8	10	12	16	20
16	0264050	Luck nut M8	4	6	8	10	12	16	20
17	1101761	Chain, 7 link	4	6	8	10	12	16	20
18	1011520	Pin Ø12x50mm.	8	12	16	20	24	32	40
19	0373310	Split pin Ø5x32mm.	8	12	16	20	24	32	40
20	1103511	Is used on all Tilt link (1100240 with long side tupe)	2	2	6	6	8	0	0
21	1102250	Bushing	4	6	8	10	12	16	20
22	0272270	Disc Ø12	8	12	16	20	24	32	40
23	0235470	Bolt M12x110	4	6	8	10	12	16	20
24	0489090	Handle, plastic	4	6	8	10	12	16	20
31	1103875	Bar (L)	1	1	1	1			
	1103886	Bar (R)	1	1	1	1			

Harrow link (Weeder HD)

Pos.	Part No.	Description	3,0	4,5	6,0	7,5	9,0	12,0	15,0
1	1103476	Harrow link	2	3	4	5	6	8	10
2	1100670	Adjusting rod	2	3	4	5	6	8	10
3	0235360	Hexagon bolt M12x40mm. 8.8	10	15	20	25	30	40	50
4	1012000	Distance bush Ø18xØ13x13mm.	10	15	20	25	30	40	50
5	0264070	Lock nut M12	14	21	28	35	42	56	70
6	1100490	Pin Ø12x95mm.	2	3	4	5	6	8	10
7	0377400	Retaining pin Ø4	2	3	4	5	6	8	10
8	0426700	Tine, Ø7x600mm.	60	90	120	150	180	240	300
	0426701	Tine, Ø9x600mm.	60	90	120	150	180	240	300
	0426701	Tine, Ø9x600mm.	24	36	48	60	72	96	120
	0426700	Tine, Ø7x600mm.	36	54	72	90	108	144	180
9	0378600	Ringsplit Ø11x40mm.	60	90	120	150	180	240	300
10	-	See page 35/37	-	-	-	-	-	-	-
11	0432100	Lubricator nipple M6	2	3	4	5	6	8	10
12	0475090	Sliding shell Ø35xØ39x30mm.	4	6	8	10	12	16	20
13	0272500	Disc Ø55xØ36,5x3mm.	2	3	4	5	6	8	10
14	1101740	Plastic pipe Ø63x5,8x100mm.	4	6	8	10	12	16	20
15	0234830	Hexagon bolt M8x60mm. 8.8	4	6	8	10	12	16	20
16	0264050	Luck nut M8	4	6	8	10	12	16	20
17	1101761	Kæde, 7 led	4	6	8	10	12	16	20
18	1011520	Nagle Ø12x50mm.	8	12	16	20	24	32	40
19	0373310	Split pin Ø5x32mm.	8	12	16	20	24	32	40
20	1103511	Is used on all Tilt link (1100240 with long side tupe)	2	2	6	6	8	0	0

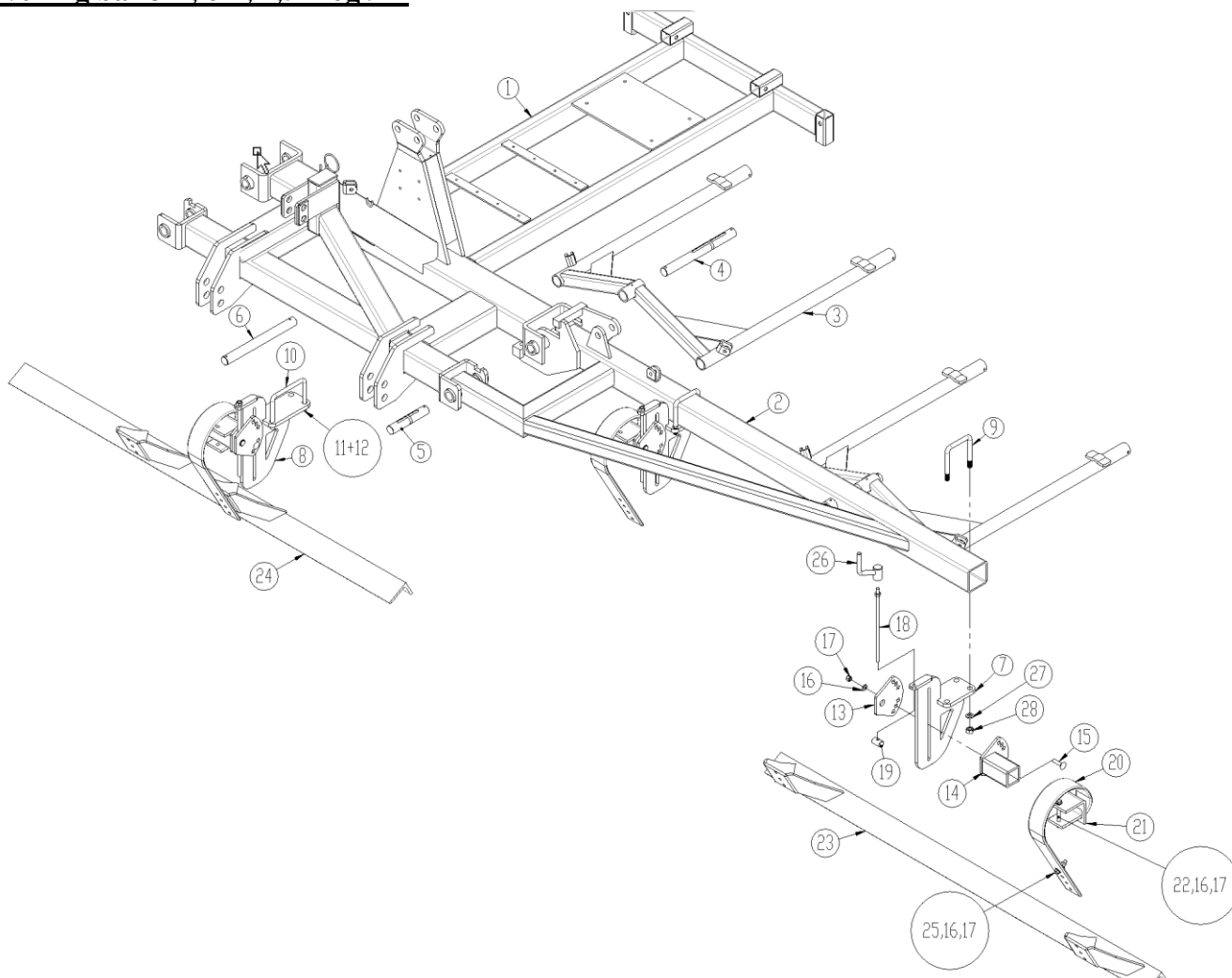
Pos.	Part No.	Description	3,0	4,5	6,0	7,5	9,0	12,0	15,0
21	1102250	Bushing	4	6	8	10	12	16	20
22	0272270	Disc Ø12	8	12	16	20	24	32	40
23	0235470	Bolt M12x110	4	6	8	10	12	16	20
24	0489090	Handle, plastic	4	6	8	10	12	16	20
31	1103888	Bar (L)	1	1	1	1			
	1103964	Bar (R)	1	1	1	1			

Fixation brackets

Pos.	Part No.	Description	Quantity per Harrow link
25	1103834	Fixation brackets	4
26	0382120	U-bolt M12x40x40x40	4
27	0272270	Disc Ø12	8
28	0264070	Lock nut M12	8
29	69512094A	Pin Ø12 L=94	8
30	0378200	Ringsplit, Ø4,5mm	8

Overview Tilt link

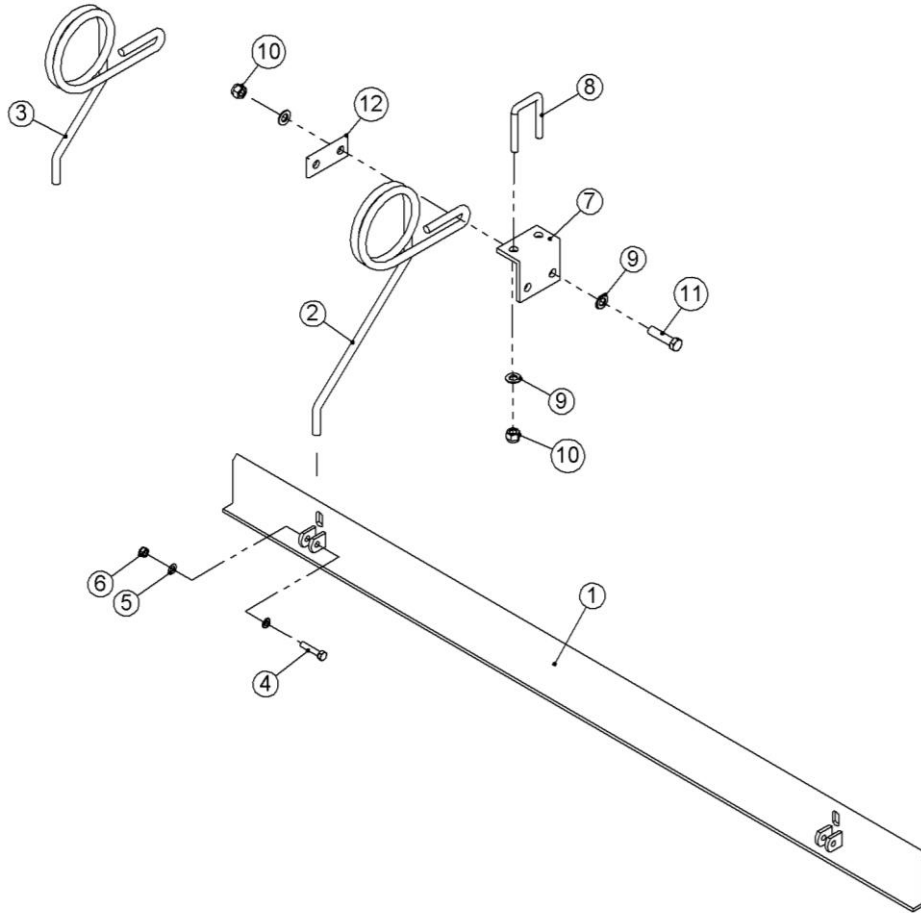
Part No.	Description	3,0	4,5	6,0	7,5	9,0	12,0	15,0
1100240	Tilt link (short side tube) (to machine no 30859)	2	2	4	4	4		
1100240	Tilt link (long side tube) (from machine no 30860)	2	2	4	4	4		
1100780	Tilt link		1		1	2	2	2
1100790	Tilt link						2	3
1100800	Tilt link						2	3
1100810	Tilt link						1	1
1100820	Tilt link						1	1

Levelling bar 3m, 6m, 7,5m og 9m


Pos.	Part No.	Description	3,0m	6,0m	7,5m	9,0m
1	1103604	Frame	1	1		1
	1103851	Frame			1	
2	1103562	Side frame (L) (to January 2024)		1		
	1103567	Side frame (R) (to January 2024)		1		
	1103849	Side frame (L) (to January 2024)			1	
	1103853	Side frame (R) (to January 2024)			1	
	1103565	Side frame (L) (to January 2024)				1
	1103566	Side frame (R) (to January 2024)				1
	1103996	Side frame (L) (from January 2024)		1		
	1103995	Side frame (R) (from January 2024)		1		
	1103997	Side frame (L) (from January 2024)			1	
	1103998	Side frame (R) (from January 2024)			1	
	1103991	Side frame (L) (from January 2024)				1
	1103994	Side frame (R) (from January 2024)				1
3	1100240	Tilt link	2	4	5	6
4	1101700	Pin Ø35 L=365mm	2	4	4	6
5	1101730	Pin Ø35 L=189mm		2	2	2
6	1103882	Pin Ø35 L=365mm			1	
7	675170025	Bracket f/adjustment (100x100 rør)		4	4	4
8	1103544	Bracket f/adjustment (100x150 rør)	2	2	2	2
9	690110404	U-bolt M18x100x100x100mm		8	8	8
10	0382800	U-bolt M16x100x150x100mm	4	4	4	4
11	0272290	Disc Ø16	8	24	24	24

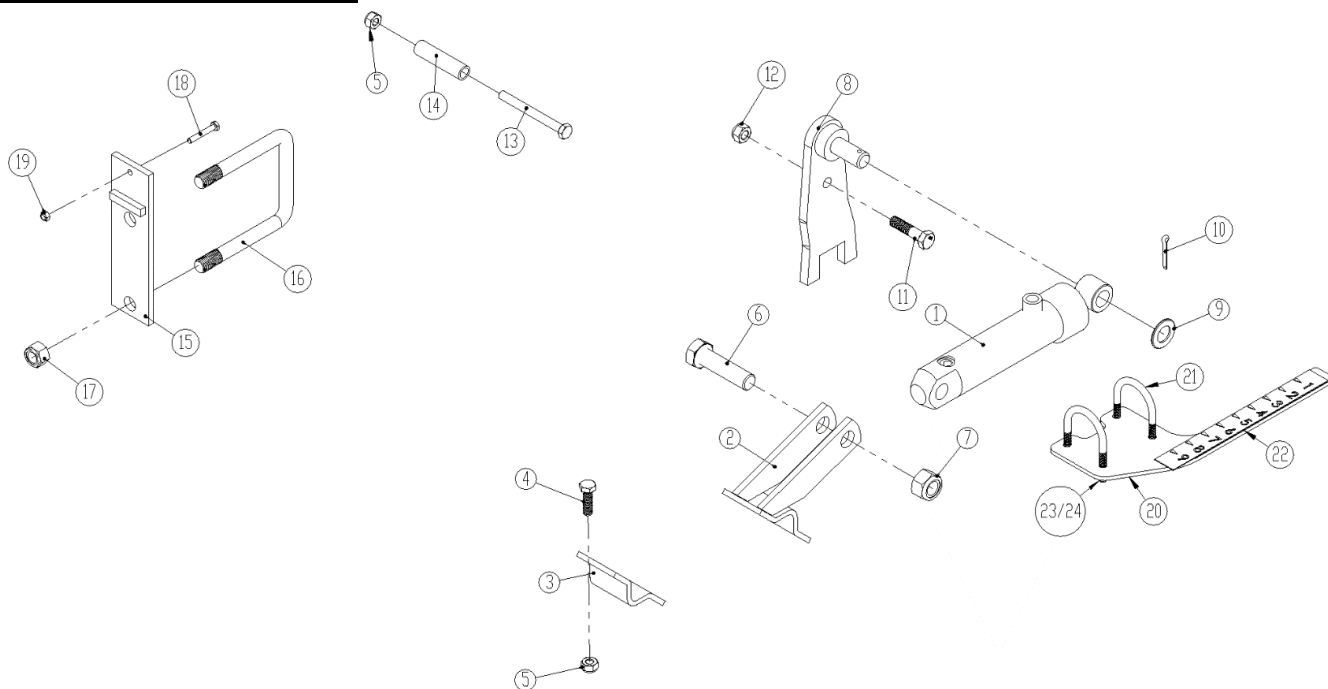
Pos.	Part No.	Description	3,0m	6,0m	7,5m	9,0m
12	0264090	Lock nut M16	8	24	24	24
13	675170024	Clamping plate	2	6	6	6
14	675170026	Clamping plate	2	6	6	6
15	0248680	Carriage bolt M12x50mm	4	12	12	12
16	0272270	Disc Ø12	10	36	36	36
17	0264070	Lock nut M12	5	18	18	18
18	630327217	Threaded rod f/levelling bar (to machine no 37762)	2	6	6	6
	1103879	Threaded rod f/levelling bar (from machine no 37763)	2	6	6	6
19	675170021	Nut f/ threaded rod	2	6	6	6
20	0422145	Tine 80x10	2	6	6	6
21	0422390	Clamp for tine	2	6	6	6
22	0235470	Bolt M12x110mm	2	6	6	6
23	1103548	Levelling bar (left + right)		2		
	1103864	Levelling bar (left)			1	
	1103863	Levelling bar (right)			1	
	1103554	Levelling bar (left)				1
	1103579	Levelling bar (right)				1
24	1103547	Levelling bar (midt)	1	1	1	1
25	0235380	Bolt M12x50mm	1	6	6	6
26	1103881	Handle (from machine no 37763)	2	6	6	6
27	0272300	Disc Ø18				
28	0264100	Lock nut M18				

Levelling plate

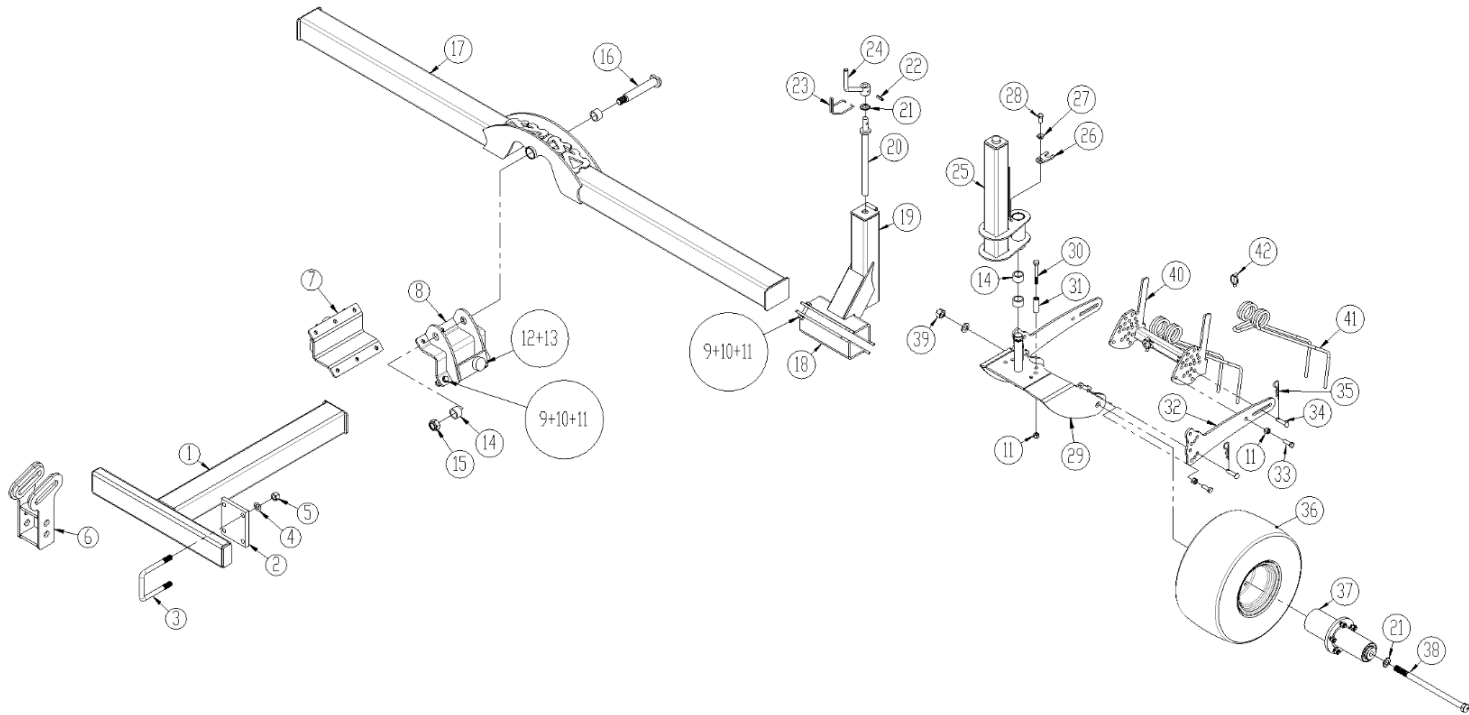


Pos.	Part No.	Description	Per link
1	1102810	Levelling plate	1
2	1102860	Tine, long model	2
3	1102850	Tine, short model	2
4	0234790	Hexagon bolt M8x40mm. 8.8	2
5	0272250	Disc Ø8	4
6	0264050	Lock nut M8	2
7	1102840	Bracket	2
8	0382120	U-bolt M12 40x40	2
9	0272270	Disc Ø12	12
10	0264070	Lock nut M12	8
11	0235370	Hexagon bolt M12x45mm. 8.8	4
12	1012520	Clamp	2

Hydraulic tine adjustment



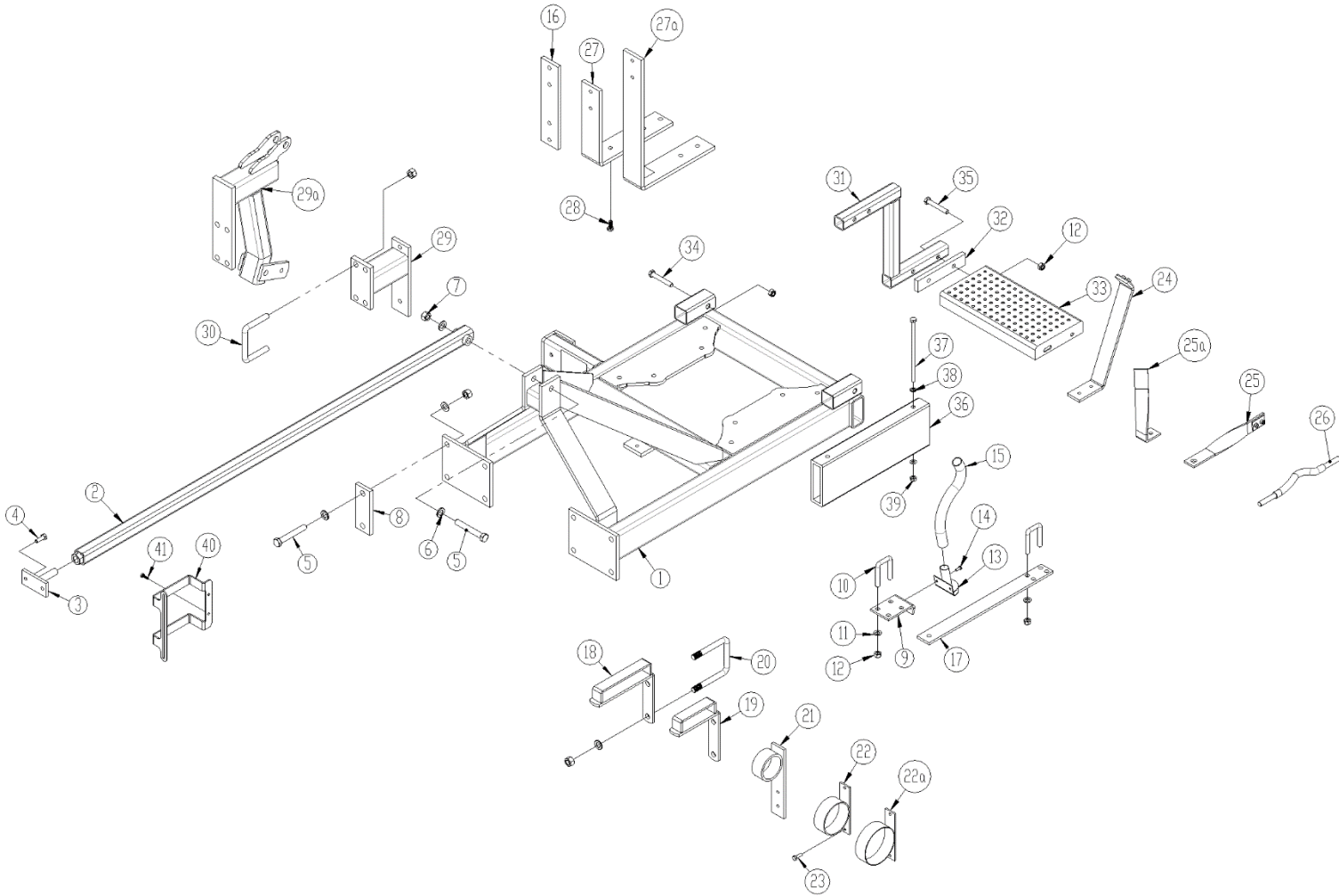
Pos.	Part No.	Description	Number
1	0468200	Hydraulic cylinder Ø40/20 – length of stroke: 99mm.	1
2	1101970	Cylinder bracket	1
3	1101960	Clamp	1
4	0235060	Hexagon bolt M10x35mm. 8.8	2
5	0264060	Lock nut M10	3
6	0236160	Hexagon bolt M20x70mm. 8.8	1
7	0264110	Lock nut M20	1
8	1102000	Cylinder box	1
	1102001	Cylinder box (scale)	
9	0271580	Disc Ø20	1
10	0373310	Split pin Ø5x32mm.	1
11	0235380	Hexagon bolt M12x50mm. 8.8	1
12	0264070	Lock nut M12	2
13	0235470	Hexagon bolt M12x110mm. 8.8	1
14	1102250	Bush Ø18/13x72mm.	1
15	1101940	Bracket for locking valve	1
16	0382160	U-bolt M16 100x100	1
17	0264090	Lock nut M16	2
18	0234370	Hexagon bolt M6x40mm. 8.8	1
19	0264040	Lock nut M6	1
20	1103722	Bracket f/scale	1
21	0384200	U-bracket	2
22	0652560	Transfer	1
23	0272250	Disc Ø8	4
24	0264050	Lock nut M8	4

Wheel set mounted behind


Pos.	Part No.	Description	Number
1	1103674	Bar	1
2	1102360	Clanping plate	2
3	0382900	U-bolt M18x100x100x100	4
4	0272300	Disc Ø18	8
5	0264100	Lock nut M18	8
6	1103681	Console for top link (3m to 12m)	1
	1103819	Console for top link (15m)	1
7	1103730	Clanping plate	1
8	1103677	Clanping plate	1
9	0235400	Bolt M12x60 8,8	6
10	0272270	Disc Ø12	12
11	0264070	Lock nut M12	18
12	0484859	Rubber damper	2
13	0264060	Lock nut M10	2
14	0475307	Inner tension bush EG ø40/30x25mm	6
15	0264130	Lock nut M24	1
16	1103680	Pin Ø30 L=154mm	1
17	1103675	Bar	1
18	1103646	Clanping plate	2
19	1103663	Outer pipe	2
20	1080520	Spindle M22x350	2
21	0272310	Disc Ø20	6
22	0371660	Retaining pin	2
23	0431980	Locking bracket	2
24	1036260	Handle	2
25	1103662	Inner pipe	2
26	1103664	Locking clip	2

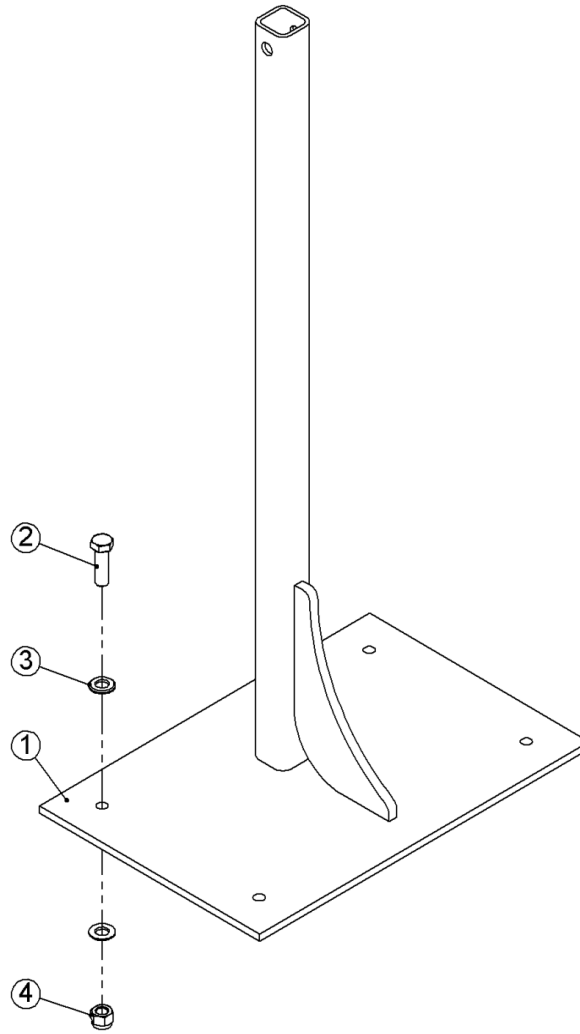
Pos.	Part No.	Description	Number
27	630532600	Lock bush	2
28	0235330	Bolt M12x25 8.8	2
29	1103666	Wheel fork	2
30	0235450	Bolt M12x90 8.8	4
31	1103746	Bushing	4
32	1103731	Flange	2
33	0235350	Bolt M12x35 8.8	4
34	69512040K	Pin Ø12,5 L=40mm	4
35	0377400	Hairpin split Ø4	4
36	0394230	Wheel 18,5x8,5x8 6 PLY	2
37	0394850	Hub	2
	7365028	Bush	
	7365001	Axle	
	7365002	Bushing	
	630949019	Steel washer (offset) Ø45/71,7 mm	
	0394860	Hub bolt M12x1,5 L=36mm	
	0394861	Hub nut M12x1,5	
	690140201	Bearing (Taper roller bearing) ø72mm x ø35mm x 33	
	0379250	Seeger circlip ring I 72 DIN472	
	690140651	Sealing cassette 72-45-14/17	
38	0236320	Bolt M20x360mm 8.8	2
39	0264110	Lock nut M20	2
40	1103736	Tandbulle	2
41	0426700	Tand, Ø7x600mm.	4
42	0378600	Ringsplit Ø11x40mm.	4

Multi-Seeder equipment



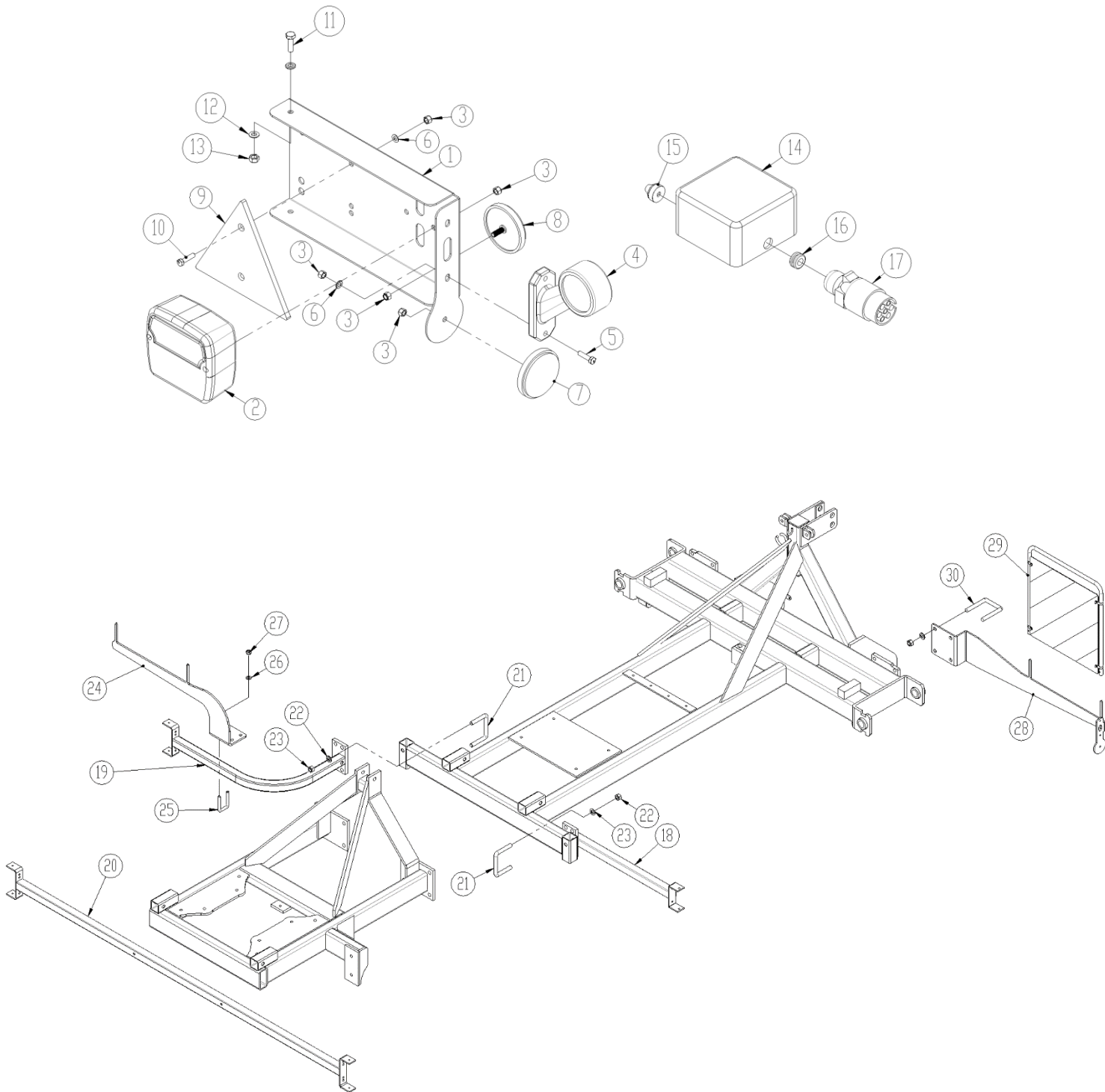
Pos.	Part No.	Description	3,0	4,5	6,0	7,5	9,0	12,0	15m
1	1102510	Frame (w/ground wheel)	-	-	-	-	-	1	1
	1103970	Frame (w hydr. ground wheel)	-	-	-	-	-	1	1
	1103969	Frame (w/RDS)	-	-	-	-	-	1	1
2	1102630	Top bar	-	-	-	-	-	1	1
3	1102870	Guide shaft	-	-	-	1	1	1	1
4	0235050	Hexagon bolt M10x30mm. 8.8	-	-	-	2	2	2	2
5	0235910	Hexagon bolt M16x110mm. 8.8	-	-	-	1	1	1	1
6	0272290	Disc Ø16	-	-	-	4	8	30	30
7	0264090	Lock nut M16	-	-	-	2	4	15	15
8	645000295	Clamp	-	-	-	-	4	4	4
9	1132030	Clamp bracket	4	6	8	10	12	16	16
10	0382120	U-Bolt M12 40x40	14	20	26	32	38	50	50
11	0272270	Disc Ø12	28	40	52	64	76	96	96
12	0264070	Lock nut M12	14	20	26	32	38	48	48
13	0539056A	Spreader plate	4	6	8	10	12	16	16
14	0234280	Hexagon bolt M6x16mm. 8.8	8	12	16	20	24	32	32
15	0539055	Seed hose Ø26 inside – number p. m.	12	18	24	30	36	48	48
16	645000332	Bracket for hydraulic blower	1	1	1	1	1		
17	1139904	Bracket for distributing piece	2	3	4	5	6	8	8
18	1110230	Hose bracket - 135mm				2	4	4	4
18a	1110220	Hose bracket - 100mm.		2	4	4	4	4	4
19	1110240	Hose bracket - 200mm.					2	4	4
20	0382160	U-bolt M16 100x100				2	4	6	6
21	1132080	Hose bracket – inside . Ø74,7						2	2
22	1103300	Hose bracket – inside . Ø100,8	2	2	2	2	2	2	2
22a	1103540	Hose bracket – inside . Ø121	2	2	2	2	2	2	2
23	0230825	Taptite M8x25mm.	4	4	4	4	4	4	4
24	1103050	Cable bracket						1	1
25	645000337	Cable bracket	1	1	1	1	1		-
25a	1241216	Cable bracket	1	1	1	1	1		-
26	0539062	Flexible driving cable – 2,1m.	1	1	1				-
26	0539063	Flexible driving cable – 2,5m.				1	1	1	1
27	1103070	Bracket for hydraulic blower						1	1
27a	1191020	Bracket for hydraulic blower (450L seed hopper)						1	1
28	0235040	Bolt M10x25mm. 8.8						2	2
29	1102990	Bracket for ground wheel	1	1	1	1	1		-
29a	1132953	Bracket for hydr. ground wheel							
30	0382400	U-bolt M16 100x50	2	2	2	2	2		-
31	1102940	Staircase bracket	2	2	2	2	2	2	2
32	1103360	Spacer block	2	2	2	2	2		-
33	0487007	Platform	1	1	1	1	1		-
	1103473	Platform						1	1
34	0235420	Bolt M12x70	4	4	4	4	4	6	6
35	0235440	Bolt M12x80	2	2	2	2	2		-
36	1191021	Spacer 410L tank							
37	0235270	Bolt M10x220mm							
38	0272260	Disc Ø10							
39	0264060	Lock nut M10							
40	1190413	Bracket for sensor							
41	0230290	Tapetite M6x20mm							

Universal-spreader bracket



Pos.	Part No.	Description	Number
1	1103380	Bracket for Universal-spreader	1
2	0235360	Hexagon bolt M12x40mm. 8.8	4
3	0272270	Disc Ø12	8
4	0264070	Lock nut M12	4

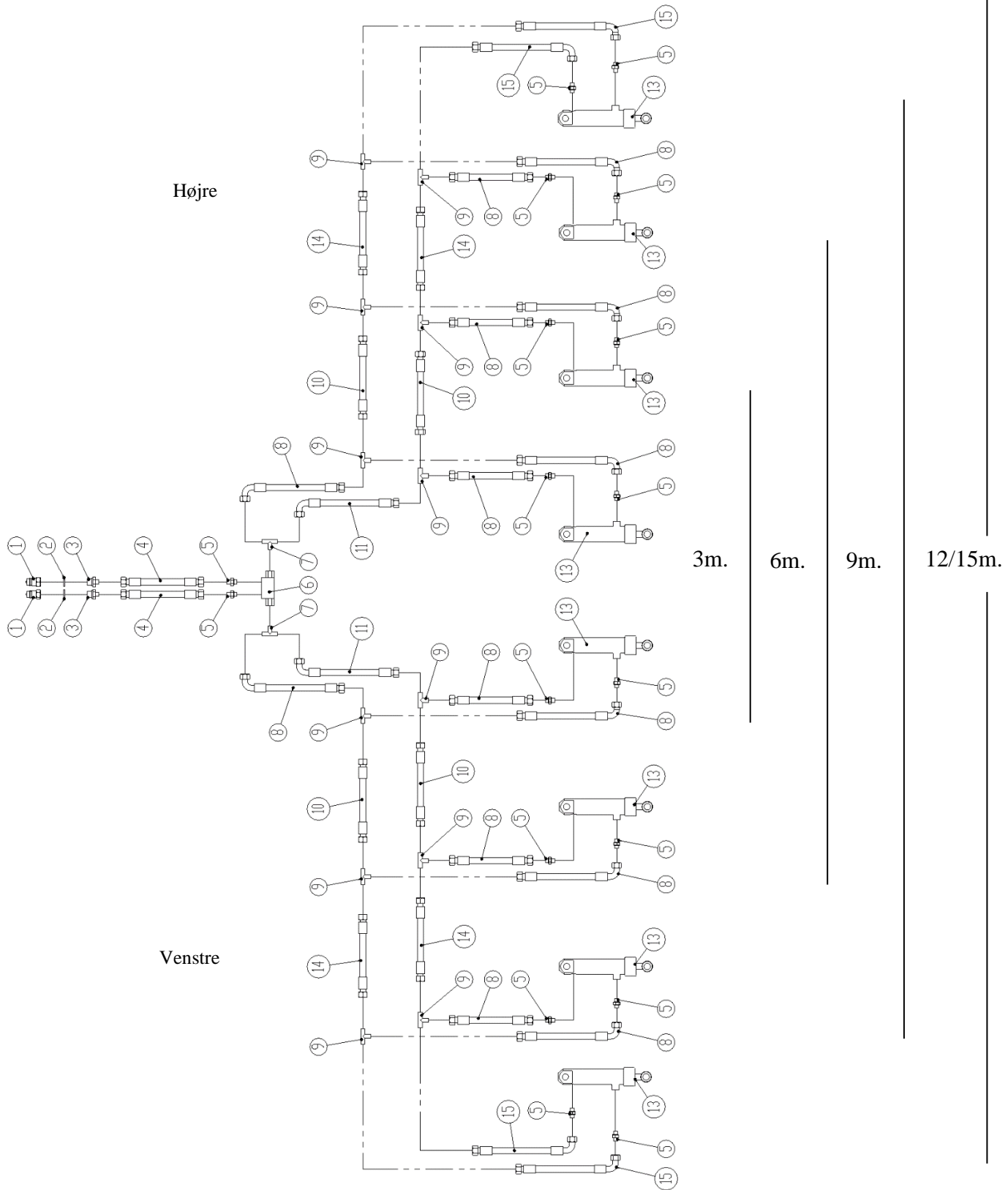
LED- Lighting



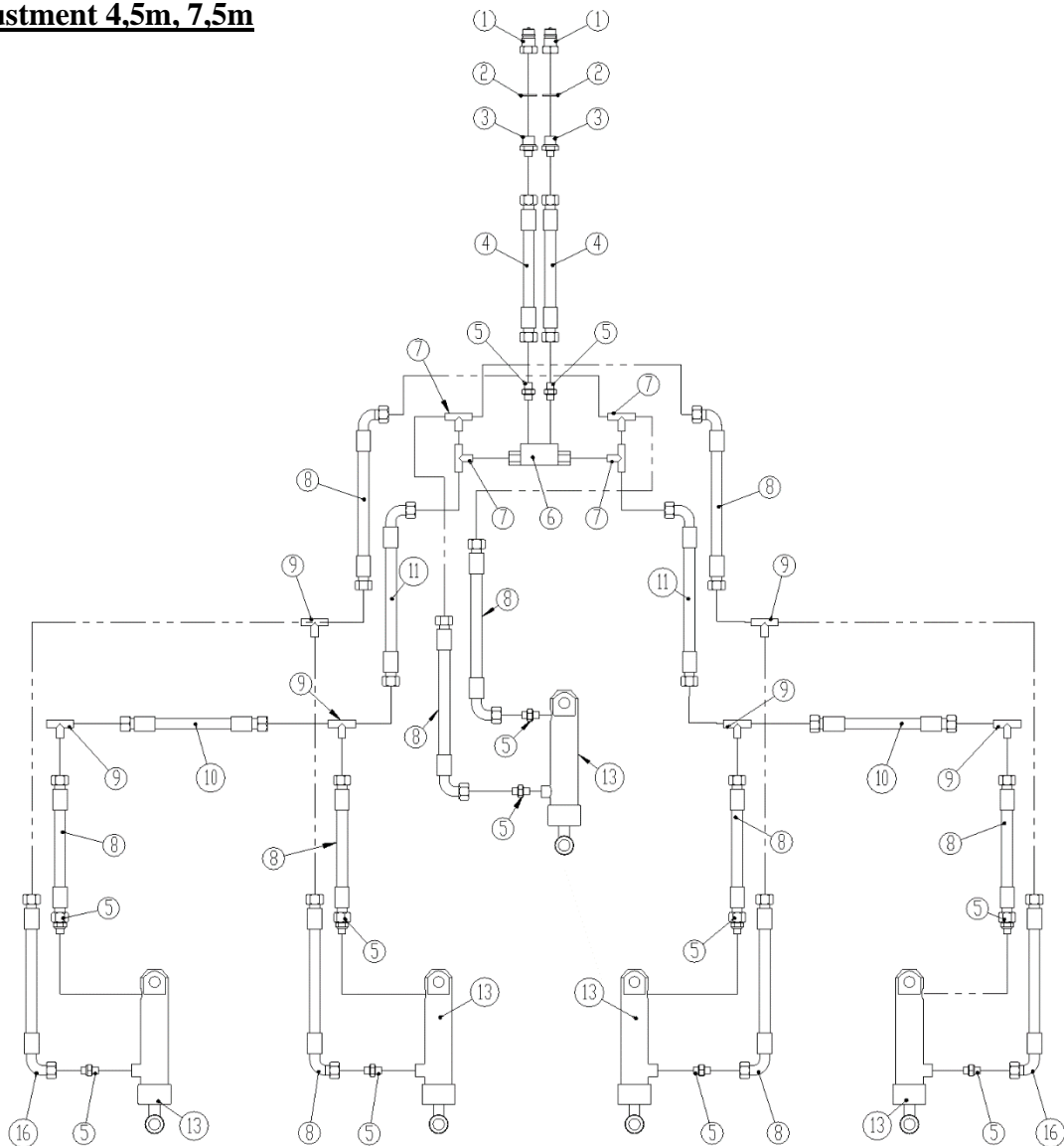
Pos.	Part No.	Description	3,0	4,5	6,0	7,5	9,0	12,0	15,0
1	7357505	Light bracket, left	1	1	1	1	1	1	1
	7357508	Light bracket, right	1	1	1	1	1	1	1
2	7357504	Rear light	2	2	2	2	2	2	2
3	0264030	Self-locking nut M5							
4	7357507	Marking lights (left)	1	1	1	1	1	1	1
	7357509	Marking lights (right)	1	1	1	1	1	1	1
5	0233860	Bolt M5x20							
6	0272230	Disc Ø5							
7	0656240	Reflex (yellow)	2	2	2	2	2	2	2
8	0656250	Reflex (white)	2	2	2	2	2	2	2
9	0521030	Reflex (red)	2	2	2	2	2	2	2
10	0233860	Bolt M5x20							
11	0234330	Bolt M6x20							
12	0272240	Disc Ø6							
13	0264040	Lock nut M6							
14	0520492	Connecting box 105x105x60	1	1	1	1	1	1	1
15	7357545	Rutaseal nipple M20 8-12mm	2	2	2	2	2	2	2
16	7357546	Rubber bushing	1	1	1	1	1	1	1
17	0527140	Plug 7 poles DIN 72 577 – ISO 1724	1	1	1	1	1	1	1
	690160080	Cable 5 x 1 mm ²							
18	1103478	Lightbom	2	2	2	-	2		
19	1103502	Lightbom (Weeder without seed hopper)				2		2	2
20	1103492	Lightbom (Weeder with seed hopper)						1	1
21	0382400	U-bolt M16x100x50	4	4	4	4	4	4	4
22	0264090	Lock nut M16							
23	0272290	Disc 16mm							
24	1103767	Brackets reflectors behind (L)							
	1103636	Brackets reflectors behind (R)							
25	0382120	U-bolt M12x40x40x40							
26	0272270	Disc 12 mm							
27	0264070	Lock nut M12							
28	1103639	Brackets reflectors in front (R)							
	1103638	Brackets reflectors in front (L)							
29	690160074	Warning boards							
30	1045960	U-bolt M16x80x80							

Hydraulic

Tine adjustment 3m, 6m, 9m, 12m, 15m



Pos.	Part No.	Description	3m	6m	9m	9m LOW	12m	15m
1	0444020	Quick-coupling ½" – male	2	2	2	2	2	2
2	0449070	Bounded seal ½"	2	2	2	2	2	2
3	0444490	Hexagon nipple ½" – ¼"	2	2	2	2	2	2
4	0454520	Hose 1600mm. ¾"	2	2	2	2	2	
	90201201	Hose 1675mm. ¾"						2
5	0444500	Hexagon nipple ¼" – 1x conic	x	x	x			
	0444500	Hexagon nipple ¼" – 1x conic (to 28/2 2021)				x	x	
	xxx	Hexagon nipple 3/8" – 1 x conic (from 1/3 2021)				x	x	x
6	0442500	Double locking valve ¼"	x	x	x			
	0442500	Double locking valve ¼" (to 28/2 2021)				x	x	
	0442510	Double locking valve 3/8" (from 1/3 2021)				x	x	x
7	0446540	T-nipple ¼" – 1 x conic	x	x	x			
	0446540	T-nipple ¼" – 1 x conic (to 28/2 2021)				x	x	
	0446530	T-nipple 3/8" – 1 x conic (from 1/3 2021)				x	x	x
8	0454230	Hose 850mm ¼"	x	x	x			
	0454230	Hose 850mm ¼" (to 28/2 2021)				x	x	
	0454233	Hose 850mm 3/8" (from 1/3 2021)				x	x	x
9	0446510	T-nipple ¼"	x	x	x			
	0446510	T-nipple ¼" (to 28/2 2021)				x	x	
	690203115	T-nipple 3/8" (from 1/3 2021)				x	x	x
10	0454558	Hose 1850mm. ¼"	x	x	x			
	0454558	Hose 1850mm. ¼" (to 28/2 2021)				x	x	
	0454561	Hose 1850mm. 3/8" (from 1/3 2021)				x	x	x
11	0454210	Hose 700mm. ¼"	x	x	x			
	0454210	Hose 700mm. ¼" (til 28/2 2021)				x	x	
	0454203	Hose 700mm. 3/8" (from 1/3 2021)				x	x	x
13		See pos. 1 page 41	2	4	6	6	8	10
14	0454500	Hose 1600mm. ¼" (to 28/2 2021)					x	
	90201201	Hose 1675mm. 3/8" (from 1/3 2021)					x	x
15	0454620	Hose 2250mm. ¼" (to 28/2 2021)					x	
	0454622	Hose 2250mm. 3/8" (from 1/3 2021)					x	x

Tine adjustment 4,5m, 7,5m


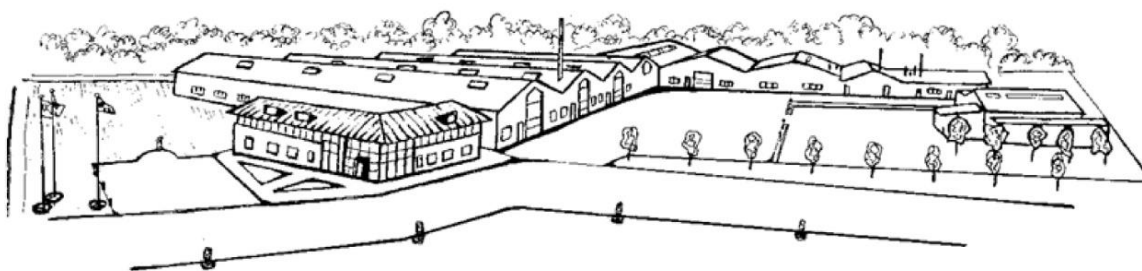
Pos.	Part No.	Description	4,5m	7,5m
1	0444020	Quick-coupling ½" – male	2	2
2	0449070	Bounded seal ½"	2	2
3	0444490	Hexagon nipple ½" – ¼"	2	2
4	0454520	Hose 1600mm. ¾"	2	2
5	0444500	Hexagon nipple ¼" – 1x conic	x	x
6	0442500	Double locking valve ¼"	x	x
7	0446540	T-nipple ¼" – 1x conic	x	x
8	0454230	Hose 850mm ¼"	x	x
9	0446510	T-nipple ¼"	x	x
10	xxx	Hose xxx mm. ¼"	x	x
11	0454210	Hose 700mm. ¼"	x	x
13		See pos. 1 page 41	3	5
16	xxx	Hose xxx mm. ¼"	x	x

Note

Maskiner til vækst
Maskiner til vækst
Maskiner til vækst
Maskiner til vækst
Maskiner til vækst
Maskiner til vækst
Maskiner til vækst



2010
Danmark



Ret til konstruktionsændringer uden varsel forbeholdes.