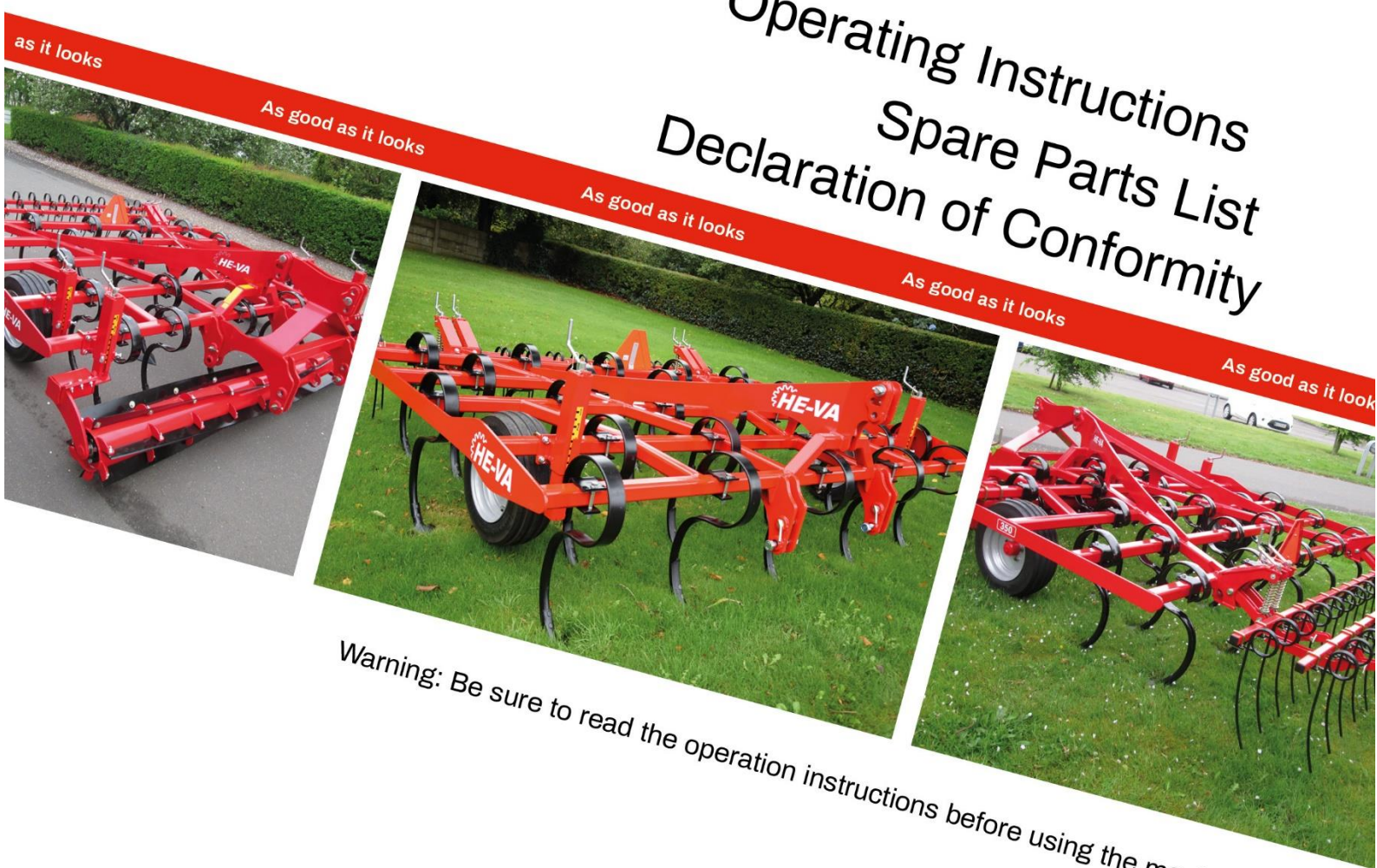


UK

HE-VA

Operating Instructions
Spare Parts List
Declaration of Conformity



Warning: Be sure to read the operation instructions before using the machine.

Penta-Tiller

Rigid models: 3.00 - 3.50 - 4.00 m
Hydraulic models: 4.00 - 5.00 - 6.00 - 7.00 m



N. A. Christensensvej 34
DK-7900 Nykøbing Mors

Tel: 97724288
www.he-va.com

Contents

EC- Declaration of Conformity.....	3
Delivery check.....	4
Machine Description	4
Range of Application	4
Technical specifications.....	4
Safety instructions for Penta-Tiller.....	5
Safety and Instructions on Hydraulics	6
Transport on public roads	6
Front axle load.....	6
Labels on the machine.....	7
Start-up of the machine	8
Generelt.....	8
Attachment and uncoupling (rigid machines).....	8
Attachment and uncoupling (hydr. machines).....	8
Maintenance.....	9
Lubrication.....	9
Spare parts list.....	12
Frame 3m - 4m (rigid).....	12
Frame 4m - 7m (hydr).....	14
Long finger harrow single and double 3m - 7m	16
Roller.....	18
Long finger harrow behind roller 3m - 7m	20
Top-Cutter (rigid).....	22
Top-Cutter (hydraulic)	24
LED-light.....	26
Hydraulics	28
Wing (hydraulic)	28
Note	29
.....	32



EC- Declaration of Conformity

in accordance with the EU Machinery Directive 2006/42/EC
applicable as from December 29th 2009:

HE-VA ApS
N. A. Christensensvej 34,
DK-7900 Nykøbing Mors

hereby confirms that the following machine has been manufactured in accordance with the Council
Directive 2006/42/EC.

In addition, the following harmonized EU standard has been used:
ISO 12100 Machine safety, general design principles, risk assessment and risk reduction.

The declaration comprises the following machine:

:
Penta-Tiller
3,0m – 3,5m – 4,0m fast
4,0m – 5,0m – 6,0m – 7,0m hydr

Nykøbing d. 06. oct 2022


Villy Christiansen

The undersigned is furthermore authorized to compile technical documentation for the above
machine.

Delivery check

Upon delivery to the dealer/supplier as well as to the customer, check the Disc-Roller XL Contour for possible damages.

Machine Description

Range of Application

Penta-Tiller is a versatile harrow that adapts to the needs and wishes of the farmer and is ideal for mechanical weed control. The ideal harrow for false seedbeds and weed control in stubble. The 5-bar harrow has an optimal passage. This prevents residues etc. from sticking.

70x12 mm tines make the Penta-Tiller extremely versatile, with the option of fitting wing shares as standard for full penetration or a standard wear tip for deeper working of the soil.

This means that the Penta-Tiller can be supplied with a free choice between the two types of tip, depending on the farmer's needs and wishes. If the need for the other tip arises, it can be subsequently (or simultaneously) purchased as extra equipment, allowing the farmer to change tips. This gives the farmer two harrows in one.

Technical specifications

Model	3.0 m rided	3.5 m rided	4.0 m rided	4.0 m hydr.	5.0 m hydr.	6.0 m hydr.	7.0 m hydr.
Working width	3m	3,5m	4m	4m	5m	6m	7,0m
Transport height				2,30	2,80	3,30	3,80
Transport width	3m	3,5m	4m	2,48m	2,48m	2,48m	2,48m
Power requirement HP	70-120	80-150	90-180	90-180	110-220	130-240	150-260
Requirement - double acting oil outlets				1	1	1	1
No. Of tines	21	25	29	29	36	43	50
Weight	1360kg	1470kg	1580kg	2230kg	2340kg	2450kg	2560kg

Penta-Tiller is in conformance with DS/ISO 11001-1, three-point mounted.

Safety instructions for Penta-Tiller

Do not start-up the machine if there are persons in exposed positions* within a hazardous area**.

When persons are in exposed positions (e.g. in connection with adjustment, maintenance, attachment, and uncoupling), the following conditions must be observed:

1. The machine must be lowered to firm ground.
2. The hydraulics must be relieved.
3. The tractor must be stopped, and the key removed from the ignition switch.
4. The driver must ensure that no persons are staying in exposed positions during the operation.

* Person in exposed position: Any person who is staying wholly or partly within a hazardous area.

** Hazardous area: On and under the machine within a distance of 4 m from the machine.

Most accidents that happen in connection with the operation, transport and maintenance of machines are caused by non-compliance with the most elementary safety conditions.

Therefore, it is vital that anybody working at the machine carefully complies with the safety instructions as well as other instructions applying to the machine.

The machine should only be operated, maintained, and repaired by persons, who are familiar with this work and who are further familiar with the possible elements of danger with this particular machine.

ATTENTION !! Rotary parts and loose clothes are a dangerous combination.

IMPORTANT !! In connection with the risk of parts falling down, it may endanger the lives of persons staying on the base frame of the machine, when it is operated attached to a tractor.

IMPORTANT !! In connection with transport and machine storage, the safety lock must be activated

Safety and Instructions on Hydraulics

1. The maximum working pressure is 225 bar.
2. It is advisable to label the attachment parts at hydraulic connections between the tractor and the tool in order to eliminate incorrect operation!
3. When checking for hydraulic leaks, use suitable safety wear (eye protectors, gloves, etc.) High-pressure hydraulic oil may penetrate the skin and cause dangerous injuries. In case of injury, consult a doctor immediately. **RISK OF INFECTION!**
4. Before operating the hydraulics, lower the machine to firm ground. Relieve the hydraulics, stop the motor, and remove the ignition key.
5. Check the hydraulic hoses on a regular basis, however, every six months as a minimum due to any cracks, wear, and tear, etc. Replace any defective hoses immediately.

The life of hydraulic hoses is maximum 5 years.
New hydraulic hoses must meet the manufacturer's requirements.

Transport on public roads

Check before transport on public roads that the attachment of the machine at the tractor is in accordance with the local rules and regulations in force (permitted total weight, permitted axle load, transport width, lights, warning signs, etc.).

Front axle load

After the attachment of the machine and at maximum load, the driving properties of the tractor must be ensured. Check that the front axle is sufficiently loaded. As a minimum, the front axle load must be 20% of the tractor weight. Permitted axle load and permitted total weight for the tractor must always be observed.

NB! The driving, controlling and braking properties are affected by the attached machine combination

Labels on the machine



Study the Operating Instructions thoroughly before any operation of the machine and observe all safety instructions.



Plate with number and year of manufacture.

IMPORTANT!

All bolts must be tightened after the first few hours of operation, otherwise our guarantee will not apply.

IMPORTANT!

Resserrer tous les boulons et écrous après la première mise en marche. Le cas échéant nos obligations de garantie seront à considérer comme nulles.

WICHTIG!

Alle Muttern nach kurzem Gebrauch nachziehen. Bei Nichtbeachtung entfallen Gewährleistungsansprüche.

VIGTIGT!

Efterspænd alle møtrikker efter kort tids brug. Hvis dette ikke overholdes, bortfalder vore garantiforpligtelser.

Tighten up all bolts regularly. If this is not performed, our guarantee obligations will no longer apply.



Take care that no persons are within the machine's hazardous area during the unfolding and folding procedure

Start-up of the machine

Generelt

Hydraulic Hose Colour scheme	
Colour (Cable ties)	Function
Red	Trailing wheels height adjustment
Blue	wing folding
Yellow	Roller depth adjustment
Green	Disc Depth Adjustment
Black	Hydraulic automatic release system

Attachment and uncoupling (rigid machines)

1. Under normal circumstances attach the tractor in the lowest lifting points of the machine both as regards the lifting arms and the top link.
2. When the machine is to be parked and uncoupled from the tractor, it is important, that the roller is placed in the lowest position, so that the machine is placed stably.


Attachment and uncoupling (hydr. machines)

1. Be aware that the machine is to be attached und uncoupled to the tractor in transport position.
2. When the machine is hanging on the tractor, the support stands be raised to the top Position
3. The roller has to be placed in the lowest position otherwise problems might occur during the folding.

From transport to working position:

1. The machine is to be raised to max. transport height.
2. Now unfold the wing sections. **Important** When unfolding the wings, the locking claw must first be relieved by activating the folding function, until the wings rest at the stop on the center frame. When the unfolding function is activated, the locking claw then first will open, after which the side joints unfold.
3. Adjust the working depth.

From working to transport position:

1. Raise the machine to max. transport height..
2. The wing sections are folded together into transport position.  Be sure that the locking claws lock the wing sections.

Maintenance

- After 10 hours of operation, retighten the machine.
Check hydraulic hoses, fittings and cylinders for leaks and retighten. See table below.
- Furthermore, check on a regular basis that all bolts are tightened.
- Before the winter storage, wash and lubricate the machine. If you use high-pressure cleaner, do not spray directly on the ball bearings. After the washing, you may spray the machine with oil.

Maximum torque in Nm. w/lubricated thread			
Metric thread	Quality 8.8	Quality 10.9	Quality 12.9
M10x1,5	47	65	79
M12x1,75	81	114	136
M14x2,0	128	181	217
M16x2,0	197	277	333
M18x2,5	275	386	463
M20x2,5	385	541	649
M22x2,5	518	728	874
M24x3,0	665	935	1120
Wheel bolt M18x1,5 fine thread		385	
Wheel bolt M22x1,5 fine thread		550	

Lubrication

For lubrication, maintenance, and repair, lower the Sub-Tiller, put the brakes of the tractor on and stop the motor.

Typically, the lubrication points are located by the roller bearings, by the cylinders and the wing sections hinges.

The machine must be lubricated after 10 working hours as well as after cleaning in order to press out any water and dirt

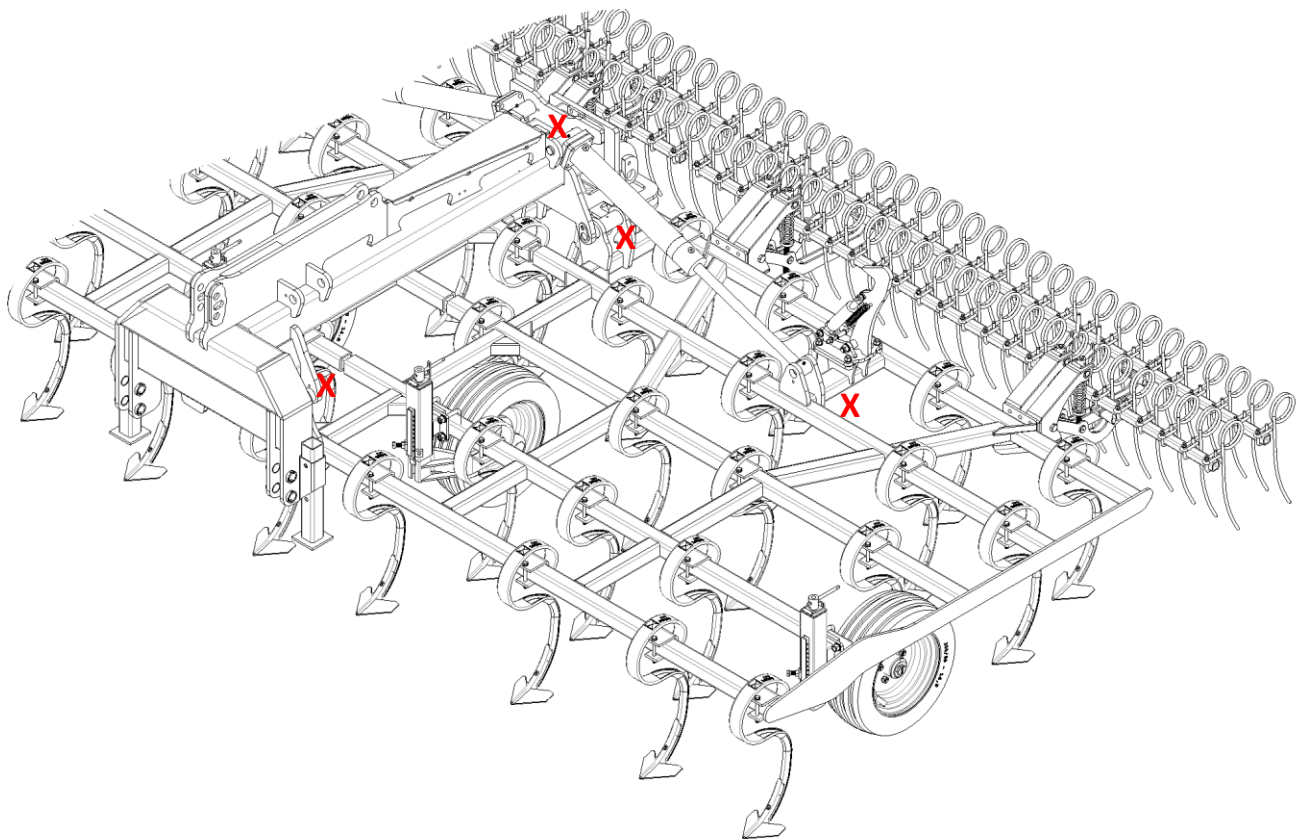
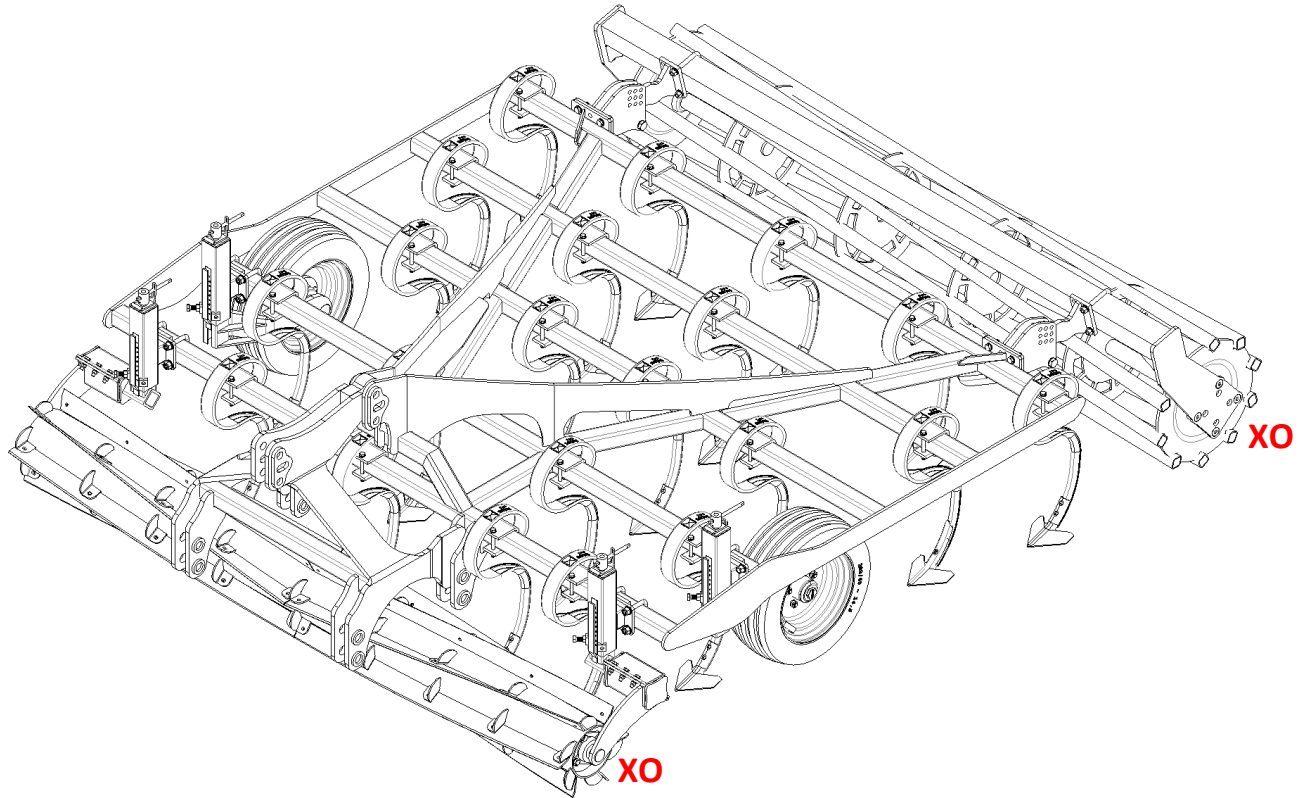
Note! XO

However, the double-sealed ball bearings in the roller should only be lubricated every 20 working hours and by 1-2 strokes so that the sealing rings

Important!

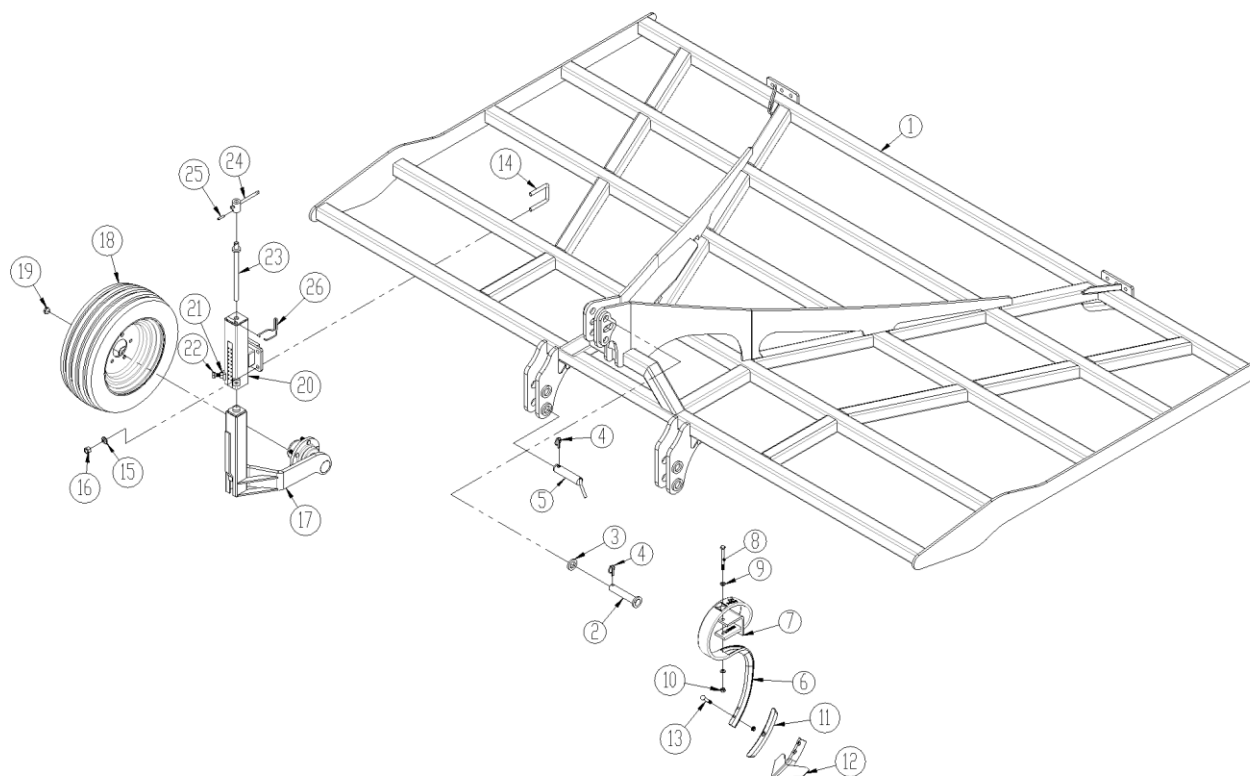
Oil, type Hydro Texaco HD32 has been filled in the hydraulic system.

Points of lubrication



Spare parts list

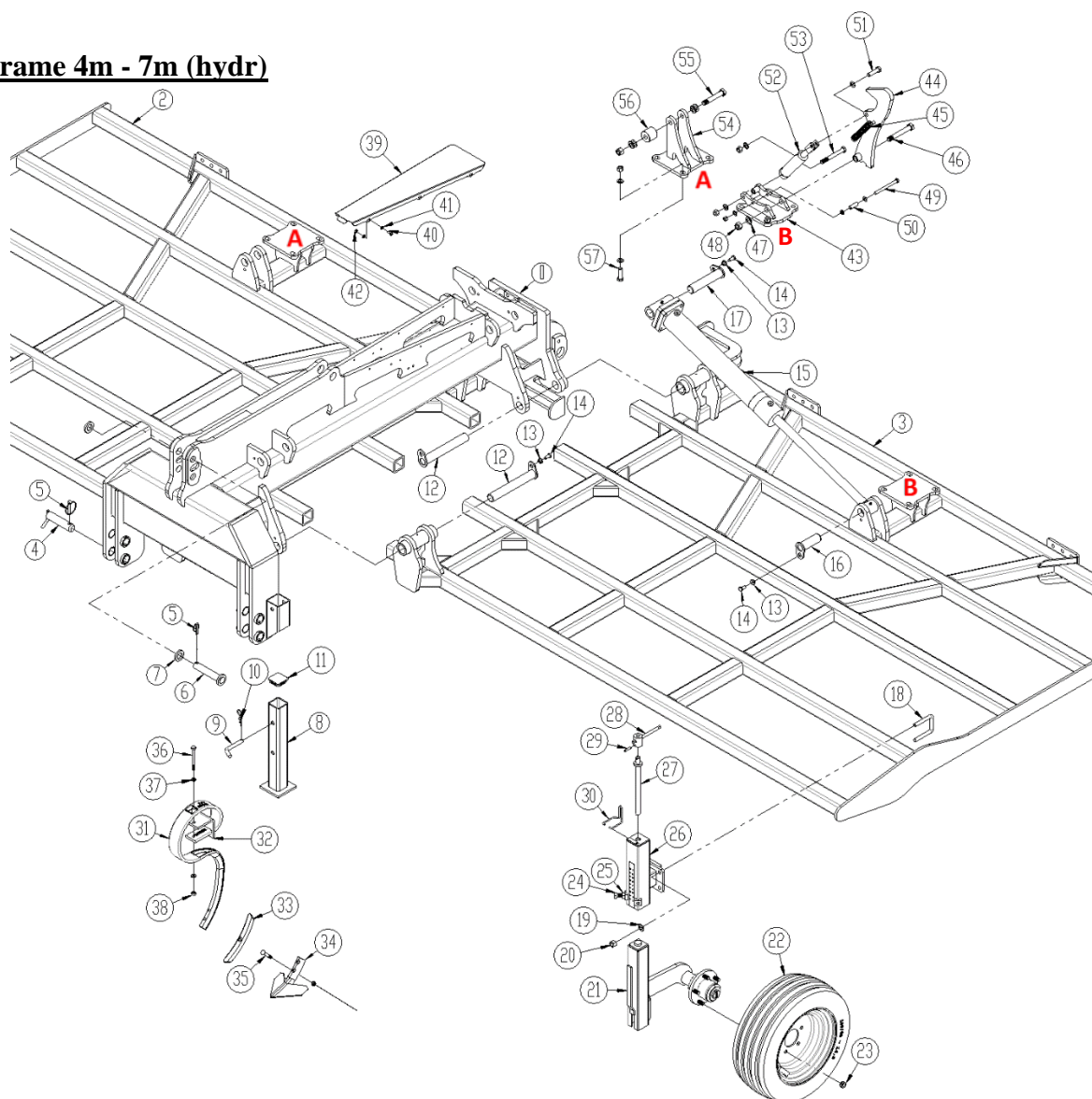
Frame 3m - 4m (rigid)



Pos.	Item no.	Designation	3,0m	3,5m	4,0m
1	1345105	Frame	1		
	1345006	Frame		1	
	1345008	Frame			1
2	1140361	Pin (top link)	1	1	1
3	1069950	Plate Ø33	1	1	1
4	690134008	Ring pin Ø11,5 m/ Ø60 ring	3	3	3
5	1140600	Pin (lift arm)	2	2	2
6	0422188	Tine 70x12mm	21	25	29
7	0422396	Tine support f/70x12mm	21	25	29
8	0235480	Bolt M12x120	21	25	29
9	0272270	Facet plate Ø12	42	50	58
10	0264070	Lock nut M12	21	25	29
11	0422034	Reversible point	21	25	29
12	0422230	Sweep 180mm	21	25	29
13	0386240	Cultivator bolt M10x60mm w/nut	21	25	29
14	0382150	U-bolt M16x70x70x70	4	4	4
15	0272290	Facet plate Ø16	8	8	8
16	0264090	Lock nut M16	8	8	8
17	1345074	Spindle tube w/hub (L)	1	1	1
	1345073	Spindle tube w/hub (R)	1	1	1

Pos.	Item no.	Designation	3,0m	3,5m	4,0m
17a	0395425	Hub (short shaft)			
17b	0395438	Steel sealing			
17c	0395230	Sealing ring Ø90/55			
17d	0479010	Bearing 30210			
17e	0478900	Bearing 30207			
17f	0395242	Castellated nut m27x1,5mm			
17g	0395436	Hub cap Ø72			
18	0395600	Wheel 200/60x14.5-10pr	2	2	2
19	0395291	Wheel nut M16x1,5 R19	10	10	10
20	1345101	Spindle tube	2	2	2
21	0261392	Nut M16	4	4	4
22	0235800	Bolt M16x45	4	4	4
23	1080540	Spindle	2	2	2
24	1035800	Crank handle	2	2	2
25	0371500	Retaining pin Ø6x32	2	2	2
26	0431980	Locking hoop	2	2	2

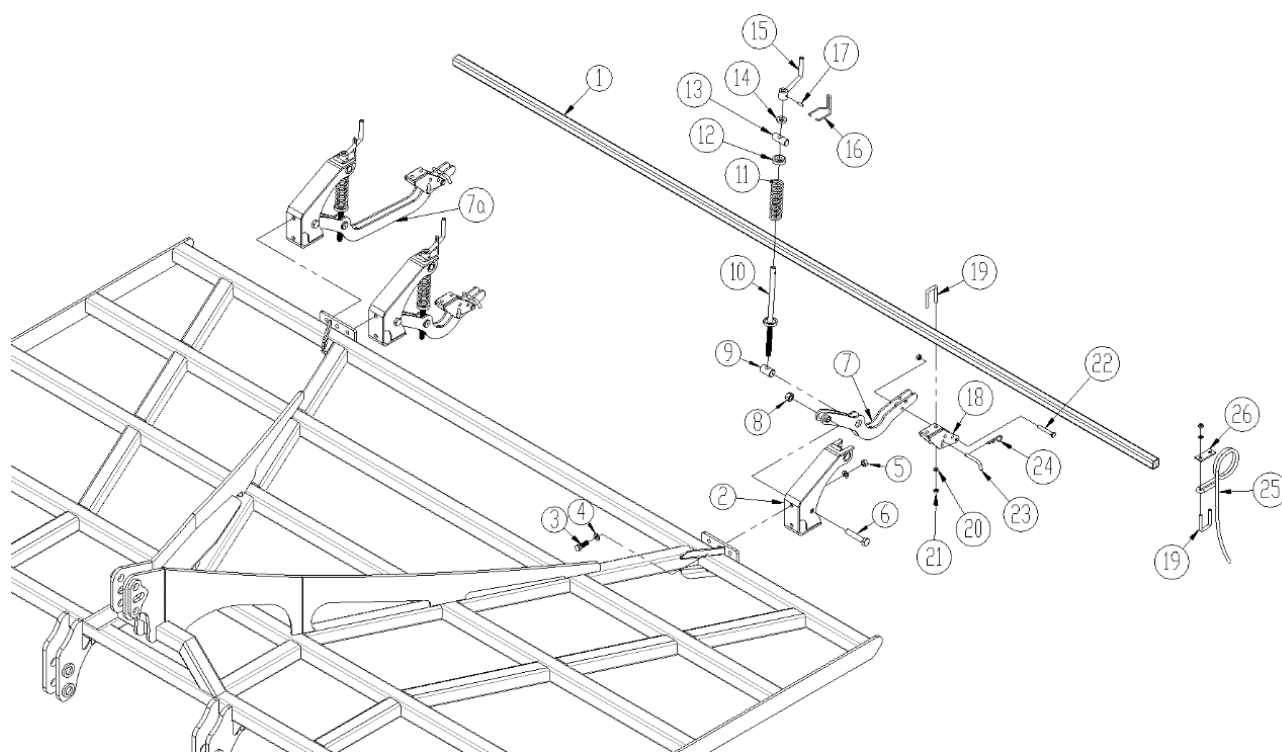
Frame 4m - 7m (hydr)



Pos.	Item no.	Designation	4,0m	5,0m	6,0m	7,0m
1	1295126	Center Frame	1	1	1	1
2	xx	Side section (Right)	1			
	1345096	Side section (Right)		1		
	1345066	Side section (Right)			1	
	xx	Side section (Right)				1
3	xx	Side section (Left)	1			
	1345093	Side section (Left)		1		
	1345044	Side section (Left)			1	
	xx	Side section (Left)				1
4	69537129B	Pin Ø37 L=129	2	2	2	2
5	690134008	Ring pin Ø11,5	3	3	3	3
6	1140361	Pin Ø32 L=149	1	1	1	1
7	1069950	Plate Ø33	2	2	2	2
8	1345086	Support leg	2	2	2	2
9	1030280	Pin Ø16	2	2	2	2
10	0377400	Hairpin split Ø4	2	2	2	2
11	690109202	Plug	2	2	2	2
12	69440280G	Pin Ø40 L=280mm	4	4	4	4

Pos.	Item no.	Designation	4,0m	5,0m	6,0m	7,0m
13	630532600	Lock bush	8	8	8	8
14	0235330	Bolt M12x25mm	8	8	8	8
15	690200252	Cylinder 90/40 x 600	2	2	2	2
16	69440115G	Pin Ø40 L=115mm	2	2	2	2
17	69440195G	Pin Ø40 L=195mm	2	2	2	2
18	0382150	U-bolt M16x70x70x70	8	8	8	8
19	0272290	Facet plate Ø16	36	36	36	36
20	0264090	Lock nut M16	26	26	26	26
21	1345074	Spindle tube w/hub (left)	2	2	2	2
	1345073	Spindle tube w/hub (right)	2	2	2	2
22	0395600	Wheel 200/60x14.5-10 PLY	4	4	4	4
23	0395291	Wheel nut	20	20	20	20
24	0235800	Bolt M16x45	8	8	8	8
25	0261100	Nut M16	8	8	8	8
26	1345101	Spindle tube	4	4	4	4
27	1080540	Spindle	4	4	4	4
28	1035800	Crank handle	4	4	4	4
29	0371500	Retaining pin Ø6x32	4	4	4	4
30	0431980	Locking hoop	4	4	4	4
31	0422188	Tine 70x12mm	29	36	43	50
32	0422396	Tine support f/70x12mm	29	36	43	50
33	0422034	Reversible point	29	36	43	50
34	0422230	Sweep 180mm	29	36	43	50
35	0386240	Cultivator bolt M10x60mm w/nut	29	36	43	50
36	0235480	Bolt M12x120	29	36	43	50
37	0272270	Facet plate Ø12	58	74	88	102
38	0264070	Lock nut M12	30	37	44	51
39	1300120	Screen	1	1	1	1
40	0234750	Bolt M8x20	6	6	6	6
41	0272250	Facet plate Ø8	12	12	12	12
42	0264050	Lock nut M8	6	6	6	6
43	630916606	Consol f/ locking device	1	1	1	1
44	630916605	Locking device	1	1	1	1
45	0431650	OuterTension spring 3,5x26x160x35v	2	2	2	2
46	0236230	Bolt M20x140	1	1	1	1
47	0272310	Facet plate Ø20	4	4	4	4
48	0264110	Lock nut M20	2	2	2	2
49	0235500	Bolt M12x140	1	1	1	1
50	630916607	Bushing Ø16 x 45mm	1	1	1	1
51	0235840	Bolt M16x60	1	1	1	1
52	690200170	Cylinder 40/25x80mm	1	1	1	1
	690200175	Gasket set				
53	0235940	Bolt M16x140	1	1	1	1
54	1165101	Consol f/ locking device	1	1	1	1
55	0236210	Bolt M20x120mm	1	1	1	1
56	630670593	Bushing Ø56 L=51	1	1	1	1
57	0235830	Bolt M16x55mm	8	8	8	8

Long finger harrow single and double 3m - 7m



Single row of tin

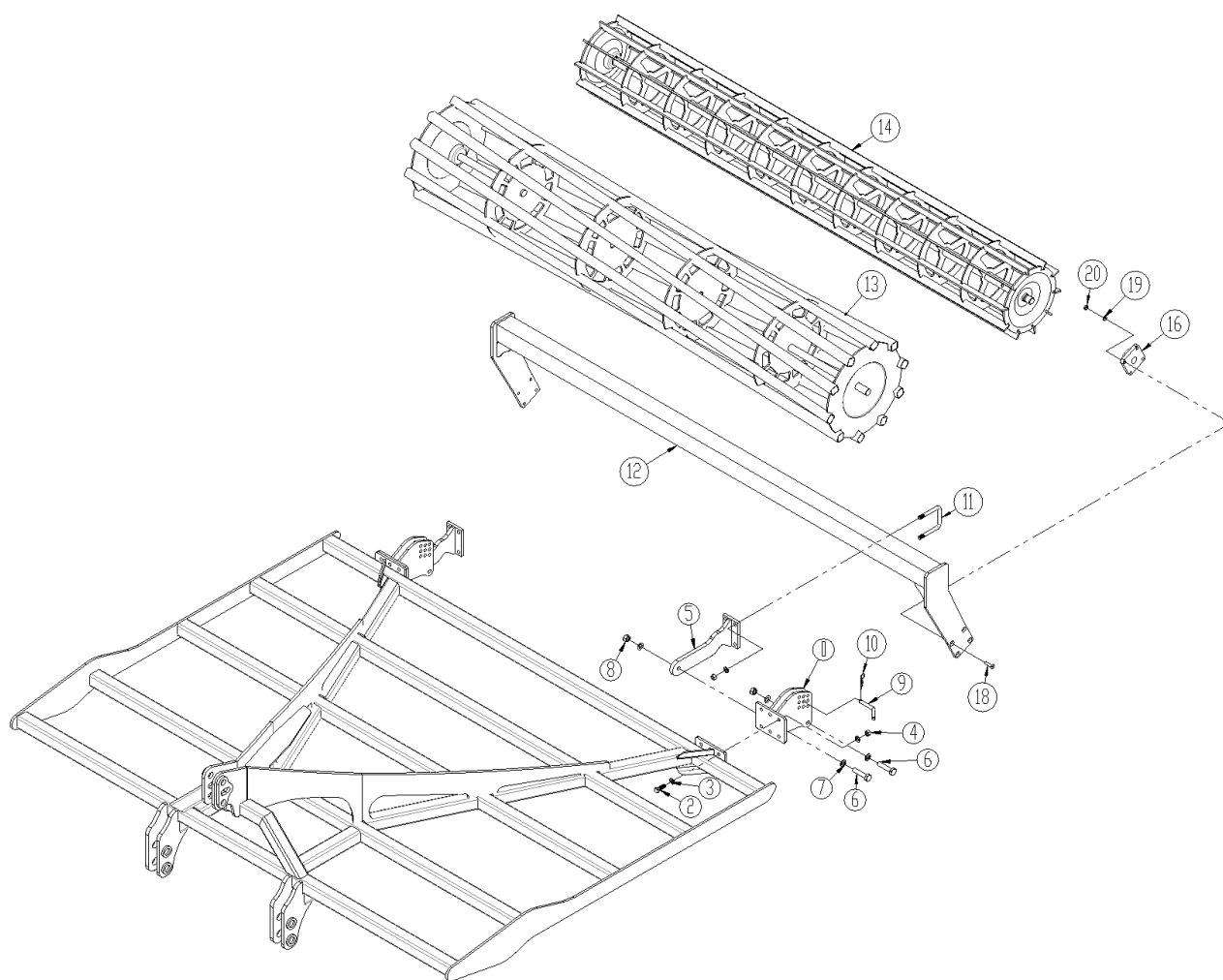
Pos.	Item no.	Designation	3m	3,5m	4m	4m hydr	5m hydr	6m hydr	7m hydr
1	1140910	Bar	1						
	1140899	Bar		1					
	1160769	Bar			1				
	1141123	Bar				2			
	1141008	Bar					2		
	1140910	Bar						2	
	1140899	Bar							2
2	1160739	Consol	2	2	2	4	4	4	4
3	0235810	Bolt M16x50mm	4	4	4	8	8	8	8
4	0272290	Facet plate Ø16	8	8	8	16	16	16	16
5	0264090	Lock nut M16	4	4	4	8	8	8	8
6	0236190	Bolt M20x100	2	2	2	4	4	4	4
7	1160741	Arm (short)	2	2	2	4	4	4	4
8	0264110	Lock nut M20	2	2	2	4	4	4	4
9	1012300	Spindle nut	2	2	2	4	4	4	4
10	1170467	Spindle	2	2	2	4	4	4	4
11	0431250	Pressure spring	2	2	2	4	4	4	4
12	1170460	Plate	2	2	2	4	4	4	4
13	1011470	Bearing f/spindle	2	2	2	4	4	4	4
14	1011410	Stop ring	2	2	2	4	4	4	4
15	1036260	Crank handle	2	2	2	4	4	4	4
16	0431980	Locking hoop	2	2	2	4	4	4	4
17	0371660	Retaining pin Ø8x32mm	2	2	2	4	4	4	4
18	1170469	Adjusting unit	2	2	2	4	4	4	4

Pos.	Item no.	Designation	3m	3,5m	4m	4m hydr	5m hydr	6m hydr	7m hydr
19	0382120	U-bolt M12x40x40x40	26	31	35	36	44	52	62
20	0272270	Facet plate Ø12	54	64	72	76	92	108	128
21	0264070	Lock nut M12	54	64	72	76	92	108	128
22	0235440	Bolt M12x80	2	2	2	4	4	4	4
23	1170478	Pin Ø12	2	2	2	4	4	4	4
24	0377400	R-clip Ø4	2	2	2	4	4	4	4
25	0426125	Long finger tin	24	29	33	32	40	48	58
26	1012520	Clamping plate	24	29	33	32	40	48	58

Double row of tin

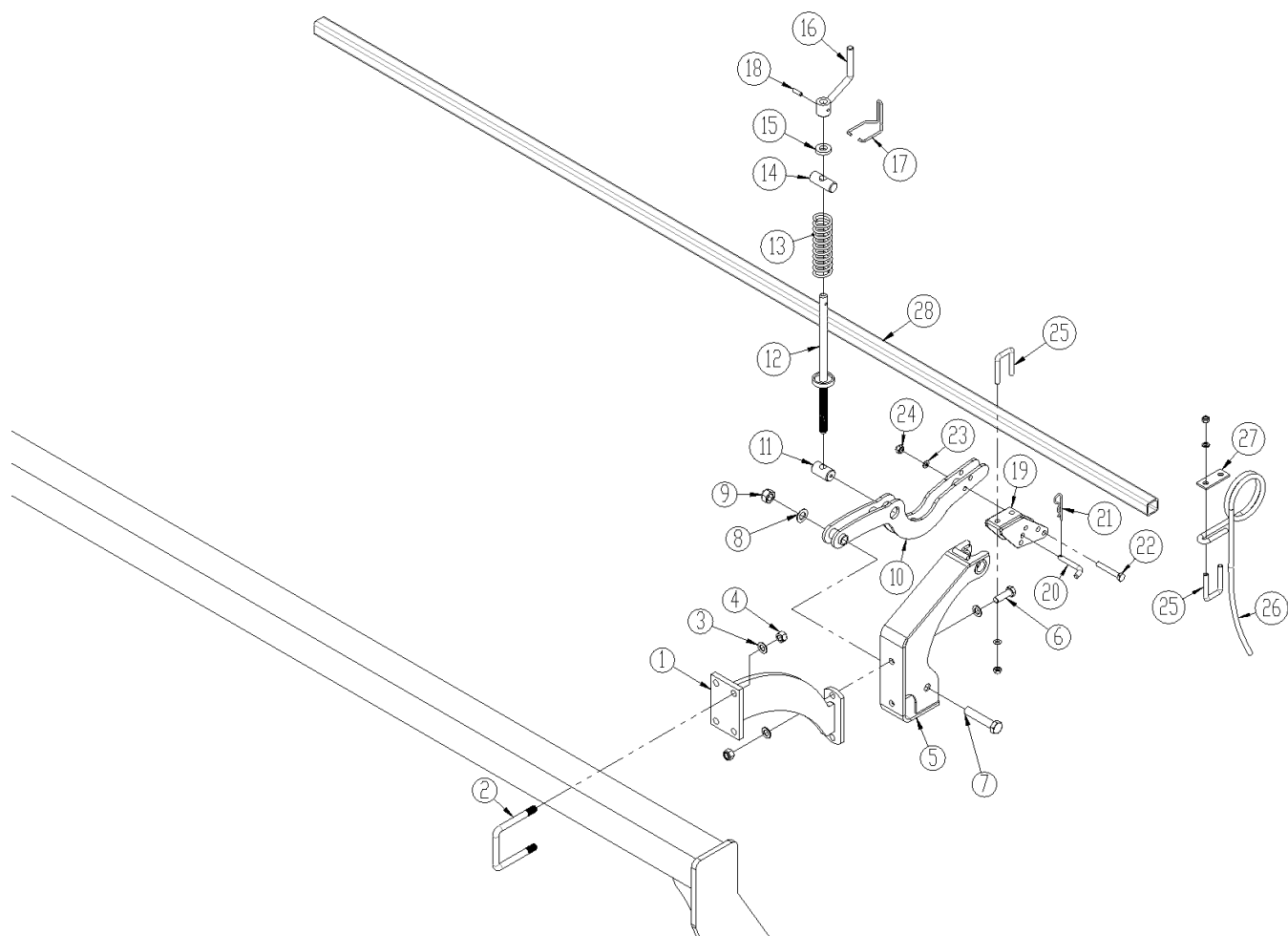
Pos.	Item no.	Designation	3m	3,5m	4m	4m hydr	5m hydr	6m hydr	7m hydr
1	1140910	Bar	2						
	1140899	Bar		2					
	1160769	Bar			2				
	1141123	Bar				4			
	1141008	Bar					4		
	1140910	Bar						4	
	1140899	Bar							4
2	1160739	Consol	4	4	4	8	8	8	8
3	0235810	Bolt M16x50mm	8	8	8	16	16	16	16
4	0272290	Facet plate Ø16	16	16	16	32	32	32	32
5	0264090	Lock nut M16	8	8	8	16	16	16	16
6	0236190	Bolt M20x100	4	4	4	8	8	8	8
7	1160741	Arm (short)	2	2	2	4	4	4	4
	1160908	Arm (long)	2	2	2	4	4	4	4
8	0264110	Lock nut M20	4	4	4	8	8	8	8
9	1012300	Spindle nut	4	4	4	8	8	8	8
10	1170467	Spindle	4	4	4	8	8	8	8
11	0431250	Pressure spring	4	4	4	8	8	8	8
12	1170460	Plate	4	4	4	8	8	8	8
13	1011470	Bearing f/spindle	4	4	4	8	8	8	8
14	1011410	Stop ring	4	4	4	8	8	8	8
15	1036260	Crank handle	4	4	4	8	8	8	8
16	0431980	Locking hoop	4	4	4	8	8	8	8
17	0371660	Retaining pin Ø8x32mm	4	4	4	8	8	8	8
18	1170469	Adjusting unit	4	4	4	8	8	8	8
19	0382120	U-bolt M12x40x40x40	28	33	37	40	48	56	66
20	0272270	Facet plate Ø12	58	68	76	84	100	116	136
21	0264070	Lock nut M12	58	68	76	84	100	116	136
22	0235440	Bolt M12x80	4	4	4	8	8	8	8
23	1170478	Pin Ø12	8	8	8	16	16	16	16
24	0377400	R-clip Ø4	8	8	8	16	16	16	16
25	0426125	Long finger tin	24	29	33	32	40	48	58
26	1012520	Clamping plate	24	29	33	32	40	48	58

Roller



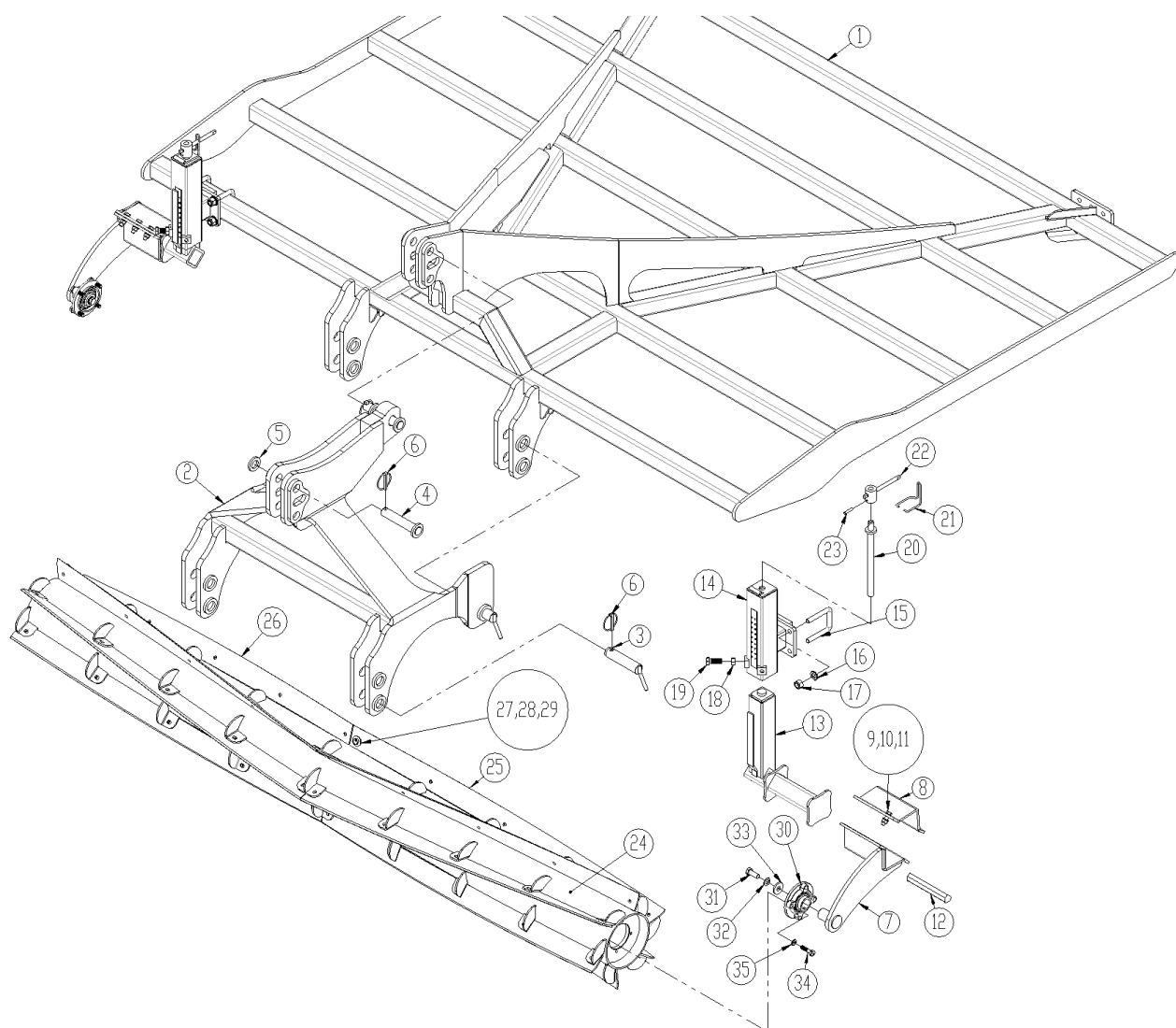
Pos.	Item no.	Designation	3m	3,5m	4m	4m hydr	5m hydr	6m hydr	7m hydr
1	1345142	Consol	2	2	2	4	4	4	4
2	0235810	Bolt M16x50mm	12	12	12	24	24	24	24
3	0272290	Facet plate Ø16	24	24	24	48	48	48	48
4	0264090	Lock nut M16	12	12	12	24	24	24	24
5	1345144	Arm f/Roller bar	2	2	2	4	4	4	4
6	0236180	Bolt M20x90mm	4	4	4	8	8	8	8
7	0272310	Facet plate Ø20	16	16	16	32	32	32	32
8	0264110	Lock nut M20	12	12	12	24	24	24	24
9	69516080A	Pin Ø16 L=80,5	2	2	2	4	4	4	4
10	0377400	R-clip Ø4	2	2	2	4	4	4	4
11	0382160	U-bolt M16x100x100x100 mm	4	4	4	8	8	8	8
12	1345152	Roller bar	1						
	1345157	Roller bar		1					
	1345159	Roller bar			1				
	1345163	Roller bar				2			
	1345167	Roller bar					2		
	1345152	Roller bar						2	
	1345157	Roller bar							2

Pos.	Item no.	Designation	3m	3,5m	4m	4m hydr	5m hydr	6m hydr	7m hydr
13	7452035	Square tube roller Ø550 (ø35 aksel)	1						
	7452045	Square tube roller Ø550 (ø35 aksel)		1					
	7452047	Square tube roller Ø550 (ø35 aksel)			1				
	7452042	Square tube roller Ø550 (ø35 aksel)				2			
	7452043	Square tube roller Ø550 (ø35 aksel)					2		
	7452035	Square tube roller Ø550 (ø35 aksel)						2	
	7452045	Square tube roller Ø550 (ø35 aksel)							2
14	7454008	Flat bar roller (ø35 axle)	1						
	7454011	Flat bar roller (ø35 axle)		1					
	1170310	Flat bar roller (ø35 axle)			1				
	7454004	Flat bar roller (ø35 axle)				2			
	7454005	Flat bar roller (ø35 axle)					2		
	7454008	Flat bar roller (ø35 axle)						2	
	7454011	Flat bar roller (ø35 axle)							2
16	0478700	Bearing UCF 207 (Ø35 axle)	2	2	2	4	4	4	4
18	0228100	Bolt M12x50	8	8	8	16	16	16	16
19	0272270	Facet plate ø12	8	8	8	16	16	16	16
20	0264070	Lock nut M12	8	8	8	16	16	16	16

Long finger harrow behind roller 3m - 7m


Pos.	Item no.	Designation	3m	3,5m	4m	4m hydr	5m hydr	6m hydr	7m hydr
1	1140945	Bracket f/consol	2	2	2	4	4	4	4
2	0382160	U-Bolt M16x100x100x100	4	4	4	8	8	8	8
3	0272290	Facet plate Ø16	16	16	16	32	32	32	32
4	0264090	Lock nut M16	12	12	12	24	24	24	24
5	1141271	Consol	2	2	2	4	4	4	4
6	0235810	Bolt M16x50	4	4	4	8	8	8	8
7	0236190	Bolt M20x100	2	2	2	4	4	4	4
8	0272310	Facet plate Ø20	2	2	2	4	4	4	4
9	0264110	Lock nut M20	2	2	2	4	4	4	4
10	1170468	Arm	2	2	2	4	4	4	4
11	1012300	Spindle nut	2	2	2	4	4	4	4
12	1170467	Spindle	2	2	2	4	4	4	4
13	0431250	Pressure spring	2	2	2	4	4	4	4
14	1011470	Bearing f/spindle	2	2	2	4	4	4	4
15	1011410	Stop ring	2	2	2	4	4	4	4
16	1036260	Crank handle	2	2	2	4	4	4	4
17	0431980	Locking hoop	2	2	2	4	4	4	4
18	0371660	Retaining pin Ø8x32mm	2	2	2	4	4	4	4
19	1170469	Adjusting unit	2	2	2	4	4	4	4

Pos.	Item no.	Designation	3m	3,5m	4m	4m hydr	5m hydr	6m hydr	7m hydr
20	1170478	Pin Ø12	2	2	2	4	4	4	4
21	0377400	R-clip Ø4	2	2	2	4	4	4	4
22	0235440	Bolt M12x80	2	2	2	4	4	4	4
23	0272270	Facet plate Ø12	54	64	72	76	92	108	128
24	0264070	Lock nut M12	54	64	72	76	92	108	128
25	0382120	U-bolt M12x40x40x40	26	31	35	36	44	52	62
26	0426125	Long finger tin	24	29	33	32	40	48	58
27	1012520	Clamping plate	24	29	33	32	40	48	58
28	1140910	Bar	1						
	1140899	Bar		1					
	1160769	Bar			1				
	1141123	Bar				2			
	1141008	Bar					2		
	1140910	Bar						2	
	1140899	Bar							2

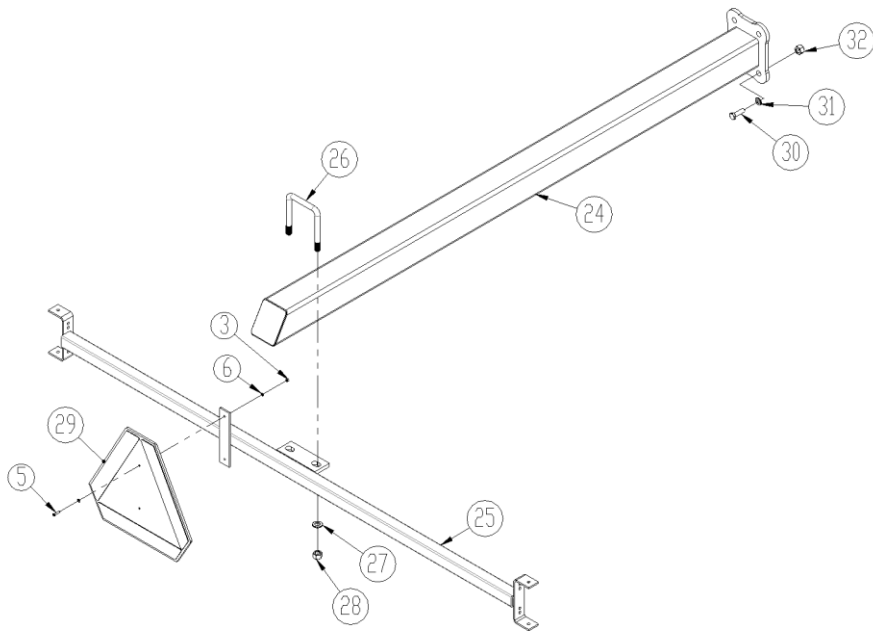
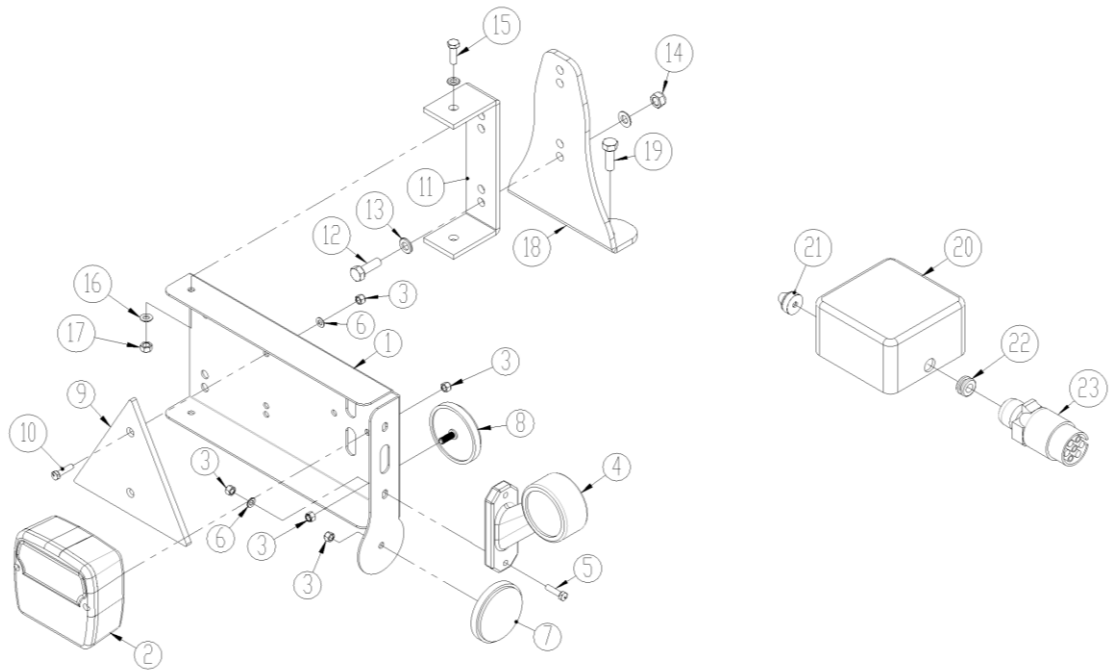
Top-Cutter (rigid)


Pos.	Item no.	Designation	3,0m	3,5m	4,0m
1		See pos. 1 page 15			
2	1345134	Tree-point hitch	1	1	1
3	1140600	Pin (lift arm)	2	2	2
4	1140361	Pin (top link)	1	1	1
5	1069950	Washer Ø33	2	2	2
6	690134008	Ring pin t Ø11,5 mm/ Ø60 ring	3	3	3
7	1330008	Carrier arm (left)	1	1	1
	1330011	Carrier arm (right)	1	1	1
8	30949045	Bracket	2	2	2
9	690103091	Bolt M12x45	12	12	12
10	0272270	Facet plate Ø12	24	24	24
11	0264070	Lock nut M12	12	12	12
12	690210710	Rubber cord Ø35 L=190mm	8	8	8
13	1345129	Spindle tube (left)	1	1	1
	1345126	Spindle tube (right)	1	1	1
14	1345101	Spindle tube	2	2	2
15	0382150	U-bolt M16x70x70x70	4	4	4

Pos.	Item no.	Designation	3,0m	3,5m	4,0m
16	0272290	Facet plate Ø16	8	8	8
17	0264190	Lock nut M16	8	8	8
18	0261100	Nut M16	4	4	4
19	0235800	Bolt M16x45mm	4	4	4
20	1080540	Spindle	2	2	2
21	0431980	Locking hoop	2	2	2
22	1035800	Crank handle	2	2	2
23	0371500	Retaining pin Ø6x32mm	2	2	2
24	7455000	Top-Cutter roller (complete)	1		
	7455110	Top-Cutter roller (complete)		1	
	7455020	Top-Cutter roller (complete)			1
25	7455004	Knife (left) L=1475	6		
	7455109	Knife (left) L=1698		6	
	7455162	Knife (left) L=1970			6
26	7455003	Knife (right) L=1475	6		
	7455108	Knife (right) L=1698		6	
	7455161	Knife (right) L=1970			6
27	0235369	Bolt M12x40			
28	0272620	Washer Ø13/Ø37			
29	690113019	Clamp lock nut M12			
30	7355060	Bearing UCFC 208 R6 (complet)	2	2	2
	7355061	Bearing (ball bearing) UC 208 R6			
31	0235790	Bolt M16x40	2	2	2
32	0272290	Facet plate Ø16 DIN125B	2	2	2
33	690117016	Washer Ø17x45x6	2	2	2
34	0235380	Bolt M12x50 8.8 fzb	8	8	8
35	0272270	Facet plate 12mm fzb DIN125B	8	8	8

Top-Cutter (hydraulic)

LED-light



Pos.	Item no.	Designation	No.
1	7357505	Light bracket, left	1
	7357508	Light bracket, right	1
2	7357504	Rear light	2
3	0264030	Lock nut M5	
4	7357507	Marking lights, left	1
	7357509	Marking lights, right	1
5	0233860	Bolt M5x20	
6	0272230	Facet plate Ø5	
7	0656240	Reflex, yellow	2
8	0656250	Reflex, white	2
9	0521030	Reflex, red	2
10	0233860	Bolt M5x20	
11	7357516	Bracket	2
12	0234760	Bolt M8x25	
13	0272250	Facet plate Ø8	
14	0264050	Lock nut M8	
15	0234330	Bolt M6x20	
16	0272240	Facet plate Ø6	
17	0264040	Lock nut M6	
18	30910110	Consol	2
19	0230825	Taptite bolt M8x25	
20	0520492	Connecting box 105x105x60	1
21	7357545	Rutaseal nippel M20 8-12mm	2
22	7357546	Rubber bushing	1
23	0527140	Plug 7 poles DIN 72 577 – ISO 1724	1
	690160080	Cable 5x1mm ²	
24	1160370	Light beam holder	1
25	630835020	Bar for light	1
26	0382160	U-bolt M16x100x100x100mm	1
27	0272290	Facet plate 16mm	2
28	0264090	Lock nut M16	2
29	0521010	Warning Triangle	1
30	0235360	Bolt M12x40 mm	4
31	0272270	Facet plate Ø12	
32	0264090	Lock nut M12	

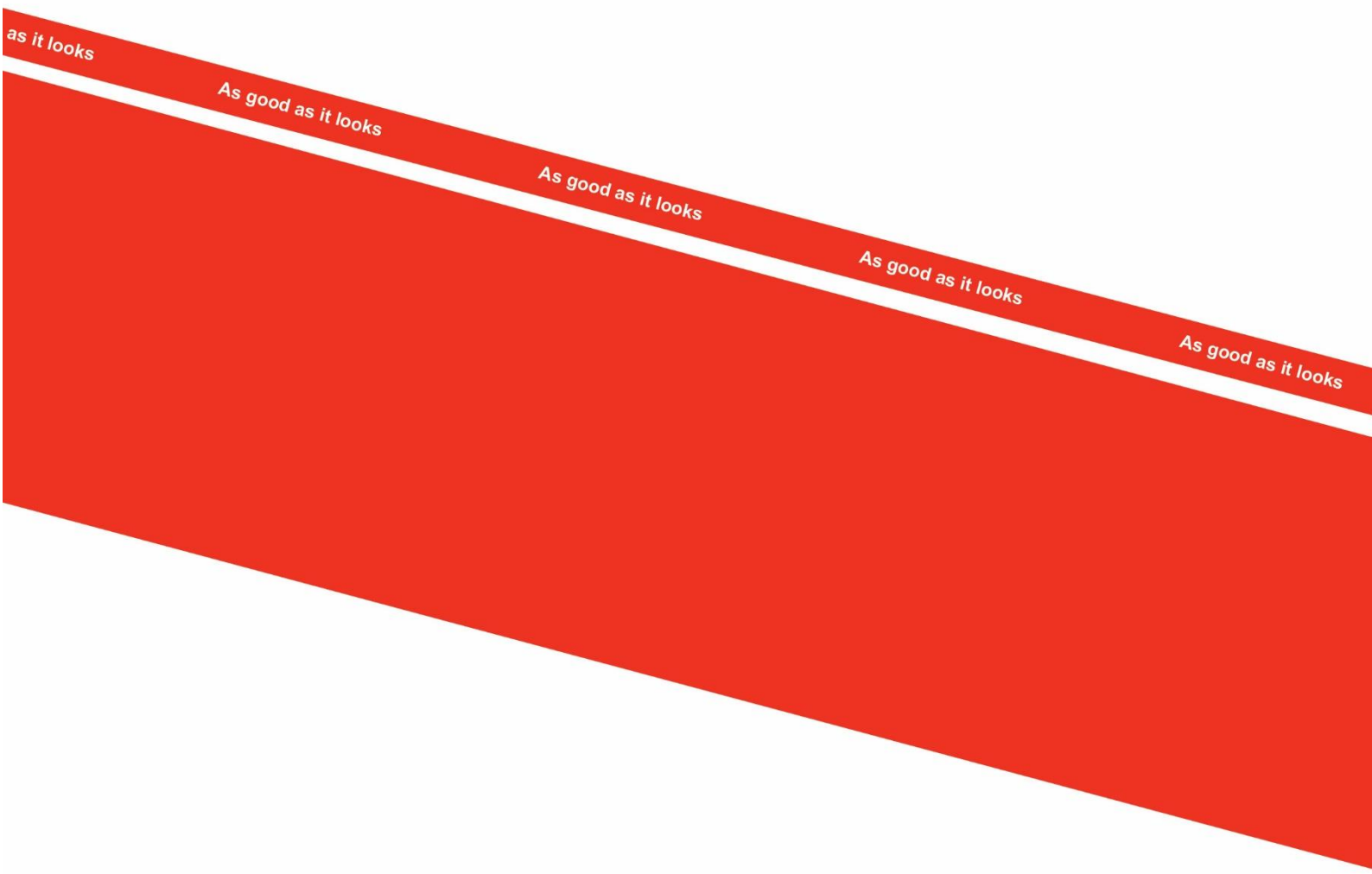
Hydraulics

Wing (hydraulic)

Pos.	Item no.	Designation	4,0m	5,0m	6,0m

Recommends measuring hydraulic hose before re-ordering.

Note



2011
Denmark