

# Extra Equipment

## Spring-Board afterharrow

Spring-Board after-harrow may be fitted between the harrow section and roller (not possible with double roller). With vibrating 45x10 mm tines and 8x150 mm points, the Spring-Board after-harrow effectively crushes any remaining clods.



## Longfinger afterharrow

A long finger after-harrow behind the roller ensures a more textured surface after the square tube and flat bar rollers. This counteracts sand drift on light soils.



## Wheel track eradicator

On trailed models, a set of 2x2 tines with 250 mm goosefoot points mounted in front of the Spring-Board is available, as shown in the photo. All Terra-Dan MKII models may be fitted with 65x13 mm tines on the front bar, which are 60 mm longer than the other tines. These tines act as wheel track eradicators.



## LED lights

All machines can be equipped with LED lights.



## Hydr. adjustment of Spring-Board

The Spring-Board is available with hydraulic adjustment of the working angle in addition to the standard mechanical height adjustment.

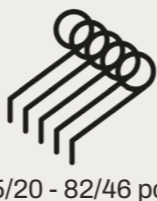
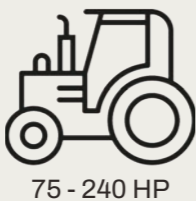
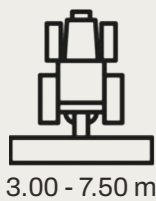


## Larger wheels

The larger 500/50x17 - 14 PLY wheels ensure a wider contact area and an improved stability, especially on larger models.



# Technical Specifications



Work Width, m	Type	Transport Width, m	No. of Tines	Pow. Req., HP	Lifting Req., kg	Weight, kg
3.00	Rigid - Three-point mounted	3.00	35/20	75 - 110	3,150 - 3,470	1,770 - 1,950
3.50	Rigid - Three-point mounted	3.50	41/23	90 - 130	3,675 - 4,050	2,065 - 2,275
4.00	Rigid - Three-point mounted	4.00	47/26	100 - 160	4,200 - 4,630	2,360 - 2,600
4.00	Foldable - Three-point mounted	2.45	47/26	100 - 160	4,950 - 5,600	2,766 - 2,946
5.00	Foldable - Three-point mounted	2.45	59/33	125 - 185	5,350 - 6,000	2,979 - 3,159
6.00	Foldable - Three-point mounted	2.45	70/40	150 - 210	5,750 - 6,400	3,196 - 3,376
7.50	Foldable - Three-point mounted	2.45	82/46	175 - 240	6,350 - 7,050	3,530 - 3,710
4.00	Foldable - Trailed	2.45	47/26	100 - 160	-	4,030 - 4,600
5.00	Foldable - Trailed	2.45	59/33	125 - 185	-	4,280 - 4,870
6.00	Foldable - Trailed	2.45	70/40	150 - 210	-	4,520 - 5,140
7.50	Foldable - Trailed	2.45	82/46	175 - 240	-	4,910 - 5,560

# Terra-Dan MKII

Efficient harrow for perfect seedbed preparation in full working width



Tel.: +45 97 72 42 88  
E-mail: info@he-va.com

Web: www.he-va.com

N.A. Christensensvej 34  
DK-7900 Nykøbing Mors

Your HE-VA dealer

HE-VA reserves the right to make design and construction changes without notice



# Perfect consolidation, even across work width and depth control via roller

HE-VA Terra-Dan MKII is the ideal seedbed harrow for farmers who want a precise depth control together with a completely uniform consolidation. HE-VA Terra-Dan MKII is available in both three-point-mounted and trailed models, and all are equipped with the Spring-Board levelling bar in front, followed by 4 rows of harrow tines, a long finger afterharrow (double roller models excepted) and a packer roller behind.



The HE-VA Terra-Dan MKII is unique thanks to the 2 completely independent centre-pivoting wing sections. The harrow is extremely flexible on hilly surfaces, not to mention consolidates the soil evenly across the working width by transferring the weight of the frame, wheel frame and drawbar (o) onto the centre of each section (see photo).



## Tine Types



45x12 mm tines with 8.5 cm row spacing for a fine and uniform seedbed preparation.



65x12 mm tines with 15 cm row spacing for a lighter harrowing to maintain the surface structure. This tine allows the harrow to be used for light stubble preparation, a full cutting of the surface is ensured with the 180x6 mm goosefoot point.



# Standard Equipment

## Depth Control

On the three-point-mounted Terra-Dan MKII models, the working depth is adjusted via the tractor's threepoint linkage and a series of holes placed at the roller arms. On the trailed Terra-Dan MKII models, the working depth is adjusted via clips on the drawbar cylinder and the holes placed at the roller arms.



## Hydraulic Folding

All our Terra-Dan MKII models have a transport width of only 2.45 m.

The automatic locking devices secure the wing sections during transport and maintenance.

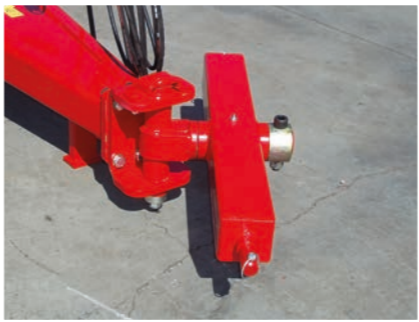


## Edge Equipment

To ensure a totally plane soil surface between each pass in the field, all Terra-Dan MKII models have edge equipment as a standard feature.

## Pivoting Drawbar

Standard on all trailed models.



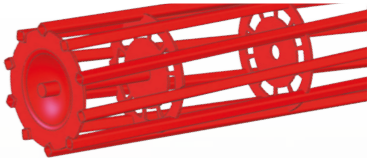
## Spring-Board

The Spring-Board on the Terra-Dan MKII leaves a perfectly level and clod-free surface. It has strong 10x80 mm spring tines mounted with 8x150 mm points. The Spring-Board is adjusted manually in height, and extra equipment allows hydraulic adjustment of the working angle.



## Roller Types

### Square Tube Roller



Ø550 mm square tube roller is made of strong sectional tubes, ensuring an excellent stone protection. Choose the square tube roller for in-depth consolidation and loose surface soil.

### Double Roller



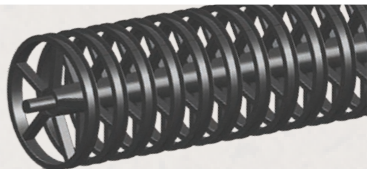
Ø550/Ø410 mm double roller consisting of a Ø550 mm square tube roller followed by a Ø410 mm flat bar roller. The square tube roller consolidates the surface, and the flat bar roller then acts as a powerful rotor crumbler, making the double roller ideal for heavier soil types, as the surface will have a very fine structure.

### V-Profile Roller



Ø600 mm packer roller cuts through the surface, leaving an ideal consolidation and - more importantly - a weatherproof surface. The Ø600 mm V-profile is a serrated ring of pressed steel with a shoulder profile that easily breaks clods on heavy soils and consolidates lighter soils efficiently. Effective scrapers mounted between the rings make an even consolidation possible in all soil conditions.

### U-Profile Roller



The U-profile roller is designed so that the roller fills with soil when at work. This ensures a good soil-to-soil consolidation and gives the soil surface a natural structure.

### Twin U-Profile



A Twin roller is a great maintenance free solution as the rollers will clean one another during operation. The Twin U-Profile ensures a good soil-to-soil consolidation.