

# Technical Specifications



6.00 - 10.00 m









3.00 - 4.00 m



120 - 225 hp



3,150 - 4,200 kg

		Cambridge				Star ring		Cam	Crosskill	2D Corrugated			Plain roller	
														
Working Width, m	RING SIZE	510 mm	510 mm	560 mm	620 mm	450/500 mm	550/600 mm	550 mm	485/530 mm	550/600 mm	500 mm	550 mm	600 mm	610 mm
	SPOKES	3	8	9	10	-	-	-	-	-	8	9	10	-
4.50 TRANSPORT W. 2.22	WEIGHT, KG	2,160	2,260	2,540	2,810	2,160	2,570	1,510	1,980	2,460	1,990	2,230	2,380	-
	RINGS, PCS.	87	87	87	87	88	88	30	45	45	57	57	57	-
	AXLE, MM	60	60	60	60	60	60	60	60	60	60	60	60	-
5.40 TRANSPORT W. 2.22	WEIGHT, KG	2,560	2,690	3,100	3,240	2,610	3,140	1,880	2,450	3,010	2,430	2,730	2,970	-
	RINGS, PCS.	105	105	105	105	102	102	36	54	54	69	69	69	-
	AXLE, MM	60	60	60	60	60	60	60	60	60	60	60	60	-
WHEELS: 10.0 / 75 X 15.3 - 10 PLY														
6.30 TRANSPORT W. 2.45	WEIGHT, KG	2,950	3,140	3,710	4,190	3,010	3,870	2,110	2,780	3,490	2,840	3,250	3,390	2,240 w/o water 3,860 with water
	RINGS, PCS.	123	123	123	123	120	120	42	63	63	78	78	78	-
	AXLE, MM	60	60	60	60	60	60	60	60	60	60	60	60	-
7.30 TRANSPORT W. 2.45	WEIGHT, KG	3,630	3,840	4,430	4,780	3,760	4,680	2,710	3,460	4,380	3,520	3,860	4,010	-
	RINGS, PCS.	143	143	143	143	140	140	48	73	73	90	90	90	-
	AXLE, MM	60	60	60	60	60	60	60	60	60	60	60	60	-
7.60 TRANSPORT W. 2.45	WEIGHT, KG	3,784	3,994	4,608	4,984	3,900	4,862	2,778	3,530	4,472	3,630	3,982	4,148	-
	RINGS, PCS.	151	151	151	151	148	148	45	79	79	99	99	99	-
	AXLE, MM	60	60	60	60	60	60	60	60	60	60	60	60	-
8.20 TRANSPORT W. 2.45	WEIGHT, KG	4,050	4,190	4,700	5,200	4,180	5,120	3,010	3,880	4,900	3,840	4,100	4,350	-
	RINGS, PCS.	157	157	157	157	152	152	55	81	81	102	102	102	-
	AXLE, MM	60	60	60	60	60	60	60	60	60	60	60	60	-
WHEELS: 11.5 / 80 X 15.3 - 14 PLY														
9.50 TRANSPORT W. 2.45	WEIGHT, KG	4,830	5,180	5,770	6,350	5,230	6,200	3,870	4,820	6,020	4,740	5,030	5,320	3,400 w/o water 5,840 with water
	RINGS, PCS.	180	180	180	180	172	172	63	95	95	118	118	118	-
	AXLE, MM	60	60	60	60	60	60	60	60	60	60	60	60	-
10.20 TRANSPORT W. 2.45	WEIGHT, KG	5,310	5,690	6,220	6,850	5,590	6,640	-	5,120	6,390	5,020	5,310	5,650	-
	RINGS, PCS.	196	196	196	196	186	186	-	101	101	126	126	126	-
	AXLE, MM	60	60	60	60	60	60	-	60	60	60	60	60	-
WHEELS: 400 / 60 X 15.5 - 16 PLY														

Working Width, m	Number of Tines	Spring-Board, 1-row			Spring-Board, 2-row		
		Power requirement, hp	Weight, kg w/ locking system	Weight, kg w/o locking system	Power requirement, hp	Weight, kg w/ locking system	Weight, kg w/o locking system
4.50	18	+20	475	420	-	-	-
5.40	22	+25	549	485	-	-	-
6.30	24	+30	624	550	-	-	-
6.30 HD	24	+30	624	550	-	1,148 - 1,448	1,000 - 1,300
7.30	28	+35	716	630	+55	1,272 - 1,572	1,100 - 1,400
7.60	-	+35	762	671	-	-	-
8.20	32	+40	792	695	+60	1,194 - 1,544	1,000 - 1,350
9.50	38	+45	957	845	+70	1,324 - 1,724	1,100 - 1,500
10.20	40	+50	1,000	880	+80	1,740 - 2,340	1,500 - 2,100

Top-Cutter		
Working Width, m	Number of Sections	Weight, kg
5.40	3	803
6.30	3	896
6.30 HD	3	896
7.30	3	985
8.20	3	1,060
9.50	5	1,340
10.20	5	1,438



Tel.: +45 97 72 42 88  
E-mail: info@he-va.com

Web: www.he-va.com

N.A. Christensensvej 34  
DK-7900 Nykøbing Mors

Your HE-VA dealer



HE-VA reserves the right to make design and construction changes without notice



## Tip-Roller

Taking rolls technology to a new level





# A Rolling One Pass Concept

## Don't just roll - Cultivate, level and consolidate

... all in one pass! By switching to HE-VA rolls technology you will reduce your time and costs and improve effectiveness. HE-VA offers a Spring-Board levelling board, turning the roll into an all round cultivator. Coupled with a wide choice of ring types, this means you can specify the right machine to suit any type of land.

Don't just roll it - HE-VA roll it!

### Unique SAT-System

HE-VA SAT-System is designed in such a way that full weight transfer from the middle section to the centre suspended side sections is ensured at any time, without regard to the ring type, ring size and width of the Tip-Roller. Via HE-VA SAT-System the necessary weight from the strong main frame, wheels and folding mechanism is transferred to the side sections.

### Spring Active Transfer-System



All 4.50 and 5.40 m Tip-Rollers and the 6.30 m models with ring sizes under 600 mm are equipped with a weight transfer system, consisting of a folding cylinder and in the opposite end a spring with a telescope.



6.30 m Tip-Roller with 600/620 mm roller rings, and all 7.30 and 8.20 m Tip-Rollers are equipped with two folding cylinders with telescope in each cylinder end and a strong spring between the two cylinders.



All 9.50 and 10.20 m Tip-Rollers are equipped with a double spring to ensure uniform weight distribution across the full width of the rolls.

#### Flexibility - Automatic Weight Balancing

Rolls without HE-VA Automatic weight balancing tend to exert the highest ground pressure on the centre roller section. This roller section carries the weight of the drawbar, wheel frame and hydraulics as well as its own weight, far more than the two wing sections

1 With a basic roller design, there is no weight transfer and the weight distribution is very uneven as can be seen above.

2 Even with a basic sprung weight transfer system the hinges at the end of the centre section roller negate much of the transfer effect.

#### Free Floating Roller Sections

3 HE-VA SAT-System is fully spring loaded and has the outside roll section attached with centre pivot hinges, maximising the weight transfer to give even weight distribution across the full working width of the rolls.



### Unique SAT-System

The Tip-Roller main frame, wheels and drawbar rests on the middle section (O, see photo).

Via the SAT-System, the necessary weight of the middle section is transferred to the side sections (□ see photo).

# Choose Your Ring Profile

### Cambridge rings & Cambridge NG rings

510 mm - 3 spokes & 510, 560 & 620 mm - 8 / 9 / 10 spokes

The Cambridge ring is a universal ring consisting of alternately plain and breaker rings. This ring efficiently consolidates stones and the bended profile is gentle on germinated plants. This combination results in an optimal crushing and packing effect and the great mobility of the breaker ring makes it highly self cleaning.



### Cam rings

550 mm

The Cam ring is most efficient in very light soil types like loose and sandy mould due to the fact that it divides the soil into fine particles and packs it, leaving a porous surface with little clods, which help prevent soil drifting.



### Crosskill rings

485/530 mm & 550/600 mm

Crosskill rings are often used in light and medium-heavy soil types. The rings crush clods and leave the surface slightly crumbled, which prevents soil drifting. These rings are self cleaning, which only increases the effect of the rings.



### 2D Corrugated rings

500, 550 & 600 mm - 8 / 9 / 10 spokes

2D corrugated rings create a level surface completely free of stones, which is of great importance when seeding particular types of crop. It is often used for consolidating germinated seeds as the rounded design is gentle with the plants.



### Star rings

450/500 mm & 550/600 mm

Often chosen, when the roller, besides doing the normal roller-jobs, is also used for soil packing and seedbed preparation. When used for light soil types, the surface is left slightly packed and uneven, which prevents drifting soil. In sticky soil types, the rings' self cleaning effect is of great importance. The Star ring furthermore has a great draining effect on grass fields as the points make little holes in the field.



### Plain roller

610 mm

The plain roller is mostly used for grassland maintenance. Filling it with water will increase the weight and it becomes a very efficient tool for consolidation.





## HE-VA Tip-Roller



**3 Section - 4.5 m to 10.2 m**

Stone trays are fitted as standard and the rolls are all hydraulically operated from the tractor seat using two double acting services. There is a choice of 13 ring types along with three 'boards' which can be fitted in front of the rolls for the additional cultivation action.

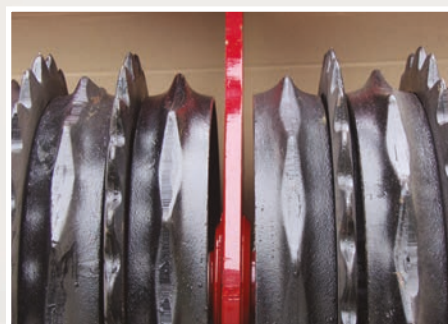


**HE-VA rolls always give FULL width rolling power**

As the HE-VA wing sections are suspended from the central pivot the rolls can follow the most difficult contours. Deep hollows and undulations in the ground will often leave ordinary rollers hanging in mid air, achieving nothing.



Rings are mounted on 60mm axles for strength and long life. These axles run on 4 bolt bearings protected inside u-profile steel.



### Support Bearing

The axle in the side sections of the 8.2 m, 9.5 m and 10.2 m Tip-Rollers has a ball bearing in the centre as an additional support in order to prevent a bending of the axle.



### 3 Section Hinge

The folding mechanism has a deep wing link pivot with Teflon coated steel bushing top and bottom to provide strength for cultivation as well as rolling.



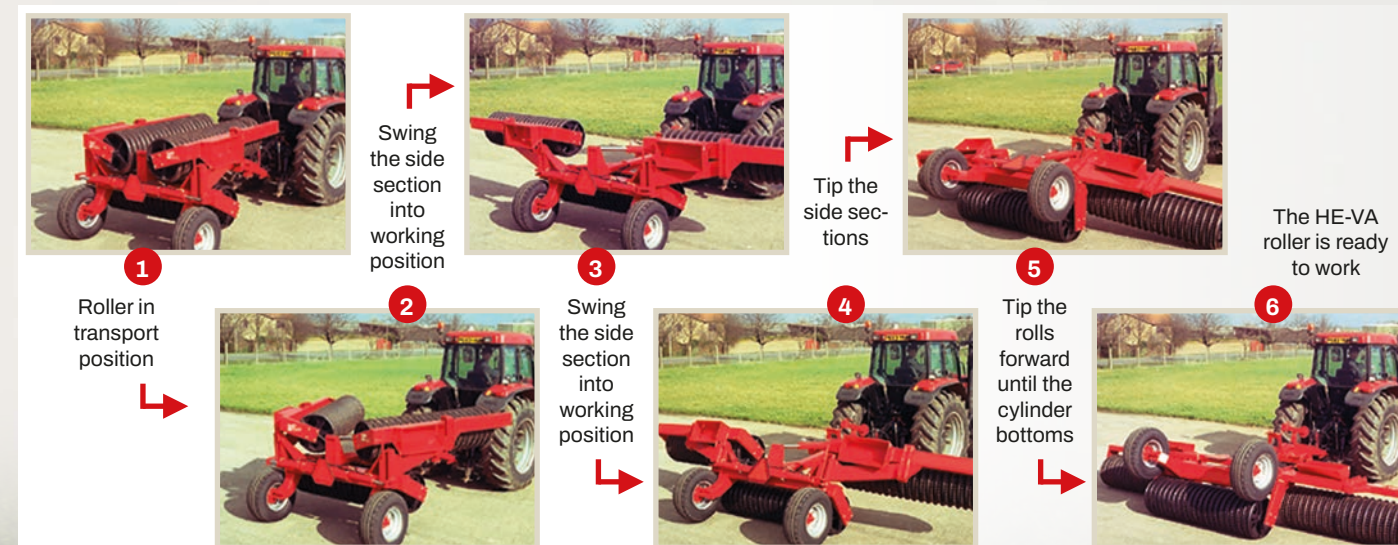
**Real power in action - firming and levelling with clod busting or slicing, cultivating or combinations of both, on top of full width rolling action.**

**With this choice of combinations and working widths from 4.5 m to 10.2 m, HE-VA rolls can meet the demands for improved efficiency regardless of farm size or soil conditions.**

# Fold in Seconds!

Simple, safe folding – what else do you expect from a HE-VA?

## Folding Sequence 3 Section Tip-Roller



## Safe Transport and Storage



Spindle-adjustable supporting leg is standard on 4.50 - 8.20 m Tip-Rollers. Hydraulic supporting leg is standard on 9.50 and 10.20 m Tip-Rollers.



HE-VA 3 section rolls design supports the side section horizontally in a positive locking cradle reducing noise when travelling.



In the completely folded position the weight of the wings is carried between the tractor and transport wheels improving stability.



# Extra Equipment

Hydraulic brakes



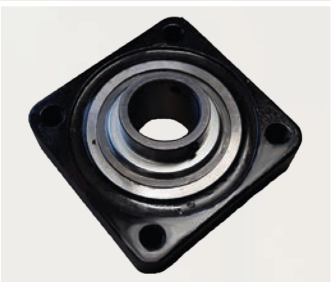
Air brakes



LED lights



Rubber sealed ball bearings



Wheel track eradicator, 3-point mount.

3-point mounted wheel track eradicator for use on ploughed soil, lifts out the tractor wheelings.



Wheel track eradicator, hydraulic

Hydraulic wheel track eradicator for use on ploughed soil, lifts out the tractor wheelings.



Multi-Seeder

Mounting set for Multi-Seeder to be fitted for seed-ing oil seed rape, grass seed, slug pellets etc.



# Choose the Right Equipment

...Whether it is a weeder behind the roller by means of the new Tip-Roller Tool Lift or if it is a Top-Cutter in front of the roller...

## Tool Lift

The Tool Lift for Tip-Roller is a three-point mount, enabling the connection of units such as weeder or alike behind the roller. This way, multiple operations are enabled in the same work flow. Max load on suspension is 2,100 kg.



Standard on the Tool Lift:

- Mounting frame
- Hydr. three-point hitch type 21.01
- Single-acting cylinder
- Cat. 2 connection with 825 mm between the coupling points of the lift arms
- Top rod M30 with Ø25 balls and rivets
- Reversed 1 double-acting oil outlet and 12V plug

Available for Tip-Roller 7.30 - 10.20 m and 6.30 m HD.



## Top-Cutter

Top-Cutter effectively cuts stubble and crop residue without destroying the roots, and thereby contributes with a great degree of flexibility to the process of creating a false seed bed after the harvest.



The unique design with a closed structure keeps soil and residue from gathering and sticking to the Top-Cutter, and ensures a continuous high degree of effectivity without unnecessary stops in the field. The six knives ensure an even and stable work flow.

\*Top-Cutter is also available as Top-Cutter Solo which can be mounted in front of the tractor and enables the simultaneous use of the Spring-Board on the roller.

# Extra Equipment

## Choose your Cultivation Action

This is where your cost savings start - work as you roll ... level, firm and crush clods, all in one pass.

*Cultivate? Prepare a seedbed? Or conserve moisture - flexibility is the key.*

Spring-Board is hydr. operated and therefore the aggressiveness can be adjusted from the tractor currently, and the Spring-Board can be quickly and easily retracted for rolling at crops.

Spring-Board, 1-row

The spring mounted Spring-Board crushes clods and has an excellent levelling effect. The angle of the boards can be adjusted hydraulically, from the tractor seat to suit the land conditions on the day. Each spring is 10 mm x 80 mm and gives wide surface coverage with 150 mm wide hardened points.

2-row Spring-Board is only available for 6.30 HD, 7.30, 8.20, 9.50 and 10.20 m models.



Spring-Board, 2-row



Slicing Plates

Spring-Board can be mounted with 'knives' on the spring-loaded blades, increasing the slicing and clod breaking effect on heavier ground. These blades can also be adjusted for angle of attack, hydraulically as with the Spring-Board.



Longfinger Tines

Instead of Spring-Board tines, Ø16 mm longfinger tines can be mounted

Available for both 1- and 2-row Spring-Boards. 2-row Spring-Board is only available for 6.30 HD, 7.30, 8.20, 9.50 and 10.20 m models.



Harrow & Spring-Board tines

2-row Spring-Board can be mounted with 1 row of harrow tines and 1 row of Spring-Board tines.

2-row Spring-Board is only available for 6.30 HD, 7.30, 8.20, 9.50 and 10.20 m models.



2 rows of harrow tines

2-row Spring-Board can be mounted with 2 rows of harrow tines instead of Spring-Board tines.

2-row Spring-Board is only available for 6.30 HD, 7.30, 8.20, 9.50 and 10.20 m models.



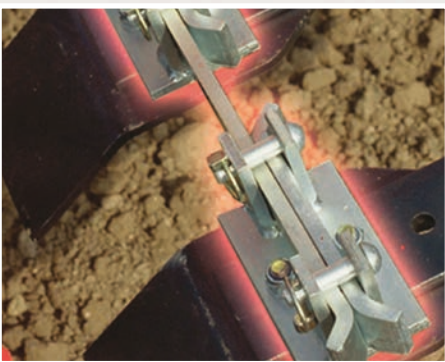
Easy-Change

For Spring-Board we offer "Easy-Change" quick change system of wearing points incl. one set of flat wearing points and one set of slicing plates with 3 tines.



Locking System

The blades can work individually but the levelling effect is increased with addition of the optional locking bars to convert the individual springs into a complete 'board' for full width action.



Edge Equipment

Edge equipment can be mounted on the outer tines, preventing ridges between the individual passes.

